

# Anti-Social Behaviour

## Normanton Problem Profile

### Agenda

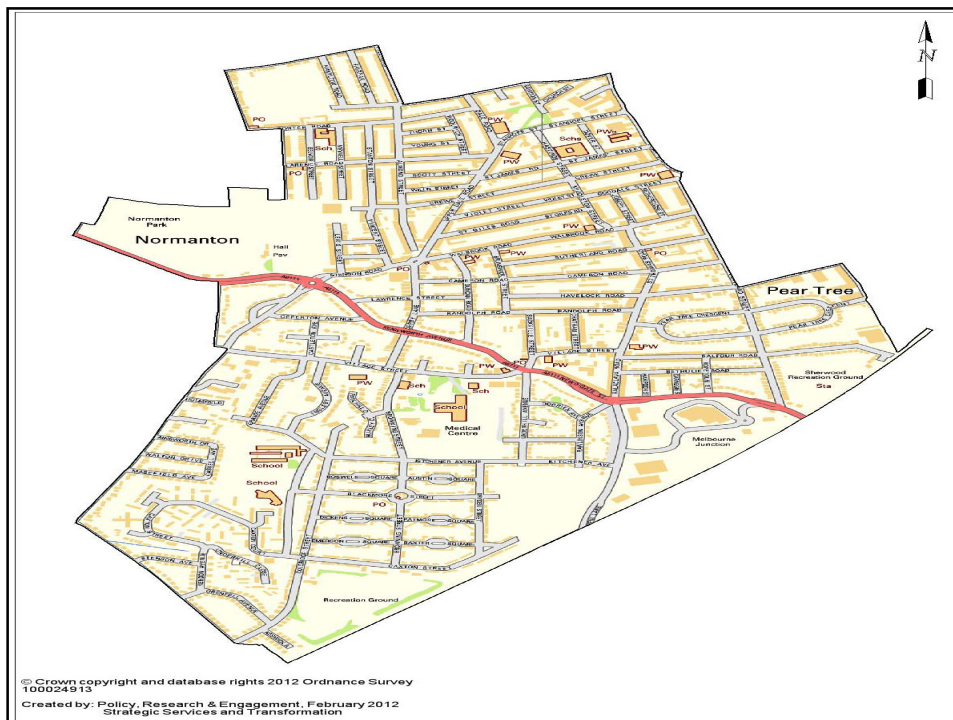
- Overview of Normanton
- Types of ASB
- Perceptions of ASB
- Where does ASB happen?
- Intelligence Gaps and next steps

## Terms of Reference

- Looking at ASB in Normanton Ward
  - TOR cited Normanton and Arboretum but data issues means not currently available
    - Also City Centre will skew results
  - Using available CFS data to get overview of problem
  - Mapped with other ASB data to get full picture

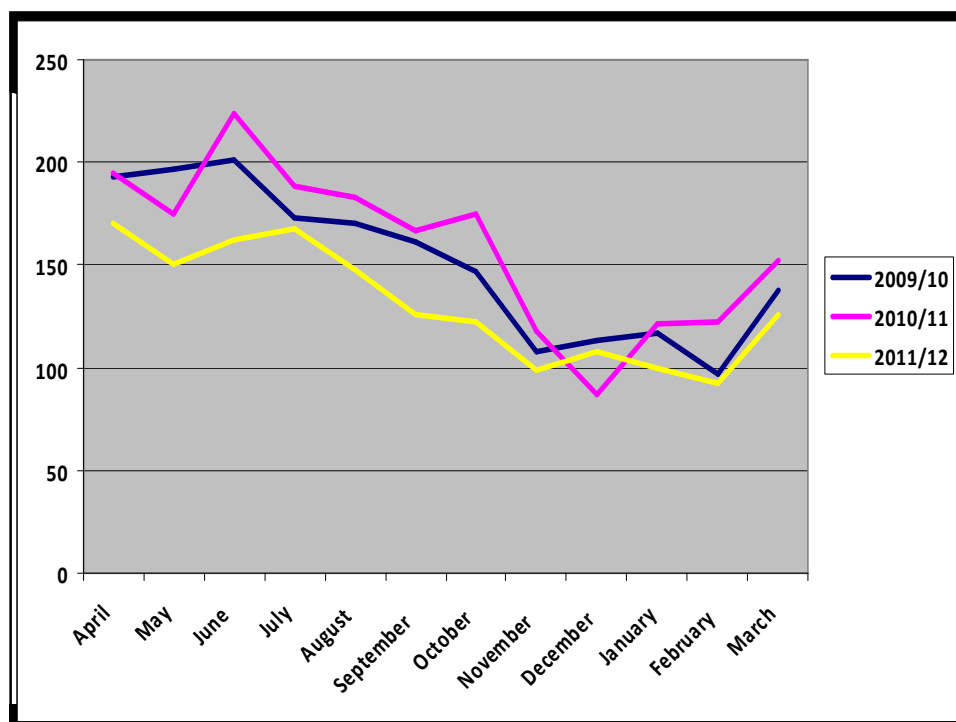
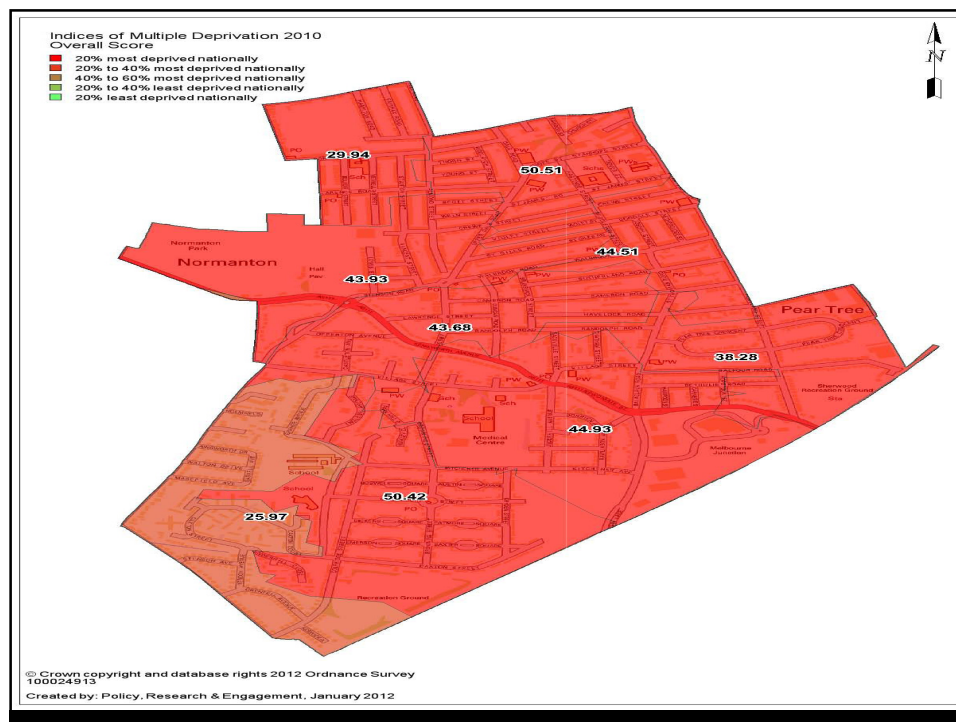
## Data Sources

- Police Calls for Service
  - Details of phone requests for police service
  - Coded as Personal, Nuisance, Environmental
  - Recoded into more explicit categories



## Introducing Normanton

- 6,407 Households
- One of most diverse wards in the city
  - 123 Nationalities represented
  - Estimated 2,760 new migrants in the area (2002-2007)
  - Diverse range of religions represented
- Largely residential area, with large open spaces
  - Main district centre on Normanton Road is predominantly in Arboretum



## ASB in Normanton

- Coded according to information provided by caller
  - Discretionary, just to give a flavour of issues
- 18.5% classed as intimidating behaviour
  - Where the behaviour of one individual or group of individuals was impacting on the feeling of well being of another individual but not making specific threats
  - Anything where a specific crime or incident couldn't be identified, but the caller described feeling of concern, intimidation or disquiet

## Intimidating behaviour

"I am in the house with my babies. There is a young boy outside banging on my door saying open the door. I don't know who he is"

"There are a group of youths in the street opposite my house. They are looking at my house. I have had damage done to my property before"

"People are harassing me – there are kids in the gardens throwing bins"

There are two males walking past my flat – putting fingers up and throwing stones at my window. I do not know who they are.

## ASB Normanton

- Second most prevalent type of call classed as 'young person nuisance'
  - Anything where young people cited as the main complaint – usually 'hanging around'
  - Does not include young people playing football which made its own category
  - 13.6% calls are about young people
  - A further 2.6% of calls are specifically about young people playing football

## Young Person Nuisance

**"There is a group of kids – about 100 of them – playing chicken at the bottom of Portland Street"**

**" There are a group of youths hanging around...about six of them"**

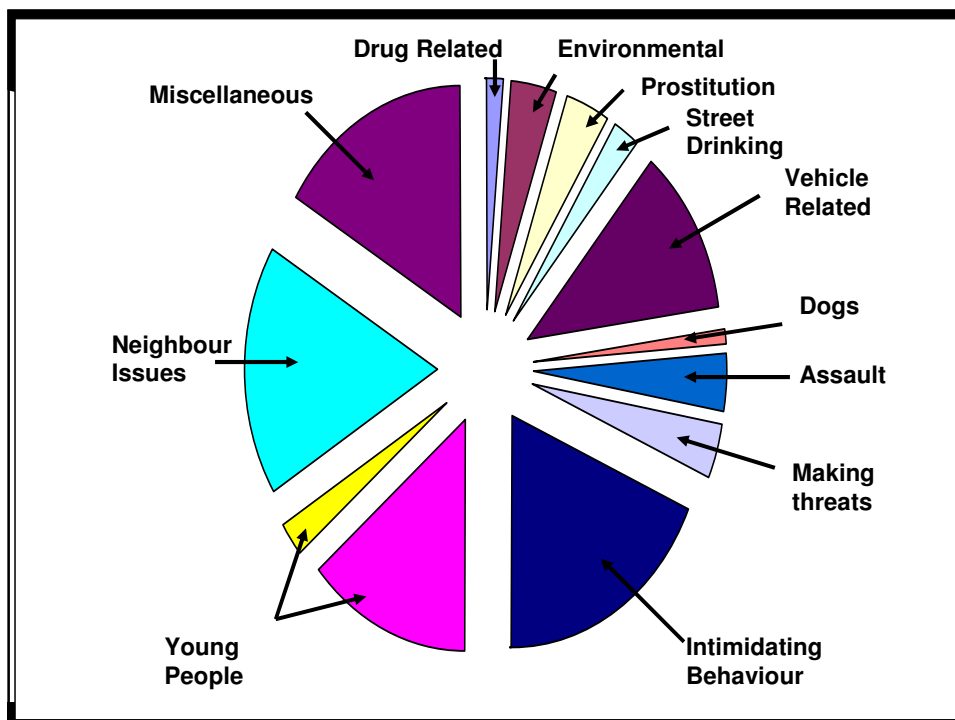
**"Kids are throwing snowballs and building big ones in the road"**

**"There are some youths hanging around outside my shop being generally disruptive and making a nuisance of themselves"**

**"There are some young girls causing a nuisance on the corner of our street. They are messing around on the street and the road."**

## ASB Normanton

- Next two largest categories relate to issues with neighbours
  - 9.6% relate to neighbour nuisance
  - Anything where a caller describes an issue with a neighbour particularly
  - 7.8% relate to noisy neighbours
  - Parties, loud noises, unsociable noise



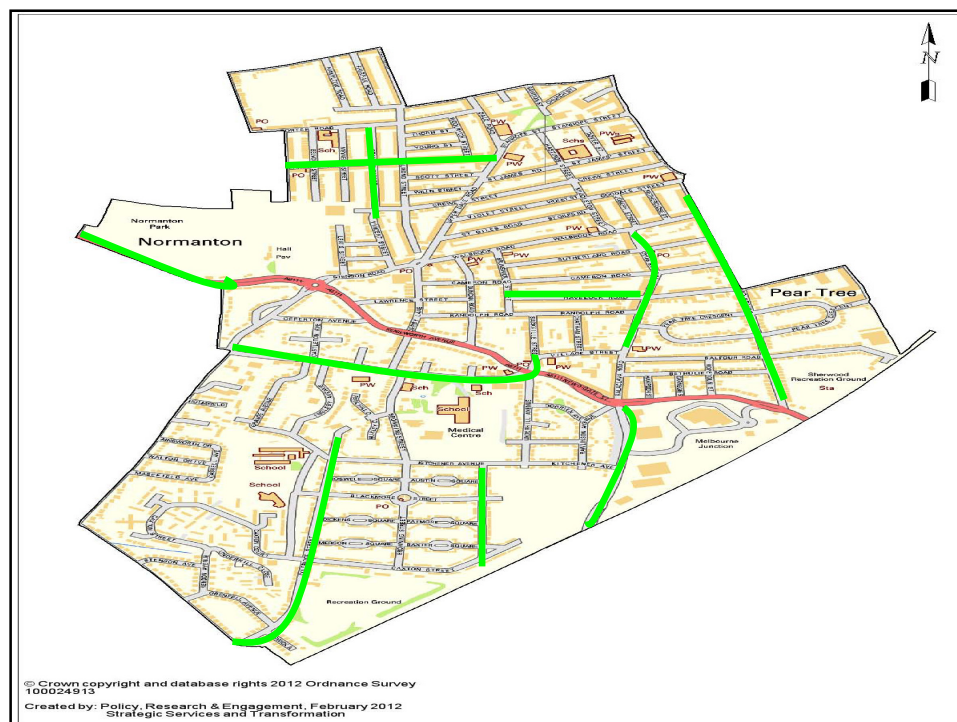
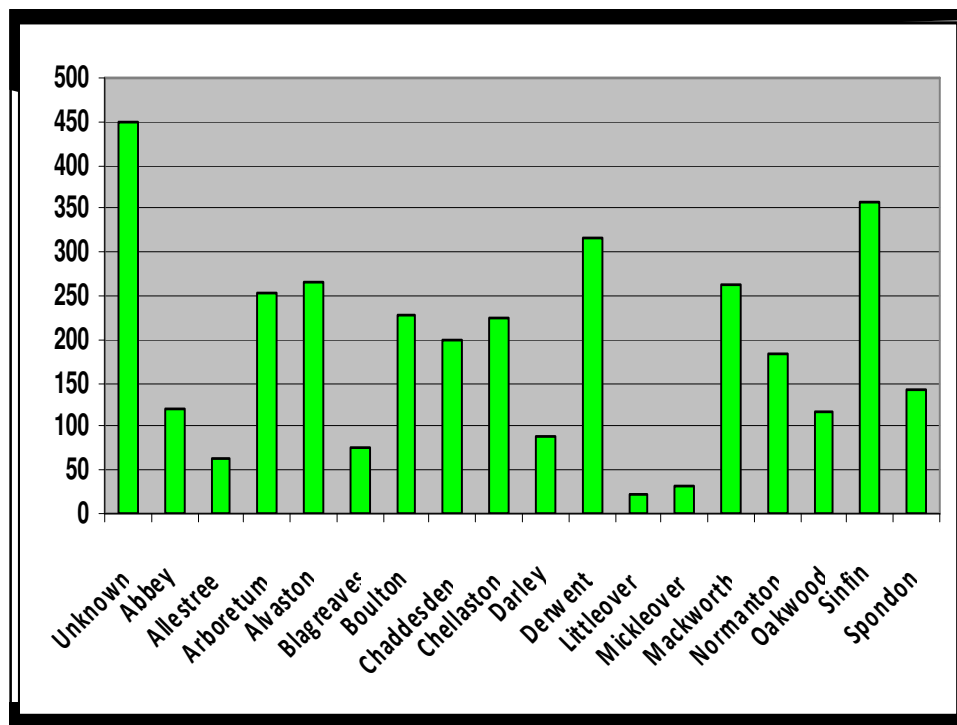
## What does this tell us?

- Main causes of ASB complaints are about people
  - Perceived intimidation/harassment/threats
  - Also neighbour disputes and noise complaints
- Gaps in information
  - Complainer and complainee information
    - Age, gender, ethnicity
    - Reasons why – also missing from perceptions surveys

## One Derby Survey

- Environmental ASB highlighted in Normanton, more than city average
  - Also true of other wards with close proximity to city centre
- Drug Use and alcohol use also cited as problems in the area
  - Drunken and rowdy behaviour, perceptions of drug use all higher than city average
- Not reflected in CFS data
  - Reported other ways?
  - Not reported at all?
  - Gap between perception and reality?





## **Over to you**

- Evidence shows one picture of ASB in Normanton
  - Does this match with what you know, see, hear?
  - What other information do you need to complete the picture?
  - One major intelligence gap is WHY – can you fill this?