

Women's Health Presentation – 5th February 2008

Mike Sandys, Deputy Director of
Public Health
Cal Chikwendu, Senior Public Health
Manager

Health Derby strategy

To recap the presentation on men's health:

- Healthy Derby strategy sets out a challenging, yet realisable, target of reducing by 50% the numbers of deaths below the age of 75 in Derby by 2017
- Current progress would suggest that at we are on course to achieve 65% of this target (1250 of the 2000 lives)

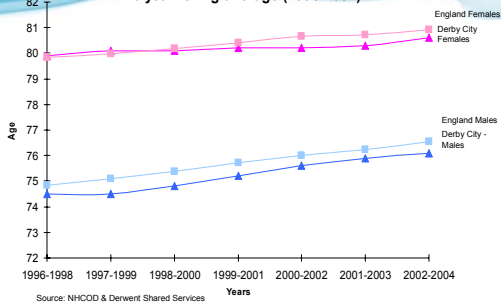
Progress towards strategy for women

- Across a range of measures:
 - life expectancy
 - all cause mortality rates
 - mortality rates from cardiovascular disease
 - mortality rates from cancer

Women's health is better than men's but that progress in the last ten years has been better in men than in women.

Health status in the city

Trend of Life Expectancy at Birth,
3 year rolling average (1996-2004)



Progress towards under 75 mortality target – men and women

Mortality in men and women aged under 75 from all causes of death in Derby City



Progress towards strategy for women

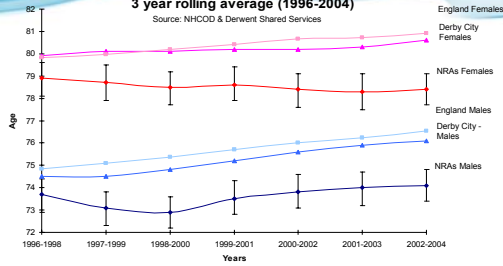
Two areas in particular show limited progress in women:

- Improving life expectancy in neighbourhood renewal areas
- Cancer mortality rates

Health status in neighbourhood renewal areas (incl. priority areas)

Trend of Life Expectancy at Birth, 3 year rolling average (1996-2004)

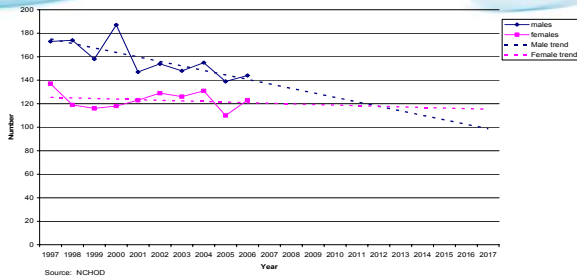
Source: NHCOO & Derwent Shared Services



- Trend across all NRAs for males *remains unchanged*
- *Worsening for females*
- The size of the gap between NRAs and the rest of the city is *increasing*

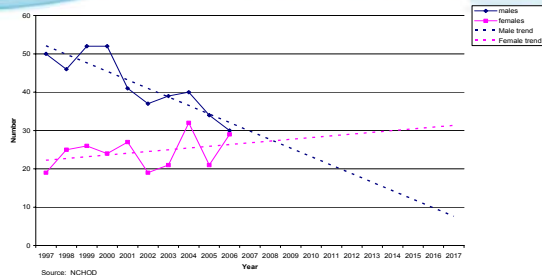
Trajectory for under 75 mortality from all cancers – men and women

Mortality from all cancers in men and women aged under 75 in Derby City



Trajectory for lung cancer – under 75 mortality, men and women

Mortality in men and women aged under 75 from lung cancer in Derby City



Cancer

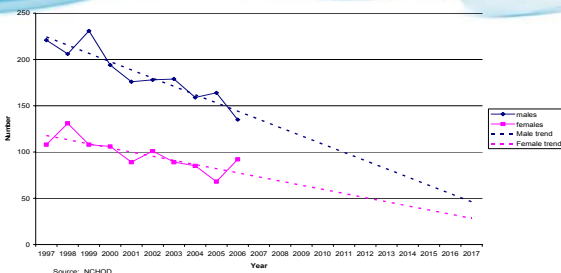
- 36% of all deaths under the age of 75
- Lung cancer leading cause of cancer deaths in women
- Rising numbers of deaths – forecast to overtake men by 2010.
- Not a pattern seen in the East Midlands but similar pattern in Bolsover
- To achieve progress will take a comprehensive programme of work on symptom recognition in the public and professionals

What are we doing on cancer in women

- Cancer screening programmes
 - Cervical – women aged 25-64
 - Good coverage in Derby
 - Liquid based cytology has been introduced – driving down inadequate smear rates
 - Introducing the HPV vaccine for 12-13 year olds.
- Breast – women aged 50-70
- Bowel – men and women aged 60-69 (to be increased to 50-69)

Trajectory for under 75 mortality from circulatory disease – men and women

Mortality in men and women aged under 75 from cardiovascular disease in Derby City



Health improvement

- Community Development and Health workers
- Community Health Educators
- CVD action plan
 - Risk assessment in General Practice and community based
 - Healthy eating
 - B-active

Teenage pregnancy

- Target is to reduce rate of teenage pregnancy by 55% by 2010 with interim target of 15% reduction by 2005 (from a 1998 baseline)
- Derby narrowly missed the 2005 target (14.6% reduction)
- As well as the teenage pregnancy strategy and actions Derby is a national pilot for the Family Nurse Partnership
- Achieving the 55% reduction is a significant challenge
