



DERBY CITY COUNCIL

Children and Young People's Plan 2009/10 Review

Strategic Priorities

The overarching principles, priorities and outcomes, agreed by the City for Children and Young People's partnership continue to provide the framework for delivering the key actions in our Children and Young People's Plan (CYPP).

Our priorities remain:

- Parenting
- Safety, belonging and being valued in the community
- Building ambition, aspiration and achievement
- Physical and emotional wellbeing and safe choices

Performance Tolerance

Colour coded 'tolerance' measures are used across both the council and the partnership to indicate performance against targets and milestones:



Blue Target exceeded by 2% or more

Green Target met / achieved

Amber Performance within 5% of the target

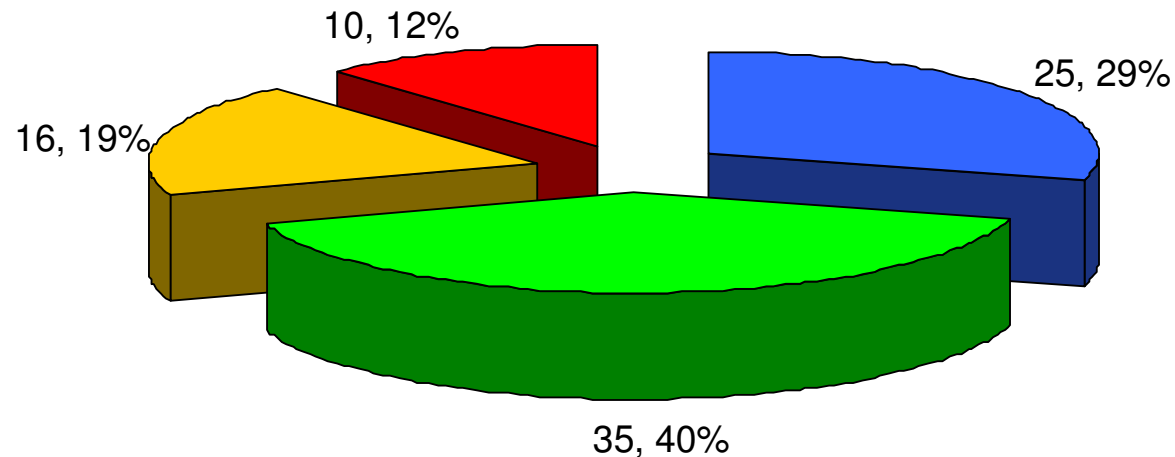
Red Performance adverse of target by more than 5%



DERBY CITY COUNCIL

2009/10 Performance

Visual summary of performance by tolerance measure against the 86 CYPP delivery targets across the 5 Outcome Groups:





DERBY CITY COUNCIL

Areas of Strength (1)

| Be Healthy | Stay Safe | Enjoy and Achieve | Make a Positive Contribution | Achieve Economic Wellbeing |
|--|---|--|---|---|
| <p>Reduced teenage Pregnancies</p> <p>Increased number of women accessing maternity services during early stages of pregnancy</p> <p>Increased number of pupils accessing high quality Physical Education (PE)</p> <p>A new mobile climbing wall facility accessed by over 3,000 children and young people during the year</p> | <p>Increased number of Common Assessment Frameworks (CAFs) completed across the City</p> <p>Reduced number of children with a protection plan for a subsequent time</p> <p>Significantly increased uptake of free entitlement for three year olds</p> | <p>Improved performance at Key Stage 2 (KS2) for Children in Care</p> <p>More young people achieving two or more A*-C graded in Science GCSEs</p> <p>Established two language centres in the city for new arrivals</p> <p>Improved performance across Early Years Foundation Stage</p> | <p>Significantly reduced the number of first time entrants into the youth justice system</p> <p>Increased the proportion of young offenders in suitable education, employment and training</p> <p>Intensive support to parents and families through the Family Intervention Project</p> | <p>Set up 'crash-pad' emergency housing</p> <p>Continued reduction in young people classed as not in employment, education or training (NEET)</p> <p>Almost 100% of care leavers are living in suitable accommodation</p> <p>Increased attendance of lone parents at Options and Choices events</p> |

Areas of Strength (2)

| Be Healthy | Stay Safe | Enjoy and Achieve | Make a Positive Contribution | Achieve Economic Wellbeing |
|---|---|--|---|--|
| <p>Obesity among reception and year 6 pupils lower than national average</p> <p>Increased children's satisfaction with parks and play areas across the City</p> <p>Reduction in waiting times for specialist Child and Adolescent Mental health Services (CAMHS)</p> <p>An early start to Targeted Mental Health in Schools (TaMHS) phase 3</p> | <p>Continued improvements in the stability of placements for Children in Care</p> <p>Improvement in the time taken to complete core assessments</p> <p>Many fewer children with a protection plan lasting two years or longer</p> | <p>Reduced number of secondary pupils who are persistently absent</p> <p>Significantly improved achievement by Children in Care at Key Stage 2</p> | <p>Anti-bullying strategies adopted by over 85% of schools across the City</p> <p>A range of reparation projects established across the priority neighbourhoods of the City</p> | <p>Increased take up by lone parents of New Deal</p> <p>Significantly increased the number of young people achieving independence from supported accommodation</p> |



DERBY CITY COUNCIL

Areas of Challenge

| Be Healthy | Stay Safe | Enjoy and Achieve | Make a Positive Contribution | Achieve Economic Wellbeing |
|---|--|---|---|--|
| Increasing the prevalence of breastfeeding at 6-8 weeks | Improved performance against initial assessment timescales | Narrowing the gap in achievement in the Early Years Foundation Stage and for children with special education needs at KS2 | Reduce substance misuse by young people | Increasing participation of 17 year olds in education or training |
| Improving children and young people's own assessment of their emotional health in terms of positive relationships with family and friends | Deliver an Unannounced Inspection Action Plan | Helping more young people achieve 5+ A*-C GCSEs | Reduce the ratio of Children in Care with final warnings, reprimands or convictions | Increasing the number of care leavers in employment, education or training |
| | | Improving GCSE achievement for Children in Care | Increase young people's participation in positive activities | |
| | | Develop and implement a revised School Improvement Strategy | | |

Next Steps

- The overarching strategic priorities in the CYPP Action Plan informed each of the 5 outcome areas for 2009/10 and will continue to do so during 2010/11. The new Action Plan has been developed as an outcome of the detailed review and analysis of our performance and progress so far.
- The Areas of Challenge summarised will feature in our work for the coming year. In addition to this, the partnership recognises their role and contribution in responding to national developments and initiatives.
- Other activity includes new and emerging areas of focus for the partnership which are a reflection of local changes and aspirations.