

Parenting in Derby

Hazel Lymbery
Head of Performance and Partnerships
Children & Young People's Department
Derby City Council

Parenting Context

- We know that parents are the major influence on a child's life
- Parenting in the home has a far more significant impact on children's achievement than parents' social class or level of education.

Parenting Context

- As part of delivering 'Every Child Matters' with Children Trust Partners, Local Authorities now have a clear strategic role in the development of support to parents in their local area.

Policy Drivers

- The supporting Parent Guidance issued in October 2006 asked, each Local Authority to develop a strategic and joined up approach to the design and delivery of parenting support services in its area.
- Derby's Parenting Strategy demonstrates strong partnership working in achieving the five outcomes:-

- Being Healthy
- Making a positive contribution
- Staying Safe
- Enjoy and Achieve
- Achieve economic well being

To improve support for parent, children and young people in Derby

Parenting Context

- Parents are having children later.
- Fathers are spending more time with their children.
- Teenage mothers are 20% more likely to have no qualifications at age 30 than other mothers.
- Parents of teenagers are increasingly saying they want more help in supporting their children.
- There is a variety in family structure and relationships.
- There are more lone parents.
- Increasing numbers of Young Adults live with their parents.

Taken from:
Every Parent Matters (Department for Education and Skills, 2007)

Methodology re: Parenting Strategy

- The Parenting Strategy has been formulated by a Partnership Steering Group.
- The purpose of the Steering Group is to: monitor, review and identify gaps re: parenting support/activities/programmes through the Parenting Strategy Action Plan.
- "Parenting Event" was held on Saturday 10th March 2007 at David Lloyd
- Launch of strategy on 7.9.07 and 15.9.07

Parents Involvement

- Parents worked in the following groups:-

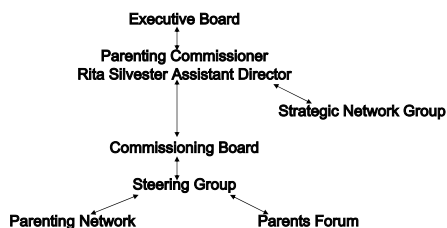
Group 1 - 0 – 5 years old

Group 2 - 6 – 12 years old

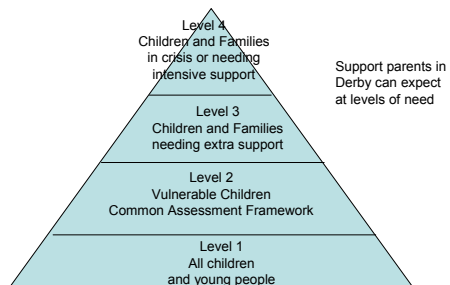
Group 3 - 13 – 16 years old

Group 4 - 17 + years old

Governance Structure



Levels of Need and Service



Challenges

- Increase involvement of local Service users in identifying local needs and developing local provision.
- Promote greater joined up working and service delivery across different service disciplines.
- Support staff to attend training to facilitate Parenting Programmes and in the delivery of Parenting Programmes.
- For the information sharing process to continue to enable effective partnership working across Derby to enable services and outcomes for parents in Derby

Vision

- “We would like to achieve a future in which any parent in Derby who needs support will know where to turn to and be able to benefit from the range of appropriate and accessible services. Seeking help will be seen as a strength, not a weakness and will lead to better outcomes.”

Additional Reading

- Every Parent Matters – www.dfes.gov.uk
- Getting Blokes on Board – <http://www.literacytrust.org.uk/familyreading/blokes.html>
- Is it legal? – A parents guide to the law – www.nfpl.org
