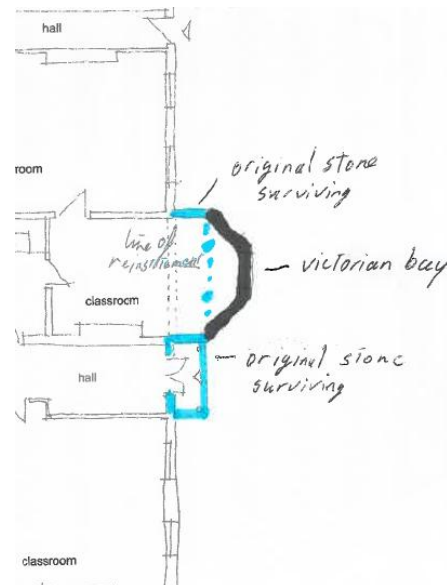


Appendix 2

Historic Examples and references



Top left Camberwell Grove note square porticos/ colonnades to façade of Georgian houses. Top right location near junction of Friar Gate and Brick St opposite Vernon St. Below a portico of the scale although used as doors seen at 47-49 Friar Gate and the façade of Friar Gate House showing the current and proposed situation





Friar Gate House Pre and Post cleaning. Fine stonework can now be appreciated.





Top left Cleaned columns and portico exposing high quality stonework Top right exposed stone column behind bay Below exposed bricks not attached to original Georgian Stonework to rear





Modern Repair to clay element above at junction with stone of original portico and failing below

