

The Re-opening Parker's Piece Cricket Pavilion

The renovation of the cricket pavilion is almost complete, but we still need a storage unit to house the essential grounds maintenance equipment, such as mowers and line markers. Only then can the club take over its use, play cricket and care for the building. After that we can look forward to nodding off with the sound of cricket matches on Parker's Piece in the spring and summer.

Because of the historical importance of Parker's Piece, and its use as a destination for leisure activities, (not to mention as an emergency flood plain) it is important to build a robust quality structure that looks good and helps make an interesting local place. It may also include historical information and local references.

Location – History and References

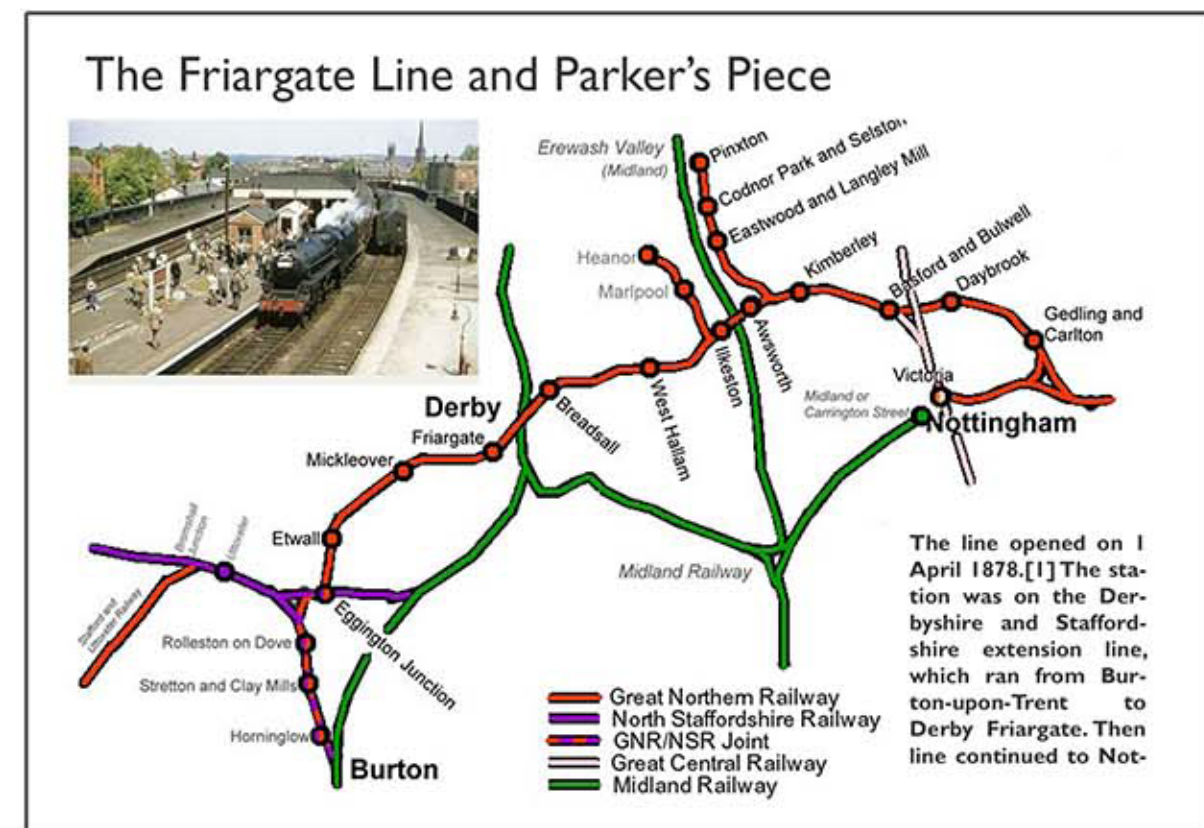
Parker's Piece is known for its Roman history and the Friargate line, Great Northern Railway. As the storage unit is next to the former line we are going to focus on the GNR railway heritage as an inspiration for its design. [In other areas, we may well of course explore roman history as is appropriate].

The Great Northern Railway's steam trains are now gone and so is the track which was finally closed in the mid-sixties. However, these locomotives come to life in the imagination and particularly so, in Parker's Piece where there are so many existing historical clues. The red brick Union Foundry building is angled to fit the line and this points to the bolted classic Handyside railway bridge, Made in Derby by the Handysides foundry. The bridge crosses the river Derwent to the famous Friargate Station Bridge. The shape of the landscape and bolted Corten flood wall is also a subjective, evocative reminder of this history and time. The use of the weathered steel, behind the unit artwork is a deliberate reference to this history.

As we know Derby continues today as a world class manufacturer with innovative designers and engineers including the production of modern train rolling stock, so it is fitting we reference a little of this heritage.

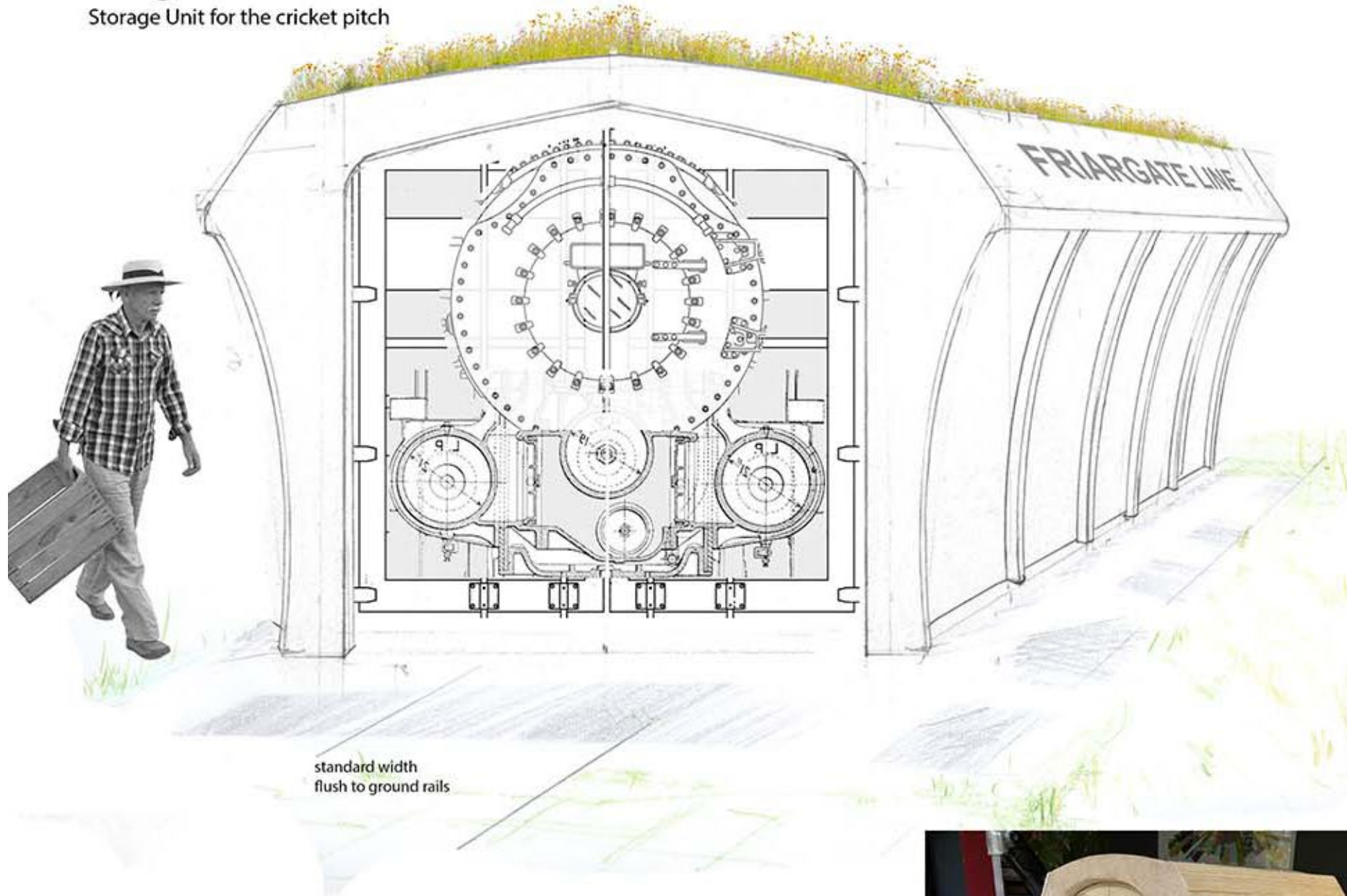


Parker's Piece Cricket Pavilion in the 1920s. The old post card shows the pavilion in the background on a school sports day.



Engine Shed

Storage Unit for the cricket pitch



Engine Shed

The design shape of the storage unit, is derived from railway industrial architecture. The sides are inspired by the curve cast iron panels used to support bridges and tunnels. The main arch will frame the steam train design doors. These will be in the form of a front boiler cross-section, made in metal relief, as shown above.



Model in progress at 1 -10 scale



The cast Iron roof at St Pancras Station London Made in Derby.



Relief Design. (to show general idea only)

Engine Shed

Storage unit for the cricket pitch.



It is proposed to add well designed signage that explains the history of the area. I will aim to celebrate the incredible achievements manufacturing and at the same time look forward to a future that works with the beauty of the surrounding nature.

Paving - The 1m wide of surrounding of paving surrounding the container will be paved with natural stone cobbles plus some long Yorkstone flags spaced the same distance and dimentions as railway sleepers.



Paving



Canopy bracket at Friargate, some of the Inspiration for the storage unit



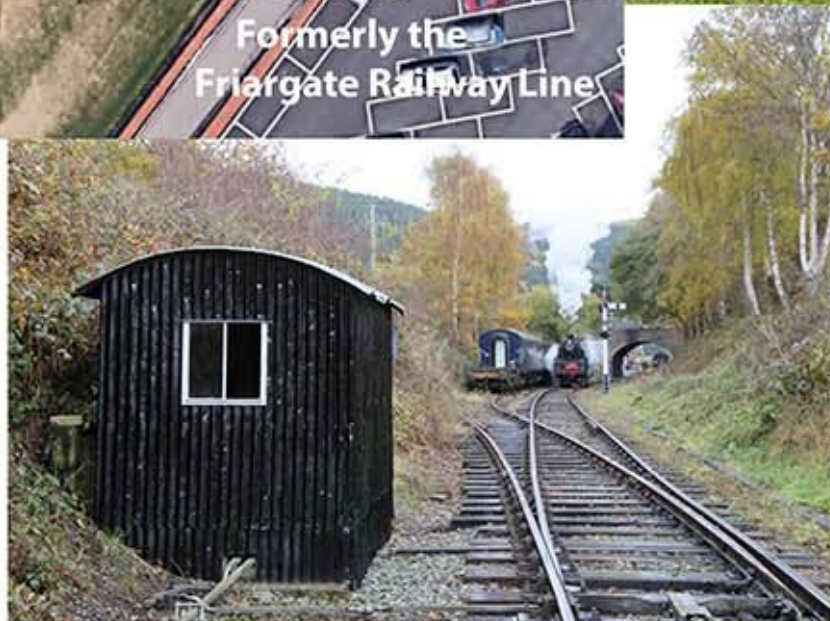
Derbyshire cricket

Parker's Piece Cricket pavilion and storage unit to scale.

The steel flood wall behind follow
the direction of the railway line.

below - plan view

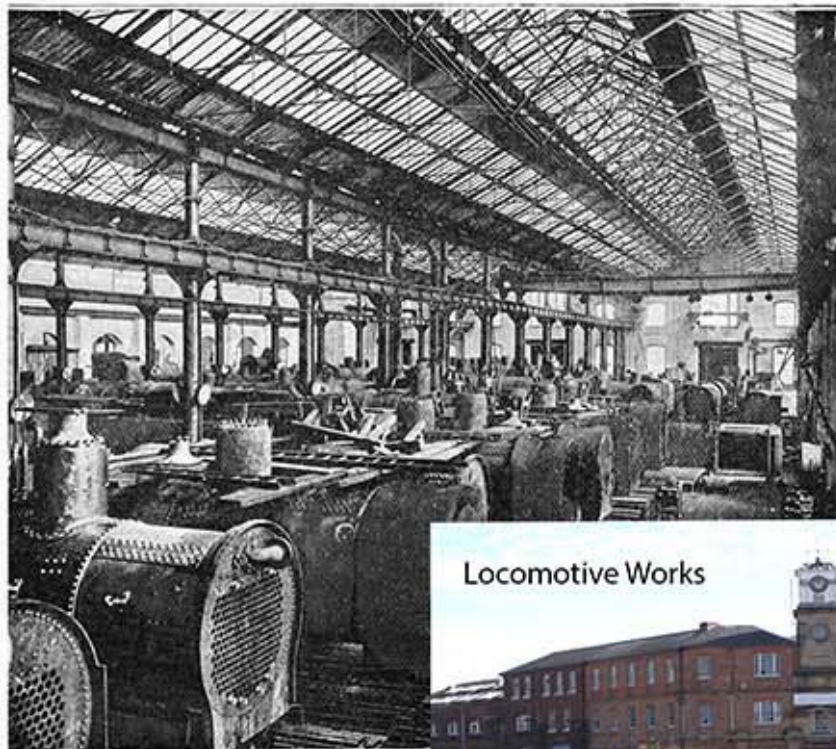
bottom - a track side storage box.



History and Heritage



Handyside Bridge



BOILER S

LOCOMOTIVE WORKS AT DERBY.



Workers social club



Cast iron GNR sign

Locomotive Works



Porteresses at Derby Friargate



1st, 2nd and 3rd class travel, just like airo-
plains today



Friargate the station,)

History and Heritage



Friargate Bridge Made in Derby by the Handyside Foundry. Part of the Friagate line that ran across through Parker's Piece

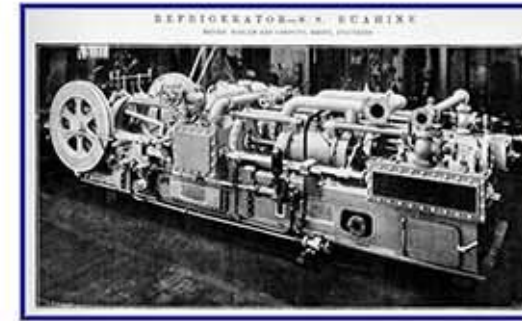


Friargate Passenger and their cat

CHEAP TRIP
TO
ALTON TOWERS
FOR THE GARDENS etc.
SPECIAL EVENT — MOTOR CYCLE RACING
SUNDAY 29th SEPTEMBER 1957

FROM	TIMES OF DEPARTURE	RETURN FARES Second Class	ARRIVAL TIMES ON RETURN
NOTTINGHAM Victoria	9.30	5.6	8.9
BASFORD North	9.38	5.6	7.58
KIMBERLEY	9.48	5.3	7.49
AWSWORTH	9.53	5.3	7.43
ILKESTON North	9.59	5.-	7.38
WEST HALLAM	10.4	4.3	7.30
DERBY Friargate	10.23	4.-	7.13
ETWALL	10.40	3.-	6.57
ALTON TOWERS arrive	pm 11.26	Passengers return same day at	pm 6.15

ATTRACTIONS AT ALTON TOWERS
GARDENS, FOUNTAINS, LAKES, etc.



Haslam marine refrigerating machine of 1882

(above and below)
A refrigerator made in the Union Foundry (right). Used in shipping and revolutionized the export and import of food.



Abandoned Haslam refrigerating machines



Telegraphic Address "ZERO, DERBY." ESTABLISHED 1824. Telephone No. 50. A. B. C. Code used.

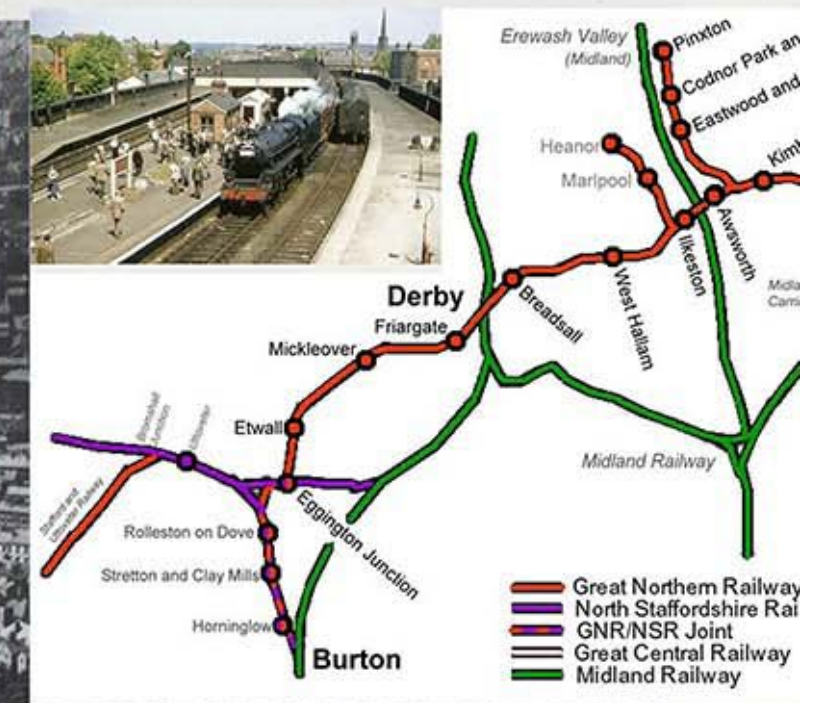
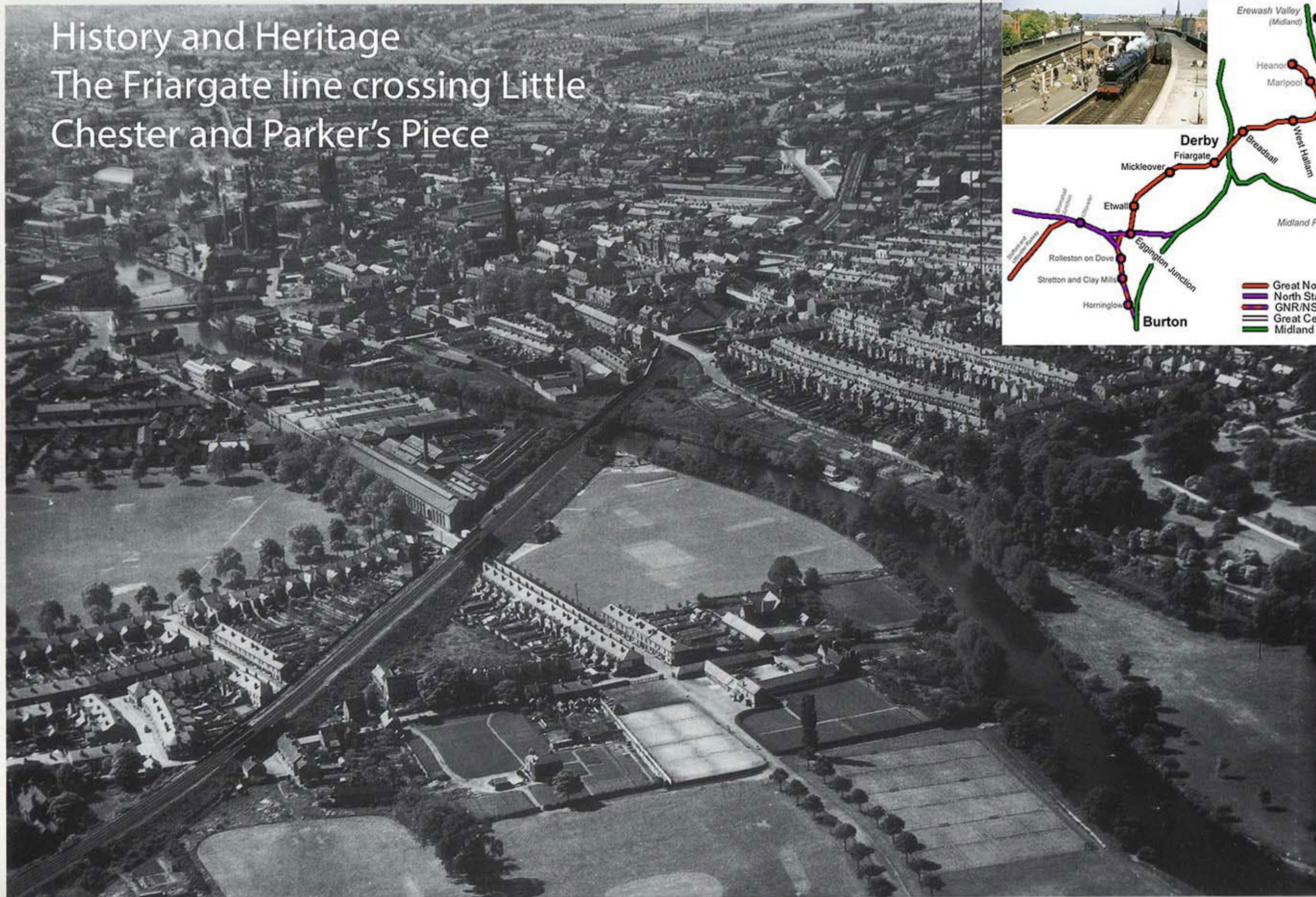
The Haslam Foundry & Engineering Company,
INCORPORATED WITH
PONTIFEX & WOOD, LONDON,
UNION FOUNDRY, DERBY,
AND 34, NEW BRIDGE STREET, LONDON, E.C.

Makers of **HASLAM'S DRY AIR FREEZING MACHINES**, used for the Preservation of Food on board ship and on shore; adopted by the leading Shipowners and Meat Companies in all parts of the world.
Makers of **ICE-MAKING MACHINES AND REFRIGERATING MACHINES** on the Pontifex and De-La-Vergue system.
SUGAR MACHINERY, DISTILLING PLANT, BREWING PLANT, STEAM AND FIRE COPPERS, HYDRAULIC AND SCREW PRESSES of all kinds, **IRON AND BRASS FOUNDERS, COPPERSMITHS, &c., &c.**

Advertisement of 1895

History and Heritage

The Friargate line crossing Little Chester and Parker's Piece

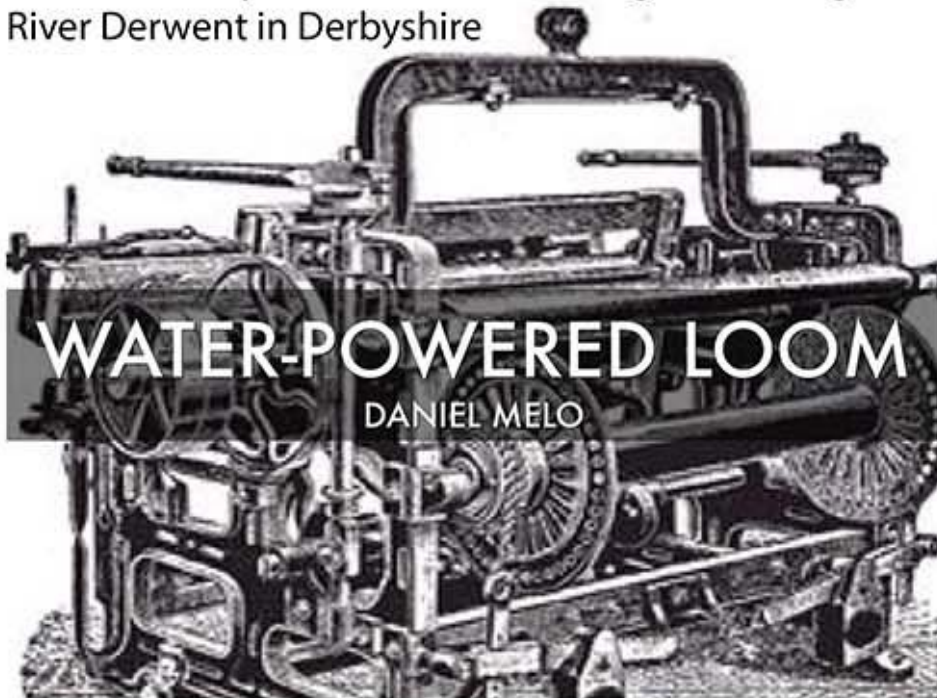


The photo shows the Great Northern Railway crossing Little Chester; Parker's Piece; and the Derwent Bridge to Friargate Station. The Union Foundry and Cricket Pavilion are clearly visible which still exist today.

History and Heritage



Derwent Valley Mills is a World Heritage Site along the River Derwent in Derbyshire



The Derwent River powered looms of the Derbyshire Mills



Watson Hotel, Mumbai Designed by Rowland Ordish from Derbyshire. Prefabricated in Derby by the Phoenix Foundry Company. Other works include St Pancras Stations, dome of Royal Albert Hall, The Albert Bridge over the River Thames



Derby market Hall, Cast Iron roof made in Derby by the Phoenix Foundry

Working with Nature and Heritage Looking forward.



Beware of Trains cast Iron



The Union Foundry, currently empty, facing Chester Green.



Corten at Parker's Piece next to the Friargate line. The track side Union Foundry, just visible over the top.



Railway track with wild flowers reclaiming the unused ground



Trackside



Example of signage and seating in green space

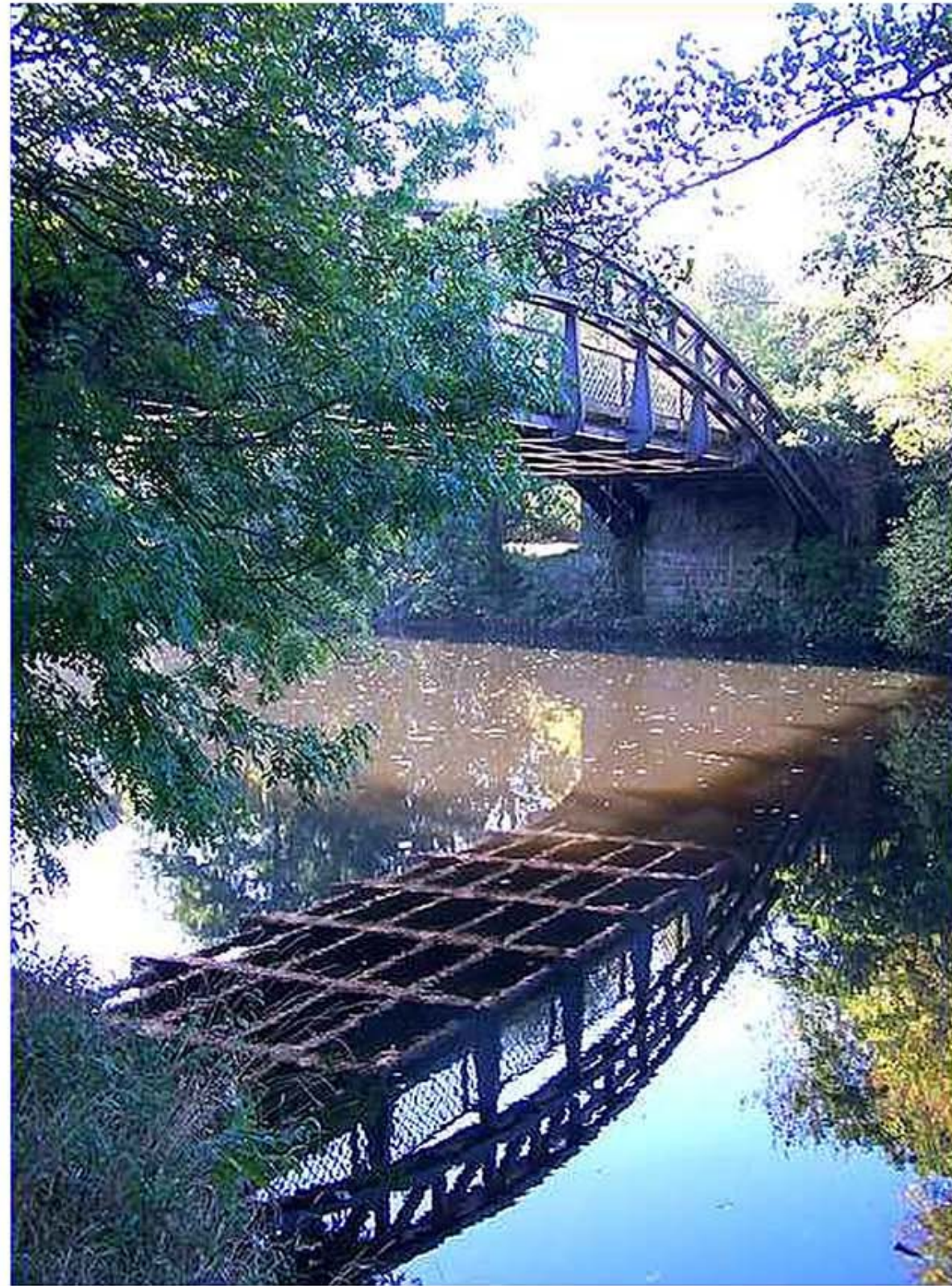


Example of green roof

Working with Nature

Preserving Industrial Heritage

Looking Forward

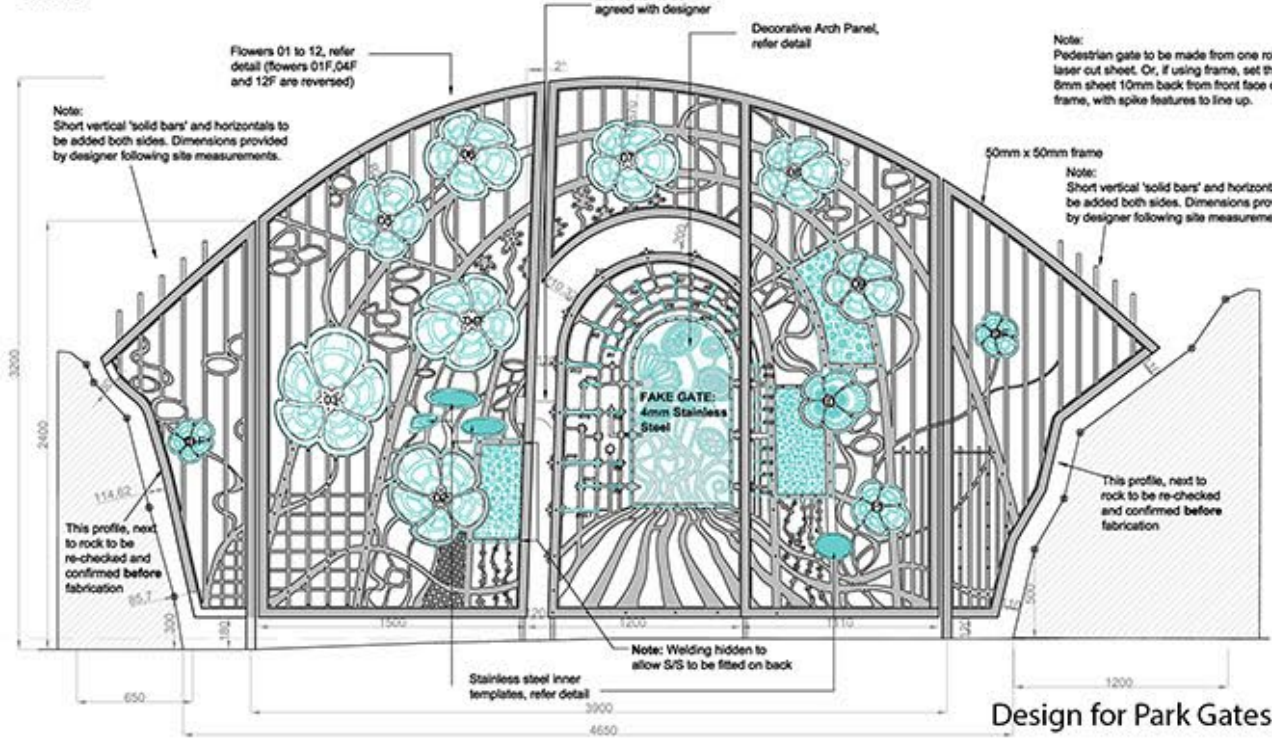


Other Public Works by the Storage Unit Designer



Copings and Steps

BEECH STREET GATE ELEVATION
Scale 1:20



Mosaic Floor Royal College of Art



Stone Gateway with Sculptures



Derby Friargate Cobblestone Heads 1999



Made in Derby Augmenter Reality with cast iron and mosaic plaque.



Park Gates