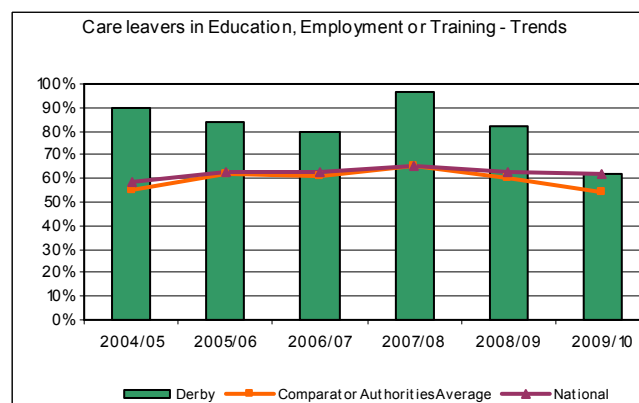


## Care Leavers



Care Leaver outcomes are measured on their 19th birthday where we assess their Education, employment & training status along with the suitability of their accommodation.

Derby has generally been able to show good performance against these measures over the years, however the 2009/10 cohort did result in a significant

## Performance

| Local and National Performance Indicators |  | Derby |      | National |
|---|--|-------|------|----------|
|   |  | 2009  | 2010 | Latest   |
| Local                                     | Rate of children in care per 1000 population                                       | 8.0   | 7.8  | 5.8      |
| NI 58                                     | Emotional and behavioural health of children in care                               | 16    | 15.5 | 14.2     |
| NI 61                                     | Timeliness of adoption placements for children in care                             | 56%   | 60%  | 72%      |
| Local                                     | Percentage of children in care adopted   | 11%   | 12%  | -        |
| NI 62                                     | Stability of placements - number of moves  | 9%    | 8%   | 11%      |
| NI 63                                     | Stability of placements - length of placement                                      | 70%   | 62%  | 68%      |
| NI 66                                     | CIC reviews completed within timescale   | 96%   | 95%  | 91%      |
| Local                                     | Participation of children in reviews   | 95%   | 87%  | -        |
| Local                                     | Percentage of children in care with Personal Education Plans                       | 67%   | 77%  | -        |
| NI 99                                     | Children in Care reaching level 4 in English at KS2                                | 50%   | 69%  | 47%      |
| NI 100                                    | Children in Care reaching level 4 in Maths at KS2                                  | 60%   | 62%  | 45%      |
| NI 101                                    | Children in Care achieving 5 A* to C at KS4 incl. Eng & Maths                      | 8%    | 7%   | 8%       |
| Local                                     | Percentage of young people leaving care with at least 1 GCSE or GNVQ grade A* to G | 68%   | 61%  | -        |
| NI 147                                    | Care leavers in suitable accommodation   | 88%   | 94%  | 90%      |
| NI 148                                    | Care leavers in education, employment or training                                  | 82%   | 62%  | 62%      |

Green denotes better than national average, Red denotes worse.

Derby City Council

## Children in Care Profile

Updated : 17 February 2011

### Headline Information

The number of Children in Derby's care at the beginning of 2011 was **457**. The numbers have risen sharply over the past 9 months and the rates are higher than statistical neighbouring authorities and significantly higher than national averages.

Most children (**70%**) are cared for in foster placements, and of these around three quarters are living with local authority recruited carers.

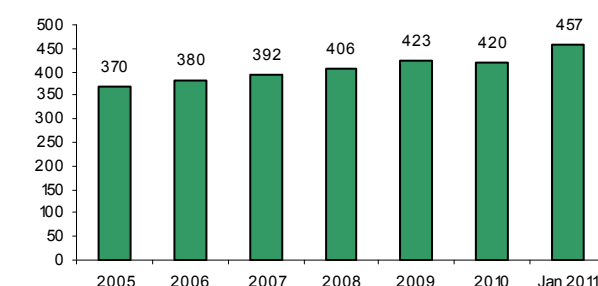
**297** of the children in care live with carers or homes that are situated within the local authority boundary. **160** live outside the boundary with a preponderance around north Staffordshire and west Nottinghamshire. (See map opposite).

Almost a third of our children have been in care for less than a year, but around a similar proportion have been in care for 5 years or longer.

During 2009/10 **42** children in care were adopted which was the highest number for a decade. So far this financial year **22** children have been adopted.



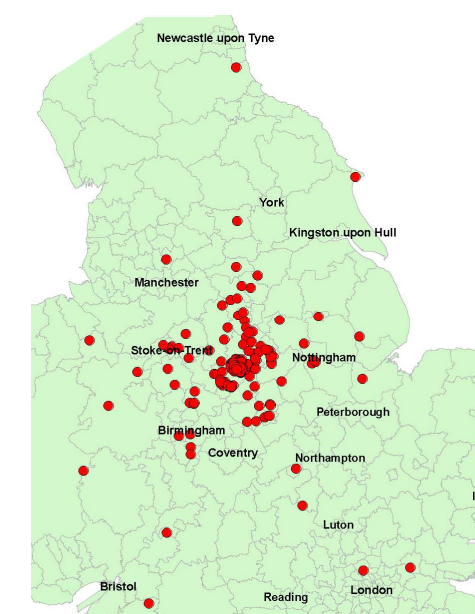
Number of Children in Care at year end



Rates of Children in Care per 10,000 population

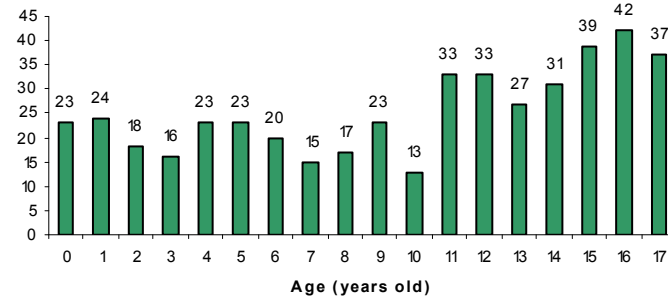


Distribution of Placements across the UK

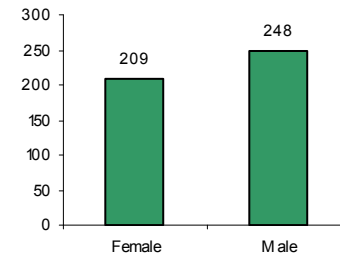


## Profile

Age Profile of children in care  
3 Jan 2011

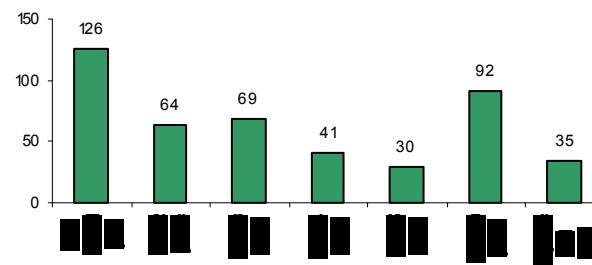


Gender of children in care at 3 Jan 2011



| Ethnicity of children in care at 3 Jan 2011 |     |       |
|---|-----|-------|
| Asian or Asian British                      | 16  | 3.5%  |
| Black or Black British                      | 15  | 3.3%  |
| Dual Heritage                               | 56  | 12.3% |
| Other/Not Declared                          | 8   | 1.8%  |
| White British                               | 350 | 76.6% |
| White Other                                 | 12  | 2.6%  |

Length of time in care at 3 Jan 2011



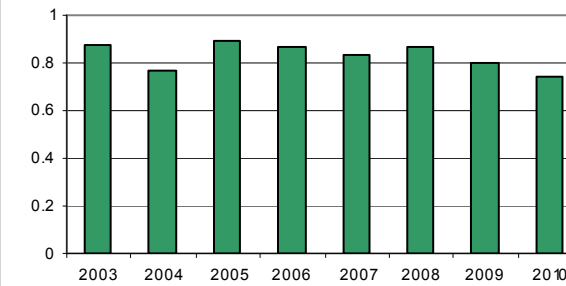
## Placement and Legal Status

| Placements at 3 Jan 2011       |                        |                 |            |
|--------------------------------|------------------------|-----------------|------------|
|                                | Local Authority/ Other | Private/ Agency | Total      |
| Foster Placement               | 235                    | 84              | 319        |
| Homes and Hostels              | 39                     | 14              | 53         |
| Independent Living             | 12                     | 0               | 12         |
| Placed for Adoption            | 41                     | 0               | 41         |
| Placed with Parents            | 24                     | 0               | 24         |
| Residential School or Hospital | 0                      | 3               | 3          |
| Secure Units, YOI or Prison    | 1                      | 4               | 5          |
| <b>Total</b>                   | <b>352</b>             | <b>105</b>      | <b>457</b> |

| Legal Status at 3 Jan 2011                   |     |
|--|-----|
| Interim Care Order                           | 73  |
| Full Care Order                              | 197 |
| Freed for Adoption                           | 8   |
| Placement Order Granted                      | 83  |
| CYPA 1969 Supervision Order with Residence   | 1   |
| Under Police Protection, in LA Accommodation | 1   |
| Section 20 (single period of accommodation)  | 94  |

## Health and Wellbeing outcomes

Percentage of all children looked after for at least one year who had their annual health assessment

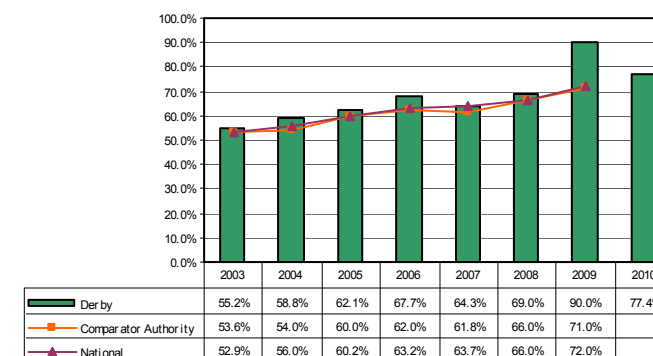


Derby has a smaller proportion of children in care offending than national averages. Last year 17 children aged 10 or over were cautioned or convicted which equates to 8%. The national average was around 9%.

The completion of Health Assessments is also monitored annually and the latest national figures show that Derby completion rates are 9% lower than national averages. Children receiving a dental check during the year is also low with only 67% seeing a dentist during the year.

## Education and Attainment outcomes

Percentage of children achieving 1GCSE or Equiv. Grade A\* to G



### Key Stage 2

Due to the action taken by some schools not to participate in the KS2 tests last year, results for only 13 children were returned. They showed that 69% of children were working to their expected level for English and 62% for Maths.

The Derby average for children who sat the tests last year was 74% for English and Maths.

### GCSE or Equivalent

30 children sat GCSEs last year of which 5 achieved 5 A\* to C. Of these just two achieved the A\* to C grade with Maths and English. This equates to 6.7% which compares to the Derby average of 55%.

### Attendance & Exclusions

The most recent figures show that 11% of children in care missed 25 days or more at school. This is an increase on previous years but below national averages. 3 children were excluded from school during the same period which is a slight increase on previous years.

Percentage of children in care missing at least 25 days from school for any reason

