



# LOCALITY WORKING

January 2021

Communities Scrutiny Board

# BACKGROUND



Derby City Council was asked to respond to the global COVID-19 Pandemic in March 2020 to support vulnerable residents shielding during the early phases of the pandemic in the UK.

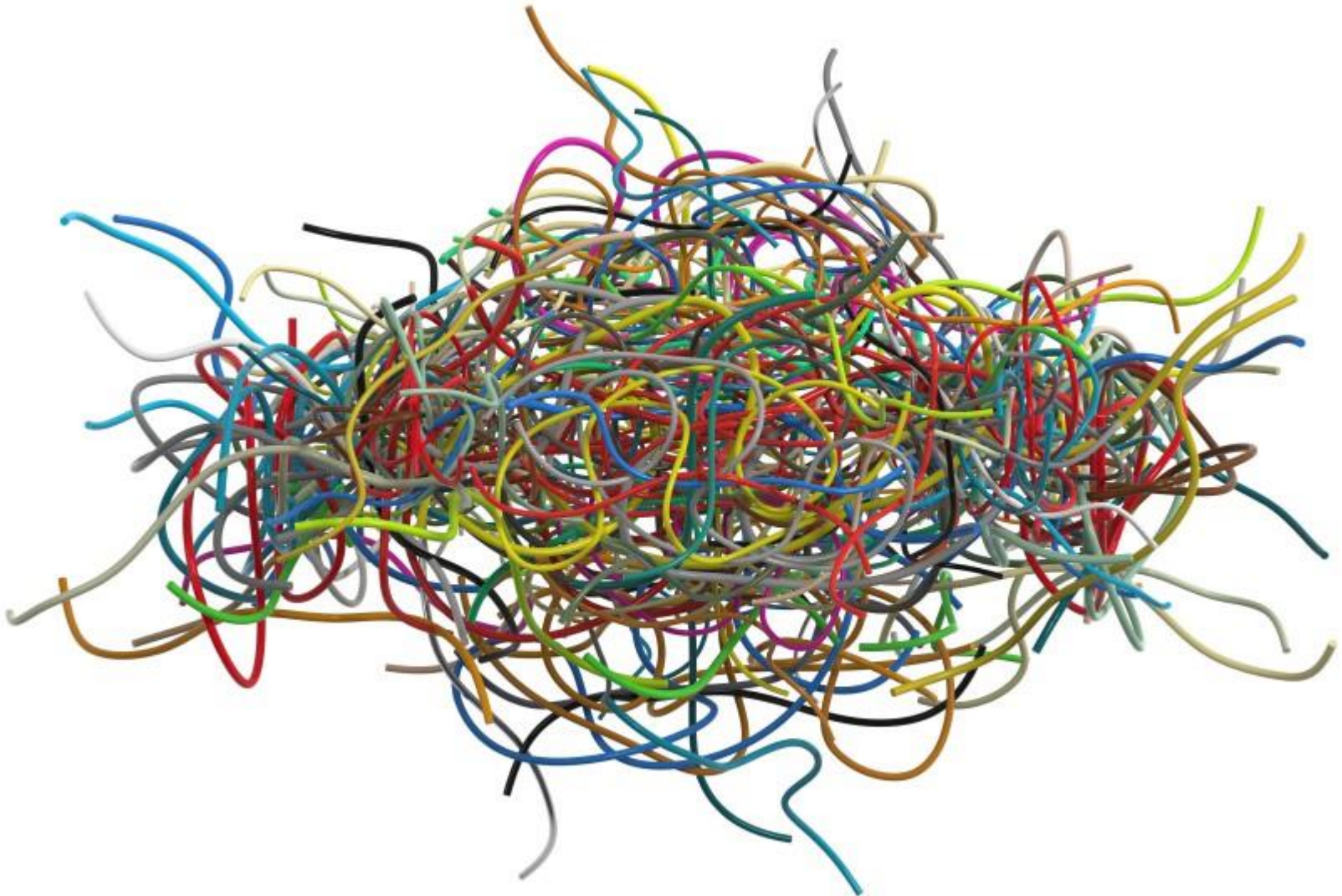


Signposting, support, advice and related activities were successfully delivered by multifaceted teams working hand in hand with local community groups and volunteers through the creation of **Derby's Community Response HUB**.

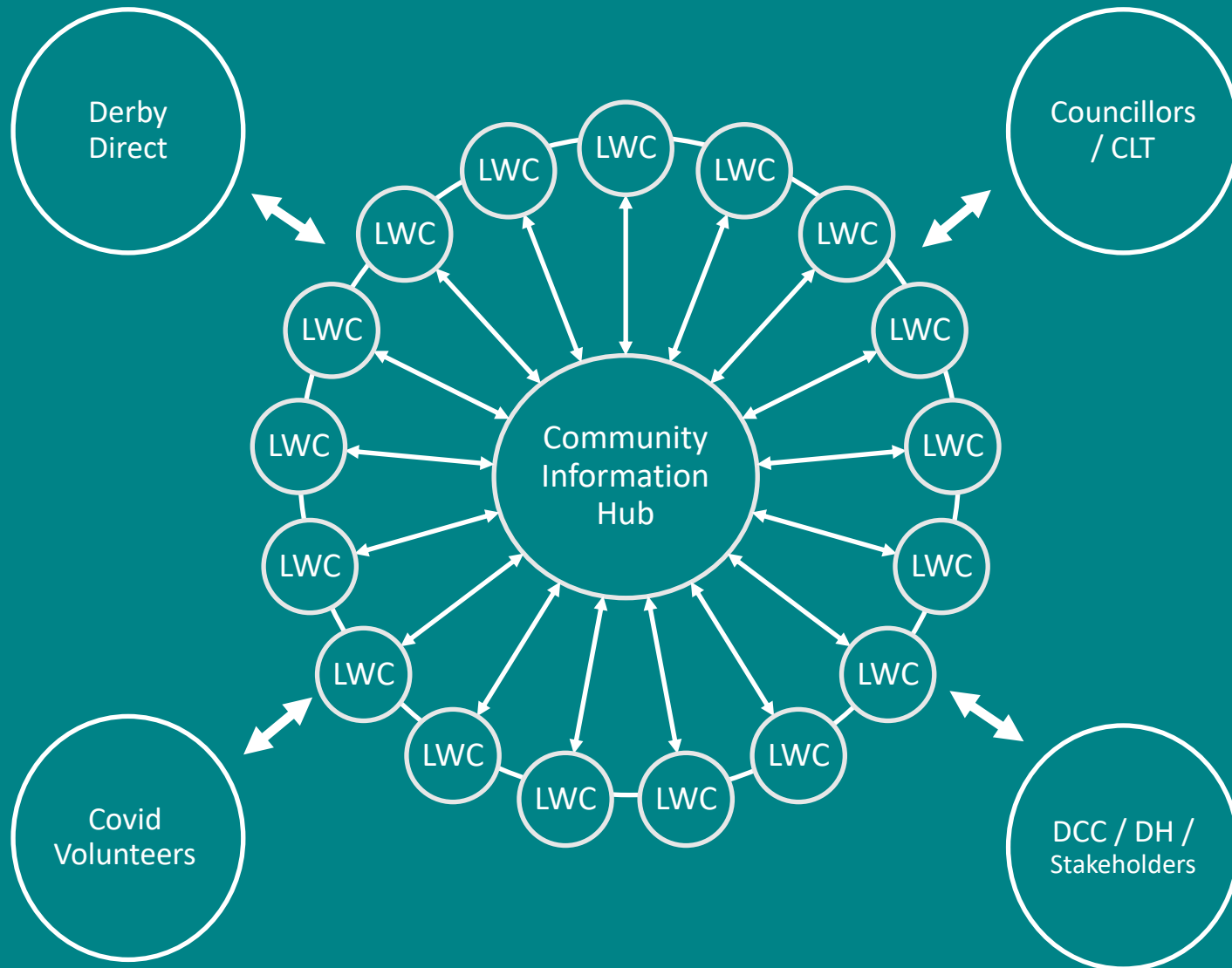
**COVID WAS A SHARED PROBLEM THROUGH WHICH WE  
LEARNT ABOUT THE POWER OF COMMUNITIES & THE  
BENEFITS OF WORKING TOGETHER**



# Public Services – Spaghetti – A customers view?



# COVID Response Model – Better than Spaghetti?



# LOCALITY WORKING – The Case for Change

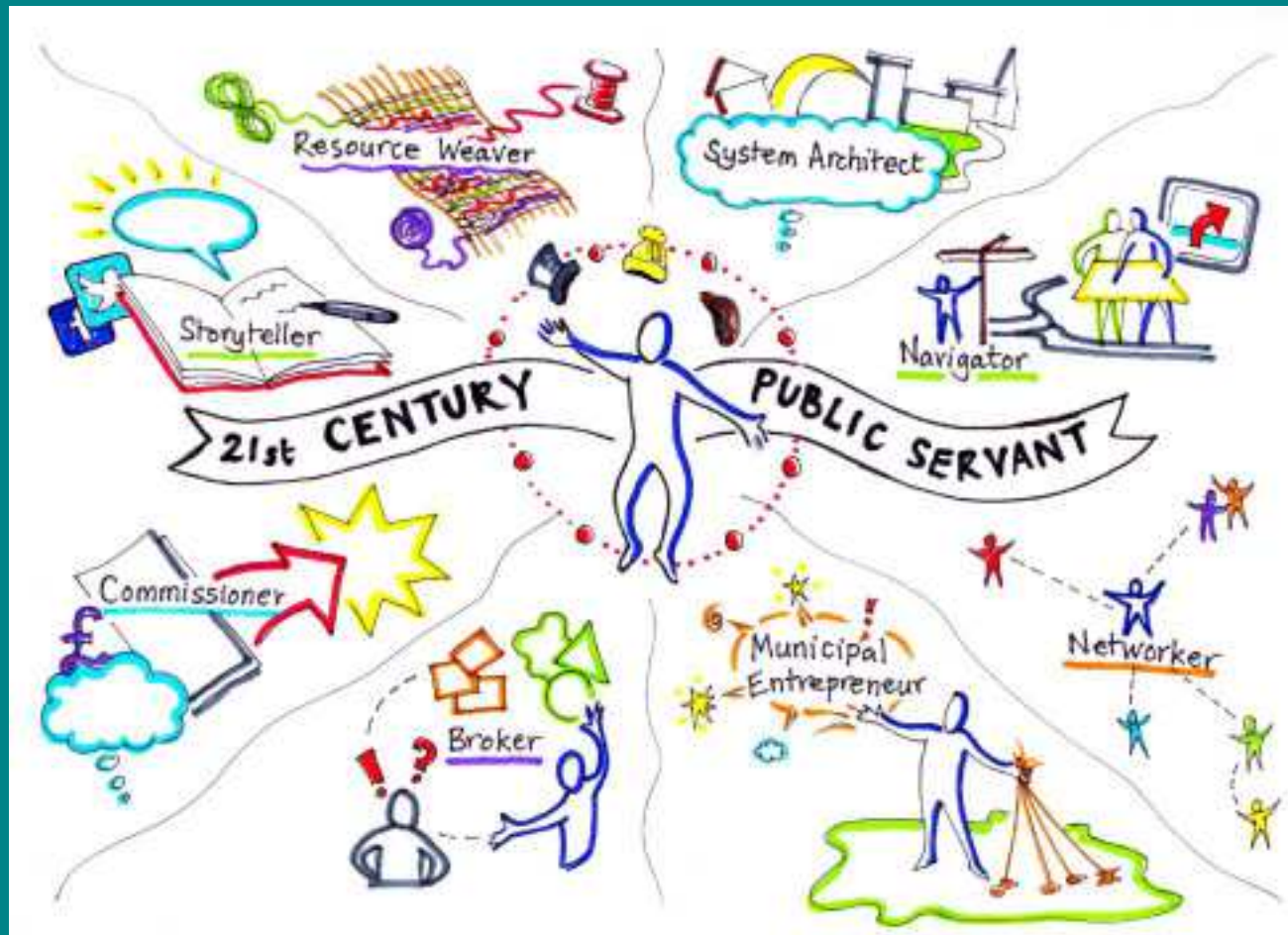


- Community first strength-based – WITH the City
- Locality Based – reflecting difference
- Broken down silos between departments / organisations
- Essential role of elected local councillors
- Simplified access point for citizens
- Understanding the outcome before designing the solution/service
- Real empowerment (colleagues and citizens)





# OUR ROLE – THE NEED FOR CHANGE



# OUR TEAMS – The Case for Change



- End of the paternal relationship
- Stop looking/justifying backwards
- Outcome based – not solution focussed
- Accept we are not necessarily doing the right thing
- Work with our citizens (not for, or against)
- We need an agile workforce
- Empowered to rip up the old rulebook



# #BETTERTOGETHER Wider Context

Derby's Recovery Plan is based on three work streams:



Economic



Organisational

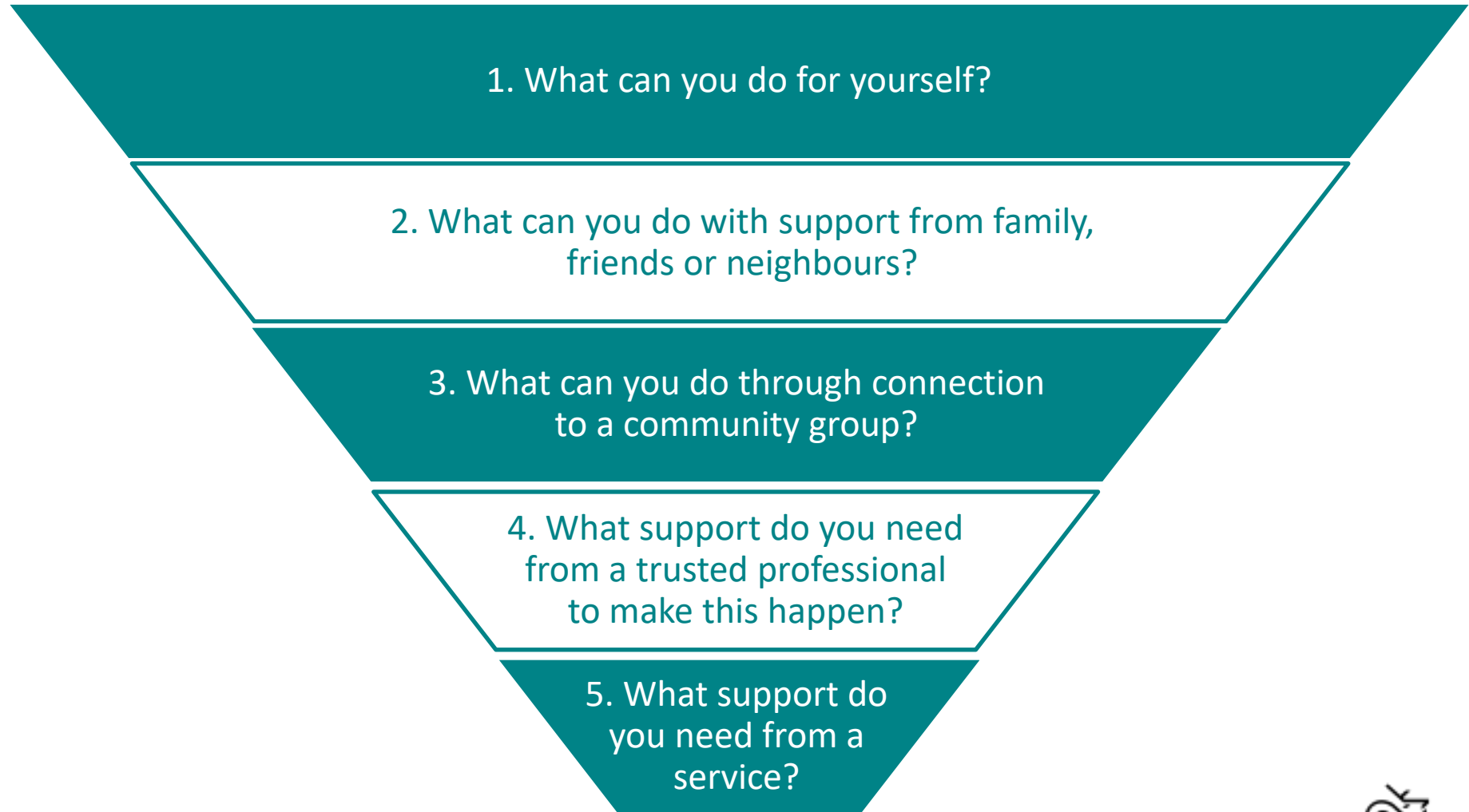


Community  
Recovery

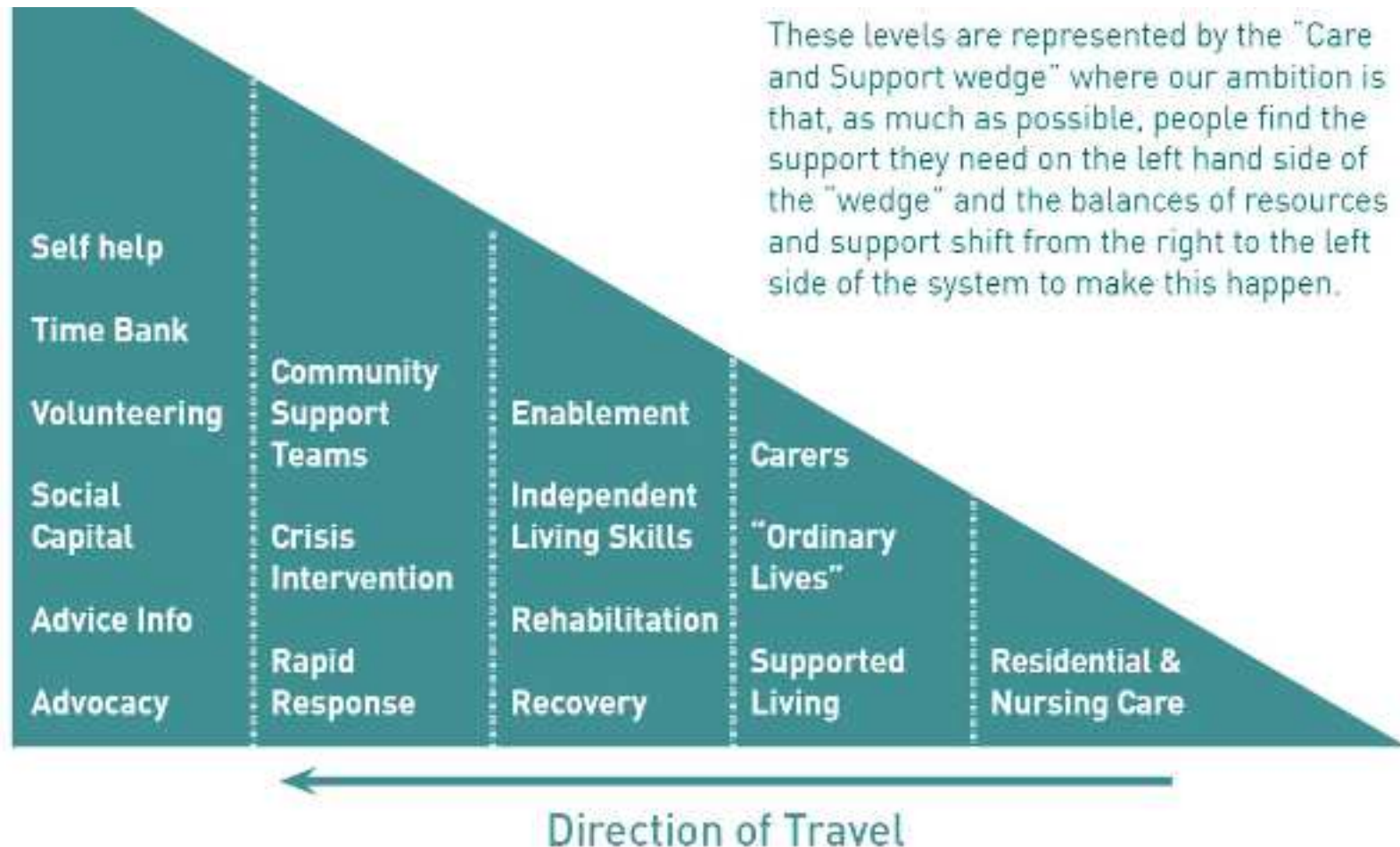
A key strand of the community recovery plan centres on the concept of the **#BETTERTOGETHER** - building stronger communities, facilitating better problem solving and reducing demand for services and social care.



# Hierarchy of Help



# Care and Support Wedge

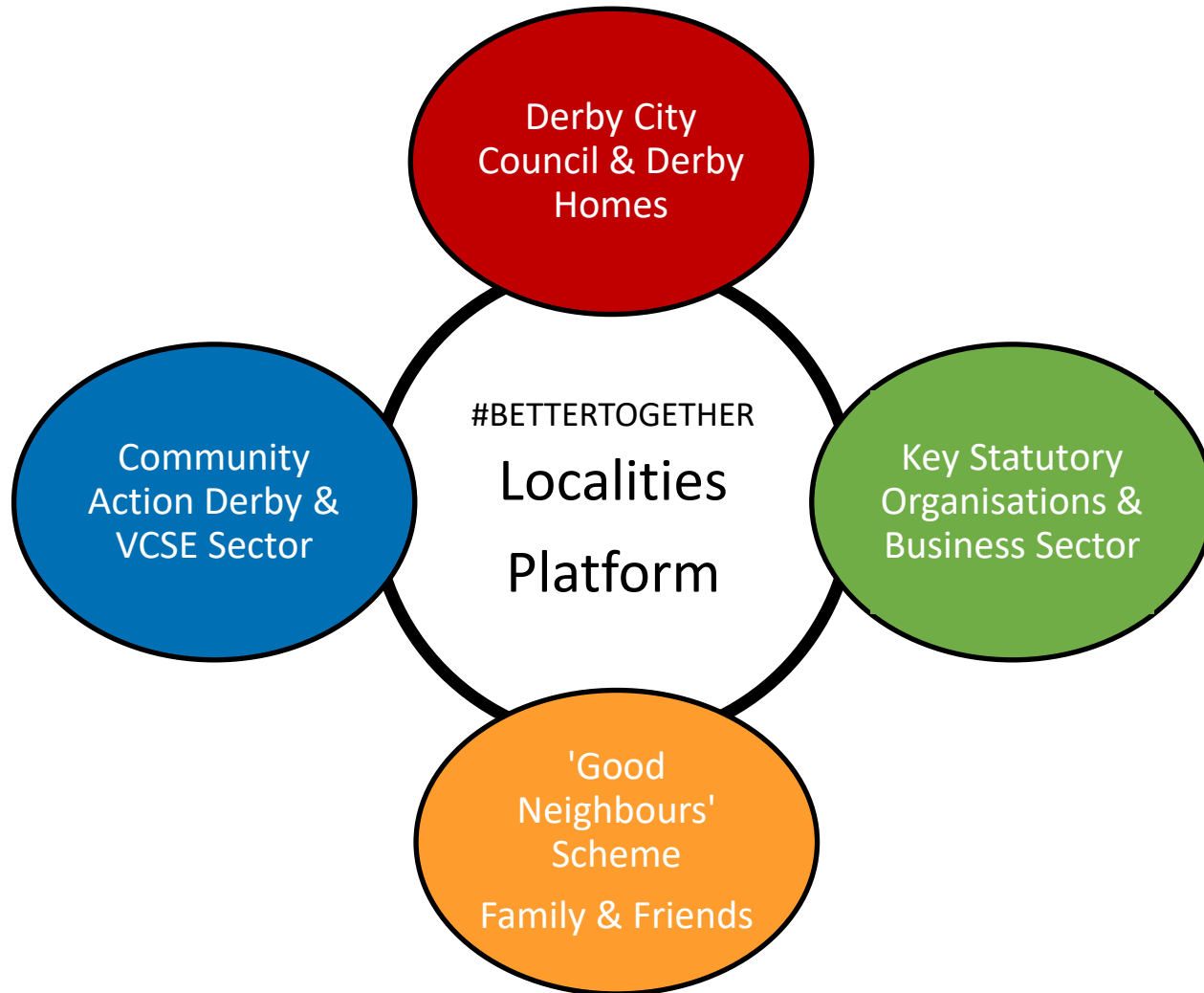


# Locality Model

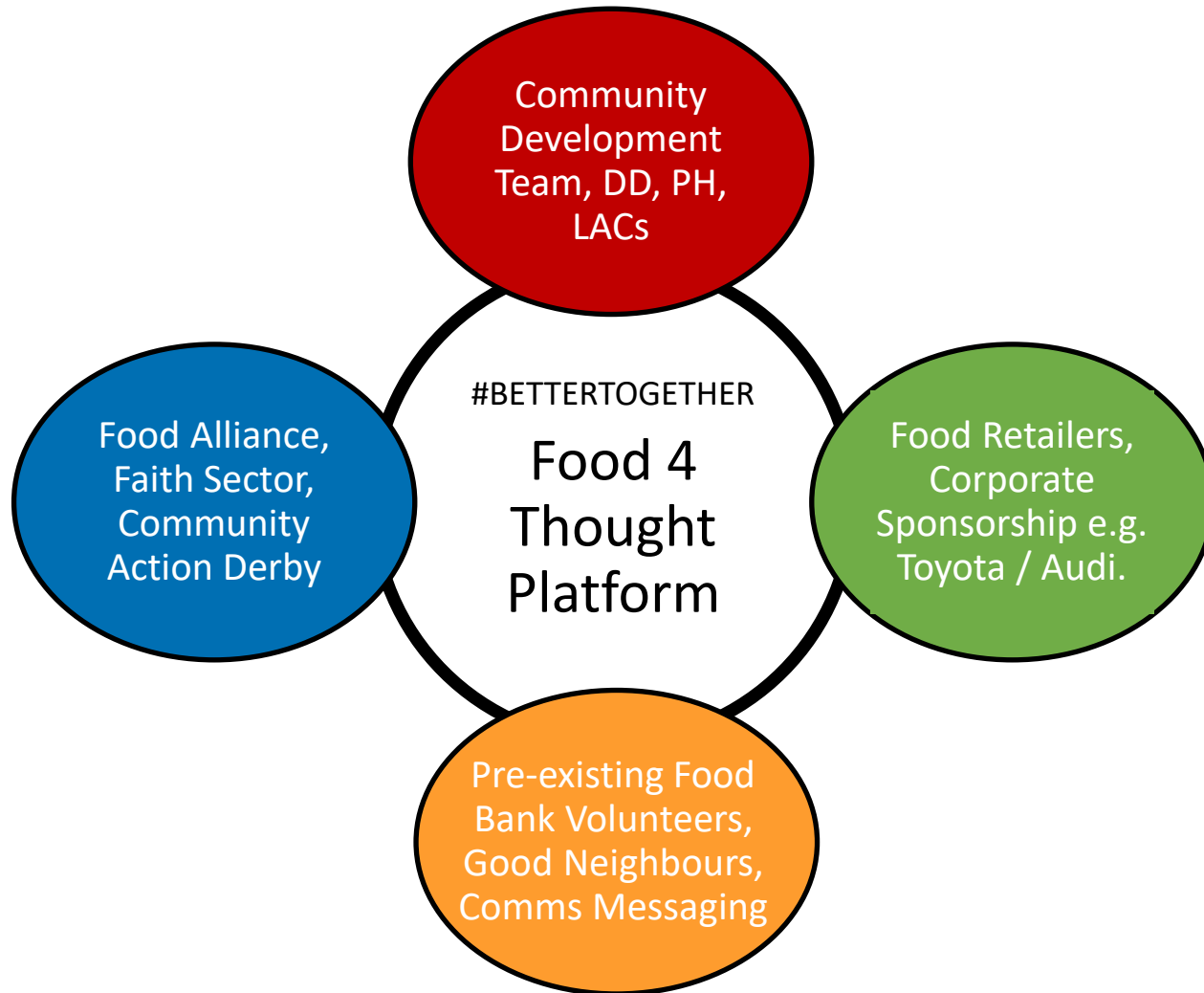
- **Introducing Platforms & Players...**
- The role of the local authority...
- Creating the 'Platform' – 'Pitch Perfect'
- Identifying the 'Players'
  - Our assets... DCC, Councillors, LAC's, DH, Community Development Team, PPO's etc
  - Others assets... VCSE, Businesses, Health, Police, DFRS, etc
  - Community Leaders
- This will involve a fundamental shift in approach, identifying services in neighbourhoods from across the council, and creating an operating model within which 'players' will function together - #TEAMDERBY #TEAM...



# Constructing The Localities Platform



# The Food 4 Thought Platform



# Balancing Response & Recovery

- The pandemic created momentum – motivated us to change
- An effective response will enable a stronger recovery
- We have an opportunity to make real and long lasting changes to how we work
- We need to make bold and brave decisions
- We need to listen to and work with our communities

#BETTER TOGETHER = #PARTNERSHIPS = #STRONGERCOMMUNITIES

#DON'TGOBACKTOSPAGHETTI!

