



Derby City Council

Crime baseline data in Derby
The Safer
Derby Community Safety
Partnership Plan.

Safer Derby Community Safety Partnership Plan

The Crime and Disorder Act 1998 - Community Safety Partnerships (CSP) are local multi-agency partnerships to prevent and reduce crime and disorder.

The Safer Derby Community Safety Partnership Plan 2022-2025 identifies how the CSP plans to tackle community safety-related issues that matter to residents, businesses, and visitors.

The plan is revised annually by reviewing information set out in the community safety strategic intelligence assessment and from information obtained from the annual community consultation which ensures that current issues are considered.

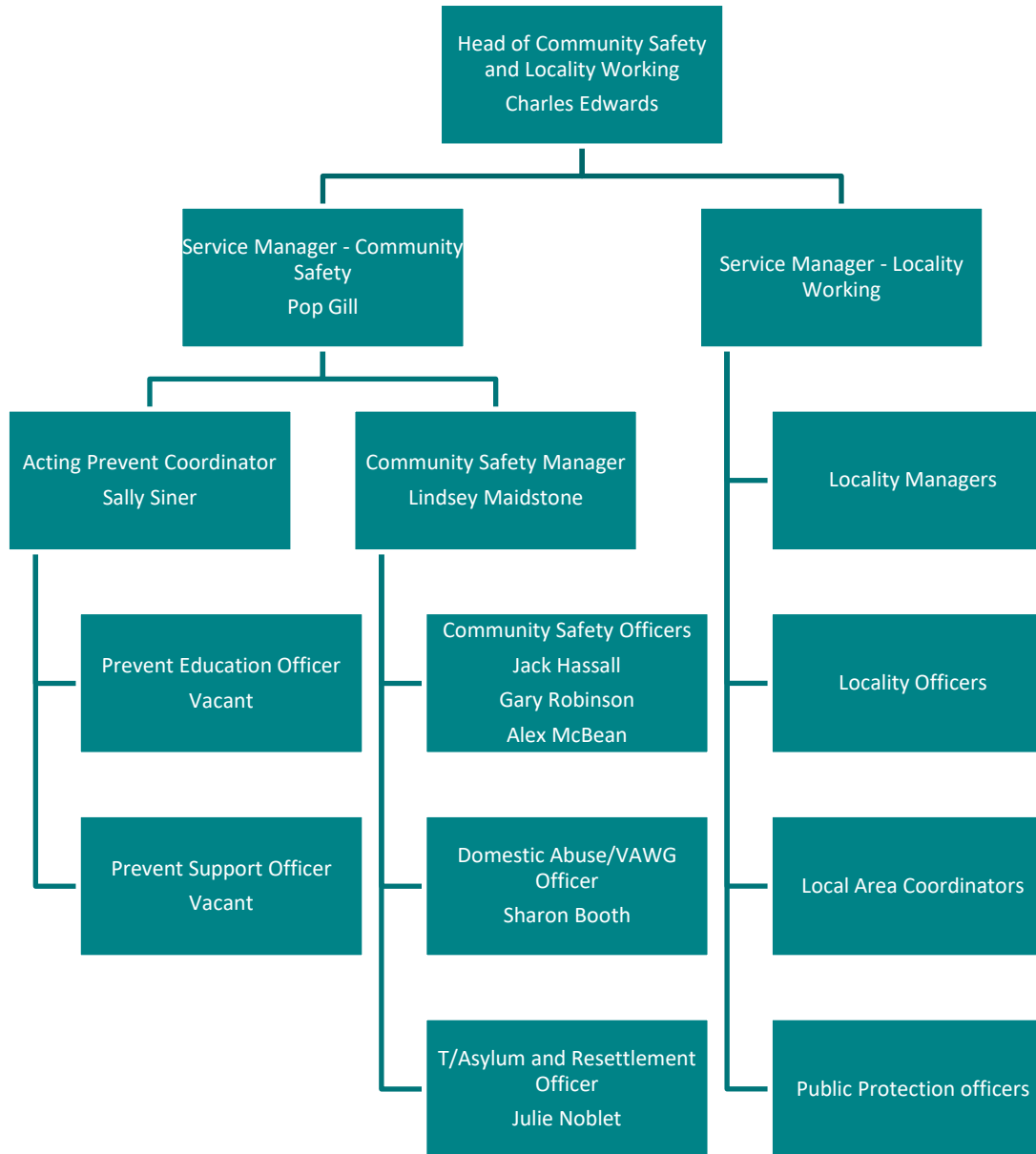
Safer Derby Community Safety Partnership Plan

1. Work in partnership to address local crime and disorder priorities
2. Improve safety in the city for people who live in, work in, and visit Derby
3. Identify key local crime and disorder priorities through assessments and consultation
4. Monitor and evaluate these strategies

The Partnership :

- Derbyshire Police
- Derby City Council
- Derbyshire Office of the Police and Crime Commissioner
- Derbyshire Fire and Rescue
- Derby City Clinical Commissioning Groups
- Derbyshire Probation
- Derby Homes
- Community and Voluntary Sector
- Community Representatives

Community Safety Team



Community Safety 2022 - 2023

CCTV	Management of CCTV Systems Active Monitoring and collection
City Centre and NTE	Purple Flag Status Derbion and city centre youth ASB provision Support for school strike days ASB initiative Taxi Marshal service Street Pastors Service
Offenders	Integrated Offender Management targeting persistent, problematic and high volume offenders
Youth Violence	Targeted and universal schemes to engage young people on Knives, Gangs, Peer Pressure and crime Projects to reduce SYV
ASB	ASB related crime and disorder issues and physical interventions
Modern Slavery	Victim Support and Safe Accommodation Modern Slavery Partnership = Pursue and Protect Training and Awareness
Cohesion	Show Racism the Red Card Community Based Projects Stop Hate UK Third Party Reporting
Sexual Violence	Independent Sexual Violence Advocate Service
Domestic Abuse/VAWG	Male engagement project DHR's - Independent Chair and Review meetings Sanctuary Scheme - Derby Homes Safe Accommodation Service Childrens mentoring Active Bystander Training CET Muslim Women's Active Bystander Int Women's Day Derby Community Talks Int Women's Day Derby Online Toolkit Womens Work Womens Support
Radicalisation/Terrorism	Projects – schools, community, college, 1-2-1 counselling Prevent Tactical Group/Police Led Partnership Channel Martn's Law/Protect Duty Implementation Group
Asylum/Resettlement	Asylum Dispersal Homes for Ukraine Scheme / Afghan Resettlement / Hong Kong BN(O)

Safer Streets 4

Peer led interventions and support for young people identified at risk of offending

Street success initiatives to inspire, guide and mentor high risk offenders

Nature based locality interventions involving high risk offenders

Alternative education provision (engineering) for young people at risk / offending

Integrated team - improve standards, quality assurance and assessment of Supported Exempt Accommodation

Deployable cameras targeting environmental crime / fly-tipping

ANPR kits to help assist and reduce vehicle crime

Scrambler motorbike to assist with neighbourhood crime and ASB

Training young people in schools about drugs, environmental crime and life-skills

Train the trainer package and lesson materials for environmental crime

Virtual Reality headsets - Alternative approach to educate children and young people about crime

Better Streets' programme to tackle environmental crime

Enhanced provision of grounds and cleansing work for bespoke locality projects

Landscaping and physical measures to improve the attractiveness of areas and design out ASB and crime hot-spots

Improvements to CCTV and street lighting

Community Safety 2023 - 2024

- Anti-social Behaviour
- Asylum and Resettlement
- CCTV
- Domestic and Sexual Abuse / Violence Against Women and Girls
- Domestic Homicide Reviews
- Hate Crime and Community Tensions
- Martyn's Law/Protect and Publicly Accessible Locations
- Migration, Asylum and Resettlement Schemes
- Prevent – Extremism and Radicalisation
- Serious Organised Crime and Exploitation
- Serious Violence and Youth Violence

Thank You

