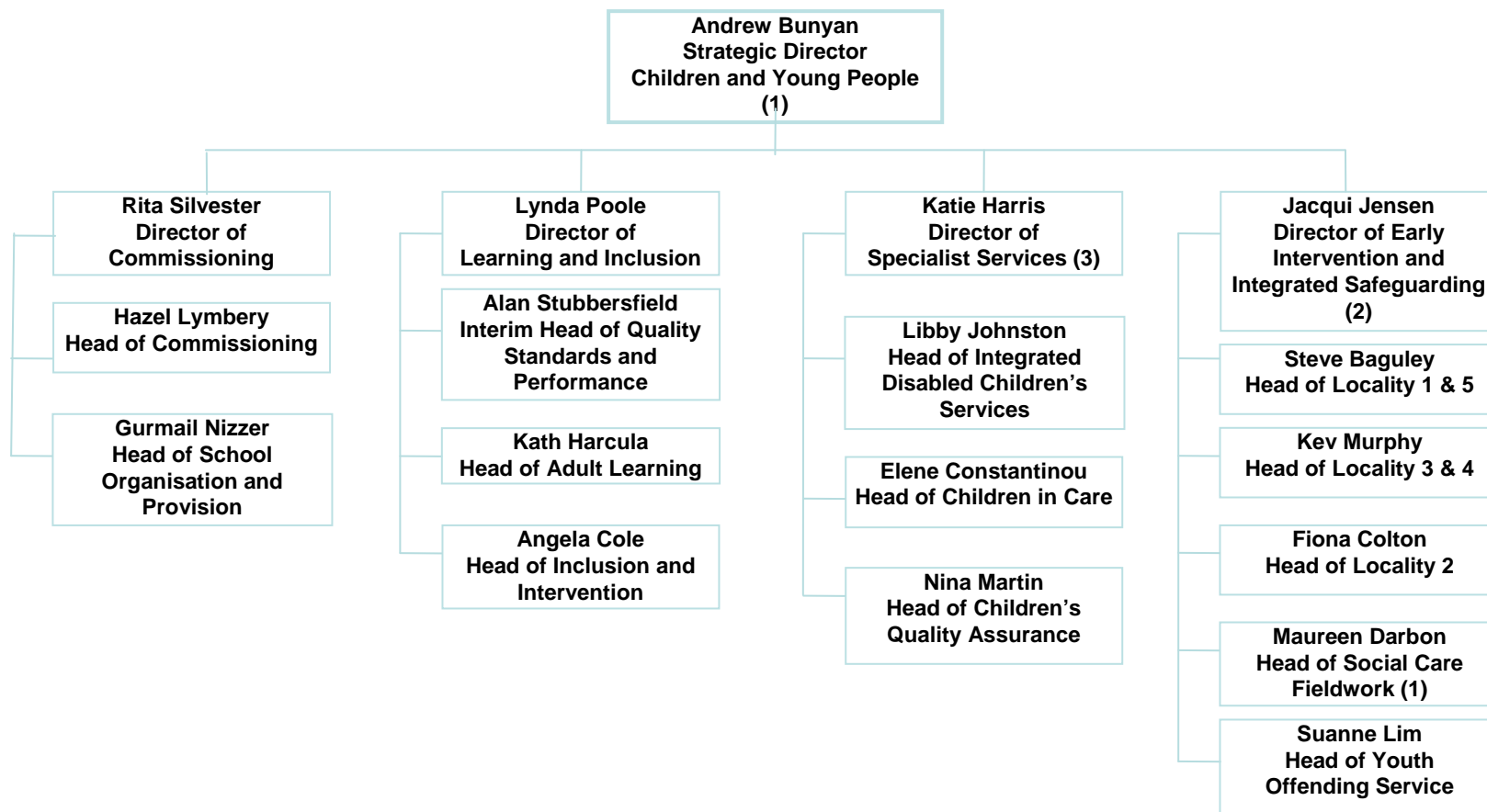


# Derby City Council – Revised Organisational Structure

## Children and Young People - Tiers 1 – 3



### Notes:

- (1) Denotes a statutory role
- (2) Role encompasses Professional Lead Safeguarding
- (3) Health staff in integrated teams will be matrix managed through contracts.

NB: Professional lead for IYSS (Cx and Youth Service) and EWS will be required (HOS / SM) determined by post holders in IS