



Derby City Council

COUNCIL CABINET
10 February 2016

ITEM 13

Report of the Cabinet Member for Communities
and City Centre Regeneration

**Infrastructure Programme Board Capital Programmes 2016/17
and 2018/17 (part)**

SUMMARY

1.1 This report sets out the following proposed 2016/17 work programmes for approval:

- Highways & Transport (H&T),
- Vehicles Plant & Equipment (VP&E)
- Land Drainage & Flood Defences (LD&FD)

We are also seeking approval for the Asset Management element of the 2017/18 H&T Work Programme.

The programmes have been developed following consultation with Members, Neighbourhood Boards, transport related forums (where appropriate) and other key stakeholders. The H&T programme covers both revenue and capital funded projects but specifically sets out in more detail the capital schemes.

- 1.2 There is also a specific recommendation to approve s106 spend as part of the H&T programme of works.
- 1.3 The H&T programme takes into account the goals of Derby's long term transport strategy as set out in the third Local Transport Plan, LTP3.
- 1.4 In the VP&E programme, funding is prioritised against a replacement criterion which is based on the expected life of the different types of vehicles and equipment; and the operational demands/requirements of the service.
- 1.5 In the LD&FD programme, funding is prioritised towards works which manage and reduce the potential for and impacts of flooding to properties and infrastructure throughout the city. Schemes are prioritised using a matrix scoring system which considers the extent of potential flood, risk to people and property, loss of critical infrastructure network, and effects on biodiversity, together with an assessment of the economic benefits/costs. As the Lead Flood Authority for the district, the Land Drainage & Flood Defence team has an overarching lead role for the coordination of Flood Risk Management Authorities in the area, in order to manage flood risk from local sources across the city.
- 1.6 The three work programmes are managed and monitored by the Infrastructure Programme Board in accordance with the Finance Procedure Rules and the

Corporate Governance Structure.

RECOMMENDATION

- 2.1 To approve the capital and revenue H&T work programme for 2016/17 and 2017/18 (Asset Management only) and the allocation of capital budgets across the LTP strategy areas, as detailed in appendix 2A.
- 2.2 To approve the s106 spend programme for the H&T work programme for 2016/17 and 2017/18 (Asset Management only) as detailed in appendix 2B.
- 2.3 To approve the proposed VP&E work programme for 2016/17. This is detailed in appendix 3.
- 2.4 To approve the proposed LD&FD work programme for 2016/17. This is detailed in appendix 4.
- 2.5 To continue to give delegated authority to the Acting Strategic Director for Communities and Place, in consultation with the relevant Cabinet Portfolio Member either the Cabinet Member for Cohesion and Integration and/or Cabinet Member for Communities and City Centre Regeneration to respond to changing priorities throughout the year by introducing new schemes or bringing forward the implementation of some schemes at the expense of others. To continue to give delegated approval to Infrastructure Programme Board as per its Term of Reference in Appendix 5. Please note the ToR is about to be updated to reflect updated roles and processes.

REASONS FOR RECOMMENDATION

- 3.1 Approval of the work programmes prior to the start of the 2016/17 financial year will allow effective planning and programming of the detailed work programmes, with the objective of ensuring that schemes and initiatives from all three are delivered in the best possible way and achieve value for money. Further, early approval of the programmes will permit the identification of any risks to the delivery of schemes within them. This will enable us to review and monitor risks to ensure they do not escalate and where possible, eliminate them.
- 3.2 With regard to the 2017/18 H&T work programme for Asset Management only, this will improve the planning and delivery of such schemes, especially larger ones which are often delivered over multiple years. Equally, DfT is encouraging local highway authorities to take a long term planning approach to the delivery of maintenance improvements. Having longer term information on when work will be carried out will improve customer satisfaction of our service and provide tangible evidence of planned improvements. It will also provide operational benefits; early contractor involvement on larger schemes, allow more competitive prices to be secured for a clear guaranteed programme of work and optimise delivery on site.

- 3.3 In the interests of the effective management of the programme, it is appropriate to maintain the delegated approvals as outlined in the Infrastructure Programme Board's Terms of Reference; to have the authority to review the three programmes and reallocate funding on the basis of the outcomes of investigations, feasibility studies and progress of other schemes. Any revisions to the Highways and Transport programme would still reflect the strategy and implementation plan set out in LTP3, whilst any reviews to either the Streetpride Plant & Equipment; or Land Drainage & Flood Defences programmes would continue to maintain the methodology of their initial development
- 3.4 It is essential that these work programmes, particularly the Streetpride Plant & Equipment programme, remain flexible to accommodate the outcomes of internal re-organisations, restructures, changing work patterns and operational commitments. This approach will ensure that budgets continue to be focussed on key work areas.



COUNCIL CABINET
10 February 2016

Report of the Acting Strategic Director Communities and Place

SUPPORTING INFORMATION

CONTEXT – LTP3

- 4.1 Extensive research, analysis and appraisal was carried out to develop Derby's third Local Transport Plan, LTP3, which presents our long term transport strategy from 2011-2026. The Highways and Transport work programme aims to achieve the objectives set out in LTP3.
- 4.2 In the current climate of financial constraint and uncertain future funding the LTP3 strategy is balanced across all areas of transportation. Funding will be used to maintain and make best use of our existing assets, and support additional measures to encourage the use of alternative modes of travel to the private car.
- 4.3 Our key priority areas for delivering a balanced long term transport strategy are:

Asset Management: maintaining what we have

- Delivering significant planned maintenance

Network Management: managing traffic flows

- A52 Congestion Management scheme*
- Using technology to make the best use of the existing network
- Targeting road safety and casualty reduction

Supporting 'Active Travel' and Public Transport: supporting and encouraging travel choice

- Providing information on all the travel alternatives available through promotion and training
- Delivering and promoting walking and cycling schemes and initiatives
- Working in partnership with Public Transport providers to improve services

Within the balanced approach of the long term transport strategy, we have recognised an urgent need to invest in maintaining our transport asset. Our priority for the allocation of limited resources over the first 5 years of LTP3 has been:

*it should be noted that grant funding for this scheme has not yet been confirmed.

- 4.6 Our commitment to Asset Management is shared by the Government, who proposed changes to Maintenance Block Funding in their documents, 'Gearing up for efficient highway delivery and funding' which was published in January 2014. The document outlined 3 themes for highways maintenance funding:
- Incentivising highway maintenance efficiencies
 - A Highways Maintenance Challenge Fund
 - Highways Maintenance Block formula changes

- 4.7 A formal consultation in November 2014, proposed that the majority of funding would continue to be allocated on a 'needs basis', which means that every local highway authority would continue to receive funding as calculated by a formula. This formula comprises information on key highway assets including carriageway lengths, bridges, street lighting, footway extents and cycling infrastructure. Views were also sought about the proposal to allocate an element of funding on an 'incentive basis'. The level of funding received would be based on a local authority's record and progress in pursuing efficiency using asset management principles.
- 4.8 In December 2014, DfT announced that £6billion will be made available between 2015/16 and 2020/21 for local highways maintenance funding. Of that amount, £578million has been set aside for the incentive fund.

CONSULTATION

- 4.9 Every year we engage with Neighbourhood Boards and Forums to understand their local priorities for investment in transport. The priorities they choose for their local areas inform our annual programme of work. Neighbourhood Boards were consulted about their top two highways, traffic and transport issues, plus a reserve priority between September and November 2015. Appendix 2C highlights how these priorities have been included in the programme. Please note that discussions are still underway with Chaddesden and Littleover Neighbourhood Boards.
- 4.10 Neighbourhood Boards were also consulted on the s106 programme. Appendix 2B shows the schemes on the 2016/17 and 2017/18 programmes that are being funded by s106.
- 4.11 Consultation on the proposed H&T programme was undertaken with our Sustainable Transport Partnership colleagues between the 6 and 13 January 2016. The comments and feedback received are welcome; suggestions relating to specific schemes have been passed to relevant colleagues for consideration.
- 4.12 The H&T programme aims to allocate maximum investment in maintenance in line with LTP3 priorities whilst maintaining the necessary minimum allocation to other transport strategy areas. Every effort has also been made to address identified neighbourhood priorities.
- 4.13 The corporate allocation includes £220k (£175k 16/17 and £45k 17/18 so far) from Section 106 highways contributions received in respect of a range of developments is included as part of the programme for approval. This is presented in appendix 2C.
- 4.14 The s106 programme has been developed in accordance with the principles of the city council's Supplementary Planning Documents on Planning Obligations and in line with the specific terms of each agreement and in accordance with the protocol for engaging with Neighbourhood Boards.

- 4.15 Revenue budgets within Highways and Transport are targeted towards delivering the objectives set out in the LTP, including public transport, traffic management, parking services, traffic control, road safety, highways development control, highways and structures maintenance and street lighting. Schemes and initiatives that will be implemented or investigated through revenue budgets are referenced accordingly in appendix 2.

Vehicles Plant & Equipment Work Programme

- 4.20 Streetpride provides many of the critical, frontline services that people who live, work and visit Derby use every day. Many people's first impression of Derby will be influenced by the quality of our grounds maintenance and street cleansing services. We will be praised or criticised by how well or badly we collect refuse and recycling.
- 4.21 Streetpride are committed to working with local people to encourage pride in the places they live. We work closely with the city's residents to ensure that the services we deliver are responsive, sensitive and appropriate. Local communities have also been instrumental in transforming how we continue to deliver these services, while achieving maximum value for money.
- 4.22 In 2016/17, the VPE programme includes £25m which will be Derby's contribution to the build costs of the new waste plant on Sinfin Lane. Construction will commence during 2016 and the facility will be fully operational in April 2017.

Flood Defence and Land Drainage

- 4.23 The Land Drainage team prioritises drainage and flood defence schemes which aim to reduce the potential for, and consequences of, flooding incidents by managing, reducing and controlling the rate of surface water discharge from each location, whilst improving water quality, thus promoting biodiversity benefits, which aligns with central Government and European policies.
- 4.24 Flood defence and highways drainage works are prioritised using a risk matrix scoring system which considers the extent of potential flood, risk to people and property, loss of critical infrastructure network, and effects on biodiversity, together with an assessment of the economic benefits/costs
- 4.25 The team prioritises schemes of works which offer flood defence and highways drainage benefits while wherever practicable, returning watercourses to their natural state, thus improving environmental benefits.

OUR CITY, OUR RIVER

- 4.26 The Our City, Our River (OCOR) project will reduce the risk of flooding from the River Derwent, whilst maximising regeneration opportunities and environmental opportunities. OCOR has its own programme board, but is also within the remit of the Infrastructure Programme Board.

Delivery of the project is split into 3 packages, which will be delivered between 2015 and 2022, subject to necessary funding being secured. In 2016/17, work on package 1 will continue with an allocated budget of £10,913k.

OTHER OPTIONS CONSIDERED

- 5.1 The development of the Highways & Transport programme has involved consideration of various options for the inclusion of projects. The draft programme recommended is considered to be the best fit to the objectives of LTP, the local priorities of Members and Neighbourhood Boards and the mitigation of development, given the overall level of resources available.
- 5.2 The Vehicles Plant & Equipment and Land Drainage & Flood Defences work programmes have been developed in consideration against corporate objectives, the Streetpride Service Standards and our statutory obligations. It is considered that they offer the maximum value for money considering the resources available.

This report has been approved by the following officers:

Legal officer Financial officer Human Resources officer Estates/Property officer Service Director(s) Other(s)	Janie Berry Amanda Fletcher Liz Moore Alistair Burg Tim Clegg Christine Durrant, David Gartside, David Bartram, Andy Hills, Nick Riley, Ann Webster
--	--

For more information contact: Background papers: List of appendices:	Rachel Shardlow 01332 641770 rachel.shardlow@derby.gov.uk None Appendix 1 Implications Appendix 2 Highways and Transport Work Programme 2A – Programme Summary and Programme Detail 2B – s106 Programme 2C – Neighbourhood Priorities Appendix 3 Vehicles, Plant & Equipment Work Programme Appendix 4 Flood Defence & Land Drainage Work Programme Appendix 5 Infrastructure Board Terms of Reference
---	---

IMPLICATIONS

Financial and Value for Money

- 1.1 This report seeks to continue delegated authority as outlined in the main body of the report.
- 1.2 All scheme changes are reported to the Infrastructure Programme Board and will be recorded appropriately, identifying the details and reasons for the scheme variation, and are managed in consultation with the respective technical, legal and finance officers.
- 1.3 The procurement of plant and equipment will be in accordance with the Contract Procedure Rules 2013 and therefore fulfil the primary objectives of:
 - Ensuring the Council can demonstrate that it fulfils its duty of achieving value for money
 - Ensuring that the Council complies with current best practice and relevant English and European law
 - Providing contracting roles and procedures which protect Members and Officers from any allegation of acting unfairly or unlawfully
 - Ensuring that any risks associated with entering into contracts are assessed and appropriately mitigated.

Legal

- 2.1 In developing the H&T work programme we have to have regard to delivering the statutory Network Management duty of 'securing the expeditious movement of traffic on the road network' under the Traffic Management Act 2004, as well as the general duty to maintain the highway network in a condition which is safe for use. Further, In developing the Streetpride Plant & Equipment and Land Drainage & Flood Defence work programmes, consideration must be given to fulfilling our statutory obligations.

- 2.2 As local authority we are responsible for a range of statutory duties, including those contained in the following pieces of legislation:
- Environmental Protection Act 1990
 - Household Recycling Act 2003
 - Landfill Allowance and Trading Scheme (England) Regulations 2004
 - Waste and Emissions Trading Act 2003
 - Refuse Disposal (Amenity) Act 1978
 - Controlled Waster regulations 1992
 - Clean Neighbourhoods and Enforcement Act 2005
 - Flood and Water Management Act 2010
 - Flood Risk Regulations
 - Water Industry Act 1991
 - Litter Act 1983
 - Dogs (Fouling of Land) Act 1996
 - Control of Pollution Act 1974
 - Highways Act 1980
 - Traffic Management Act 2004

Personnel

- 3.1 If budgets are approved at levels anticipated in the report, it is not thought there would be any personnel implications.
- 3.2 If approved budgets are lower than anticipated, and it is proposed that fewer staff may be required to deliver the work programmes, any such proposals would be managed in line with Council policies and practice, and legislative requirements.

IT

- 4.1 There are no IT implications in this report or these work programmes.

Equalities Impact

- 5.1 Extensive consultation with Derby diversity forums was carried out throughout the preparation of LTP3. We worked with the Equality and Diversity Manager and undertook an Equality Impact Assessment, to consider how the implementation of transport infrastructure and initiatives are working towards tackling equality and the needs and requirements as set out in the Equality Act 2010.
- 5.2 Streetpride provide a service to assist disabled residents in putting our wheeled bins and offer provision to residents who have medical waste to dispose of. They are also very reactive to requests for repairs from disabled people about uneven and damaged footways, which can present difficulties for wheelchair users and those with mobility impairments. Streetpride are also leading a working group to tackle the issue of A-boards in the city, which are having a negative impact on disabled people and parents with push-chairs.

Health and Safety

- 6.1 A Strategic Environmental Assessment (SEA) of the LTP3, which includes the consideration of human health through a Health Impact Assessment (HIA), considered the potential impact of the long term transport strategy, and schemes, or combinations of schemes within the implementation plan, on the historic, social and natural environment.
- 6.2 Delivery of the schemes within the three separate programmes is undertaken with due regard to relevant health & safety legislation and guidelines.

Environmental Sustainability

- 7.1 These programmes provide direct contributions to the environmental sustainability of the city.
- 7.2 The H&T work programme includes measures to help reduce carbon emissions from transport
- 7.3 The VP&E programme promotes and facilitates recycling activities and preserves the city's green spaces through ground maintenance activities. There are also initiatives to promote the use of washable nappies rather than disposable ones and to encourage home composting.
- 7.4 The FD&LD programme strives to reduce the occurrence of flooding in the city, and also through the implementation of sustainable drainage systems.

Property and Asset Management

- 8.1 Investment in the maintenance of our transport assets is currently our highest priority for the allocation of limited resources in the short term. The proposed 15/16 H&T programme includes a package of planned asset maintenance.

Risk Management

- 9.1 Risks identified during the delivery of these work programmes will be reported to the Infrastructure Programme Board and managed and mitigated appropriately.
- 9.2 Design and feasibility work can only be capitalised if the schemes will be delivered in the near future. If such work does not result in the delivery of a scheme, design and feasibility costs cannot be capitalised and will need to be charged to revenue.

Corporate objectives and priorities for change

- 10.1 The H&T, VP&E; and FD&LD work programmes will contribute directly towards achieving the following Council priorities:
 - Inspiring start in life – removing transport and highway barriers to education, undertaking grass cutting in parks, playing fields and green spaces to be enjoyed by Derby's children and young people

- Inspiring working life – facilitating sustainable and affordable access to jobs, keeping highway gullies clean and operational, ensuring a functioning highway network for the city's organisations, workers, visitors and residents
- Inspiring place to live - providing an effective & functional highway network, providing an effective & functional household waste and recycling service

PROPOSED HIGHWAYS AND TRANSPORT WORK PROGRAMME**Summary**

This paper provides information on the proposed Highways and Transport Programme in 2016/17 and 2017/18 (Asset Management only)

Table 1.1 2016/17 total allocations by strategy area (values are '000's)

Strategy area	LTP	S106	Revenue	Other	Total
Asset Management					
Highways Maintenance - carriageways, footways, drainage and street lighting	1633	75	0	297	2005
Structures Maintenance – including land drainage and flood defence	443	0	0	0	443
ITS Network Management Maintenance – including signal refurbishments	172	22	0	0	194
Asset Management TOTAL	2248	97	0	297	2642
Network Management					
Strategic Network Management	550	75	0	21	646
Local Traffic Management	445	3	0	0	448
Casualty Reduction	29	0	0	0	29
LUP and Strategic Integrated Transport Schemes	0	0	0	2000	2000
Network Management TOTAL	1024	78	0	2021	3123
Active Travel					
Smarter Choices	10	0	0	0	10
Pedestrian Accessibility	10	0	0	0	10
Cycle Derby	58	0	0	0	58
Active Travel TOTAL	78	0	0	0	78
Public Transport					
Public Transport	150	0	0	0	150
Public Transport TOTAL	150	0	0	0	150
Asset Management Total	2248	97	0	297	2642
Integrated Transport Total	1252	78	0	2021	3351
TOTAL	3500	175	0	2318	5993

Table 1.2 Scheme Detail 2016/17

Asset Management – looking after all highways and transport assets, including carriageways, footways and highways structures, intelligent transport systems and drainage to minimise lifetime costs and to maintain safety for highway and transport users.

This is split into 3 sub-sections:

- Highways Maintenance (HM)
- Structures Maintenance (SM)
- Intelligent Transport Systems Maintenance (IM)

AM – Highway Maintenance (HM)						
Ref	Scheme	Contribution (£'000s)				Ward/Priority See ward key
		LTP	S106	Rev	Other	
Highway Maintenance						
HM K01	Design of Future Years Schemes Design: Essential budget to ensure rolling programme of work and to improve implementation of schemes in 1st quarter of financial year.	50	0	rev	0	City
HM R01	Development of Highways Asset Management Plan Officer input or strategy and policy development: Development of Highway Asset Management Plan	0	0	rev	0	City
HM R02	Management of the Derby and Nottingham Highway Maintenance Framework Officer input or strategy and policy development: Management of the Derby & Nottingham Highways Maintenance framework	0	0	rev	0	City
HM R03	Streetpride Highway Maintenance In House Service Implementation: Reactive / routine maintenance, including winter maintenance operations and small scale improvements	0	0	rev	0	City
HM R08	Development of IT Systems Officer input or strategy and policy development: Development of IT systems (Atlas)	0	0	rev	0	City
Carriageway Maintenance						
HM K02	Carriageway Micro-asphalt Design and Implementation: Schemes will be selected from the preparation pool, based on need and road condition. To include Neighbourhood Board selected locations.	250	0	0	0	City
HM K03	Carriageway Re-texturing Design and Implementation: Schemes will be selected from the preparation pool, based on need and road condition.	25	0	0	0	City

HM K04	Carriageway Joint Sealing Design and Implementation: Schemes will be selected from recent surveys	50	0	0	0	City
HM K05	Carriageway Concrete Treatments Design and Implementation: Schemes will be selected from recent surveys	45	0	0	0	City
HM K06	Cavendish Roundabout Design and Implementation: Carriageway planning and resurfacing	150	0	0	0	Nor
HM K07	Dale Road, Spondon Design and Implementation: Carriageway resurfacing	55	75	0	0	Spo 1 & 2
Carriageway Surface Dressing						
HM K08	Carriageway Surface Dressing Design and Implementation: Schemes will be selected from the preparation pool, based on need and condition of the road. To include Neighbourhood Board selected locations.	400	0	0	0	City
Footway Maintenance						
HM K09	Normanton Road (Lowerdale Road to Inner Ring Road) Design and Implementation: Footway maintenance	160	0	0	0	Arb
HM K10	Southcroft Design and Implementation: Footway maintenance	35	0	0	0	Bla 2
HM K11	Sinfin Avenue Design and Implementation: Footway maintenance	60	0	0	0	Che 1
Footway Slurry Sealing						
HM K12	Footway Slurry Sealing (City Wide) Design & Implementation: Slurry Sealing programme based on priority list. To include Neighbourhood Board selected locations.	300	0	0	0	City
Street Lighting						
HM R07	Street Lighting Private Finance Initiative (PFI) Contract Officer input or strategy and policy development: Delivery of street lighting improvements	0	0	0	PFI	City
HM K14	Street Lighting Bollards De-illumination Implementation: Replacement of illuminated bollards with passively safe, diamond grade, retro-reflective non-illuminated bollards. Implementation of this scheme will result in financial savings on maintenance and energy within 6 years	53	0	0	0	City
HM K15	West Chellaston Implementation: Street lighting remedial works to achieve adoptable standard	0	0	0	297	Che
Total		1633	75	0	297	

AM – Structures Maintenance (SM)						
Ref	Scheme	Contribution (£'000s)				Ward/Priority See ward key
		LTP	S106	Rev	Other	
Land Drainage & Flood Defence						
SM K20	Kedleston Road Design and Implementation: Construction of new highway drain and improved surface water collection units	30	0	0	0	Als
SM K21	Pastures Hill Design and Implementation: Repair of highway drain and improved surface water collection units	43	0	0	0	Lit
Structural Maintenance						
SM K01	Principal Bridge Inspections Investigation & Feasibility: To carry out the Principal Bridge Inspections and structural reviews programme. This work is essential to identify and maintain important structures on our highway network	50	0	0	0	City
SM K02	Structural Maintenance Projects Design & Implementation: Bridge maintenance and unforeseen reactive works	60	0	0	0	City
SM K03	A52/Wyvern Access Bridge Design and Implementation: Refurbishment including concrete repairs and replacement of bearings, joints and seals.	160	0	0	0	Cha
SM K04	Pentagon Island Bridge Deck Design and Implementation: Refurbishment including concrete repairs and replacement of bearings, joints and seals.	100	0	0	0	Cha
Total		443	0	0	0	

AM - Intelligent Transport Systems Maintenance (IM)						
Ref	Scheme	Contribution (£'000s)				Ward/Priority See ward key
		LTP	S106	Rev	Other	
Signal Refurbishments						
IM K01	Portland Street/St Thomas Road Design and Implementation: Signal junction refurbishment	50	22	0	0	Nor/Arb
IM K02	Nottingham Road/St Marks Road Design and Implementation: Pedestrian crossing upgrade	50	0	0	0	Der
IM K03	Burton Road by Heath Avenue	35	0	0	0	Lit

	Design and Implementation: Pedestrian crossing upgrade					
IM K04	A514 Corridor Signal Conversion Design and Implementation: project to convert to digital communications	20	0	0	0	Alv/Arb/ Bou/SIn
IM K05	Signal Controllers Design and Implementation: replacement and upgrade of signal controllers	17	0	0	0	City
Total		172	22	0	0	

Network Management – the efficient management of the transport network and improvements to the existing network to improve the efficiency of junctions and links

This is split into 4 sub-sections:

- Strategic Network Management (NM)
- Local Traffic Management (TM)
- Casualty Reduction (CR)
- Land Use Policies & Strategic Transport Schemes (SI)

NM – Strategic Network Management (NM)						
Ref	Scheme	Contribution (£'000s)				Ward/Priority See ward key
		LTP	S106	Rev	Other	
Strategic Junction Traffic & Pedestrian Improvement Schemes						
NM K01	Stenson Road/Blagreaves Lane Design and some Implementation: continuation of work commenced in 2015/16 to implement a signalised junction	300	0	0	0	Bla
NM K02	Warwick Avenue/ Carlton Road Design and Implementation: Pedestrian crossing upgrade	65	0	0	0	Abb/Bla/ Lit
NM K03	London Road Design and Implementation: installation of controlled crossing facility	0	75	0	0	Alv
NM K04	Outer Ring Road Junction Improvements Implementation: Implementation of speed limit changes and road safety improvement	0	0	0	21	City
Network Management Duty						
NM K05	Strategic Scheme Development Investigation, Feasibility and some Design: Continuation of work started in 2015/16	60	0	0	0	City
NM K06	Parking Study Implementation Investigation and Implementation: continued implementation of Parking Study recommendations and further investigation of new issues	25	0	0	0	City
NM K07	Air Quality Management Investigation and scheme development: Investigation and development of schemes and initiatives to address Air Quality exceedences	100	0	0	0	City
Total		550	75	0	21	

NM – Local Traffic Management (TM)						
Ref	Scheme	Contribution (£'000s)				Ward/Priority See ward key
		LTP	S106	Rev	Other	
Traffic Management scheme Investigation, Design and implementation						
TM K01	Maxwell Avenue/Kedleston Old Road and Kedleston Road Access Road Investigation, Design and Implementation: Measures to address concerns of parking by non-residents	15	0	0	0	Als 1
TM K02	St Marks Road Area Investigation and Implementation: Measures to address traffic management concerns	10	0	0	0	Der 1
TM K03	Prince Charles Avenue Investigation, Design and Implementation: Provision of traffic management measures to support the district centre	100	0	0	0	Mac
TM K04	Raynesway Investigation and Implementation: Measures to address traffic management concerns	10	0	0	0	Alv 1
TM K05	Alvaston Junior School Investigation and Implementation: Measures to address school parking concerns	10	0	0	0	Alv 2
TM K06	Eliot Road Investigation and possible Implementation: Measures to address parking and access concerns	10	0	0	0	Bla 1
TM K07	Grampian Way Investigation and possible Implementation: Measures to address safety concerns	10	0	0	0	Sin 1
TM K08	Radcliffe Drive/Rowditch Place/Burton Road Investigation and Implementation: Measures to address parking, access and traffic management concerns	10	3	0	0	Abb 1
TM K09	Maple Drive and Parkway Investigation and Implementation: Measures to address school run generated parking and traffic management concerns	10	0	0	0	Che 2
TM K10	Dale Road Investigation and possible Implementation: Measures to address traffic management	15	0	0	0	Nor 2

	concerns					
TM K11	Castings Road, Shaftesbury Estate, Harrington Street and Pear Tree Crescent Investigation and Implementation: Measures to address traffic management concerns	10	0	0	0	Arb 1
TM K12	Various Streets in Mickleover Investigation and possible Implementation: Measures to address traffic management and congestion concerns	10	0	0	0	Mic 1
TM K13	Belper Road Investigation, Design and Implementation: Traffic Calming measures	15	0	0	0	Dar 1
TM K14	Stepping Lane/Slack Lane Investigation and Implementation: Junction protection	10	0	0	0	Mac 1
Traffic Management Schemes for Implementation						
TM K15	Hillsway/The Hollow Implementation: Implementation of outcomes of 2015/16 investigation	25	0	0	0	Lit 1
TM K16	Waiting Restrictions Implementation: Introduction of minor amendments at various locations, including: <ul style="list-style-type: none"> Babington Lane Morledge Fox Street 	15	0	0	0	City
TM K17	Pay by Phone Implementation: Introduction of pay by phone facility at various locations	20	0	0	0	City
TM K18	Parking Restrictions Implementation: Review of parking controls to maximise parking opportunities and turnover.	100	0	0	0	City
TM K19	Neighbourhood Board Priorities Implementation: delivery of remaining neighbourhood priority schemes	40	0	0	0	Cha
Total		445	3	0	0	

NM – Casualty Reduction (CR)						
Ref	Scheme	Contribution (£'000s)				Ward/Priority See ward key
		LTP	S106	Rev	Other	
Safety Schemes for Implementation						
CR K01	A516 Uttoxeter New Road/Great Northern Road Investigation and Implementation: Amendments to lane markings and traffic signs	19	0	0	0	Abb
CR K02	Small Scale Schemes for Implementation Implementation: Measures to reduce personal injury accidents at the following junctions: <ul style="list-style-type: none">A5111 Newdigate Street/Village	10	0	0	0	City

	Street					
	• A514 Osmaston Road/Ascot Drive					
Total		29	0	0	0	

NM – Land Use Policy & Strategic Transport Schemes (SI)						
Ref	Scheme	Contribution (£'000s)				Ward/Priority See ward key
		LTP	S106	Rev	Other	
Strategic Transport Scheme Development						
SI K01	A52 Congestion Management Officer input, business case development & Design: Further developing the business case to deliver a major scheme on the A52.	0	0	0	2000	City
SI R07	Strategic Transport Scheme Development Officer input or strategy and policy development: The progression of identified strategic transport schemes	0	0	rev	0	City
SI R02	Strategic Modelling Improvements Officer input or strategy and policy development: Officer input into continued Maintenance of DATM. Includes revalidating and upgrading of the DATM model	0	0	rev	0	City
Integration of Transport and Land Use Planning						
SI R06	Strategic Transport Priorities Officer input or strategy and policy development: Coordination and support for the city's input into regional, sub regional prioritisation devolved funding and policy	0	0	rev	0	City
SI R03	Input into Core Strategy & LDF Officer input or strategy and policy development: Officer Input into development of the Core Strategy and Local Development Framework.	0	0	rev	0	City
SI R04	Growth Point/HMA Work Officer input or strategy and policy development: Officer Input into Growth Point/HMA work.	0	0	rev	0	City
SI R05	Planning Applications & Transport Assessments Officer input or strategy and policy development: Ongoing review of planning applications and transport assessments.	0	0	rev	0	City

Total	0	0	0	2000	
-------	---	---	---	------	--

Active Travel – supporting and encouraging travel choice, providing information on travel alternatives available through promotion and training, delivering and promoting walking and cycling schemes and initiatives

This is split into 3 sub-sections:

- Smarter Choices (SC)
- Pedestrian Accessibility Improvements (PA)
- Cycle Derby (CD)

AT – Smarter Choices (SC)						
Ref	Scheme	Contribution (£'000s)				Ward/Priority See ward key
		LTP	S106	Rev	Other	
Marketing & Travel Awareness Activities						
SC R01	Smarter Choices Implementation Implementation: Pursue smarter choice initiatives, to ensure impacts of developments are mitigated and to ensure people are aware of, and encouraged to use, all of their travel options. Progress dependent upon available resources. This work supports investment in all LTP3 strategy areas.	0	0	rev	0	City
SC K01	Littleover Sustainable Journeys Investigation, Design and Implementation: measures to encourage cycling in various locations but with a focus on Heatherton	10	0	0	0	Lit 2
		10	0	0	0	

AT – Pedestrian Accessibility Improvements (PA)						
Ref	Scheme	Contribution (£'000s)				Ward/Priority See ward key
		LTP	S106	Rev	Other	
Dropped Crossings & Junction Protection						
PA K01	Mickleover Dropped Crossings Investigation, Design and Implementation: Dropped crossings at a number of locations within Mickleover	10	0	0	0	Mic 2
Total		10	0	0	0	

AT – Cycle Derby (CD)						
Ref	Scheme	Contribution (£'000s)				Ward/Priority See ward key
		LTP	S106	Rev	Other	
Cycle Network Development						
CD K01	Small scale cycle network improvements Design & Implementation: Small scale cycle improvements including signing and lining to overcome barriers to cycling and provide better route continuity. Locations include: <ul style="list-style-type: none">The Hollow/Hedingham Way	23	0	0	0	City
CD K02	One Way Orders Investigation and Implementation: changes to existing one-way orders to improve access for cyclists. Locations include: <ul style="list-style-type: none">Bramble StreetGower Street	25	0	0	0	City
CD K03	Mandatory Cycle Lanes Investigation and Implementation: review of existing TRO's and implementation of appropriate replacements	10	0	0	0	City
Education, Training, Promotion & Information						
CD R01	School Cycle Training Cycle skills training for school pupils. Includes Bikeability levels 1 and 2 and the possible development of level 3, Summer Bikeability, Scootability, Learn to Ride.	0	0	rev	0	City
CD R02	Cycling activities & initiatives Including: Promotions and marketing, Support to Derby Strategic Cycle Forum, Corporate Champions: Work Area Team	0	0	rev	0	City
		58	0	0	0	

Public Transport – supporting and encouraging travel choice, providing information on travel alternatives, working in partnership with public transport providers to improve services

Public Transport (PT)						
Ref	Scheme	Contribution (£'000s)				Ward/Priority See ward key
		LTP	S106	Rev	Other	
Public Transport Infrastructure Improvements						
PT K01	Morley Road Bus Stops Investigation and Implementation: Measures to improve existing bus stops	15	0	0	0	Oak 1
PT K02	Bus Stand Review Investigation and Implementation: Review to identify the need for additional bus stands in the city centre and implementation	45	0	0	0	Arb
PT K03	Bus Stop Clearway Review Implementation: Continuation of work started in 2015/16 to provide a consistent approach. Will also include the implications of the recent Arriva route review	65	0	0	0	City
PT K04	Derby Bus Station Implementation: Completion of the 2015/16 scheme to widen access on to St Alkmunds Way	25	0	0	0	Arb
Quality of Service Improvements						
PT R01	Revenue Support for Contracted Local Bus Services Officer input or strategy and policy development	0	0	rev	0	City
PT R02	Concessionary Fares Officer input or strategy and policy development: Implementing our statutory duty to provide a concessionary fares scheme for older people and certain groups of disabled people specified by the government as part of the English National Concessionary Travel Scheme (Gold Card scheme implementation). Also to continue with the Bline scheme for young people up to the age of 19	0	0	rev	0	City
Total		150	0	0	0	

Table 1.3 2017/18 total allocations by strategy area (values are '000's)

Strategy area	LTP	S106	Revenue	Other	Total
Asset Management					
Highways Maintenance - carriageways, footways, drainage and street lighting	2045	0	0	0	2045
Structures Maintenance – including land drainage and flood defence	545	0	0	0	545
ITS Network Management Maintenance – including signal refurbishments	210	45	0	0	255
Asset Management TOTAL	2800	45	0	0	2845

Table 1.4 Scheme Detail 2017/18

AM – Highway Maintenance (HM)						
Ref	Scheme	Contribution (£'000s)				Ward/Priority See ward key
		LTP	S106	Rev	Other	
Highway Maintenance						
HM L01	Design of Future Year Schemes Design: essential budget to ensure a rolling programme of feasibility, investigation and detailed design work in preparation of early future year delivery the following financial year	50	0	rev	0	City
HM R01	Highway Asset Management Officer input: <ul style="list-style-type: none">Development of the Highway Asset Management Strategy and PlanDelivery of outputs from the Highways Maintenance LEAN ReviewDelivery of outputs from the Self-Assessment QuestionnaireBenchmarking and Collaboration in Highway Maintenance Services	0	0	rev	0	City
HM R02	Streetpride Highway Maintenance In House Service Implementation: reactive and routine maintenance including winter maintenance / resilience operations, as well as delivery of small/medium scale projects within the Highways and Transport Work Programme	0	0	rev	0	City
HM R03	Management of the Nottingham and Derby Joint Framework Service Contract for Highway Maintenance Officer input: management and delivery of larger and specialist projects in the Highways and Transport Work Programme through the contract	0	0	rev	0	City
HM R04	Development of IT Systems Officer input : development of Confirm System for highways asset management, including Highway Inspections, TMA	0	0	rev	0	City

	Permits and asset lifecycle planning					
Carriageway Maintenance						
HM L02	Carriageway Micro-Asphalt Surface Treatment Design and Implementation: schemes will be selected from the 3 year preparation pool, based on need and condition of road. To include Neighbourhood Board Priorities	300	0	0	0	City
HM L03	Carriageway Retexturing Design and Implementation: schemes will be selected from the preparation pool, based on need and condition of road.	50	0	0	0	City
HM L04	Carriageway Joint Sealing Design and Implementation: locations will be determined from surveys and will complement the carriageway surface treatment programmes	50	0	0	0	City
HM L05	Carriageway Concrete Treatment Design and Implementation: locations will be determined from recent surveys	75	0	0	0	City
HM L06	A52 Wyvern and Pride Park Transport Improvements Design and Implementation: maintenance contribution to congestion management scheme. This is part of the funding match.	200	0	0	0	Cha
Carriageway Surface Dressing						
HM L07	Surface Dressing Programme Design & Implementation: schemes will be selected from the 3 year preparation pool, based on need and the condition of the carriageway. To include Neighbourhood Board priorities	400	0	0	0	City
Footway Maintenance						
HM L08	In House Projects Design and Implementation: the delivery of Neighbourhood Board projects	300	0	0	0	City
HM L09	Victory Road Realignment Design and Implementation: treatment of surround footways to compliment the overall scheme	320	0	0	0	Sin
Footway Slurry Sealing						
HM L10	Footway Slurry Sealing (City Wide) Design and Implementation: Slurry Sealing programme based on priority list. In addition, Neighbourhood priority schemes detailed below:	300	0	0	0	City
Street Lighting						
HM R05	Street Lighting PFI Contract Officer input: delivery of street lighting improvements via the PFI, including roll out of LED project across the city	0	0	0	PFI	City
Total		2045	0	0	0	

AM – Structures Maintenance (SM)						
Ref	Scheme	Contribution (£'000s)				Ward/Priority See ward key
		LTP	S106	Rev	Other	
Land Drainage & Flood Defence						
SM L20	Duffield Road, Darley Abbey Design and Implementation: construction of new highway drainage and repair of existing drainage and SUDS drainage	75	0	0	0	Dar
Structural Maintenance						
SM L01	Principal Bridge Inspections Investigation and Feasibility: To carry out the Principal Bridge Inspections and structural reviews programme. This work is essential to identify and maintain important structures on our highway network	70	0	0	0	City
SM L02	Structural Maintenance Projects Design and Implementation: Bridge maintenance and unforeseen reactive works	100	0	0	0	City
SM L03	Uttoxeter Old Road Design and some Implementation: bridge refurbishment	200	0	0	0	Abb, Mac
SM L04	A514/A5111 Pedestrian Over Bridge (Spider Island) Design and some Implementation: bridge refurbishment	100	0	0	0	Alv, Bou, Sin
Total		545	0	0	0	545

AM - Intelligent Transport Systems Maintenance (IM)						
Ref	Scheme	Contribution (£'000s)				Ward/Priority See ward key
		LTP	S106	Rev	Other	
Signal Refurbishments						
IM L01	Osmaston Road/Ivy Square Design and Implementation: puffin crossing refurbishment	35	0	0	0	Arb
IM L02	Sitwell Street, Spondon Design and Implementation: puffin crossing refurbishment	35	0	0	0	Spo
IM L03	Nottingham Road/Lyndhurst Grove Design and Implementation: puffin crossing refurbishment	35	0	0	0	Cha
IM L04	Stenson Road/Sunnyhill Avenue Design and Implementation: puffin crossing refurbishment	35	0	0	0	Bla
IM L05	A514 Chellaston Road (adj Golden Pheasant PH) Design and Implementation: puffin crossing refurbishment	35	0	0	0	Che
IM L06	Nottingham Road/Willowcroft Road Design and Implementation: traffic signal refurbishment	30	45	0	0	Spo

IM L07	Stenson Road Railway Bridge Design: design of traffic signal refurbishment scheme for delivery in 2018/19	5	0	0	0	Bla
Total		210	45	0	0	255

Ward Key

Ward	Code
Abbey	Abb
Alvaston	Alv
Allestree	Als
Arboretum	Arb
Blagreaves	Bla
Boulton	Bou
Chaddesden	Cha
Chellaston	Che
Citywide	City
Darley	Dar
Derwent	Der
Littleover	Lit
Mackworth	Mac
Mickleover	Mic
Normanton	Nor
Oakwood	Oak
Sinfin	Sin
Spondon	Spo

Appendix 2B: 2016/17 and 2017/18 Highways and Transport s106 Programme

Ref	s106 ref number	Development Location/ Developer	Ward of proposed scheme	Amount	Scheme Name	Neighbourhood board comments / suggestions
HM K07	CitC1-01b	City Contracting, Station Road	Spondon	14	Dale Road Carriageway Resurfacing	Use of s106 suggested by Spondon NHB
HM K07	Ray1-04	New Raynesway	Spondon	61	Dale Road Carriageway Resurfacing	Use of s106 suggested by Spondon NHB
IM K01	Sains3-01c	Sainsbury's, Peak Drive	Sinfin	22	Portland Street/St Thomas Road Signal Junction Refurbishment	None received
NM K03	DerC2-03c	Former Derby College, Pride Park	Alvaston	5	London Road District Centre – installation of controlled crossing facility	None received. Funding is still available to pursue cycle path lighting if required
NM K03	BelW3-04	Belmore Way	Alvaston	70	London Road District Centre – installation of controlled crossing facility	None received. Funding is still available to pursue cycle path lighting if required
TM K08	RowP2-02b	The Orchards, Rowditch Place	Abbey	3	Radcliffe Drive/Rowditch Place/Burton Road Measures to address parking, access and traffic management concerns	Use of s106 suggested by Abbey NHB
Total				175		

Ref	s106 ref number	Development Location/ Developer	Ward of proposed scheme	Amount	Scheme Name	Neighbourhood board comments / suggestions
IM L06	CitC1-01b	City Contracting, Station Road	Spondon	45	Nottingham Road/Willowcroft Road -traffic signal refurbishment	None received
Total				45		

Appendix 2C: 2016/17 Highways and Transport Neighbourhood Priorities

Ward	Priority	Included in 16/17 work programme?	Strategy Area
Abbey			
Priority 1	Radcliffe Drive/Rowditch Place/Burton Road Measures to address parking, access and traffic management concerns	yes	Local Traffic Management
Priority 2	Boyer Street Stockbrook Street, Fairfield Road, Haddon Street Carriageway and footway maintenance	yes	Highways Maintenance
Allestree			
Priority 1	Maxwell Avenue and Kedleston Slip Road Measures to address concerns of parking by non-residents	yes	Local Traffic Management
Priority 2	Carsington Crescent Carriageway maintenance	yes	Highways Maintenance
Alvaston			
Priority 1	Raynesway Measures to address traffic management concerns	yes	Local Traffic Management
Priority 2	Alvaston Junior School Measures to address school parking concerns	yes	Local Traffic Management
Arboretum			
Priority 1	Castings Road, Shaftesbury Estate, Harrington Street and Pear Tree Crescent Measures to address traffic management concerns	yes	Local Traffic Management
Priority 2	Various Locations Footway and carriageway maintenance	yes	Highways Maintenance
Blagreaves			
Priority 1	Eliot Road Measures to address parking and access concerns	yes	Local Traffic Management
Priority 2	Southcroft Footway Maintenance	yes	Highways Maintenance
Boulton			
Priority 1	Lord Street Surface dressing	yes	Highways Maintenance
Priority 2	Rochester Close Surface dressing	yes	Highways Maintenance

Classification: OFFICIAL

Chaddesden			
Priority 1	Discussions are still underway; priorities selected by Chaddesden Neighbourhood Board will be added to the programme.		
Priority 2			
Chellaston			
Priority 1	Sinfin Avenue Footway maintenance	yes	Highways Maintenance
Priority 2	Maple Drive and Parkway Measures to address school run generated parking and traffic management concerns	yes	Local Traffic Management
Darley			
Priority 1	Belper Road Traffic Calming Measures	yes	Local Traffic Management
Priority 2	Various Locations Footway slurry sealing	yes	Highways Maintenance
Derwent			
Priority 1	St Mark's Road Area Measures to address traffic management concerns	yes	Local Traffic Management
Priority 2	Various locations Footway slurry sealing	yes	Highways Maintenance
Littleover			
Priority 1	Hillsway/The Hollow Implementation of outcomes of 2015/16 investigation	yes	Local Traffic Management
Priority 2	Littleover Sustainable Journeys Measures to encourage cycling in various locations but with a focus on Heatherton	yes	Smarter Choices
Mackworth			
Priority 1	Stepping Lane/Slack Lane Junction protection	yes	Local Traffic Management
Priority 2	Humbleton Drive Carriageway Maintenance	yes	Highways Maintenance
Mickleover			
Priority 1	Various Streets in Mickleover Measures to address traffic management and congestion concerns	yes	Local Traffic Management
Priority 2	Mickleover Dropped Crossings Dropped crossings at a number of locations within Mickleover	yes	Local Traffic Management
Normanton			

Classification: OFFICIAL

Priority 1	Various Locations Carriageway and footway maintenance	yes	Highways Maintenance
Priority 2	Dale Road Measures to address traffic management concerns	yes	Local Traffic Management

Oakwood			
Priority 1	Morley Road Bus Stops Measures to improve existing bus stops	yes	Local Traffic Management
Priority 2	Shirley Road, Vestry Road and Saffron Drive Footway slurry sealing	yes	Highways Maintenance
Sinfin			
Priority 1	Grampian Way Measures to address safety concerns	yes	Local Traffic Management
Priority 2	Buchan Street Area Footway slurry sealing	yes	Highways Maintenance
Spondon			
Priority 1	Dale Road Carriageway resurfacing	yes	Highways Maintenance

Classification: OFFICIAL

Appendix 3

2016/17 Streetpride Plant & Equipment Work Programme

Work Area	2016/17 Budget (000's)
Grounds Plant & Equipment The purchase of plant and equipment to undertake grounds maintenance activities including grass cutting	609
Refuse Vehicles & Plant The purchase of refuse vehicles and equipment to undertake household and trade waste management activities	50
Street Cleaning Equipment The purchase of equipment to undertake street cleaning activities including footway and carriageway sweepers, hand sweeping & litter picking and chewing gum removal	635
Waste Disposal – New Treatment Plant Derby's contribution to the build costs of the new waste plant on Sinfen Lane.	25000
Total	26294

Appendix 4

2016/17 Flood Defence & Land Drainage Work Programme

Scheme	2016/17 Budget (000's)
Cotton Brook Flood Alleviation Scheme	120
Northern Flood Relief Culvert Ladder Replacement	15
Markeaton Lane Flood Alleviation Scheme Phase 1 & 2	86
Staker Lane Flood Alleviation Scheme	14
Deepdale Lane Culvert Replacement	15
Total	250



INFRASTRUCTURE PROGRAMME BOARD

March 2014

INFRASTRUCTURE PROGRAMME BOARD TERMS OF REFERENCE

SCOPE AND PURPOSE OF THE INFRASTRUCTURE PROGRAMME BOARD

The **scope** of the Infrastructure Programme Board includes:

All **Capital funded** infrastructure related schemes, projects, initiatives and supporting policies including all capital schemes approved in the Capital Programme under Infrastructure Programme Board covering the following Capital Programme areas:

- Highways and Transport
- Land Drainage & Flood Defence
- Streetpride Plant & Equipment

Including, but not exclusive to

- Highways and Transport Maintenance Programme
- Highways and Transport Integrated Transport Programme
- Local Flood Alleviation programme and work related to the Flood and Water Management Act 2010 (referred to as Flood Defences)
- Replacement of grounds maintenance plant and equipment
- Replacement of Refuse Vehicles
- Replacement of street cleaning equipment
- Purchase of recycling bins
- Major transport schemes, e.g. London Road Bridge Major Scheme
- CCTV Programme

Scope also extends to all external **grant funded** schemes and programmes falling under the specified remit of the Board, including:

- LSTF Programme
- Cycle grant funded schemes or programmes
- Highways Maintenance
- Road Safety
- Air Quality

Scope also covers **revenue funded programmes** and **other funded** programmes including:

- Transport and Highways specific developer contributions and commuted sums
- Highways maintenance revenue programme
- Other transport revenue projects
- Neighbourhood devolved budget programme - this is not limited to highways and transport schemes (budgets and spend is managed via Neighbourhood Boards however the Board would have an overview of delivery and resourcing of the programme and coordination of the work alongside the other Infrastructure programmes)

The Board will not deal directly with, or monitor, schemes and initiatives of other related programmes, but will consider the impacts of its decisions and progress of these projects particularly:

- Street Lighting PFI
- The City Centre Regeneration Framework
- The Core Strategy

- Public Realm programme

The **purpose** and remit of the Board is to:

- have a general overview of the delivery of the Cabinet approved Infrastructure and related work programmes,
- keep under review scheme progress delivery in relation to timescale and funding,
- approve proposals for changes to the work programme including recommendations to move spending around depending on priorities and funding pressures on specific schemes in line with delegated approval level and financial procedure rules
- refer decisions beyond delegated approval for Cabinet approval
- ensure all schemes within the programme are managed in line with the Financial procedure rules, procurement rules and agreed project and programme management processes relevant to each programme area
- ensure the appropriate recording and reporting of decisions taken
- take action to ensure programme delivery and future programme development is achieved,
- provide strategic direction and coordination (including coordination of resources) across the Streetpride and Planning and Facilities Management departments to identify and where possible resolve emerging issues
- recommend future works programmes for Cabinet approval

MEMBERSHIP OF INFRASTRUCTURE BOARD

Membership

Core Members

- Director of Planning and Property Services (chair)
- Director of Partnerships and Streetpride (chair)
- Head of Highways, Engineering, Grounds and Streets
- Head of Traffic and Transportation
- Head of Finance, Neighbourhoods and CEO
- Head of Planning
- Transport Planning Group Manager
- Programming and Policy Team Leader (Programme Manager)

Others as required

- Streetpride Heads of Service
- Flood Defence Team Leader
- Strategy or Project managers
-

ROLES & RESPONSIBILITIES OF BOARD MEMBERS

The **Senior Responsible Officers** (Director of Planning and Property Services (chair) and Director of Partnerships and Streetpride (chair)) responsibility is to make programme decisions in line with delegated authority and in consultation with Cabinet Members or refer recommendations to Cabinet for approval beyond delegated limits, ensuring

- ownership of the programme (Capital and Revenue) and the Programme Board Terms of Reference including the roles and responsibilities of the Board Members
- the effective delivery of the Infrastructure Board Work Programmes
- provide strategic direction and mandates for problem resolution and referral of issues highlighted
- recommending future years Highways and Transport work programmes that meet our long term transport strategy for Cabinet approval

The **Chairpersons** responsibilities include:

- guiding the meeting according to the agenda and time available;
- ensuring all discussion items end with a decision, action or definite outcome;
- reviewing and approving the draft minutes before distribution;

The **Programme Manager** responsibilities include:

Ensuring the facilitation of the Board and its technical sub groups to provide an overview of the programme delivery and future years work programme development including:

- present recommendations on programme management to the board for approval or referral to Cabinet;
- make recommendations as to future programme development including the preparation of future years cabinet reports;
- ensure timely and accurate progress updates to the Board, concentrating on exception reporting where progress is not on track;
- scheduling meetings and inviting specialists to attend meetings when required;
- preparing agendas and ensuring all necessary documents are attached to the agenda and circulated to Board members one week prior to meeting;
- take notes of proceedings and prepare and distribute minutes of meeting to all members and appropriate staff (one week) after the meeting;
- appropriate reporting of decisions.

The **Heads of Service** responsibilities:

Each Head of Services primary responsibility within the remit of the Board is in line with their individual divisional responsibilities including:

- attending Board as and when required to present papers relevant to their areas of responsibility and to provide direction and steer to the Programme Managers and Strategy managers as required;
- taking action within areas of divisional responsibility to remove barriers to effective programme delivery;
- ensuring all resource issues are highlighted and addressed to meet stated commitments;
- in the case of **Head of Service for finance**, advising on financial implications of recommendations and decisions to support effective delivery of the programme.
-

CABINET MEMBER PORTFOLIO HOLDERS AREAS OF RESPONSIBILITY

The following confirms Cabinet Portfolio Holders areas of responsibility regarding direction and decisions on the Infrastructure Board Programme Areas / Projects:

Cabinet Member for Neighbourhoods and Streetpride

- Land Drainage and Flood Defence programme
- Streetpride Plant and Equipment
- Highways & Transport programme (operational/delivery elements – see appendix A for detail)
- Consultation and programming of Highways and Transport s106 contributions

Cabinet Member for Planning, Environment and Public Protection

- Highways & Transport programme (strategic/policy elements- see appendix A for detail)
- Planning and negotiation of Highways and Transport s106 contributions
- Strategy and Policy development:
 - Local Transport Plan
 - Active Travel strategy
- Smarter Choices including LSTF:
 - Marketing & Communication projects
 - Connected Branding
 - Behavioural Change initiatives

DELEGATED AUTHORITY - FINANCIAL LIMITS

Financial Approval Limits

In line with the Council's Financial Procedure Rules, the **Strategic Director** can approve up to 10% or £50k variation (whichever is greater) within a Programme Area. **The Strategic Director has delegated 100% of this authority to the Director of Planning and Property Services and/or Director of Partnerships and Streetpride.** This approval will normally be made via the Programme Board however in exceptional circumstances, can be made by the relevant Directors outside of Board meetings.

The **Programme Board with the approval of the Cabinet portfolio holder** can approve budget variation between £50k - £250k as long as it can be contained within the Programme Area. This approval will normally be via Cabinet Member Briefings between Director of Planning and Property Services or Director of Partnerships and Streetpride and Cabinet Member Portfolio Holders.

In the Highways and Transport Work Programme approved by Cabinet on 12 February 2014, delegated approval was granted for the Board, in consultation with the Cabinet Member Portfolio Holder to introduce new schemes or bring forward the implementation of some schemes at the expense of others.

Any change of £250k or greater requires **Cabinet approval**

Financial Approval Limits for Strategy Managers:

The Board have approved further delegation to Strategy Managers that provided that the changes are contained within a single strategy allocation and do not result in the removal or addition of a scheme to the strategy area, the financial limits are:

- A minor change in scheme design or proposal of an alternative solution to better achieve the desired outcome resulting in no change in cost (as long as this is in line with grant conditions and s106 Heads of terms where relevant)
- A change to an individual scheme cost of up to £20k for schemes costing less than £100,000;

Strategy Areas are defined in diagram A

Regardless of value, all scheme cost changes within a strategy area will be reported to Programme Board and will be recorded appropriately, identifying the details and reasons for the scheme variation, and will be managed in consultation with the respective technical, legal and finance officers. Close monitoring of schemes during the financial year will endeavour to bring forward any scheme variations to the Board and Cabinet as soon as possible during the detailed design process.

FREQUENCY AND DURATION OF MEETINGS

The Board will meet monthly.

Any programme issues requiring decisions to be taken by exception, outside of these meetings will be coordinated by the Programme Manager and taken to Director of Planning and Property Services and/or Director of Partnerships and Streetpride.

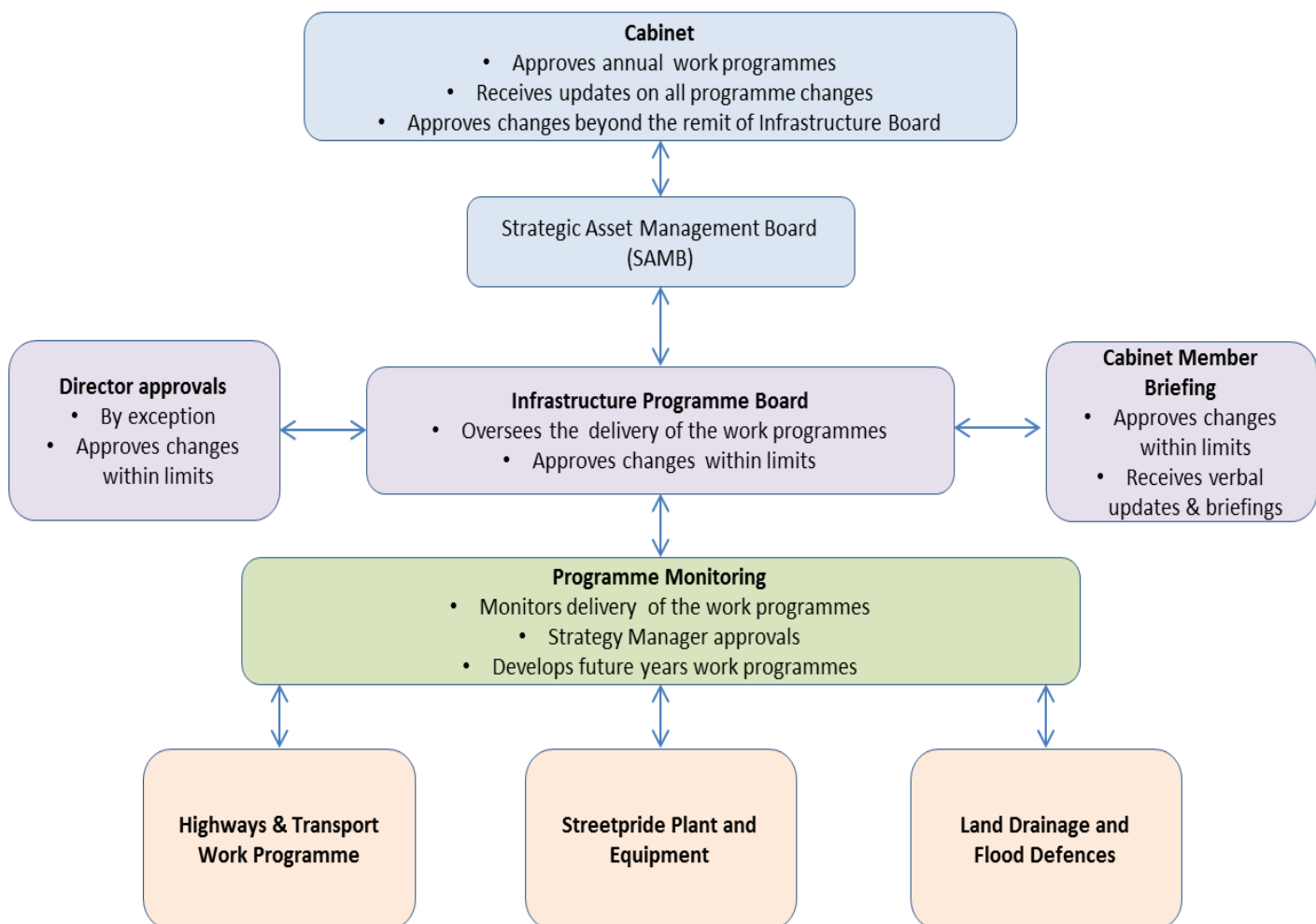
REPORTING

All decisions taken within delegated authority (by Strategy Managers, at Board or Cabinet Member briefings) must be appropriately reported through Financial Matters. Information proposed to be included in the Cabinet financial matters report is agreed between the Programme manager and the finance lead.

PROGRAMME MANAGEMENT PROCESSES

The Programme Governance Structure and programme management arrangements is summarised in Diagram A:

Diagram A: Infrastructure Programme Governance



Programme Delivery and Development is supported by regular meetings, primarily of the programme managers, strategy managers with support from finance and programme advisors from engineering and Sustainable Transport Group through the Programme Monitoring Team meetings.

A number of separate Project Boards exist for significant projects. Regular verbal updates from individual project boards will go to Board and to Cabinet Member briefings.

Cabinet Member Portfolio Responsibilities

Proposed Cabinet portfolio responsibilities for Infrastructure Board Programmes

Cabinet Member for Neighbourhoods and Streetpride

- Flood Defences programme Area
- Streetpride equipment programme Area
- The following elements of the Highways and Transport Programme Area (with exception of strategy and policy development in each strategy area)
 - Highway Maintenance Strategy Area
 - Highway Structures
 - Network Management – Intelligent Transport Systems Maintenance
 - Strategic Network Management
 - Local Traffic Management
 - Casualty Reduction
 - Cycle Derby
 - Including LSTF programme delivery as agreed
 - Pedestrian Accessibility
 - Including LSTF programme delivery as agreed
 - Public Transport
 - Including Better Buses Programme and LSTF delivery as agreed
 - Major scheme delivery (eg. London Road Rail Bridge)
 - CCTV delivery
- Consultation and use / programming of Highways and transport s106 budgets

Cabinet Member for Planning, Environment and Public Protection

- The following elements of the Highways and Transport Programme Area
 - Land Use Policies and Strategic Transport Schemes incl.
 - Strategic Transport Scheme Development
 - Transport input into Input into Core Strategy & LDF
 - Transport input into Growth Point/HMA Work
 - Planning Applications & Transport Assessments

- Strategic Modelling
- Planning and negotiation of Highways and transport s106 budgets
- Strategy and Policy development eg.
 - Local Transport Plan
 - Active Travel strategy
- Smarter Choices including LSTF
 - Marketing & Communication projects
 - Connected Branding
 - Behavioural Change initiatives