



## **migrant communities and social enterprise in a local context**

**Ilona Navickiene, 28 January 2010**

# migrant communities and social enterprise in a local context

## Structure of the presentation:

- Why people migrate and why we are all here
- What is special about social enterprise
- What is the situation in Derby
- How new communities can make a positive contribution implementing Vision 2020
- New World Starts in New Communities



**Ilona Navickiene, 28 January 2010**

## •Why people migrate and why we are all here

African countries are much worse now than in 1960.

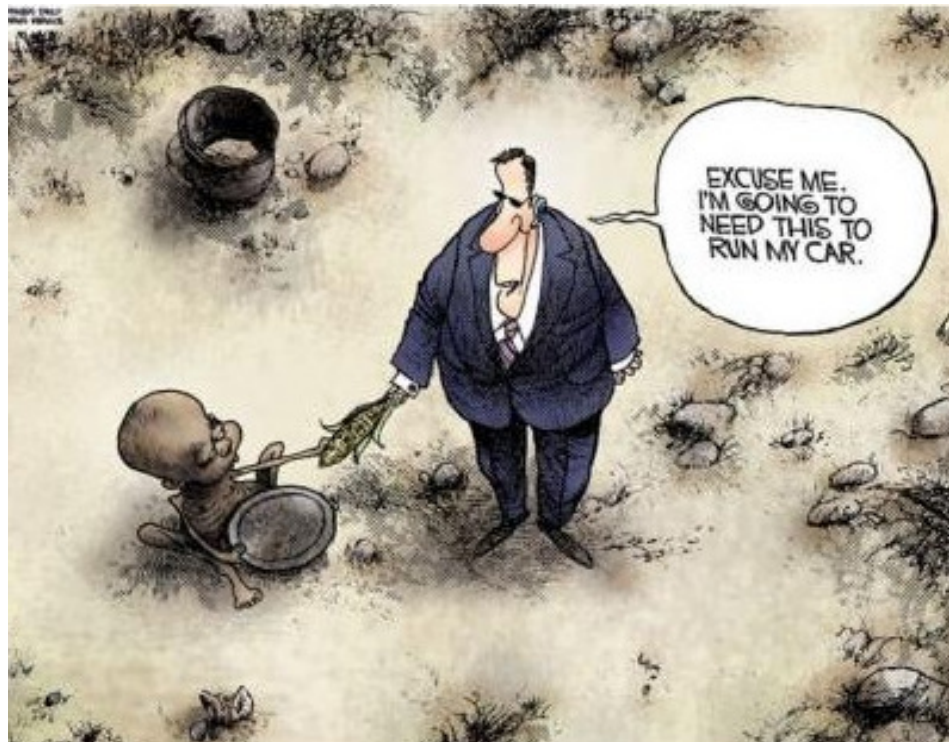
The situation rapidly deteriorates in the countries of Eastern Europe where IMF forces governments to make drastic cuts in the public sector.

Countries of the Middle East suffer from continuous wars that produce mass poverty and destitution.





## Market economy has failed to deliver promised progress



Social wellbeing for all has never been the main goal of a Market Economy.

Market takes the best and leaves the rest

Obsession with economic development ignores the essence of what it is to be human

50% of the labour force in is already excluded from the global labour market and 30% are insecure.

The rich get richer, the poor get poorer

**Market economy has delivered immoral development: luxury lifestyle of some destroys the lives of millions**



"We cannot solve our problems with the same thinking we used when we created them"  
/A.Einstein/



## •What is special about social enterprise

Social enterprise is something that gives freedom for people to be creative and to do things in different ways. Not – 'one size fits all'.

It is where people collectively create a meaning for themselves and their community. They are not alienated from their way of life.

It is not about choosing the best and leaving the rest. It is about helping those who struggle.

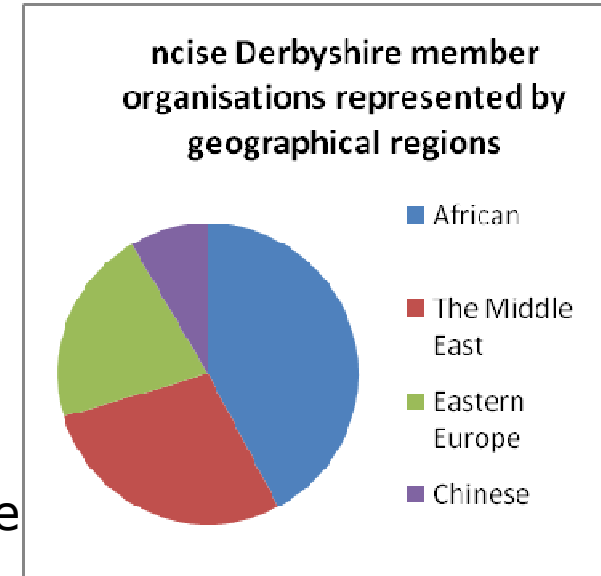
It is not about personal gain, it is about gain for the community, caring about socially excluded, caring about environment and the world.

It is not about turning people into slaves but finding value in each person and reinforcing social innovation



## • ncise Derbyshire member organisations

- ▣ Derbyshire Bondeko Congolese Association
- ▣ African Family Support Group
- ▣ Iraqi Community Association
- ▣ African Family Support Group
- ▣ Eastern European Migrants Advice Committee
- ▣ Derby Congo Support group
- ▣ Derby Bosnia-Herzegovina Community Association
- ▣ Persian Cultural Association
- ▣ Arabesques – the Arabic Women Group
- ▣ Derby African Association
- ▣ Derby Afghani Community Association
- ▣ Derbyshire Chinese Welfare Association
- ▣ Voice of Congolese Women
- ▣ UMOJA – Women's Group
- ▣ Zimbabwe Women's Project



## What is the situation in Derby

- Number of member organisations decreased from 34 to 15
- Some organisations are doing well and some are experiencing a deep crisis.
- ncise Derbyshire itself as organisation is at initial stage of development and suffers from the lack of credibility and visibility
- new communities potential ideas, talents, skills, knowledge, experience remain isolated within their own circle; only fragmented projects emerge from time to time to demonstrate their presence in the city but there is no sense of belonging and exclusion mood prevails;
- new communities population is young, willing to take risks, have passion to help and seeking for a better life. There is great potential to facilitate social enterprise and gain economic benefits of diversity





## How new communities can make a positive contribution implementing Vision 2020

### **making unity in diversity work**

a professional culturally diverse self sustainable SE network that serves as a model for community cohesion, demonstrates an ability to reach the marginalised communities and unlock their potential

#### **Core values**

**Kindness** (facilitates respect and understanding)

**Creativity** (stands for diversity, entrepreneurship and innovation)

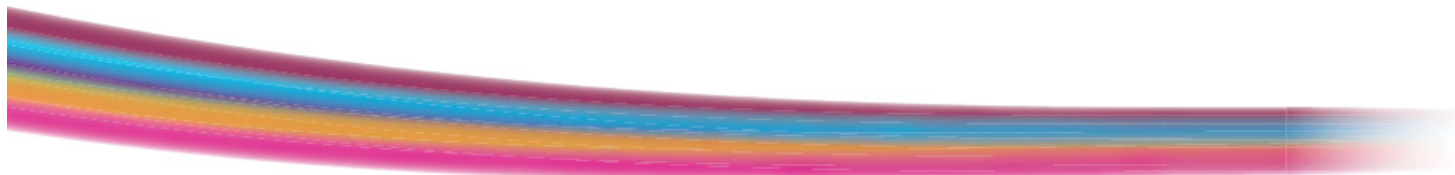
**Contribution** (embraces participation, inclusiveness and self-esteem)

**Passion** (represents high motivation)

**Accountability** (we do what we say)



Derby will  
have strong  
communities,  
where there  
is respect  
and positive  
relationships.



## New World Starts in New Communities

**Main aim:** create a successful model of ethnic minority groups integration, bring out migrant communities out of isolation and demonstrate benefits of diversity

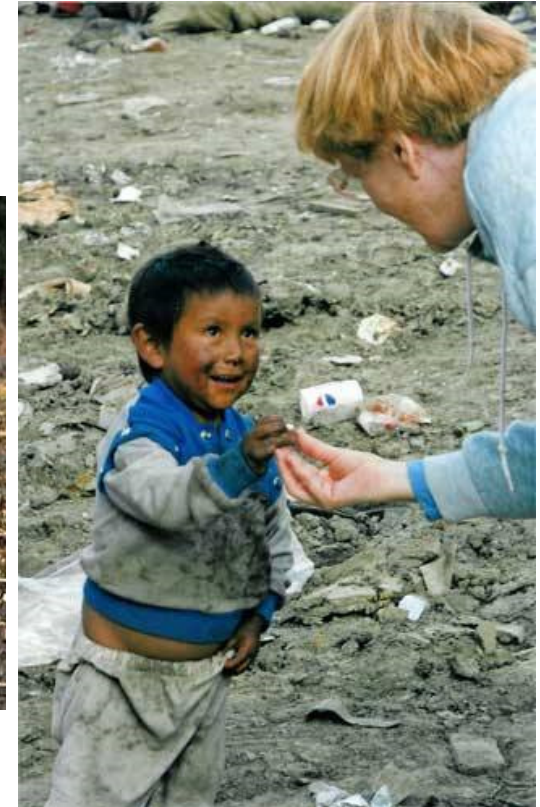
### Objectives:

- Establish a commercial ncise Derbyshire arm that will allow the organisation to diversify sources of income and integrate innovative concept of development
- Provide a platform for ethnic minority groups to realise their potential, give an opportunity to contribute to the city development, create sense of pride and belonging



## New World Starts in New Communities

**Why I think this idea has a great potential?**



More and more people cannot tolerate immoral development. They care about the world, the poor and the environment. They look for different opportunities to create a New World and build new relationships between people of different nations.



## New World Starts in New Communities: business idea

### How much risk it involves?



It is risky as diversity facilitates potential conflict

It is like walking on broken glass: once you gained confidence to do the first step and do not bleed, you will make the second one as it gets exciting

## Plans for the future

At the moment we are fragmented,  
scattered pieces of a puzzle....



## Plans for the future



.....and we have to put them together into a one big picture.

the Big Idea consists of many small actions and decisions undertaken by members of the team.

**Ilona Navickiene, 28 January 2010**