

## Performance Eye information relating to Recycling

At its meeting on 20 January 2005 members agreed that the Commission should use Performance Eye to track the impact on recycling of the additional funding proposed in the Revenue Budget to roll out the Rethink Rubbish programme.

If the Commission is to do this it will now need to identify appropriate Performance Eye indicators and to be satisfied that those indicators are presenting representative information.

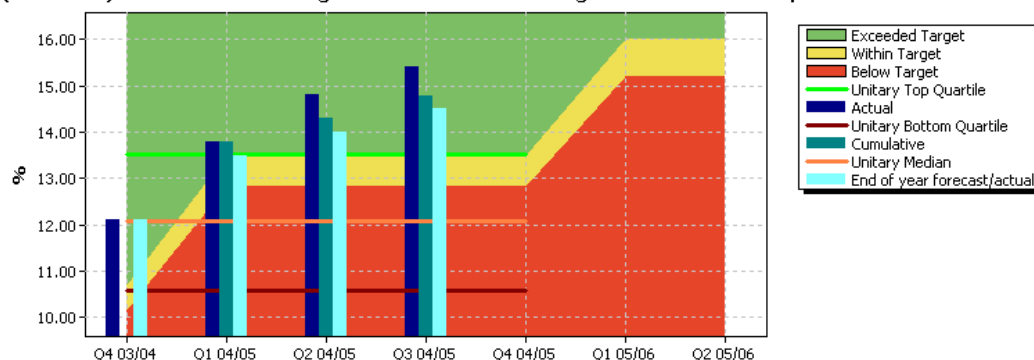
There are currently 9 Planning and Environment Commission sub elements that relate to recycling. These are shown as figures 1-9 below.

It is proposed that at its meeting on 3 March the Commission examine these indicators and either selects those which are suitable for its purpose, or requests that additional or modified indicators be provided.

Neil Haslam the Waste Management Officer (Strategy) will attend the meeting on 3 March and will provide background information on the indicators.

**Figure 1**

2a (LPSA12.23) - % of the total tonnage of household waste arisings which have been recycled



**Figure 2**

LPSA10.1 - % of the total tonnage of household waste arisings which have been recycled

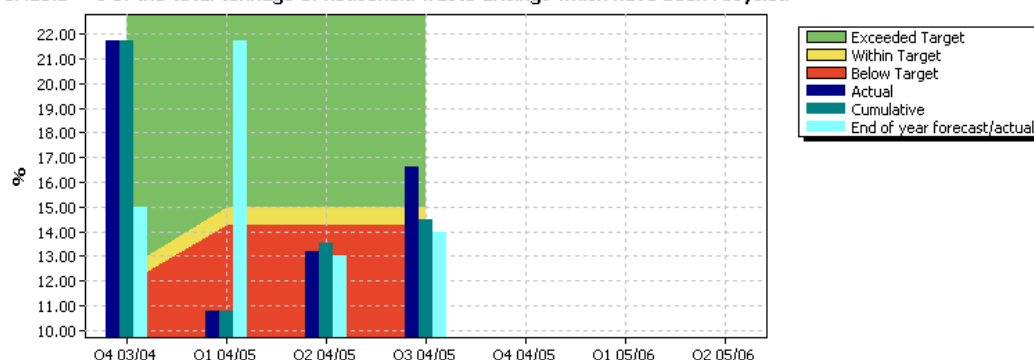


Figure 3

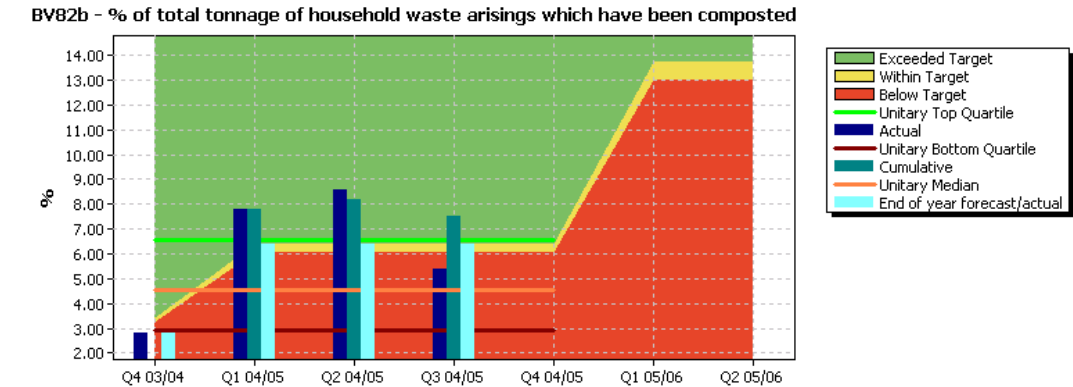


Figure 4

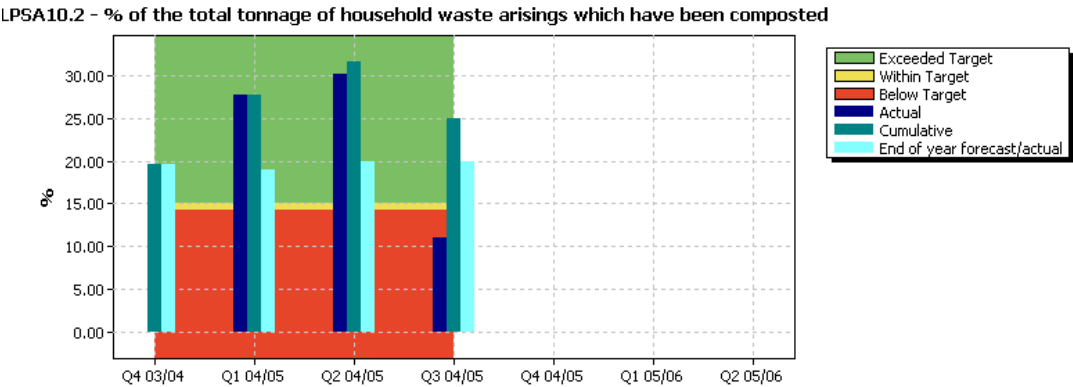


Figure 5

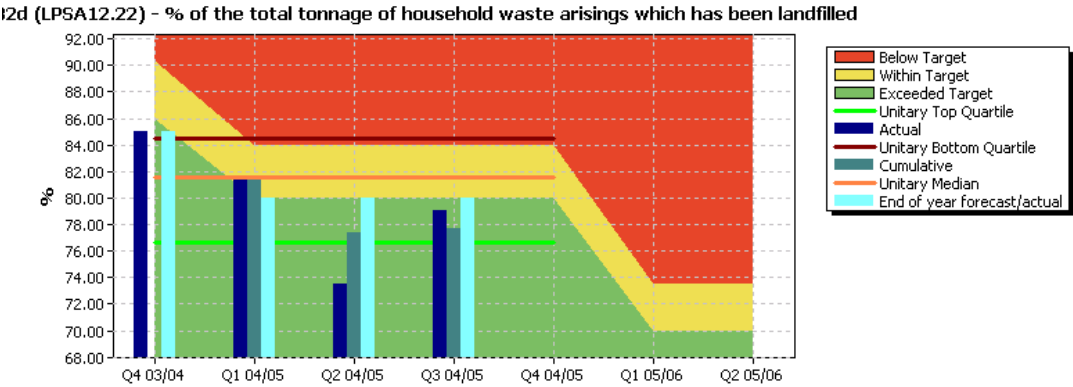


Figure 6

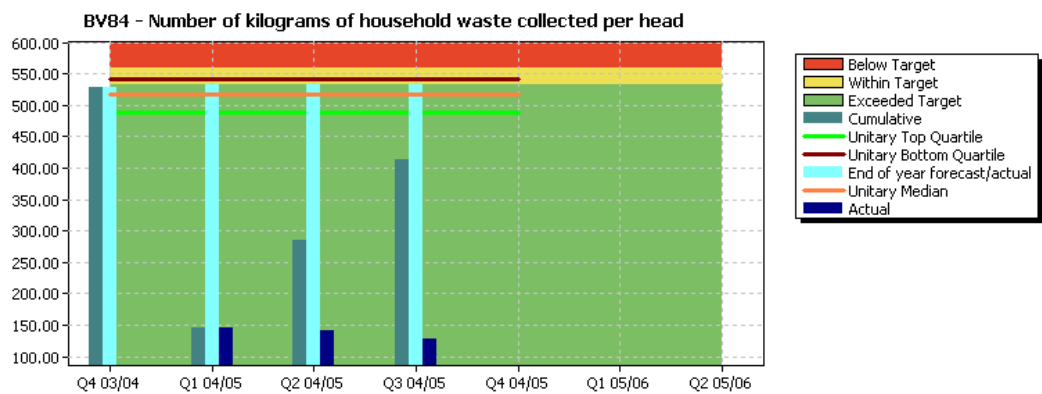


Figure 7

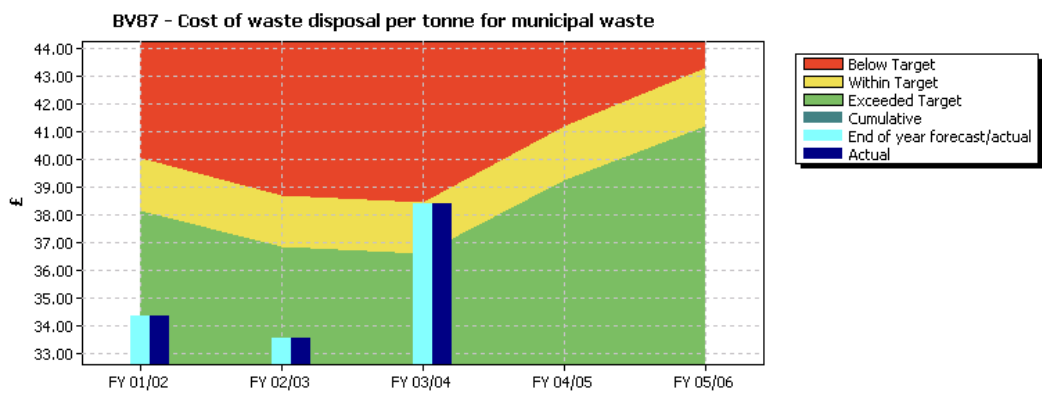
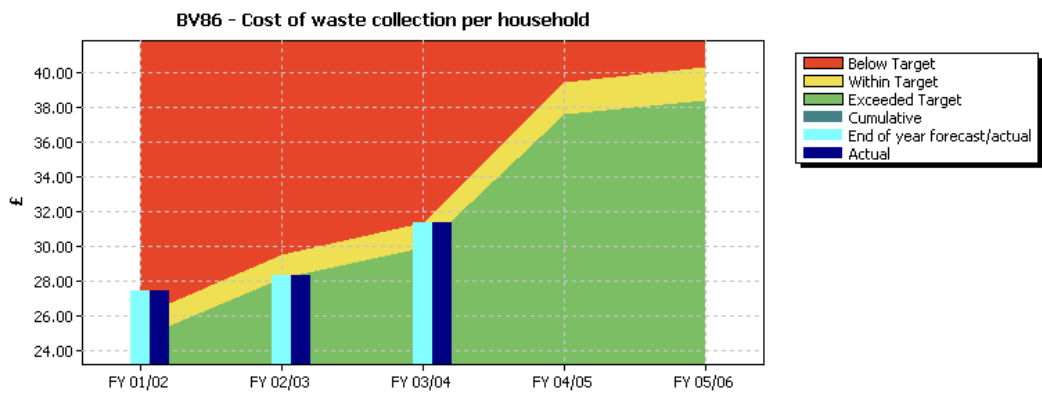
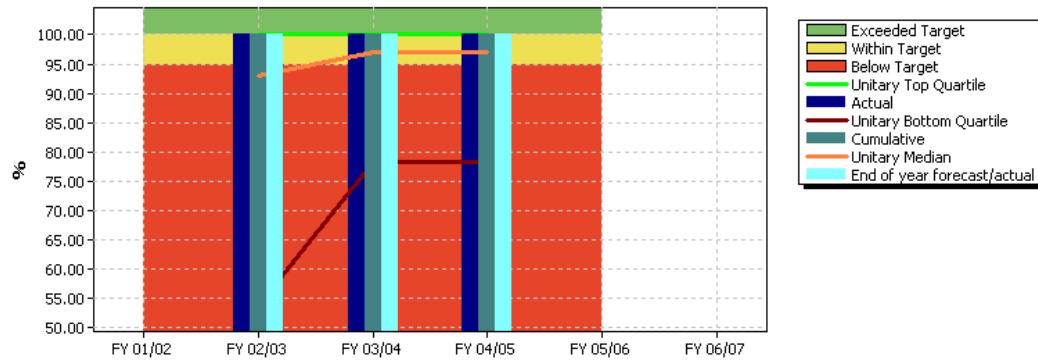


Figure 8



**Figure 9**

BV91 - % of population resident in the authority's area served by a collection of recyclables



I will e-mail a copy of this note to all Commission members so that you can print it off in colour.

DRR 23 February 2005