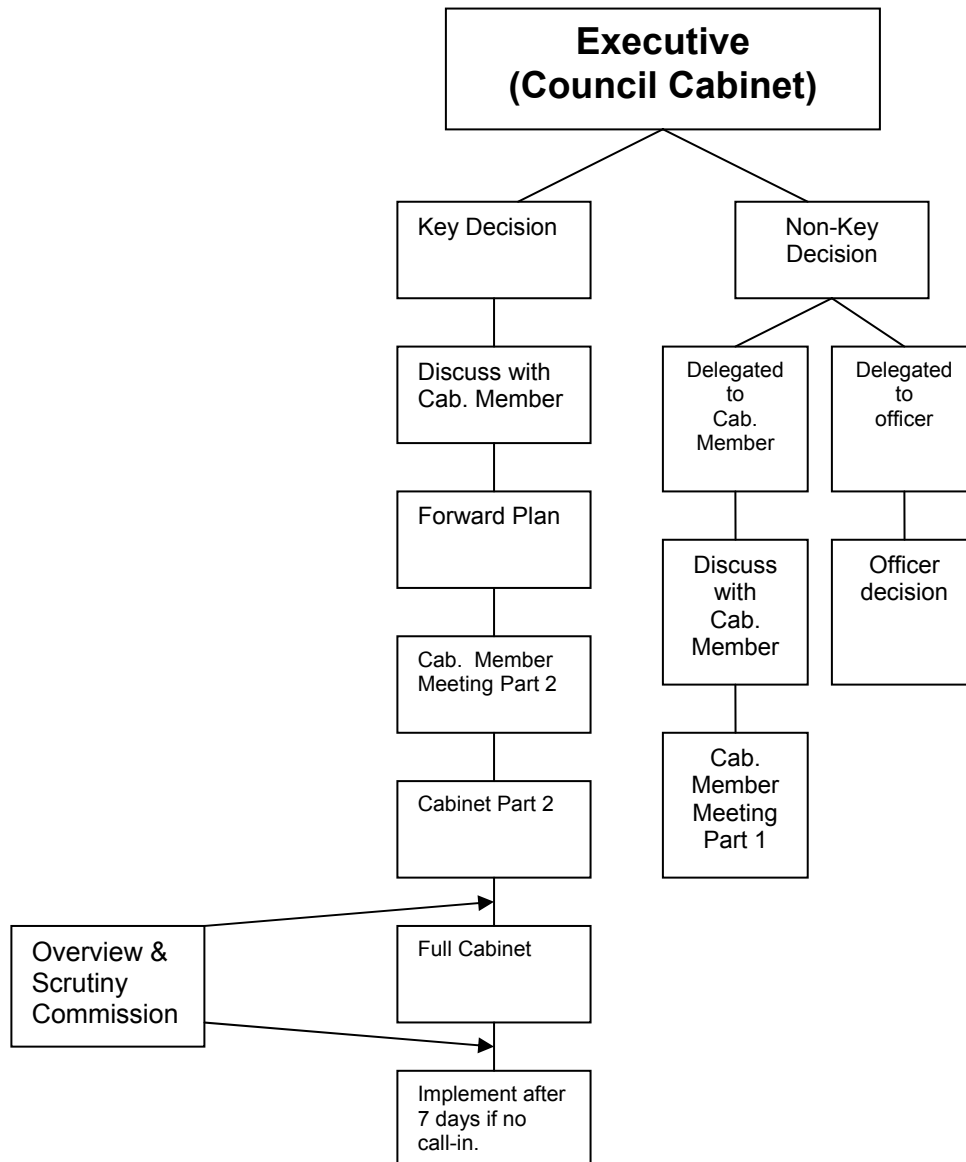


Executive Decision Making Process



Key decisions are those that affect 2 or more wards or involve more than £250,000. A matter will be considered by the Chief Officer Group where it has corporate implications or it is about how a Cabinet decision or Council policy is implemented.

Overview and scrutiny commissions carry out policy reviews and scrutinise decisions by the Cabinet, regulatory committees or outside organisations. They have no power to change decisions but can ask the decision-taker to review a decision. An overview and scrutiny commission may request information on Forward Plan items, call-in a Cabinet key decision or conduct a retrospective scrutiny exercise.

Decisions about planning and licensing are non-executive and are taken through the Planning and Licensing Control Committees.