

Gender and sexuality diversity forum

Sexual health and teenage pregnancy

Sheila McFarlane
Commissioner for teenage pregnancy
sheila.mcfarlane@derby.gov.uk

Bernie Brown
Sexual Health Improvement & Development Manager
NHS Derby City and on behalf of NHS Derbyshire County
bernadette.brown@derbycitypct.nhs.uk

Policy context

Previously

Teenage Pregnancy

- Reduction of unplanned under 18 conceptions and improved support for teenage parents and their children

Sexual health and HIV

- Reduce the transmission, prevalence, stigma of HIV and STIs. Improve health and social care for people with HIV

The Future ...

Early intervention, child poverty, improve public health, reduce health inequalities, GP commissioning

The rise in sexually transmitted infections in U.K 2000-2009

	Syphilis	Gonorrhoea	Chlamydia	Herpes	Warts
2000	827	21,292	67,173	17,590	70,414
2009	2,911	17,001	114,686	30,126	91,257

Source: Health Protection Agency

Two thirds of new STI diagnoses were in women under 25. (2009)

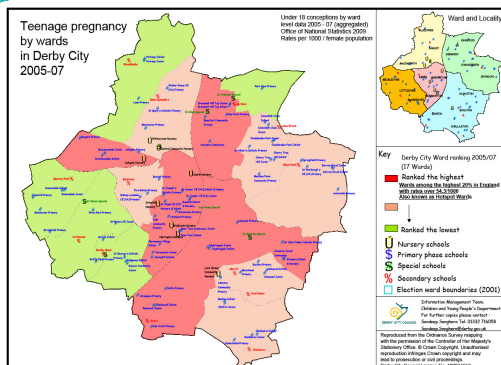
In men in the East Midlands, over half of new STI diagnoses were in under 25s (2008)

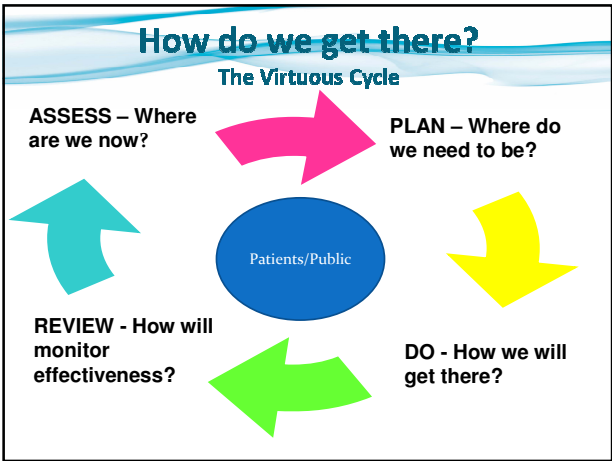
- Peak age for an STI in women is 19 -20 years, men 20 - 23 years.
- Of all the 15-24 year olds diagnosed with an STI one in ten will become re-infected within a year.

The graph displays the under 16s population per capita for three regions over a 13-year period. Derby UA (red line) starts at approximately 48 in 1997, peaks at 63 in 1998, and then generally declines to 28 by 2010. England (dark blue line) and East Midlands (light blue line) show much more stable trends, both starting around 45 in 1997 and ending around 40 in 2010, with minor fluctuations throughout the period.

Year	England	East Midlands	Derby UA
1997	45	45	48
1998	47	46	63
1999	46	45	55
2000	45	44	50
2001	44	43	48
2002	45	42	52
2003	44	42	54
2004	44	42	55
2005	43	41	54
2006	42	40	48
2007	43	41	55
2008	41	40	42
2009	41	40	35
2010	40	40	28

Progress to DfE statistical neighbours





Local needs

Derby City Population (13-24 years) = 41,910*

20,609	female
21,301	male
2,514	teenage population LGBT (approx) **

It is estimated that on average between 5-7% of the population are considered to be LGBT

* ONS 2011 LA single age bands ** Department of Trade and Industry

Assess

- Evidence based
- Derby Sexual Health Needs Assessment 2008, 2010
- Inequalities

* ONS 2011 LA single age bands ** Department of Trade and Industry

Plan

- Prioritising developments
- Partnership and multi-agency working
- Equality Impact Assessments
- Stakeholder and service user consultation
- Capacity and demand
- Shaping the structure of supply



Do

- Service user engagement
- Designing services
- Development of services with clear aims and outcomes and performance framework to ensure based on population need



Review

- Regular service reviews
- Performance monitoring frameworks for all commissioned services (and managing performance)
- Evaluation of service user experience
- Continual service improvement plans



Commissioned provision by PCT/LA

- Contraception and Sexual Health Services – including outreach provision in colleges and the community
- Boys and Young Men's Service
- Derbyshire Friend
- Derbyshire Positive
- Young people specific sexual health clinics
- Enhanced sexual health service – Derby University
- PSHE Curriculum support – Relationship, Sex & Education (RSE) Key stage 3, 4, 16+, (being refreshed foundation Key stage 1, 2)
- Delay training
- Derby City Sexual Health Guide
- Increasing access to LARC
- Condom distribution Scheme
- GUM Clinics

Outcomes for young people

- Young people are more confident in
 - forming healthy relationships, including sexual relationships
 - making informed decisions
 - asking questions
 - delaying early sexual activity till they are ready
- Young people know where they can get help
- Improved communication between young people and parents and carers
- Young people have easier access to relationship and sexual health advice and services
- Reduction in unplanned pregnancy/STIs
- Young people are safe

Challenges

- Increasing skills, confidence and knowledge e.g. asking the right questions (frontline staff)
- Identifying and addressing unmet needs
- Working within financial restraints
- Diverse and changing population
- Current structural changes within services



Any Questions?
