

## **Children in Care Statistical Report and Key Indicator Performance Out Turn**

### **RECOMMENDATION**

- 1.1 Commission is asked to consider the report and note the overall positive progress that has been made.
- 1.2 Commission is asked to note the specific areas for further attention during 2009 – 2010 and to receive a progress report at the next meeting.

### **SUPPORTING INFORMATION**

- 2.1 All Local Authorities are required to submit key data regarding the outcomes for Children in Care annually to the DCSF. This return is known as the OC2 return. Attached to this report as Appendix two are two local reports that show Derby's performance against these indicators both over time and against our family comparator group of authorities. The activity periods covered are September 2003 – September 2008 and September 2007 – September 2008.
- 2.2 **Main findings for Derby compared to comparative authorities and national results:**
  - The percentage of looked after children covered by a statement of special education needs in Derby was 24.5% in 2008, this is in line with the national average of 28% and the comparator authority average of 29%.
  - The percentage of looked after children missing at least 25 days from school in Derby is now at its lowest point – 9.3% in 2008. The comparator authority average was 13% and national average was 12%.
  - Key Stage One results for looked after children - Reading, Writing and Maths. Derby is below the England and comparator average for Reading, Writing and Maths.
  - Key Stage Two results for looked after children – Derby are now performing higher at Science (69%) than the national average (60%), the Maths figure (44%) is inline with the national average (44%) however Derby is performing lower in English (31%) than the national average (46%).
  - Key Stage Three results for looked after children - English, Math's and Science. Derby did not perform well this year and is below the national and comparator averages for all three subjects.

- GCSE results – Derby's looked after children performed above the national averages with 69% of looked after children achieving 1 GCSE A\*-G, 54% achieving 5 GCSEs A\*-G and 12% achieving 5 GCSEs A\*-C.
- The percentage of children looked after aged 10 or over cautioned or convicted of a criminal offence was 8% in 2008; this is below the national average of 9% and the comparator average of 10%.
- The percentage of children looked after receiving health assessments, dental checks and immunisations is generally in line with national and comparator averages.
- The percentage of children looked after with a substance misuse issue was 3.7% in 2008, this compares to 4.9% nationally and 6.2% for the comparator authorities.
- Destinations for looked after school leavers were good in 2008 with 69% entering full time education which is inline with the national average.
- In Derby, 8% of looked after school leavers were unemployed compared to 16% nationally and 22% for the comparator authorities.

2.3 Also attached to this report as appendix 3 is the current profile of our Children in Care.

<b>For more information contact:</b>	<b>Keith Woodthorpe, Assistant Director, CYPD.</b>
<b>Background papers:</b>	<b>None</b>
<b>List of appendices:</b>	<b>Appendix 1 Implications</b>
	<b>Appendix 2 OC2 Outcomes and trend analysis (electronic)</b>
	<b>Appendix 3 Current profile</b>

<b>IMPLICATIONS</b>
---------------------

**Financial**

1. None arising.

**Legal**

2. The Council monitors these as outcomes as part of the duties required under the Children Act 2004.

**Personnel**

3. None arising

**Equalities impact**

4. Use of the data enables the Council to target its activities for the most vulnerable children.

**Corporate objectives and priorities for change**

5. Supporting everyone in learning and achieving.



### Current Children in care profile: Appendix 3

<b>Accommodation</b>	<b>Number of children at 2.6.06</b>	<b>Number of children at 1.8.06</b>	<b>Number of children at 1.12.06</b>	<b>Number of children at 1.05.07</b>	<b>Number of children at 1.08.07</b>	<b>Number of children at 23.11.2007</b>	<b>Number of children at 08/08/2008</b>	<b>Number of children at 20/11/2008</b>	<b>Number of children at 03/03/2009</b>	<b>Number of children at 11/06/2009</b>
Placed for Adoption	18	22	30	34	34	33	33	43	36	34
Foster Placement with Relative or Friend in LA boundary	18	18	26	32	36	29	30	27	32	29
Placement with LA Foster Carer in LA boundary	150	144	135	122	126	131	119	127	133	135
Placement with other Agency Foster Carer in LA boundary	1	1	1	4	8	6	9	7	8	11
Foster Placement with Relative or Friend outside LA boundary	11	11	6	9	8	7	9	12	12	12
Placement with LA Foster Carer outside LA boundary	68	66	62	60	67	68	67	67	68	69
Placement with other Agency Foster Carer outside LA boundary	46	50	47	43	47	56	56	51	55	53
Children's Home inside LA boundary	33	36	38	35	39	39	45	46	44	46
Children's Home outside LA boundary	6	7	6	10	7	5	5	6	6	5
Whereabouts unknown	0	0	0	0	0	0	0	0	0	0

<b>Accommodation</b>	<b>Number of children at 2.6.06</b>	<b>Number of children at 1.8.06</b>	<b>Number of children at 1.12.06</b>	<b>Number of children at 1.05.07</b>	<b>Number of children at 1.08.07</b>	<b>Number of children at 23.11.2007</b>	<b>Number of children at 08/08/2008</b>	<b>Number of children at 20/11/2008</b>	<b>Number of children at 03/03/2009</b>	<b>Number of children at 03/03/2009</b>
Placed with own parents/or other with parental responsibility	23	22	22	28	24	23	21	22	22	22
Independent Living	3	3	4	3	3	4	5	5	1	0
Residential Care Home (RHA 1984)	5	3	4	3	3	5	2	1	1	1
Residential School	5	4	4	4	3	3	3	4	3	3
Secure unit inside LA boundary	0	0	0	1	0	0	0	0	0	0
Secure unit outside LA boundary	1	2	3	2	2	3	1	2	1	1
NHS medical/nursing care	0	0	0	0	0	0	0	0	0	0
Hostels/supportive settings	1	0	0	0	0	0	0	0	0	0
YOI or prison	0	1	2	1	3	1	2	0	1	3
<b>TOTAL</b>	<b>389</b>	<b>390</b>	<b>390</b>	<b>391</b>	<b>410</b>	<b>413</b>	<b>407</b>	<b>420</b>	<b>423</b>	<b>424</b>

- **Number of approved foster carers:** 186 as at 16/06/2009

## **Profile of Children looked after as at 11/06/2009**

<b>Ethnic Origin</b>	<b>Children</b>	<b>Percentage</b>
Asian Or Asian British - Other	9	2.1 %
Asian Or Asian British - Pakistani	7	1.7 %
Black Or Black British - African	6	1.4 %
Black Or Black British - Caribbean	5	1.2 %
Dual Heritage - Other	16	3.8 %
Dual Heritage - White And Asian	15	3.5 %
Dual Heritage - White And Black African	5	1.2 %
Dual Heritage - White And Black Caribbean	20	4.7 %
Other	3	0.7 %
Other - Vietnamese	1	0.2 %
White - British	325	76.7 %
White - Irish	5	1.2 %
White - Non-European	2	0.5 %
White - Other European	5	1.2 %
<b>Total</b>	<b>424</b>	<b>100%</b>

<b>Reason Became Looked After</b>	<b>Children</b>	<b>Percentage</b>
N1 Abuse Or Neglect	333	78.5%
N2 Disability	3	0.7%
N3 Parental Illness/Disability	16	3.8%
N4 Family In Acute Stress	26	6.1%
N5 Family Dysfunction	23	5.4%
N6 Socially Unacceptable Behaviour	4	0.9%
N8 Absent Parenting	13	3.1%
N8 Unaccompanied Asylum Seeking Children	6	1.4%
<b>Total</b>	<b>424</b>	<b>100%</b>

<b>Placement Type</b>	<b>Children</b>	<b>Percentage</b>
Foster Placement	309	72.9%
Homes	52	12.3%
Independent Living	0	0.0%
Placed for adoption	34	8.0%
Placed with Parents	22	5.2%
Residential School	3	0.7%
Secure Units, YOI or Prison	4	0.9%
<b>Total</b>	<b>424</b>	<b>100%</b>

<b>Need Category</b>	<b>Children</b>	<b>Percentage</b>
Cn1 - Abuse Or Neglect	304	71.7%
Cn2 – Chronic Illness	1	0.2%
Cn2 - Emotional & Behavioural Difficulties	16	3.8%
Cn2 - Learning Disability	10	2.4%
Cn2 - Physical Disability	4	0.9%
Cn2 - Sensory Disability Hearing Impairment/Deaf	2	0.5%
Cn3 - Parental Illness/Disability	26	6.1%
Cn4 - Family In Acute Stress	18	4.2%
Cn5 - Family Dysfunction	18	4.2%
Cn6 - Socially Unacceptable Behaviour	4	0.9%
Cn8 - Absent Parenting	11	2.6%
Cn8 - Unaccompanied Asylum Seeking Children	9	2.1%
Cn9 - Cases Other Than Cin	1	0.2%
	<b>424</b>	<b>100.00 %</b>

<b>Legal Status</b>	<b>Children</b>	<b>Percentage</b>
C1 Interim Care Order	57	13.4%
C2 Full Care Order	207	48.8%
D1 Freed for Adoption (freeing order granted)	13	3.1%
E1 Placement Order Granted	71	16.7%
J3 CYPA 1969 Supervision Order with Residence Required	1	0.2%
V2 Accommodated under Section 20 (single period of accommodation)	75	17.7%
<b>Total</b>	<b>424</b>	<b>100.00 %</b>

<b>Length of time Looked After upto 11/06/2009</b>	<b>Children</b>	<b>Percentage</b>
a) Less than 1 year	104	24.5 %
b) 1 to 2 years	70	16.5 %
c) 2 to 3 years	56	13.2 %
d) 3 to 4 years	56	13.2 %
e) 4 to 5 years	22	5.2 %
f) 5 to 10 years	77	18.2 %
g) 10 years & over	39	9.2 %
<b>Total</b>	<b>424</b>	<b>100.00 %</b>



# Children & Young People's Department Comparative Authority Analysis



## OC2 Return 2007-08 Including National and Comparative Authority results

**Release Month**  
**For Activity Between**  
**Contact**

June 2009  
01/10/2007 and 30/09/2008  
Alison Wood  
Children and Young People's Department  
Information Management Team  
01332 716056  
[Alison.Wood2@derby.gov.uk](mailto:Alison.Wood2@derby.gov.uk)

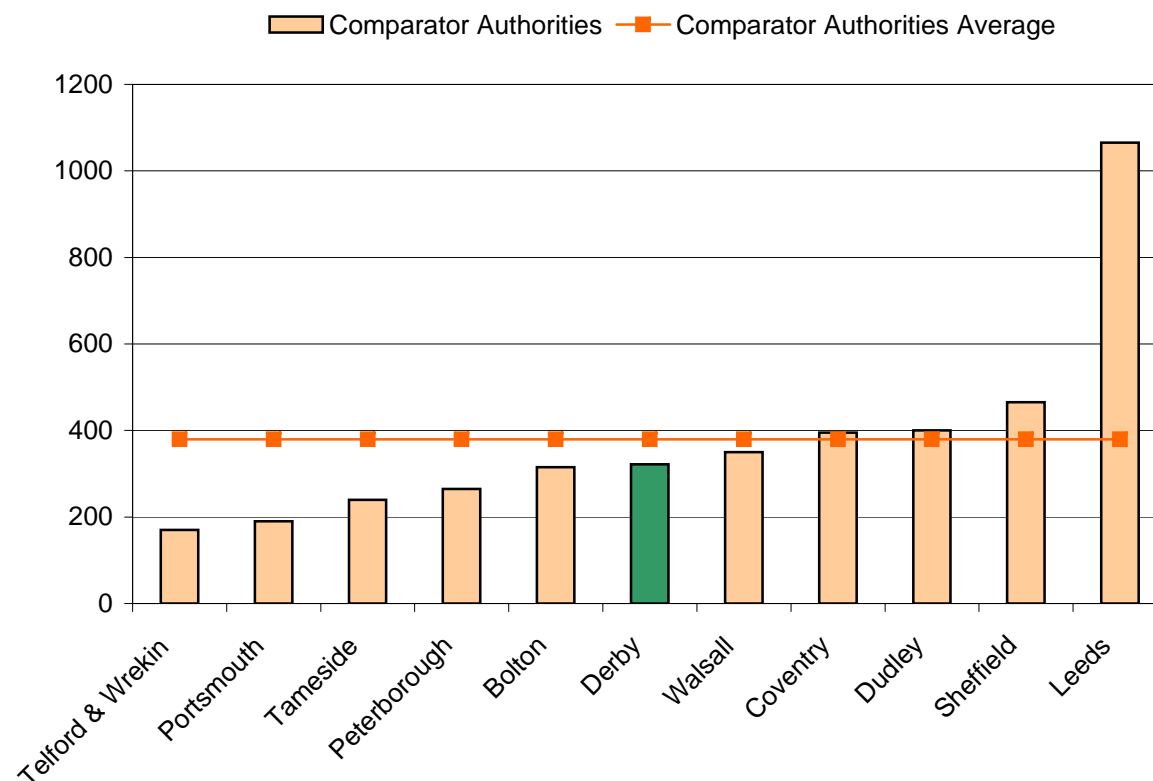
## General education of looked after children

*Number of looked after children who have been looked after for 12 months or more as at 30/09/2008*

Comparator Authorities	Total Number
Telford & Wrekin	170
Portsmouth	190
Tameside	240
Peterborough	265
Bolton	315
<b>Derby</b>	<b>322</b>
Walsall	350
Coventry	395
Dudley	400
Sheffield	465
Leeds	1065

<b>Comparator Authorities Average</b>	<b>380</b>
---------------------------------------	------------

<b>National</b>	<b>43,700</b>
-----------------	---------------



n/a = Not available due to small numbers

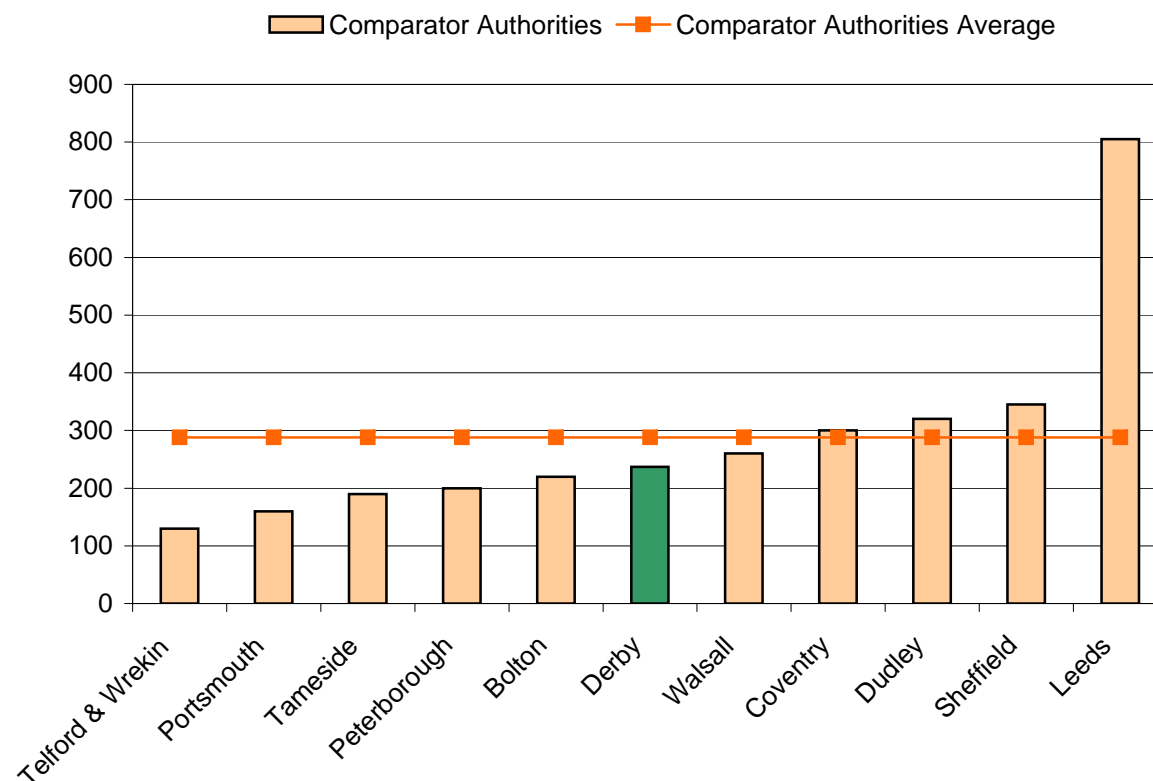
## General education of looked after children

*Number of looked after children of compulsory school age as at 30/09/2008*

Comparator Authorities	School Age
Telford & Wrekin	130
Portsmouth	160
Tameside	190
Peterborough	200
Bolton	220
<b>Derby</b>	<b>237</b>
Walsall	260
Coventry	300
Dudley	320
Sheffield	345
Leeds	805

<b>Comparator Authorities Average</b>	<b>288</b>
---------------------------------------	------------

<b>National</b>	<b>33,000</b>
-----------------	---------------



n/a = Not available due to small numbers

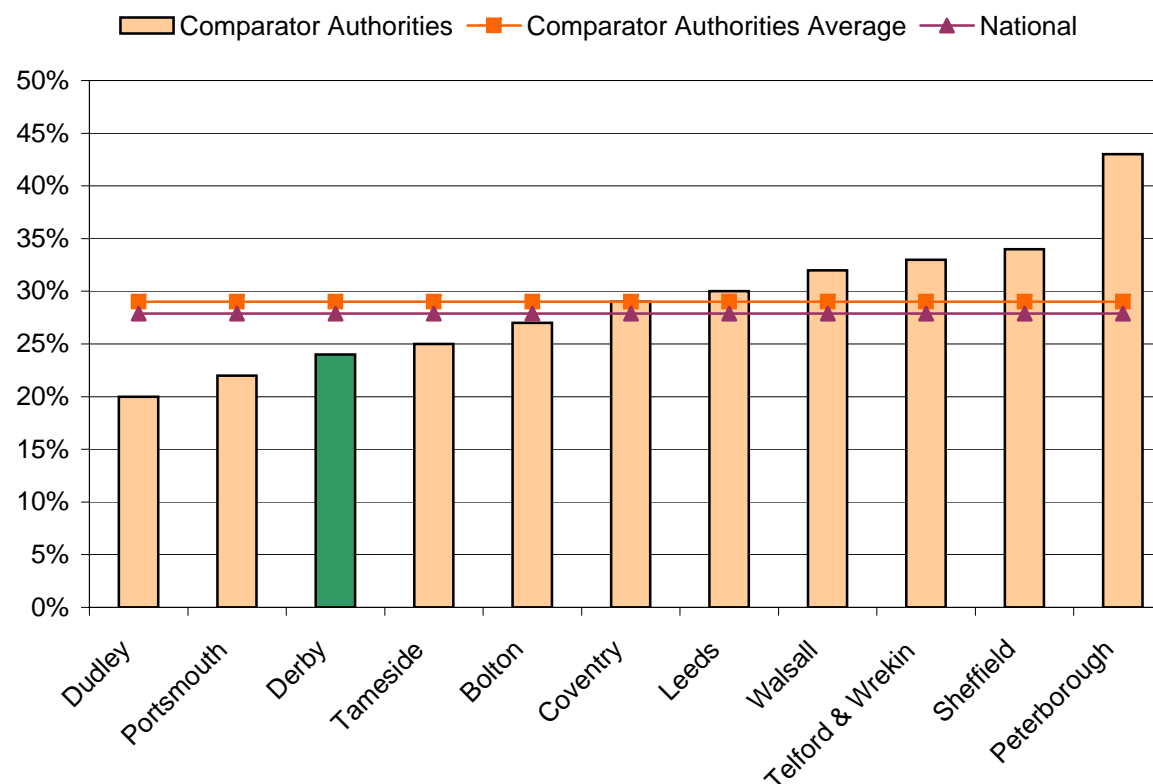
## General education of looked after children

*Percentage of looked after children with a statement of special education needs as at 30/09/2008*

Comparator Authorities	Special Education Needs
Dudley	20%
Portsmouth	22%
<b>Derby</b>	<b>24%</b>
Tameside	25%
Bolton	27%
Coventry	29%
Leeds	30%
Walsall	32%
Telford & Wrekin	33%
Sheffield	34%
Peterborough	43%

<b>Comparator Authorities Average</b>	<b>29%</b>
---------------------------------------	------------

<b>National</b>	<b>28%</b>
-----------------	------------



n/a = Not available due to small numbers

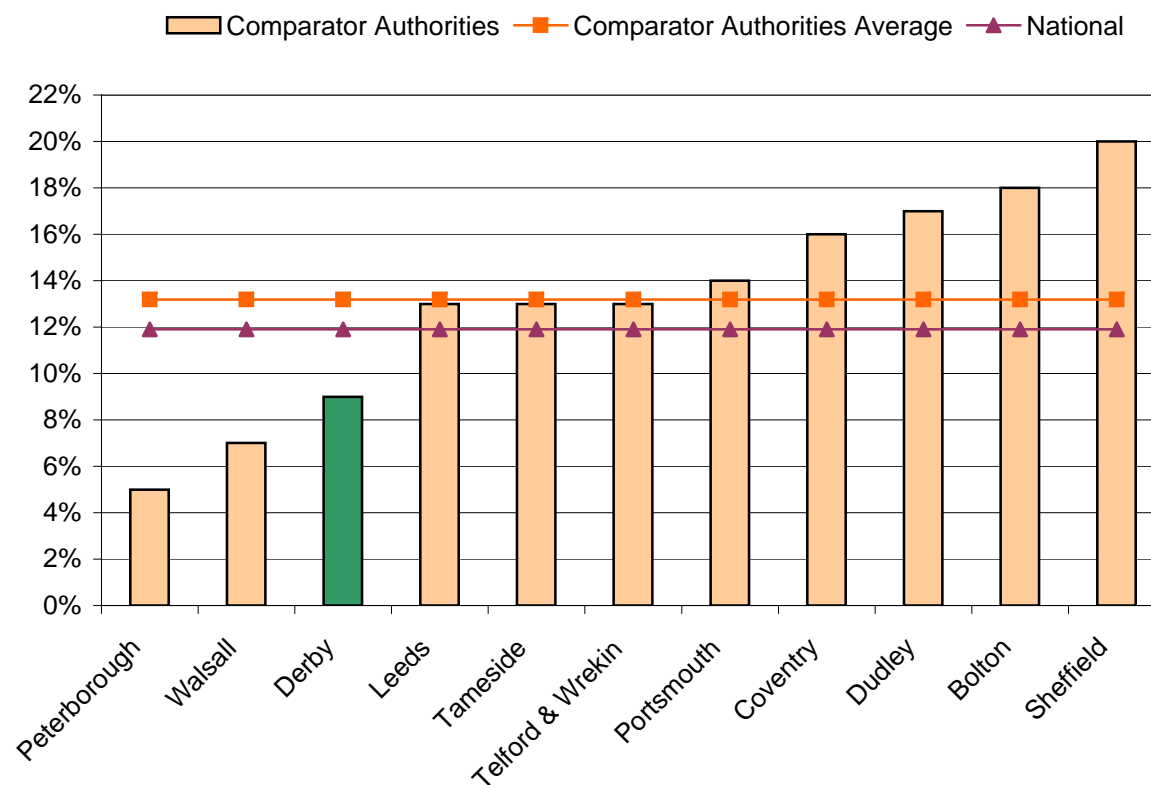
## General education of looked after children

*Percentage of looked after children with 25 days or more absence from school as at 30/09/2008*

Comparator Authorities	Absence
Peterborough	5%
Walsall	7%
<b>Derby</b>	<b>9%</b>
Leeds	13%
Tameside	13%
Telford & Wrekin	13%
Portsmouth	14%
Coventry	16%
Dudley	17%
Bolton	18%
Sheffield	20%

<b>Comparator Authorities Average</b>	<b>13%</b>
---------------------------------------	------------

<b>National</b>	<b>12%</b>
-----------------	------------



n/a = Not available due to small numbers

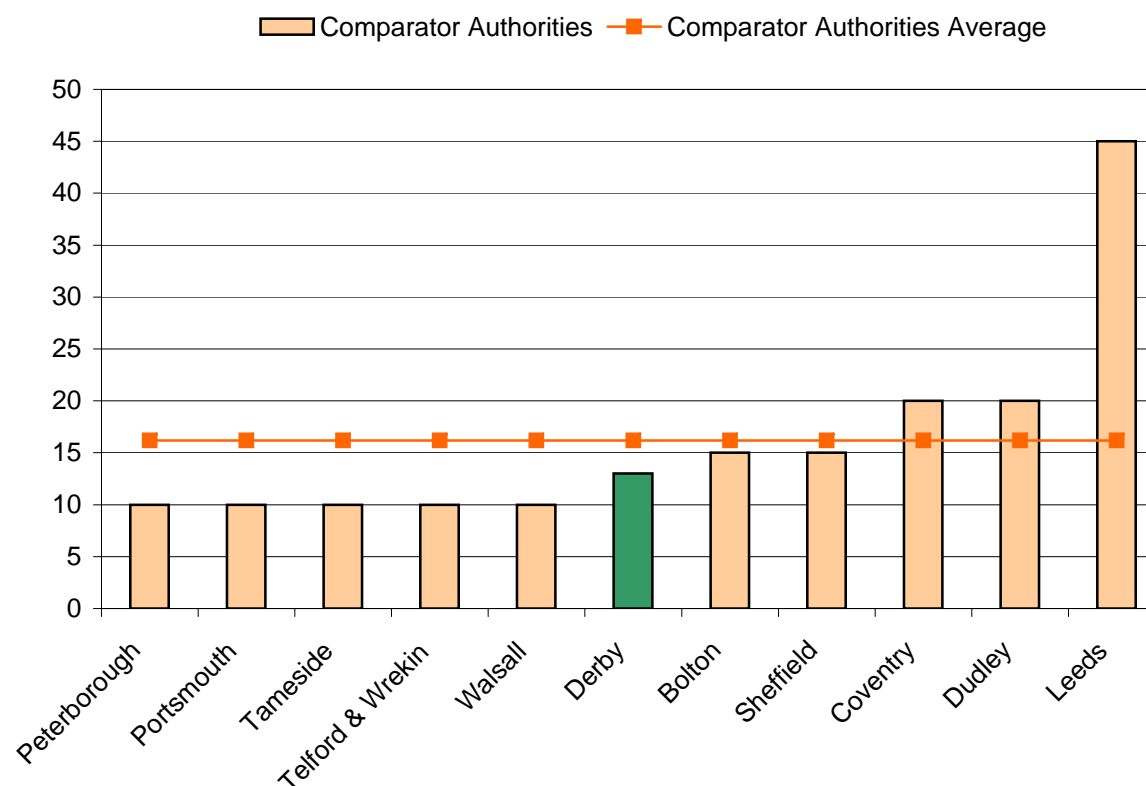
## Key Stage One results for looked after children

*Number of looked after children eligible for Key Stage One assessments as at 30/09/2008*

Comparator Authorities	Key Stage 1
Peterborough	10
Portsmouth	10
Tameside	10
Telford & Wrekin	10
Walsall	10
<b>Derby</b>	<b>13</b>
Bolton	15
Sheffield	15
Coventry	20
Dudley	20
Leeds	45

<b>Comparator Authorities Average</b>	<b>16</b>
---------------------------------------	-----------

<b>National</b>	<b>1,600</b>
-----------------	--------------



n/a = Not available due to small numbers

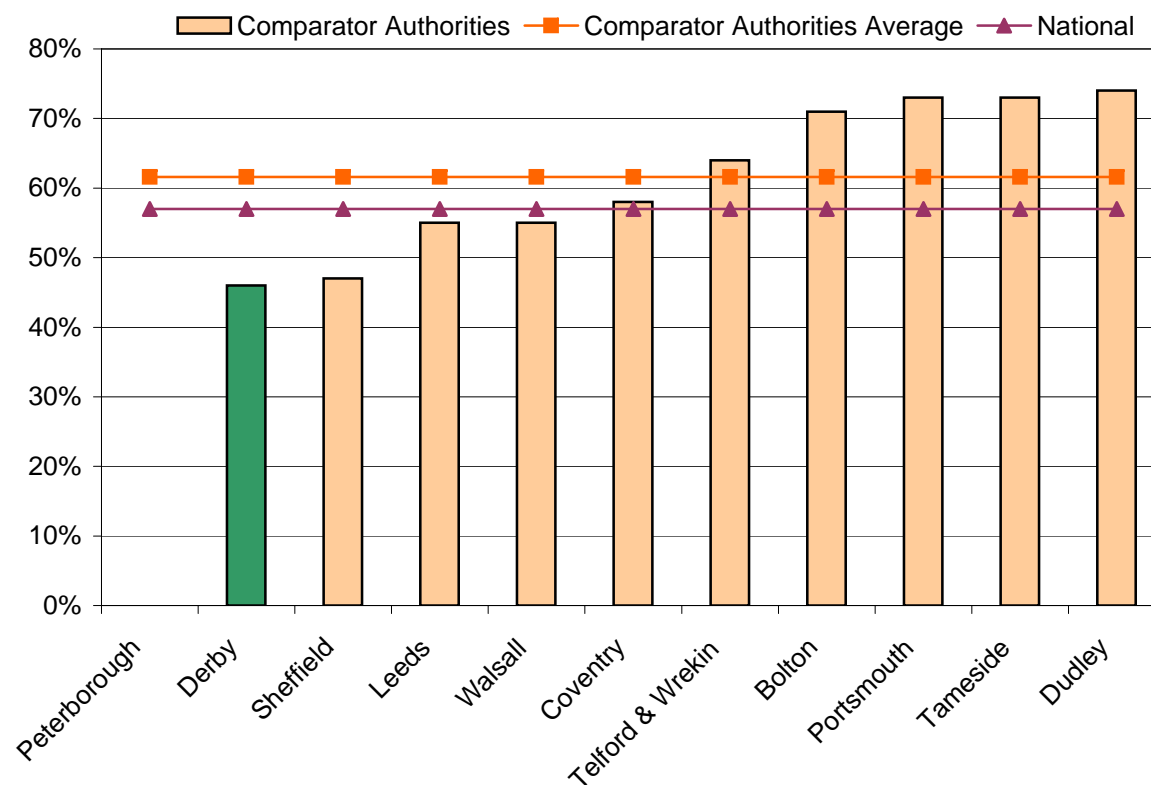
## Key Stage One results for looked after children

*Percentage of looked after children achieving level 2 or above in KS1 Reading as at 30/09/2008*

Comparator Authorities	KS1 Level 2 Reading
Peterborough	n/a
<b>Derby</b>	<b>46%</b>
Sheffield	47%
Leeds	55%
Walsall	55%
Coventry	58%
Telford & Wrekin	64%
Bolton	71%
Portsmouth	73%
Tameside	73%
Dudley	74%

<b>Comparator Authorities Average</b>	<b>62%</b>
---------------------------------------	------------

<b>National</b>	<b>57%</b>
-----------------	------------



n/a = Not available due to small numbers

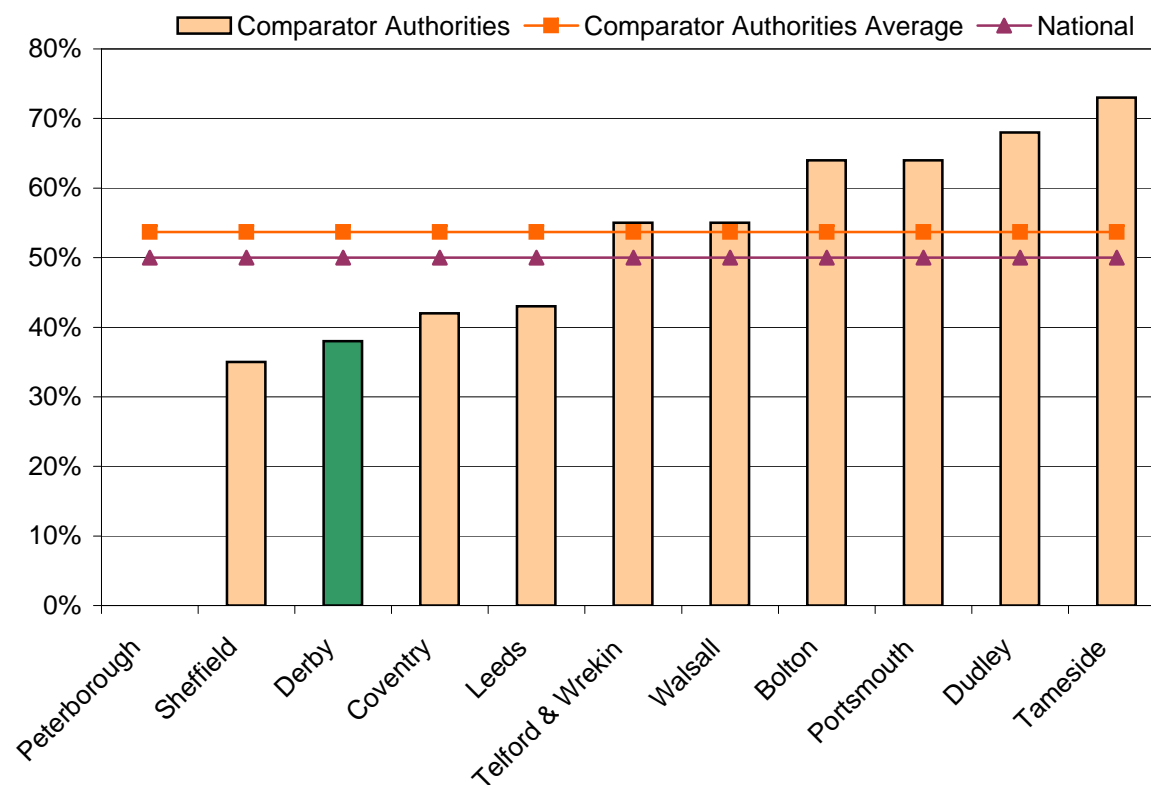
## Key Stage One results for looked after children

*Percentage of looked after children achieving level 2 or above in KS1 Writing as at 30/09/2008*

Comparator Authorities	KS1 Level 2 Writing
Peterborough	n/a
Sheffield	35%
<b>Derby</b>	<b>38%</b>
Coventry	42%
Leeds	43%
Telford & Wrekin	55%
Walsall	55%
Bolton	64%
Portsmouth	64%
Dudley	68%
Tameside	73%

<b>Comparator Authorities Average</b>	<b>54%</b>
---------------------------------------	------------

<b>National</b>	<b>50%</b>
-----------------	------------



n/a = Not available due to small numbers

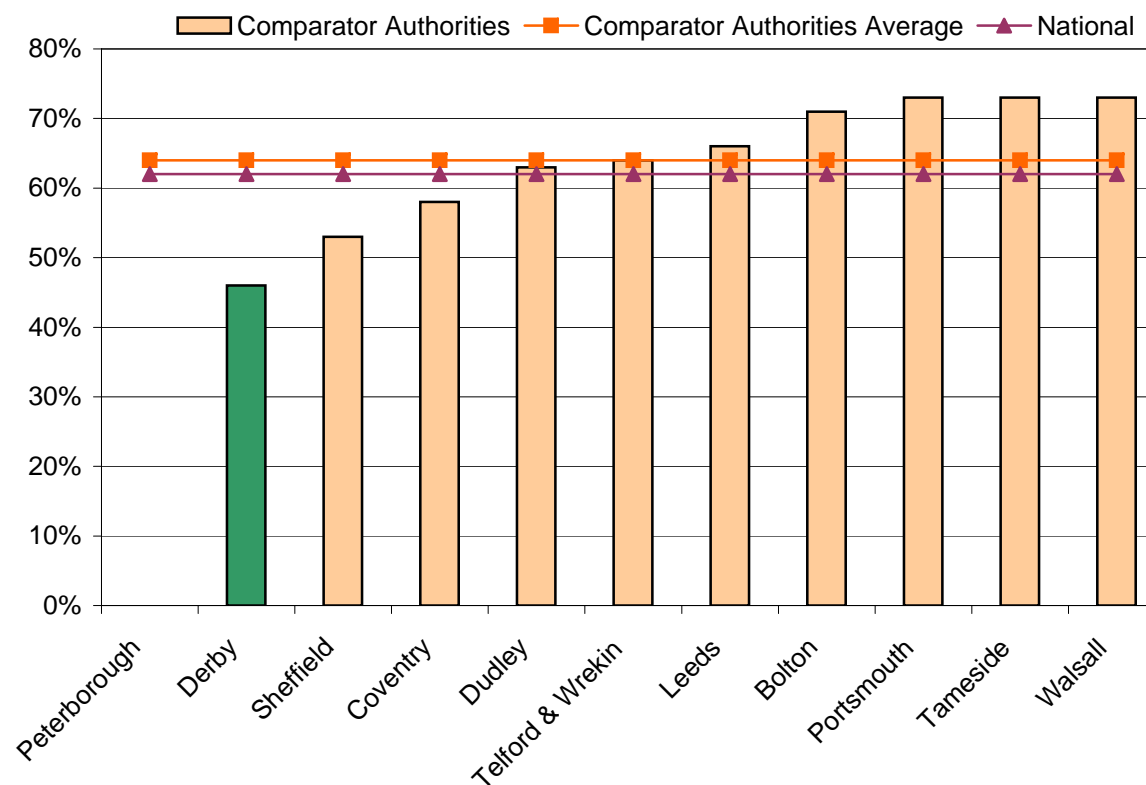


## Key Stage One results for looked after children

*Percentage of looked after children achieving level 2 or above in KS1 Maths as at 30/09/2008*

Comparator Authorities	KS1 Level 2 Maths
Peterborough	n/a
<b>Derby</b>	<b>46%</b>
Sheffield	53%
Coventry	58%
Dudley	63%
Telford & Wrekin	64%
Leeds	66%
Bolton	71%
Portsmouth	73%
Tameside	73%
Walsall	73%
<b>Comparator Authorities Average</b>	<b>64%</b>
<b>National</b>	<b>62%</b>

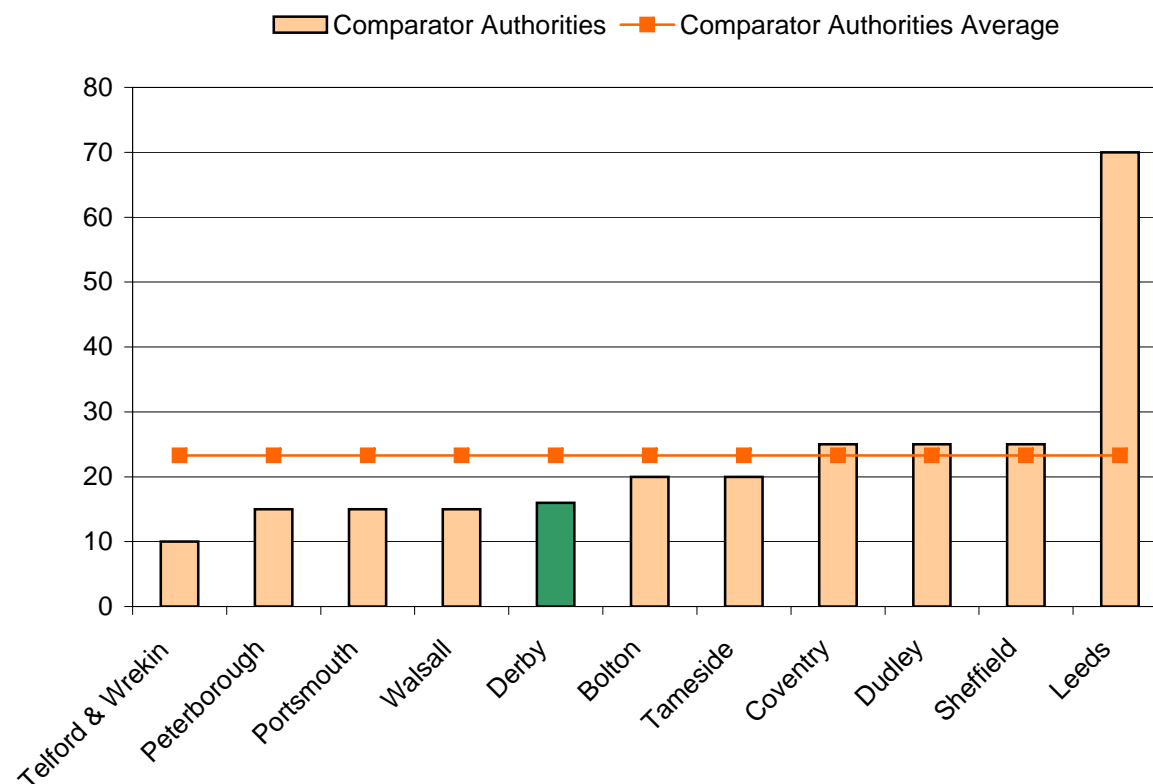
n/a = Not available due to small numbers



## Key Stage Two results for looked after children

*Number of looked after children eligible for Key Stage Two assessments as at 30/09/2008*

Comparator Authorities	Key Stage 2
Telford & Wrekin	10
Peterborough	15
Portsmouth	15
Walsall	15
<b>Derby</b>	<b>16</b>
Bolton	20
Tameside	20
Coventry	25
Dudley	25
Sheffield	25
Leeds	70
<b>Comparator Authorities Average</b>	<b>23</b>
<b>National</b>	<b>2,700</b>

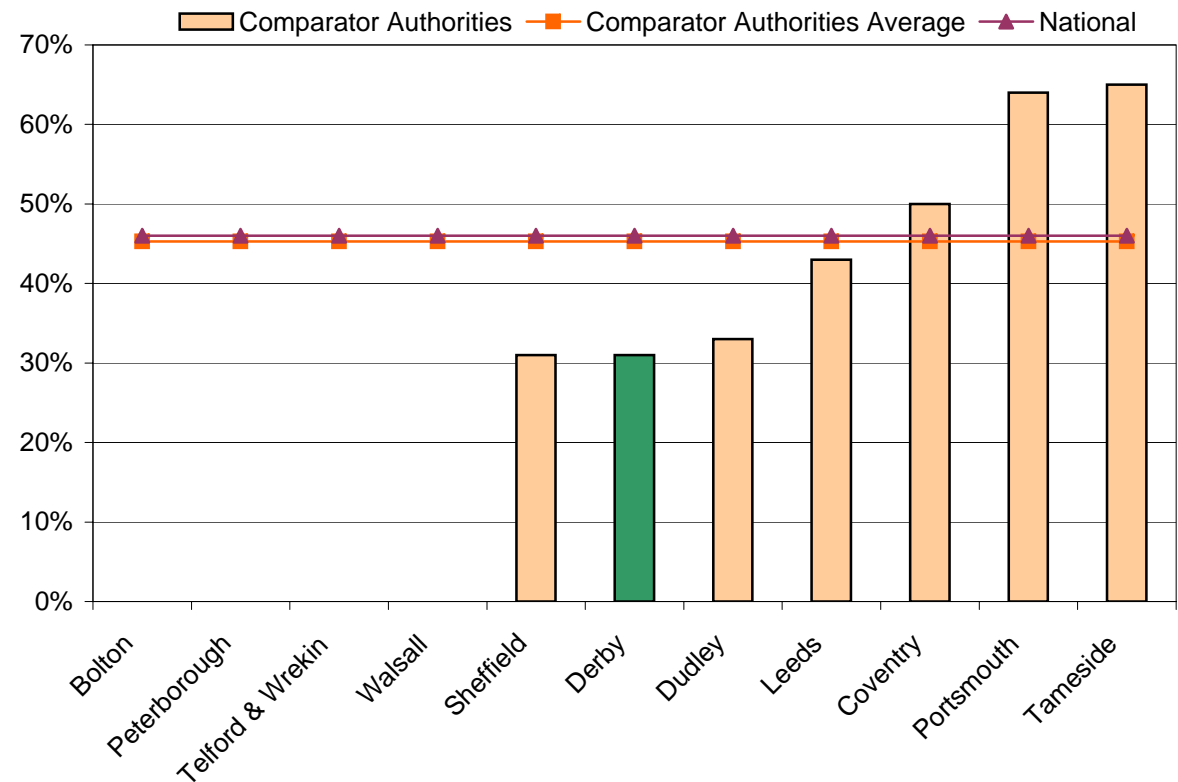


n/a = Not available due to small numbers

## Key Stage Two results for looked after children

*Percentage of looked after children achieving level 4 or above in KS2 English as at 30/09/2008*

Comparator Authorities	KS2 Level 4 English
Bolton	n/a
Peterborough	n/a
Telford & Wrekin	n/a
Walsall	n/a
Sheffield	31%
<b>Derby</b>	<b>31%</b>
Dudley	33%
Leeds	43%
Coventry	50%
Portsmouth	64%
Tameside	65%
<b>Comparator Authorities Average</b>	<b>45%</b>
<b>National</b>	<b>46%</b>



n/a = Not available due to small numbers

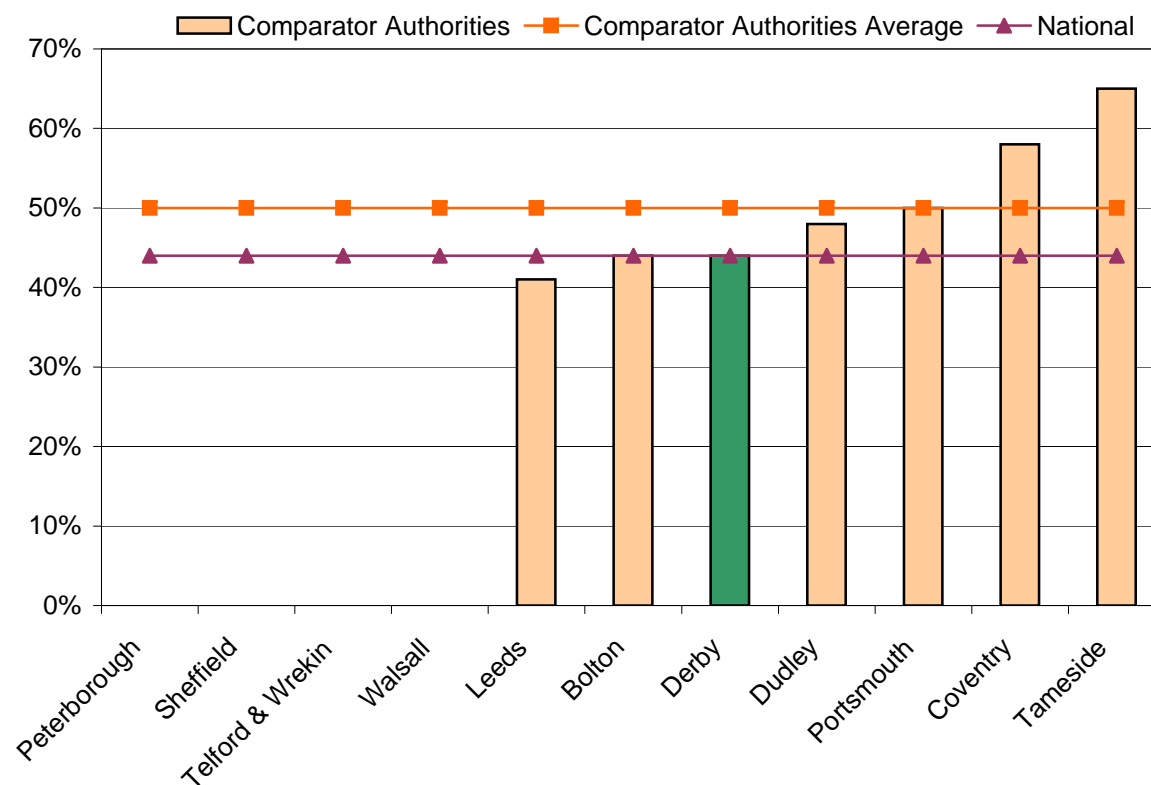
## Key Stage Two results for looked after children

*Percentage of looked after children achieving level 4 or above in KS2 Maths as at 30/09/2008*

Comparator Authorities	KS2 Level 4 Maths
Peterborough	n/a
Sheffield	n/a
Telford & Wrekin	n/a
Walsall	n/a
Leeds	41%
Bolton	44%
<b>Derby</b>	<b>44%</b>
Dudley	48%
Portsmouth	50%
Coventry	58%
Tameside	65%

<b>Comparator Authorities Average</b>	<b>50%</b>
---------------------------------------	------------

<b>National</b>	<b>44%</b>
-----------------	------------



n/a = Not available due to small numbers

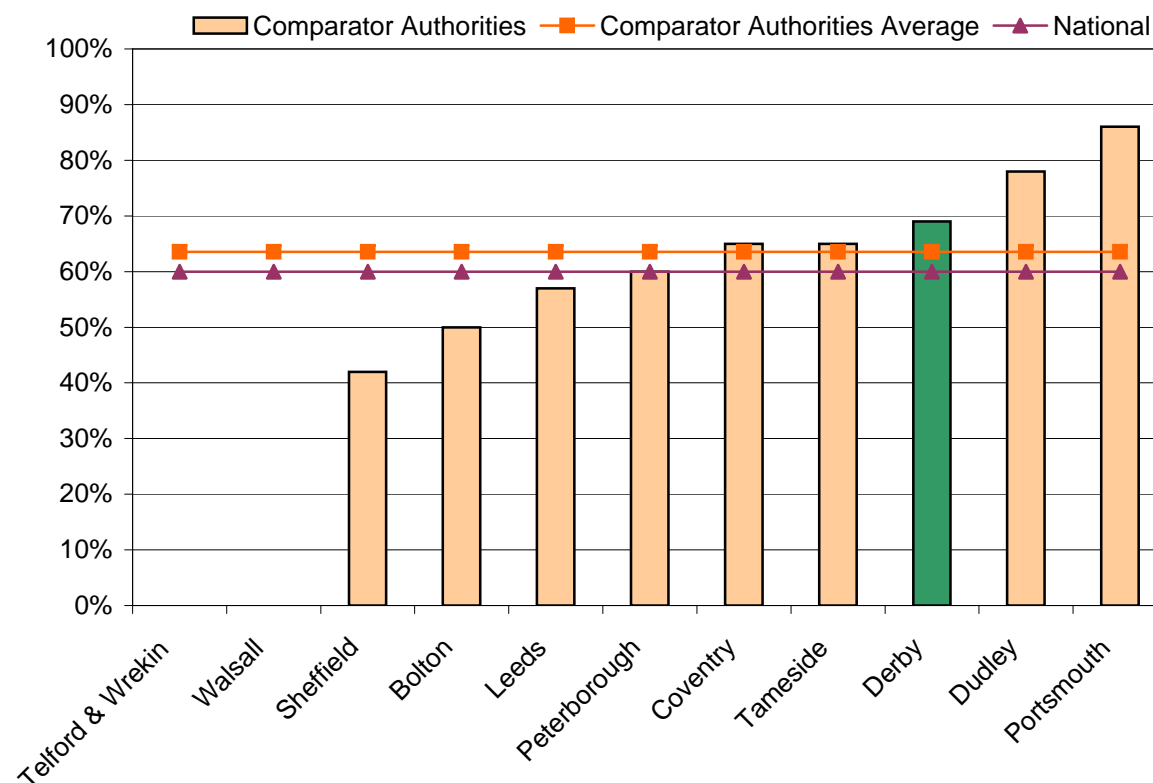
## Key Stage Two results for looked after children

*Percentage of looked after children achieving level 4 or above in KS2 Science as at 30/09/2008*

Comparator Authorities	KS2 Level 4 Science
Telford & Wrekin	n/a
Walsall	n/a
Sheffield	42%
Bolton	50%
Leeds	57%
Peterborough	60%
Coventry	65%
Tameside	65%
<b>Derby</b>	<b>69%</b>
Dudley	78%
Portsmouth	86%

<b>Comparator Authorities Average</b>	<b>64%</b>
---------------------------------------	------------

<b>National</b>	<b>60%</b>
-----------------	------------



n/a = Not available due to small numbers

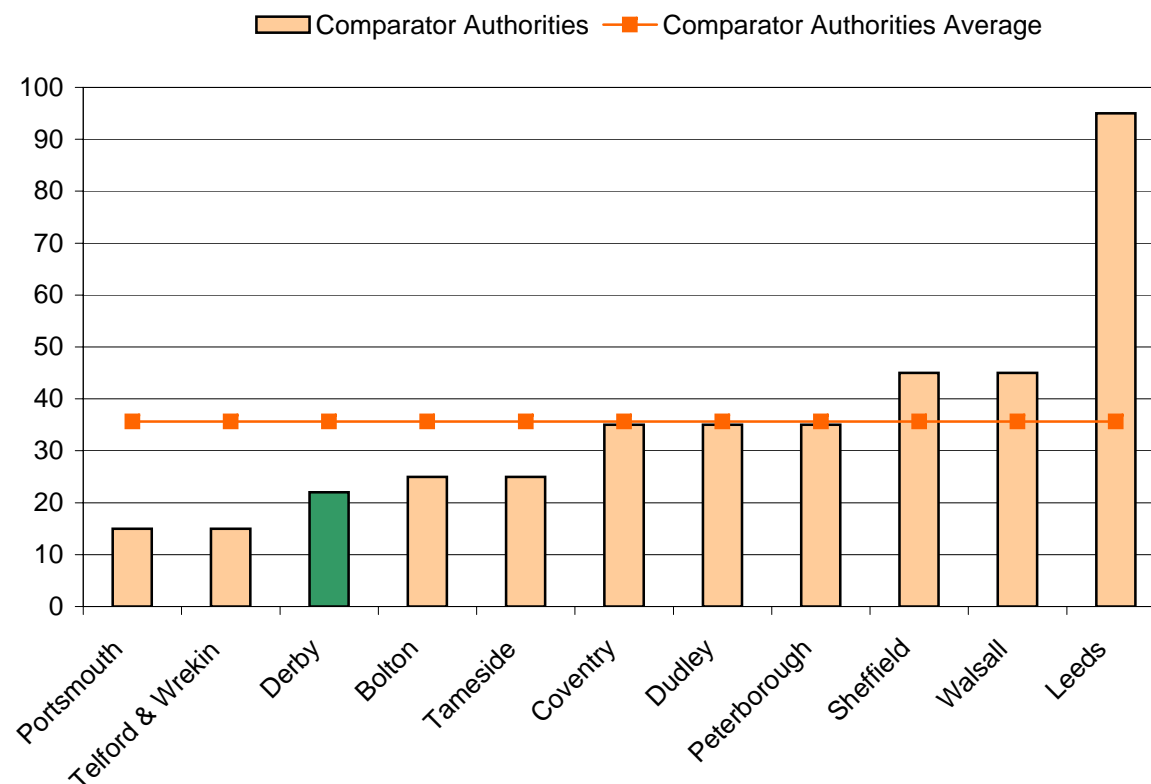
## Key Stage Three results for looked after children

*Number of looked after children eligible for Key Stage Three assessments as at 30/09/2008*

Comparator Authorities	Key Stage 3
Portsmouth	15
Telford & Wrekin	15
<b>Derby</b>	<b>22</b>
Bolton	25
Tameside	25
Coventry	35
Dudley	35
Peterborough	35
Sheffield	45
Walsall	45
Leeds	95

<b>Comparator Authorities Average</b>	<b>36</b>
---------------------------------------	-----------

<b>National</b>	<b>3,900</b>
-----------------	--------------



n/a = Not available due to small numbers

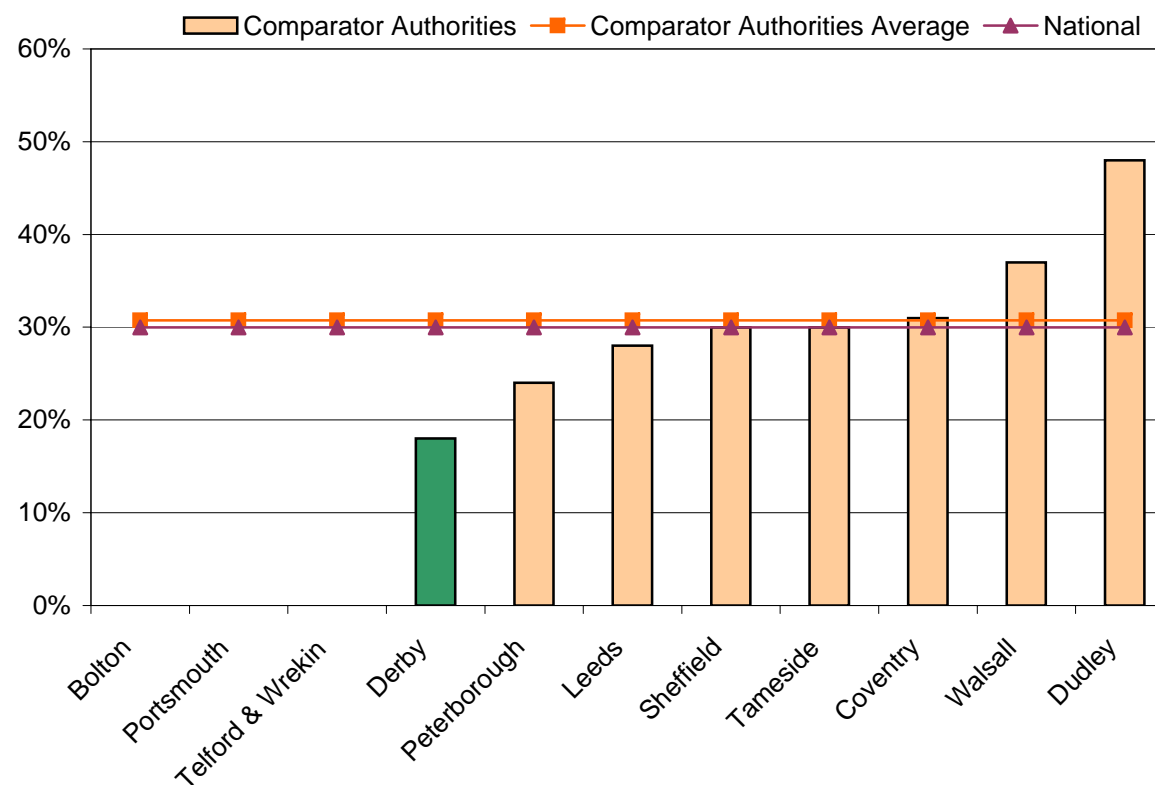
## Key Stage Three results for looked after children

*Percentage of looked after children achieving level 5 or above in KS3 English as at 30/09/2008*

Comparator Authorities	KS3 Level 5 English
Bolton	n/a
Portsmouth	n/a
Telford & Wrekin	n/a
<b>Derby</b>	<b>18%</b>
Peterborough	24%
Leeds	28%
Sheffield	30%
Tameside	30%
Coventry	31%
Walsall	37%
Dudley	48%

<b>Comparator Authorities Average</b>	<b>31%</b>
---------------------------------------	------------

<b>National</b>	<b>30%</b>
-----------------	------------



n/a = Not available due to small numbers

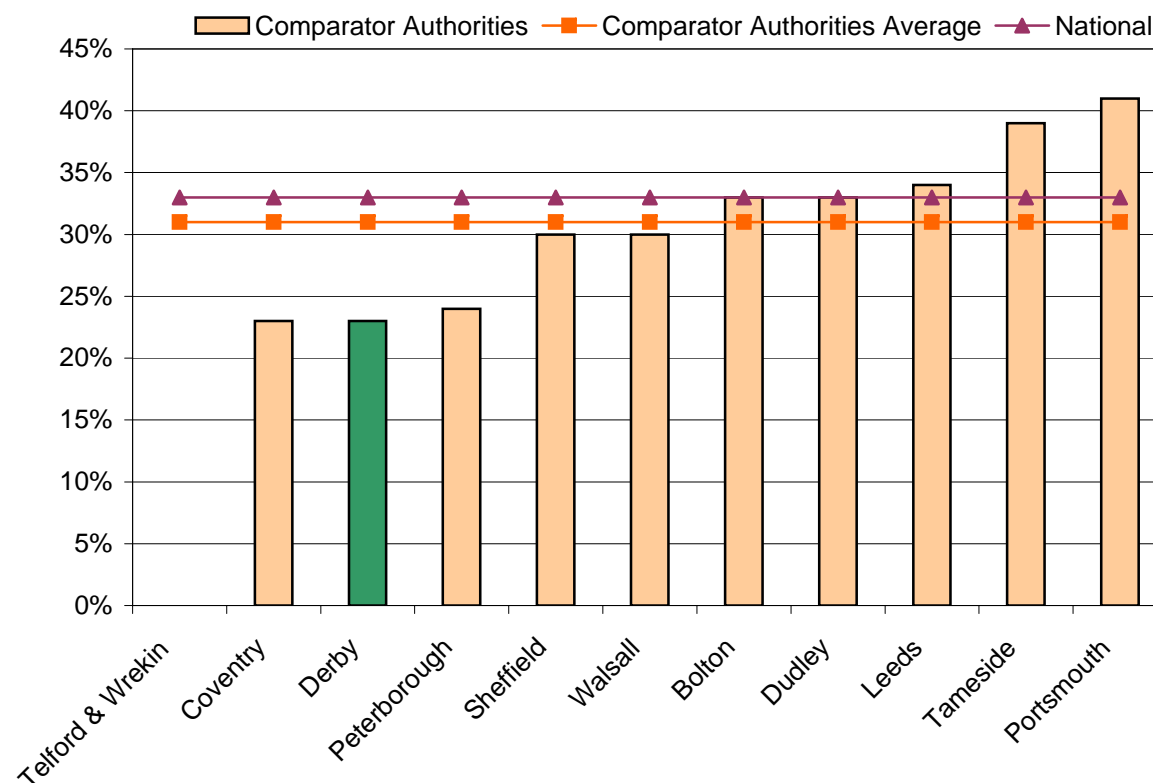
## Key Stage Three results for looked after children

*Percentage of looked after children achieving level 5 or above in KS3 Maths as at 30/09/2008*

Comparator Authorities	KS3 Level 5 Maths
Telford & Wrekin	n/a
Coventry	23%
<b>Derby</b>	<b>23%</b>
Peterborough	24%
Sheffield	30%
Walsall	30%
Bolton	33%
Dudley	33%
Leeds	34%
Tameside	39%
Portsmouth	41%

<b>Comparator Authorities Average</b>	<b>31%</b>
---------------------------------------	------------

<b>National</b>	<b>33%</b>
-----------------	------------



n/a = Not available due to small numbers



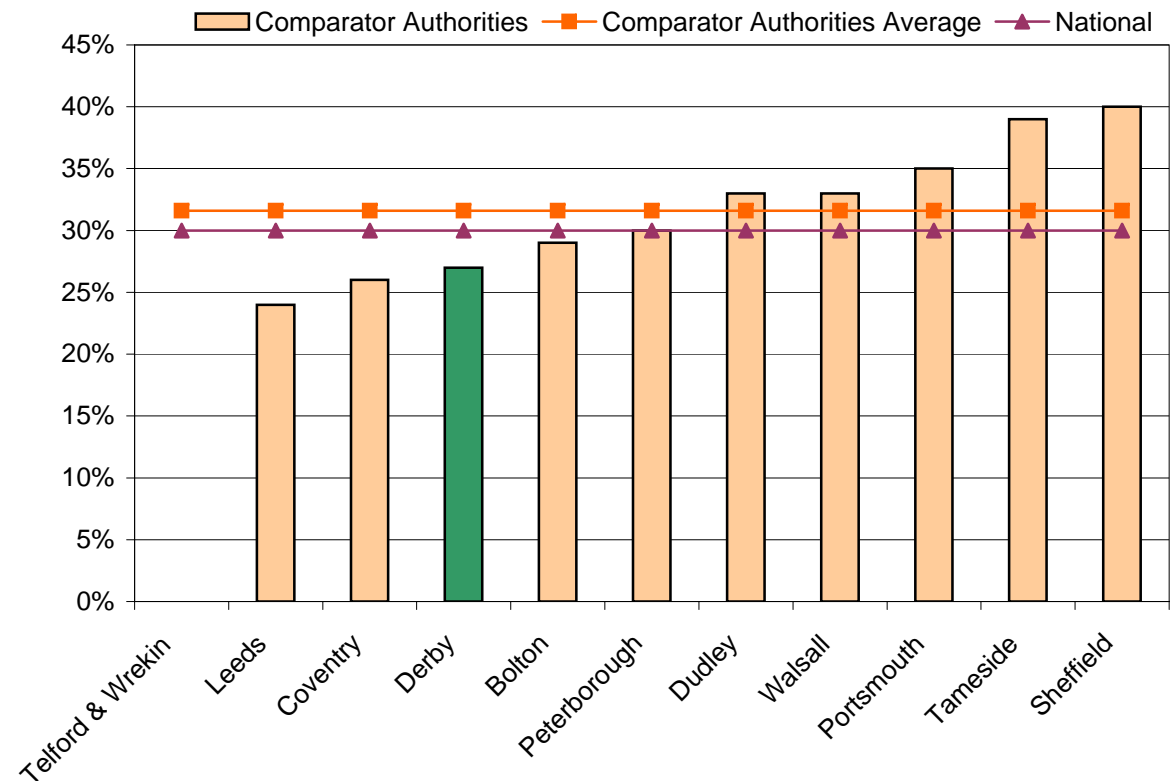
## Key Stage Three results for looked after children

*Percentage of looked after children achieving level 5 or above in KS3 Science as at 30/09/2008*

Comparator Authorities	KS3 Level 5 Science
Telford & Wrekin	n/a
Leeds	24%
Coventry	26%
<b>Derby</b>	<b>27%</b>
Bolton	29%
Peterborough	30%
Dudley	33%
Walsall	33%
Portsmouth	35%
Tameside	39%
Sheffield	40%

<b>Comparator Authorities Average</b>	<b>32%</b>
---------------------------------------	------------

<b>National</b>	<b>30%</b>
-----------------	------------



n/a = Not available due to small numbers

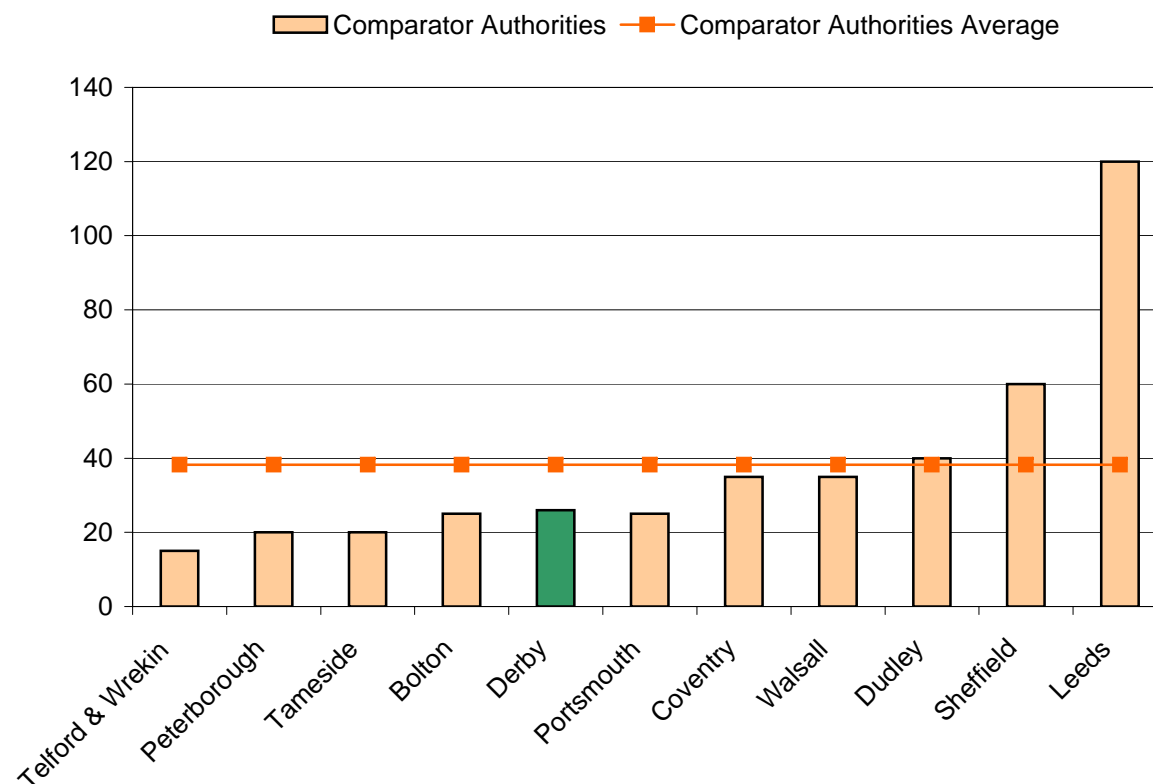
## GCSE results for looked after children

*Number of looked after children eligible for GCSE examinations as at 30/09/2008*

Comparator Authorities	GCSE
Telford & Wrekin	15
Peterborough	20
Tameside	20
Bolton	25
<b>Derby</b>	<b>26</b>
Portsmouth	25
Coventry	35
Walsall	35
Dudley	40
Sheffield	60
Leeds	120

<b>Comparator Authorities Average</b>	<b>38</b>
---------------------------------------	-----------

<b>National</b>	<b>5,100</b>
-----------------	--------------



n/a = Not available due to small numbers

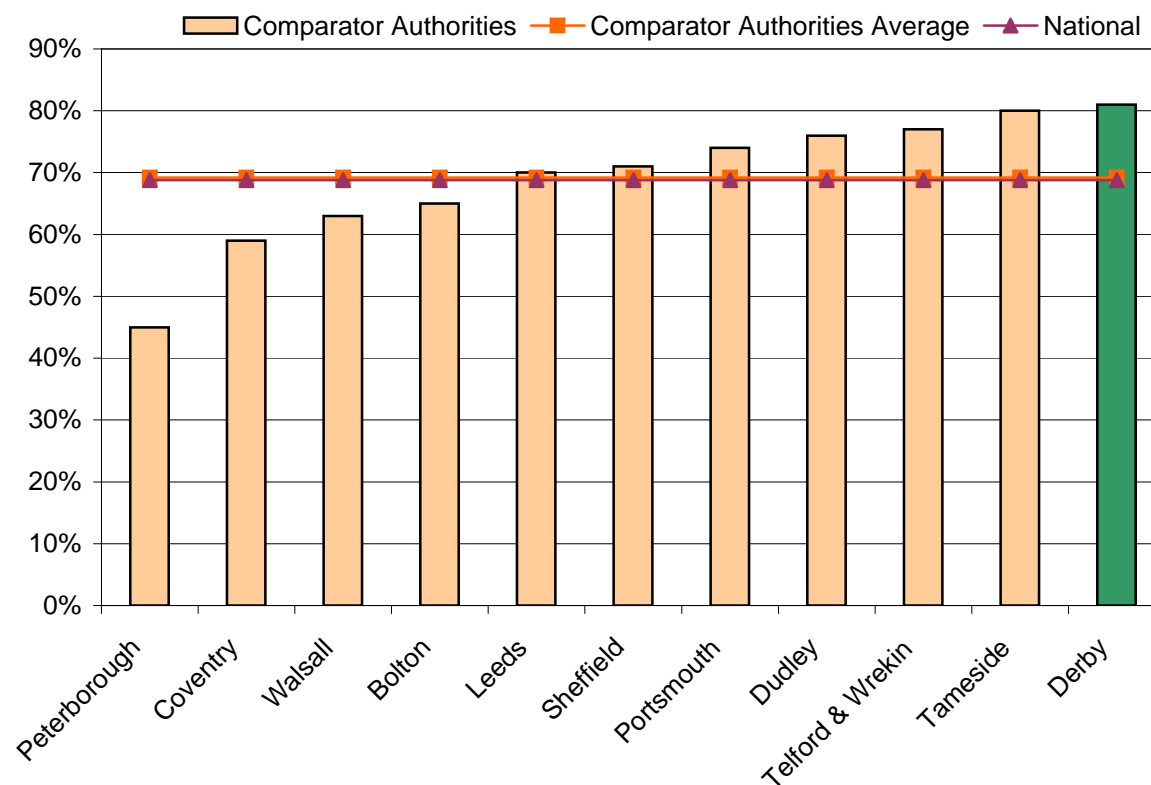
## GCSE results for looked after children

*Percentage of looked after children sitting at least one GCSE examination as at 30/09/2008*

Comparator Authorities	Sat at least 1 GCSE
Peterborough	45%
Coventry	59%
Walsall	63%
Bolton	65%
Leeds	70%
Sheffield	71%
Portsmouth	74%
Dudley	76%
Telford & Wrekin	77%
Tameside	80%
<b>Derby</b>	<b>81%</b>

<b>Comparator Authorities Average</b>	<b>69%</b>
---------------------------------------	------------

<b>National</b>	<b>69%</b>
-----------------	------------



n/a = Not available due to small numbers

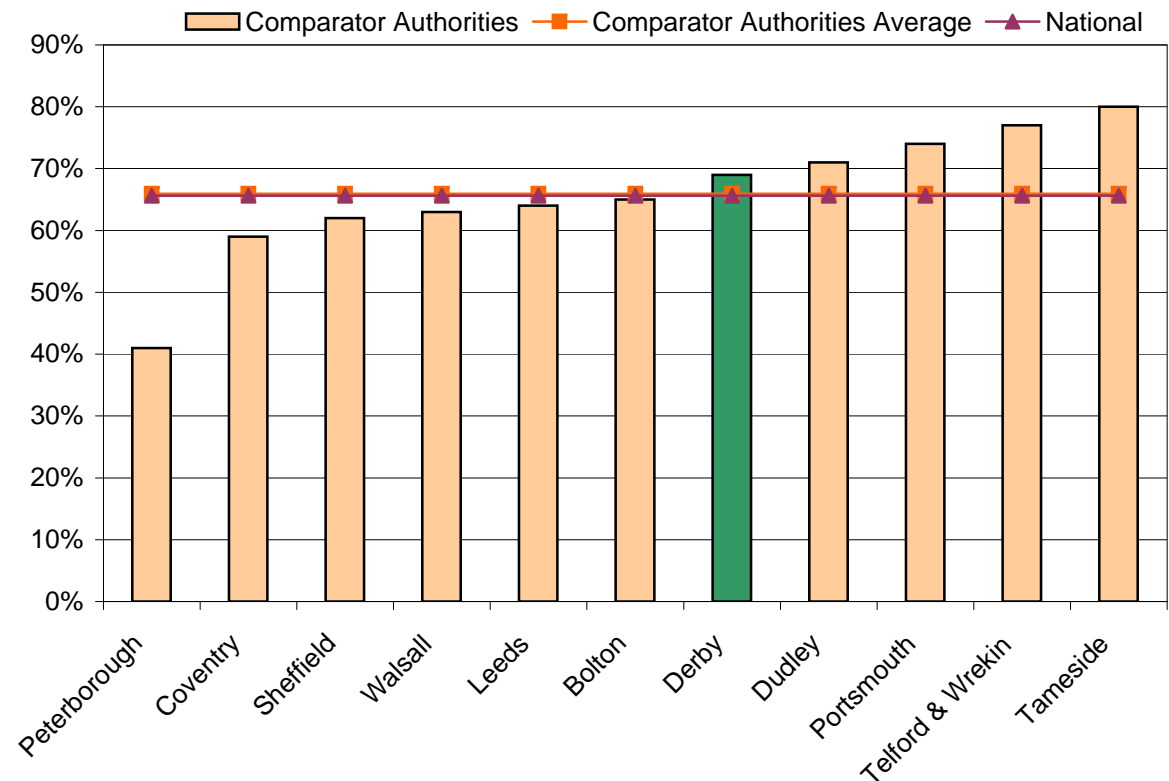
## GCSE results for looked after children

*Percentage of looked after children achieving at least 1 GCSE at grade A\* - G as at 30/09/2008*

Comparator Authorities	At least 1 GCSE at grade A* - G
Peterborough	41%
Coventry	59%
Sheffield	62%
Walsall	63%
Leeds	64%
Bolton	65%
<b>Derby</b>	<b>69%</b>
Dudley	71%
Portsmouth	74%
Telford & Wrekin	77%
Tameside	80%

<b>Comparator Authorities Average</b>	<b>66%</b>
---------------------------------------	------------

<b>National</b>	<b>66%</b>
-----------------	------------



n/a = Not available due to small numbers

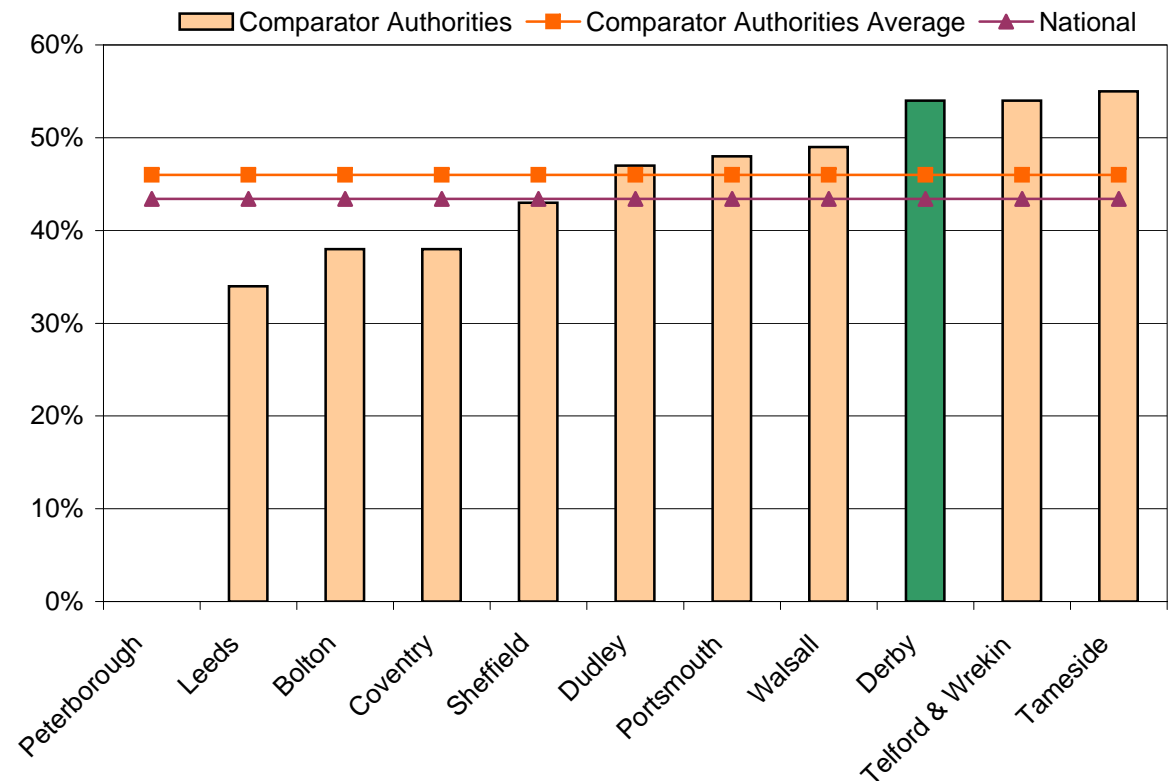
## GCSE results for looked after children

*Percentage of looked after children achieving at least 5 GCSE's at grade A\* - G as at 30/09/2008*

Comparator Authorities	At least 5 GCSE's at grade A* - G
Peterborough	n/a
Leeds	34%
Bolton	38%
Coventry	38%
Sheffield	43%
Dudley	47%
Portsmouth	48%
Walsall	49%
<b>Derby</b>	<b>54%</b>
Telford & Wrekin	54%
Tameside	55%

<b>Comparator Authorities Average</b>	<b>46%</b>
---------------------------------------	------------

<b>National</b>	<b>43%</b>
-----------------	------------



n/a = Not available due to small numbers

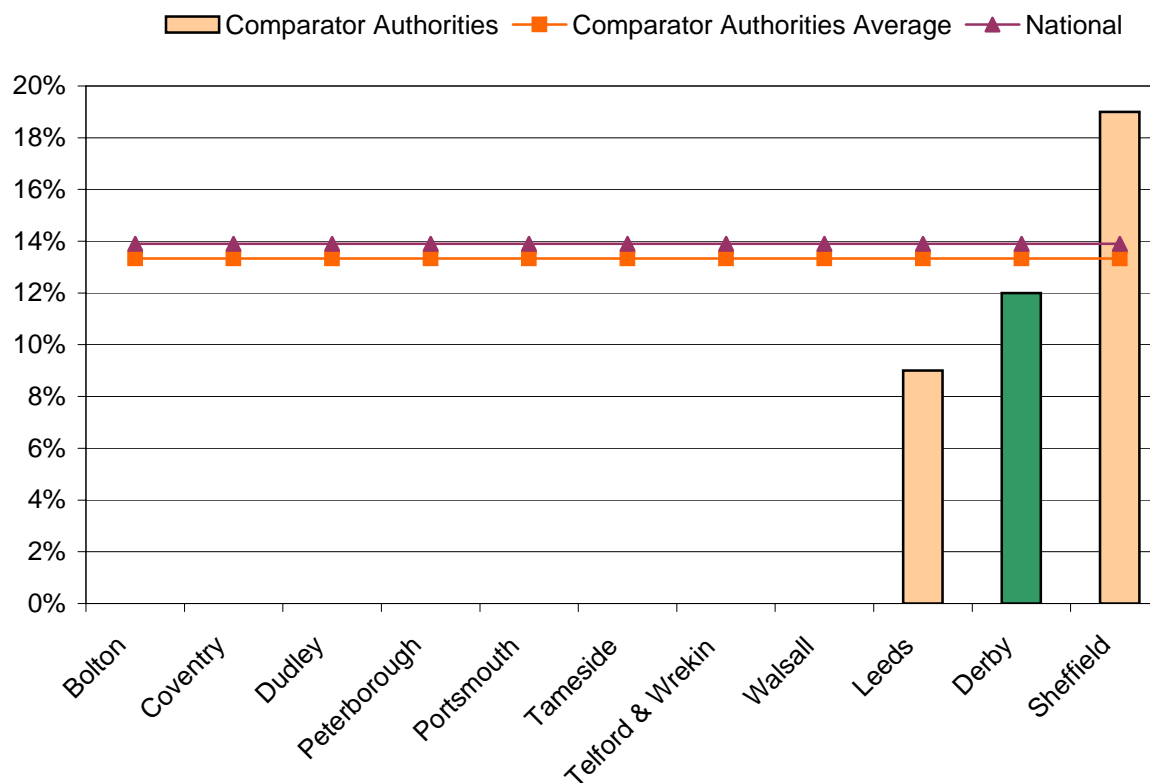
## GCSE results for looked after children

*Percentage of looked after children achieving at least 5 GCSE's at grade A\* - C as at 30/09/2008*

Comparator Authorities	At least 5 GCSE's at grade A* - C
Bolton	n/a
Coventry	n/a
Dudley	n/a
Peterborough	n/a
Portsmouth	n/a
Tameside	n/a
Telford & Wrekin	n/a
Walsall	n/a
Leeds	9%
<b>Derby</b>	<b>12%</b>
Sheffield	19%

<b>Comparator Authorities Average</b>	<b>13%</b>
---------------------------------------	------------

<b>National</b>	<b>14%</b>
-----------------	------------



n/a = Not available due to small numbers

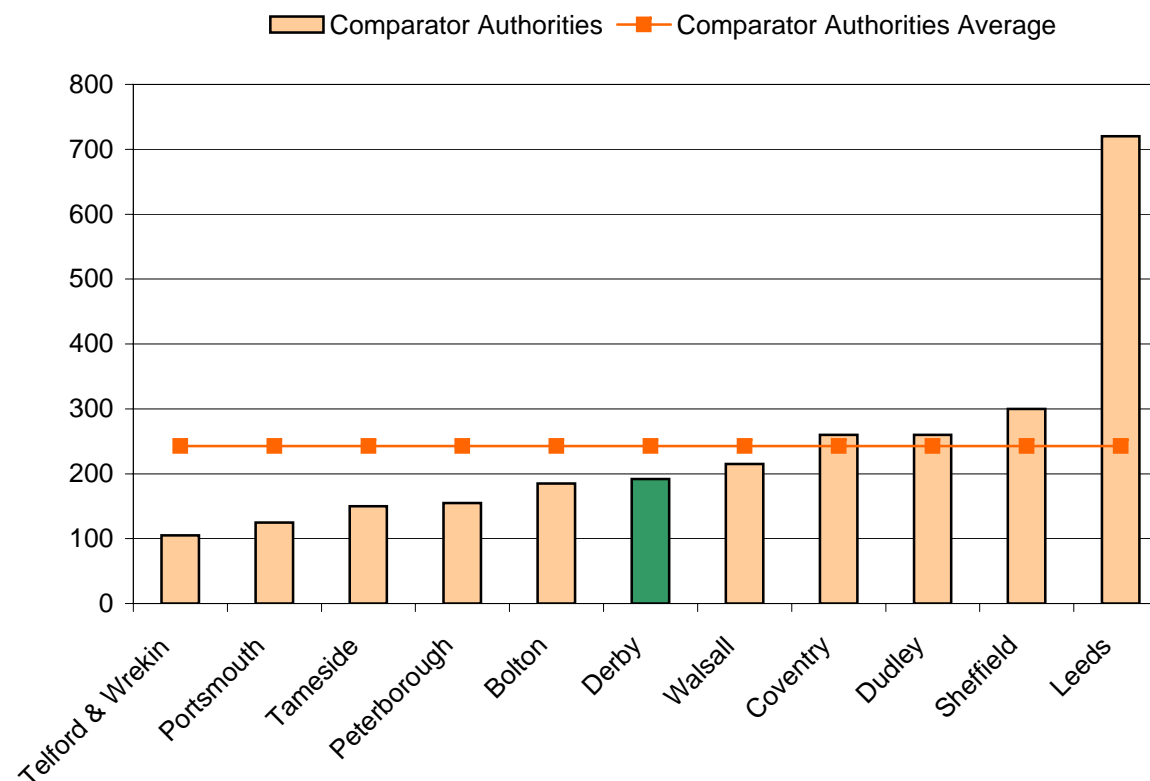
## Cautions and Convictions for looked after children

*Number of looked after children aged 10 or over as at 30/09/2008*

Comparator Authorities	Aged 10 or over
Telford & Wrekin	105
Portsmouth	125
Tameside	150
Peterborough	155
Bolton	185
<b>Derby</b>	<b>192</b>
Walsall	215
Coventry	260
Dudley	260
Sheffield	300
Leeds	720

<b>Comparator Authorities Average</b>	<b>242</b>
---------------------------------------	------------

<b>National</b>	<b>30,000</b>
-----------------	---------------



n/a = Not available due to small numbers

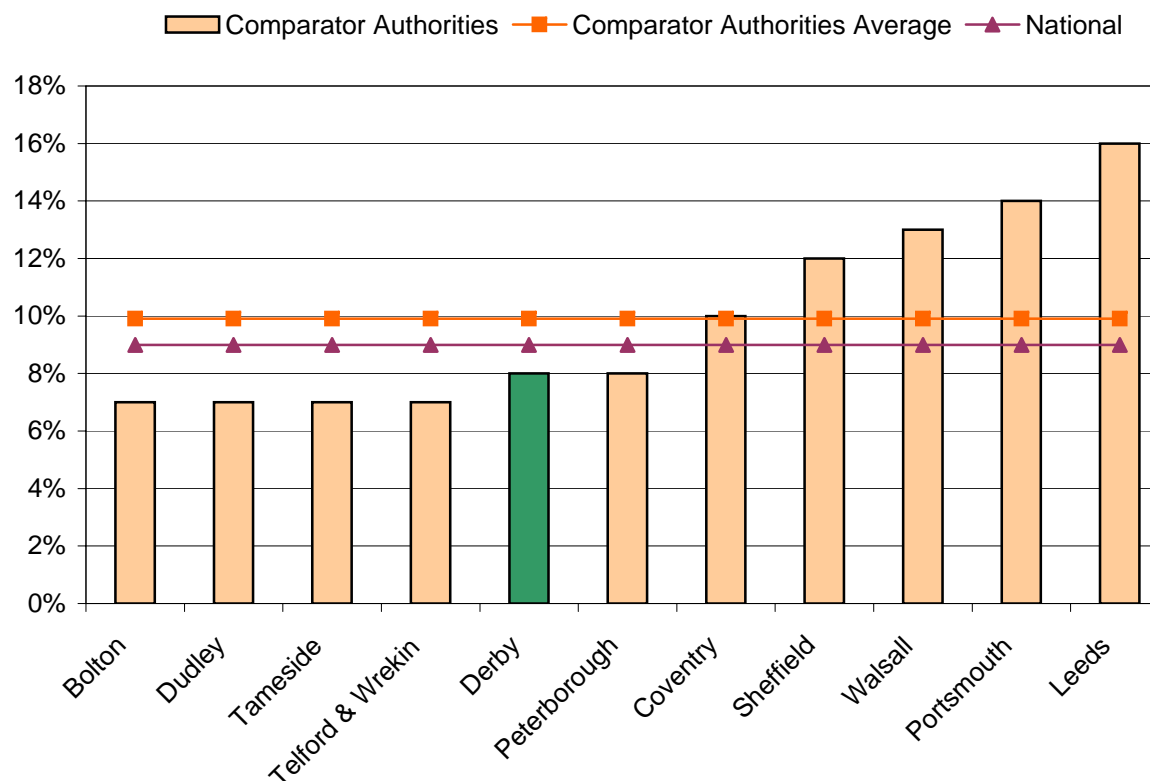
## Cautions and Convictions for looked after children

*Percentage of looked after children aged 10 or over cautioned or convicted as at 30/09/2008*

Comparator Authorities	Cautioned or Convicted
Bolton	7%
Dudley	7%
Tameside	7%
Telford & Wrekin	7%
<b>Derby</b>	<b>8%</b>
Peterborough	8%
Coventry	10%
Sheffield	12%
Walsall	13%
Portsmouth	14%
Leeds	16%

<b>Comparator Authorities Average</b>	<b>10%</b>
---------------------------------------	------------

<b>National</b>	<b>9%</b>
-----------------	-----------



n/a = Not available due to small numbers



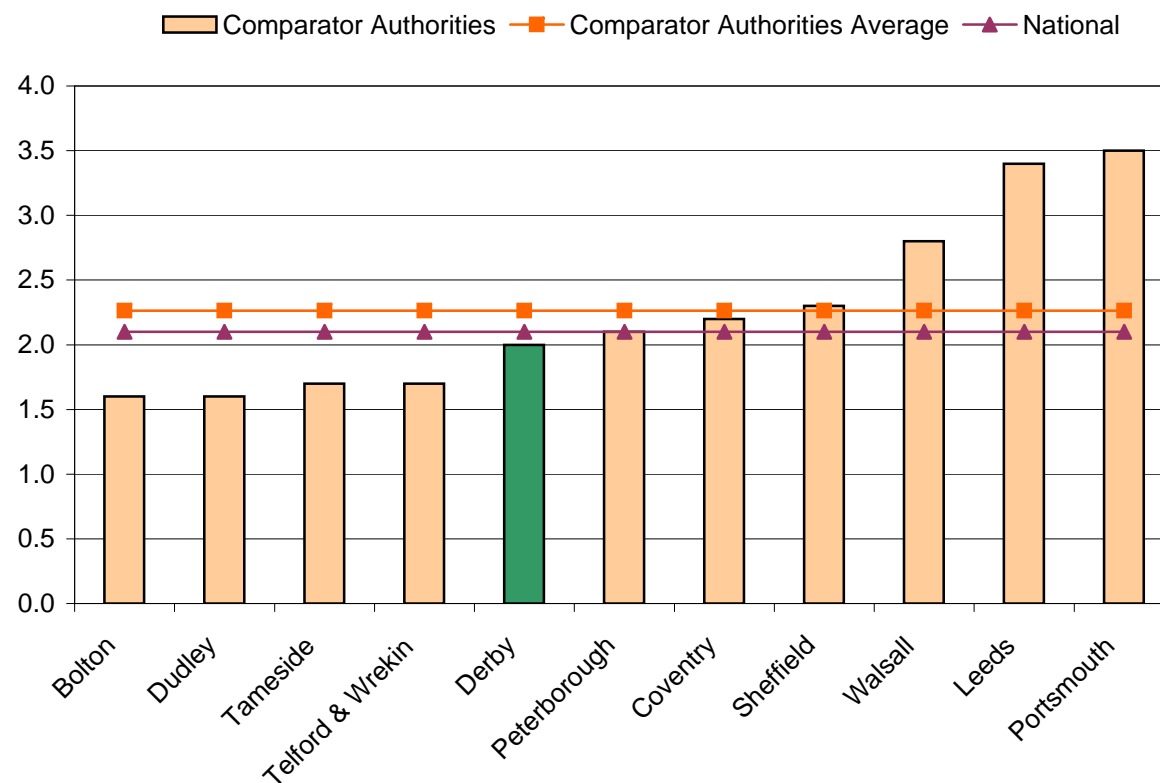
## Cautions and Convictions for looked after children

**PAF C18 - The proportion of children (aged 10 or over) who had been looked after continuously for at least 12 months, who were convicted or subject to a final warning or reprimand during the year for an offence committed whilst they were looked after, expressed as a ratio of the proportion of all children and young people convicted or subject to a final warning or reprimand for an offence in the police force area.**

Comparator Authorities	PAF C18
Bolton	1.6
Dudley	1.6
Tameside	1.7
Telford & Wrekin	1.7
<b>Derby</b>	<b>2.0</b>
Peterborough	2.1
Coventry	2.2
Sheffield	2.3
Walsall	2.8
Leeds	3.4
Portsmouth	3.5

<b>Comparator Authorities Average</b>	<b>2.3</b>
---------------------------------------	------------

<b>National</b>	<b>2.1</b>
-----------------	------------



n/a = Not available due to small numbers

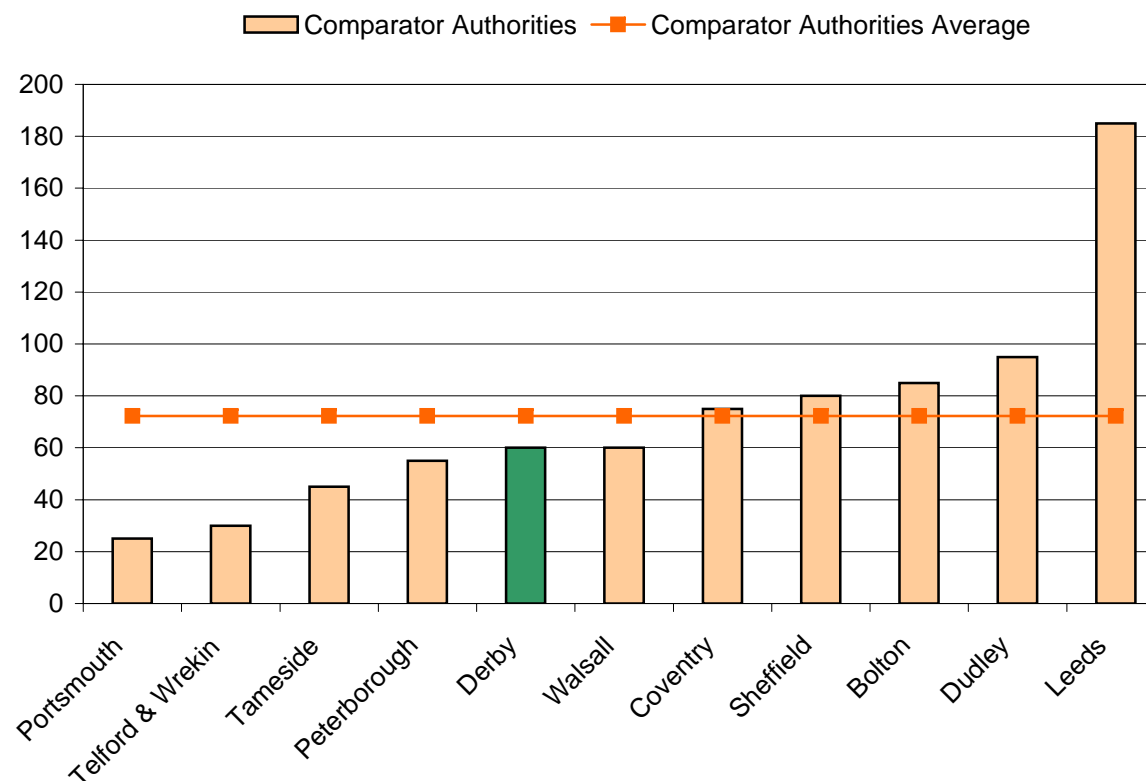
## Health Outcomes for looked after children

*Number of looked after children aged 5 or under as at 30/09/2008*

Comparator Authorities	Aged 5 or under
Portsmouth	25
Telford & Wrekin	30
Tameside	45
Peterborough	55
<b>Derby</b>	<b>60</b>
Walsall	60
Coventry	75
Sheffield	80
Bolton	85
Dudley	95
Leeds	185

<b>Comparator Authorities Average</b>	<b>72</b>
---------------------------------------	-----------

<b>National</b>	<b>71</b>
-----------------	-----------

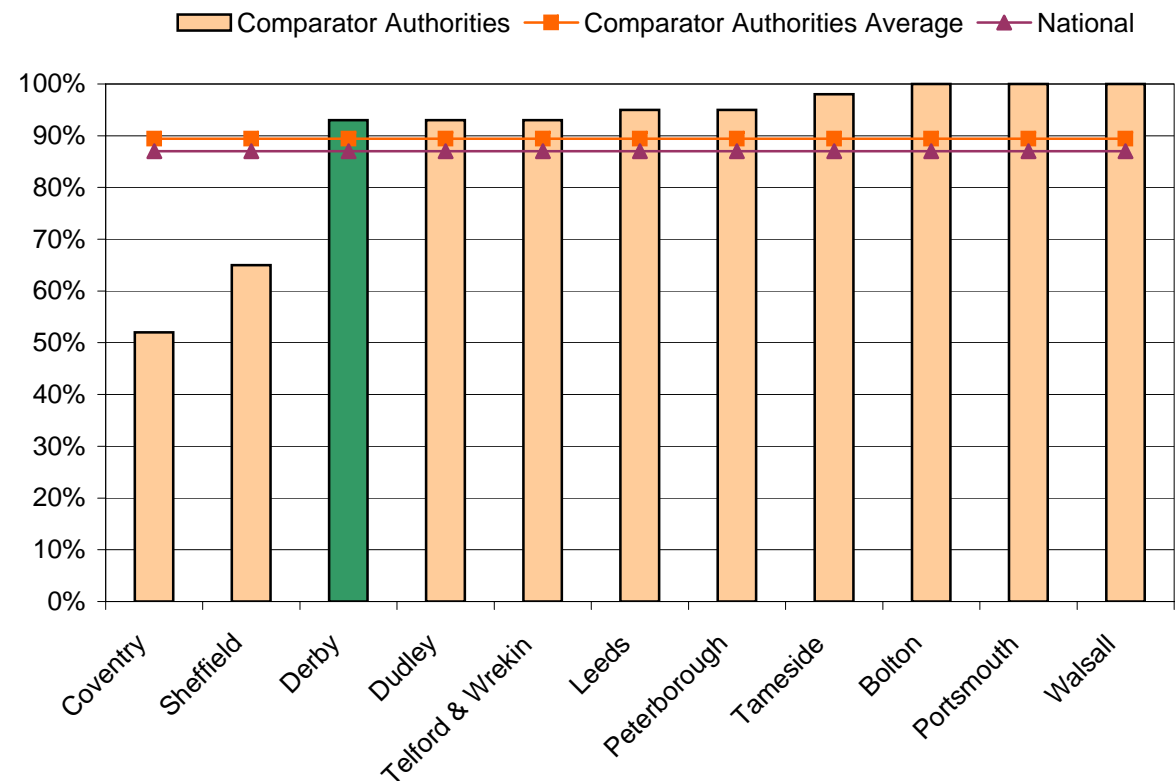


n/a = Not available due to small numbers

## Health Outcomes for looked after children

*Percentage of looked after children aged 5 or under whose development assessments checks are up-to-date as at 30/09/2008*

Comparator Authorities	Development Assessments
Coventry	52%
Sheffield	65%
<b>Derby</b>	<b>93%</b>
Dudley	93%
Telford & Wrekin	93%
Leeds	95%
Peterborough	95%
Tameside	98%
Bolton	100%
Portsmouth	100%
Walsall	100%
<b>Comparator Authorities Average</b>	<b>89%</b>
<b>National</b>	<b>87%</b>



n/a = Not available due to small numbers

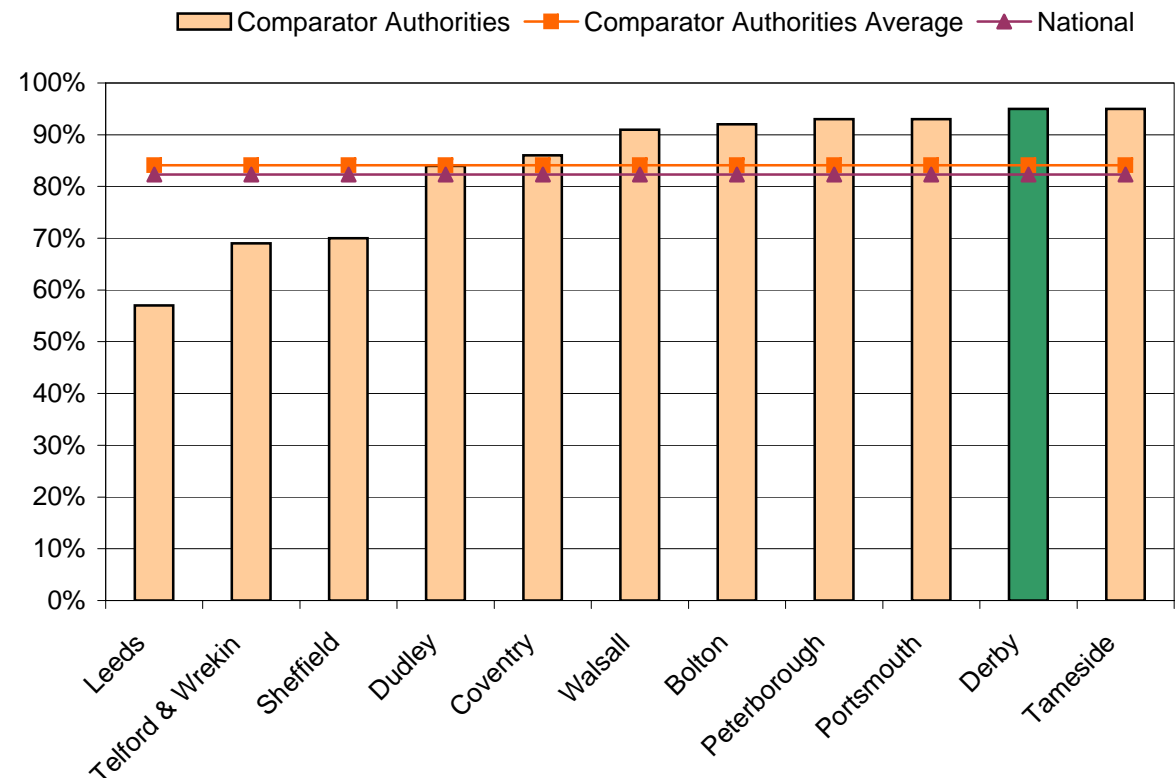
## Health Outcomes for looked after children

*Percentage of looked after children whose immunisations are up-to-date as at 30/09/2008*

Comparator Authorities	Immunisations
Leeds	57%
Telford & Wrekin	69%
Sheffield	70%
Dudley	84%
Coventry	86%
Walsall	91%
Bolton	92%
Peterborough	93%
Portsmouth	93%
<b>Derby</b>	<b>95%</b>
Tameside	95%

<b>Comparator Authorities Average</b>	<b>84%</b>
---------------------------------------	------------

<b>National</b>	<b>82%</b>
-----------------	------------

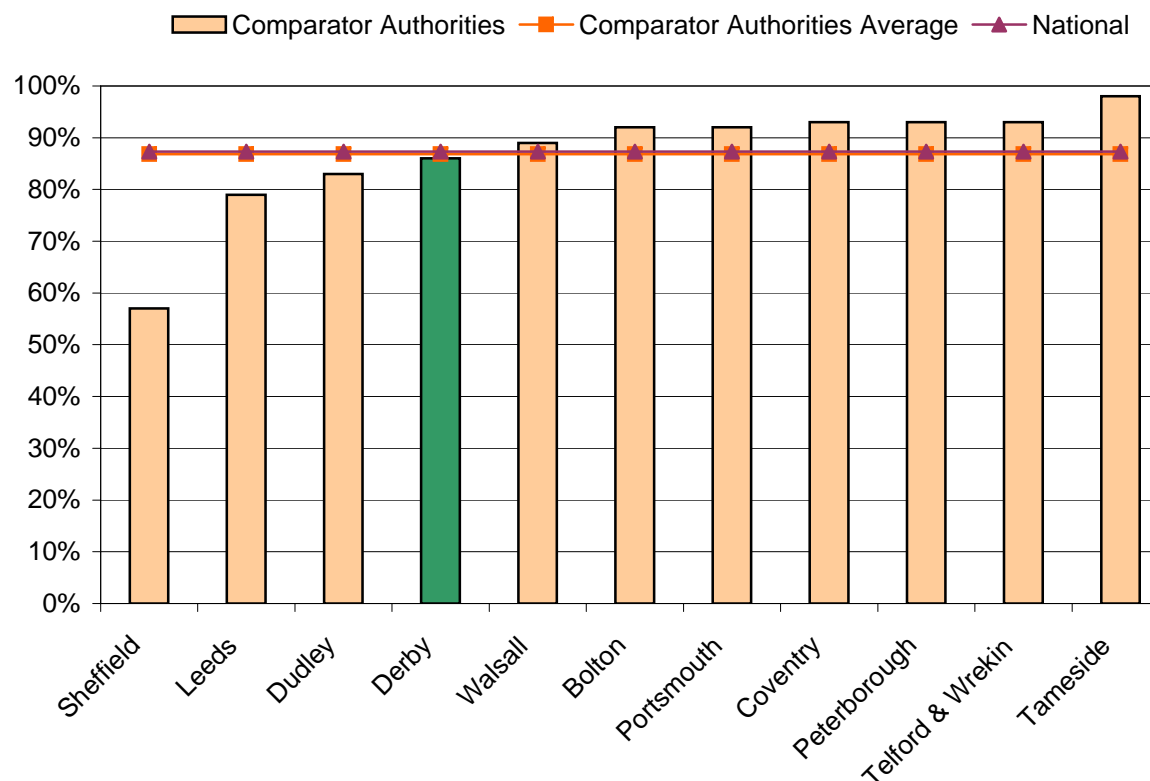


n/a = Not available due to small numbers

## Health Outcomes for looked after children

*Percentage of looked after children whose dental checks are up-to-date as at 30/09/2008*

Comparator Authorities	Dental Checks
Sheffield	57%
Leeds	79%
Dudley	83%
<b>Derby</b>	<b>86%</b>
Walsall	89%
Bolton	92%
Portsmouth	92%
Coventry	93%
Peterborough	93%
Telford & Wrekin	93%
Tameside	98%
<b>Comparator Authorities Average</b>	<b>87%</b>
<b>National</b>	<b>87%</b>



n/a = Not available due to small numbers

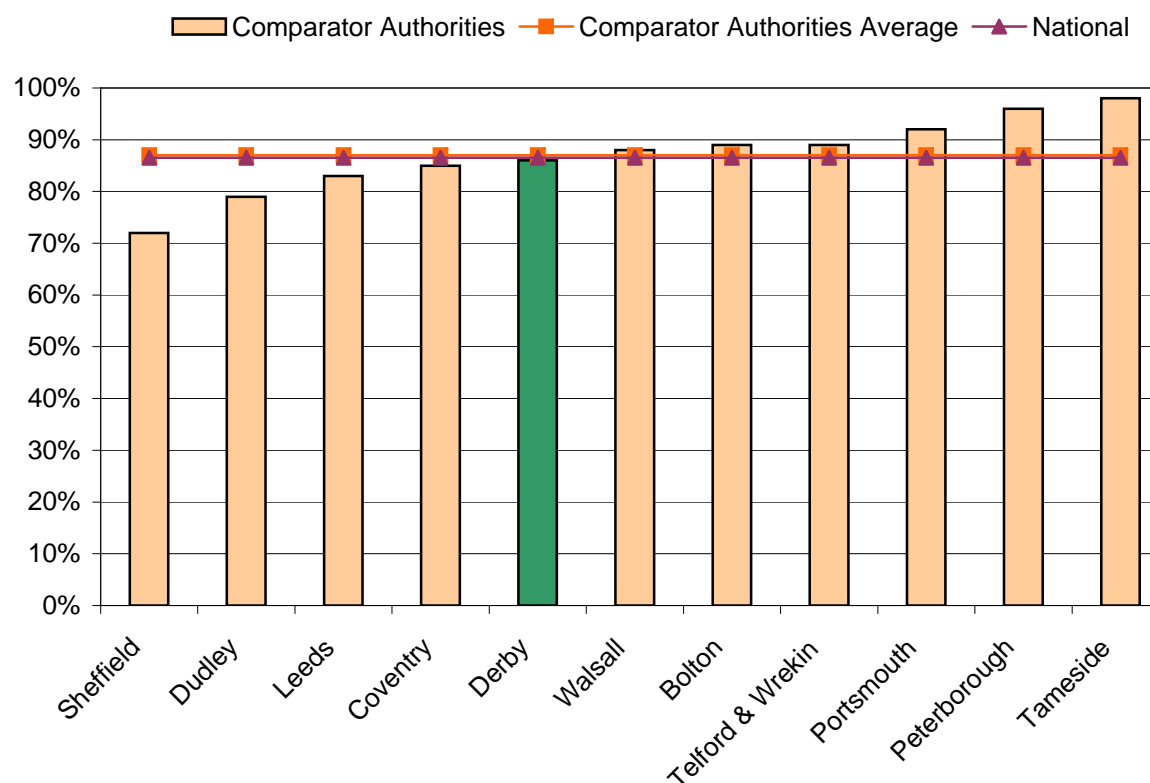
## Health Outcomes for looked after children

*Percentage of looked after children whose health assessments are up-to-date as at 30/09/2008*

Comparator Authorities	Health Assessments
Sheffield	72%
Dudley	79%
Leeds	83%
Coventry	85%
<b>Derby</b>	<b>86%</b>
Walsall	88%
Bolton	89%
Telford & Wrekin	89%
Portsmouth	92%
Peterborough	96%
Tameside	98%

<b>Comparator Authorities Average</b>	<b>87%</b>
---------------------------------------	------------

<b>National</b>	<b>87%</b>
-----------------	------------



n/a = Not available due to small numbers

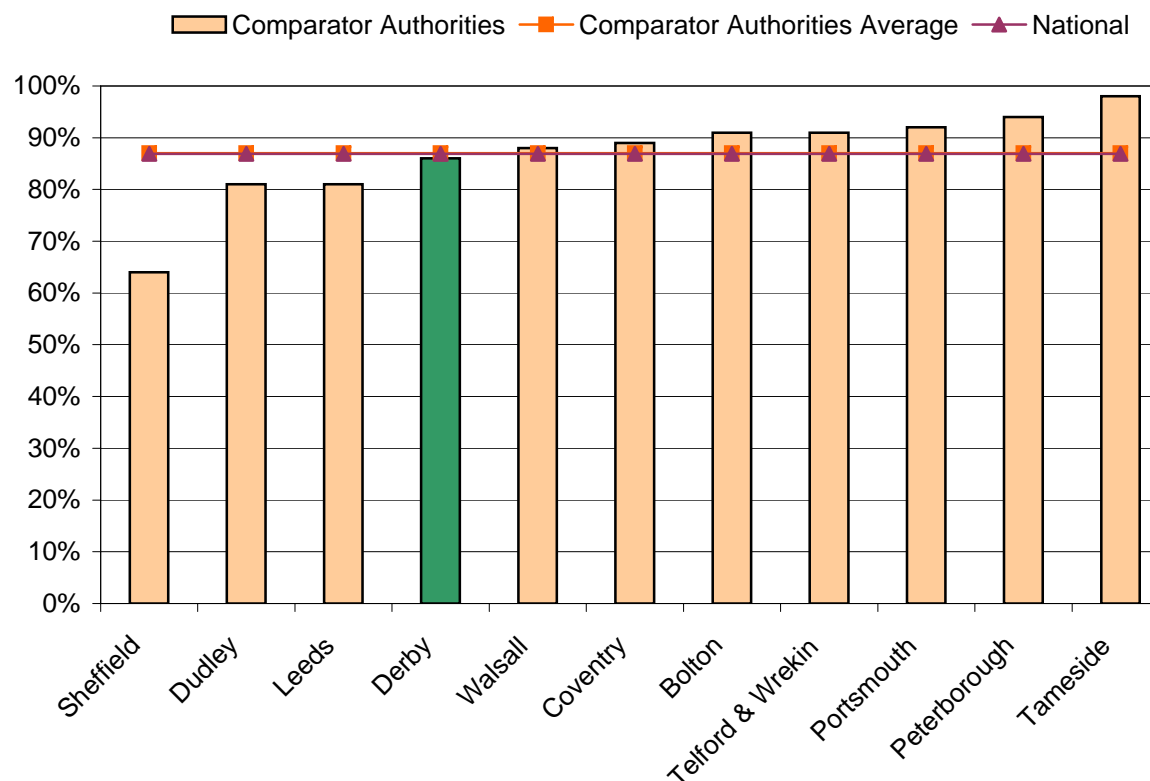
## Health Outcomes for looked after children

**PAF C19** - The average of the percentages of children looked after at 30 September who had been looked after continuously for at least 12 months, who had their teeth checked by a dentist during the previous 12 months, and had an annual health assessment during the previous 12 months. In previous years this indicator also included immunisations.

Comparator Authorities	PAF C19
Sheffield	64%
Dudley	81%
Leeds	81%
<b>Derby</b>	<b>86%</b>
Walsall	88%
Coventry	89%
Bolton	91%
Telford & Wrekin	91%
Portsmouth	92%
Peterborough	94%
Tameside	98%

<b>Comparator Authorities Average</b>	<b>87%</b>
---------------------------------------	------------

<b>National</b>	<b>87%</b>
-----------------	------------



n/a = Not available due to small numbers

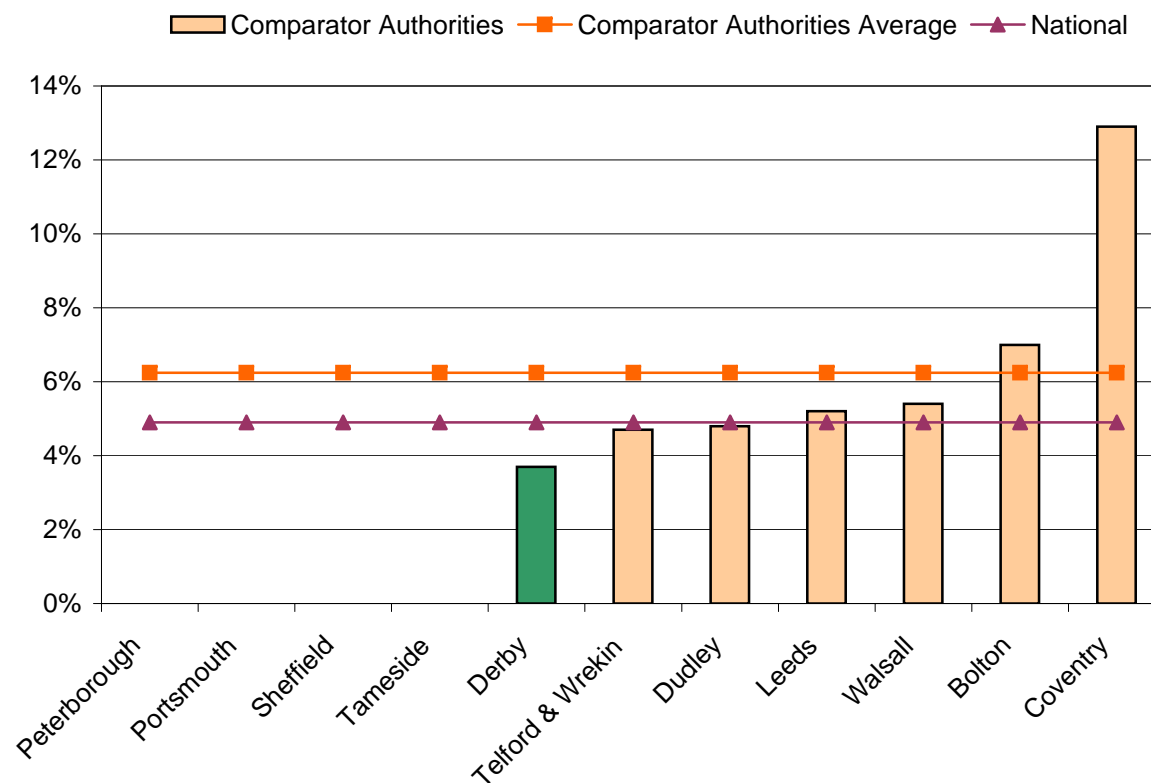
## Health Outcomes for looked after children

*Percentage of looked after children identified as having a substance misuse problem during the year as at 30/09/2008*

Comparator Authorities	Substance Misuse
Peterborough	n/a
Portsmouth	n/a
Sheffield	n/a
Tameside	n/a
<b>Derby</b>	<b>4%</b>
Telford & Wrekin	5%
Dudley	5%
Leeds	5%
Walsall	5%
Bolton	7%
Coventry	13%

<b>Comparator Authorities Average</b>	<b>6%</b>
---------------------------------------	-----------

<b>National</b>	<b>5%</b>
-----------------	-----------



n/a = Not available due to small numbers



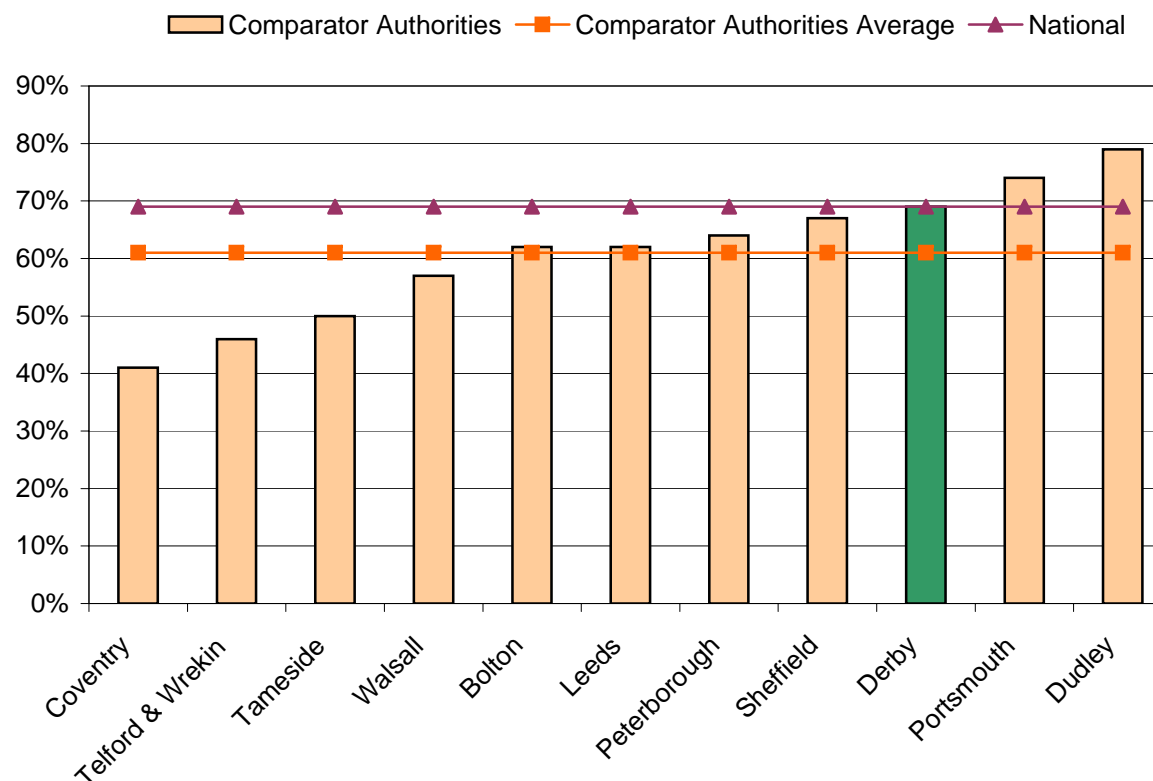
## Destinations for looked after children

*Percentage of looked after children in year 11 who have entered full time education as at 30/09/2008*

Comparator Authorities	Year 11 - full time education
Coventry	41%
Telford & Wrekin	46%
Tameside	50%
Walsall	57%
Bolton	62%
Leeds	62%
Peterborough	64%
Sheffield	67%
<b>Derby</b>	<b>69%</b>
Portsmouth	74%
Dudley	79%

<b>Comparator Authorities Average</b>	<b>61%</b>
---------------------------------------	------------

<b>National</b>	<b>69%</b>
-----------------	------------



n/a = Not available due to small numbers

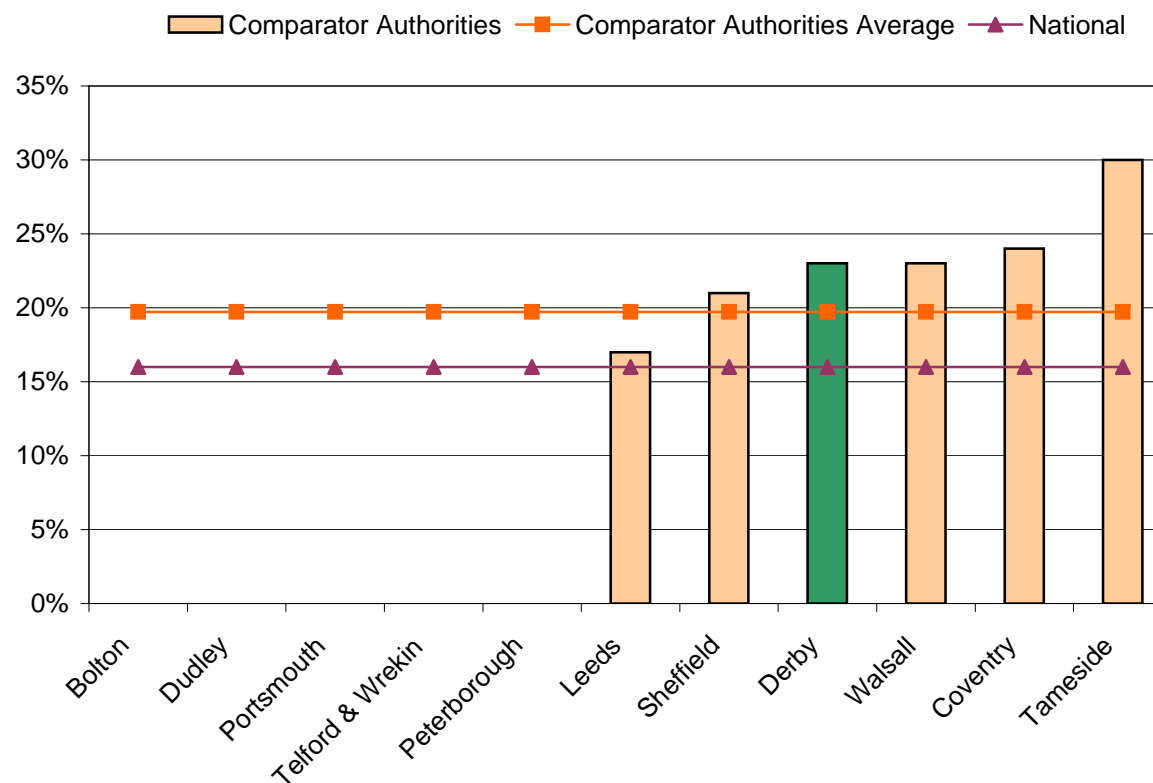
## Destinations for looked after children

*Percentage of looked after children in year 11 who have entered full time or part time employment or training as at 30/09/2008*

Comparator Authorities	Year 11 - training or employment
Bolton	n/a
Dudley	n/a
Portsmouth	n/a
Telford & Wrekin	n/a
Peterborough	0%
Leeds	17%
Sheffield	21%
<b>Derby</b>	<b>23%</b>
Walsall	23%
Coventry	24%
Tameside	30%

<b>Comparator Authorities Average</b>	<b>20%</b>
---------------------------------------	------------

<b>National</b>	<b>16%</b>
-----------------	------------



n/a = Not available due to small numbers

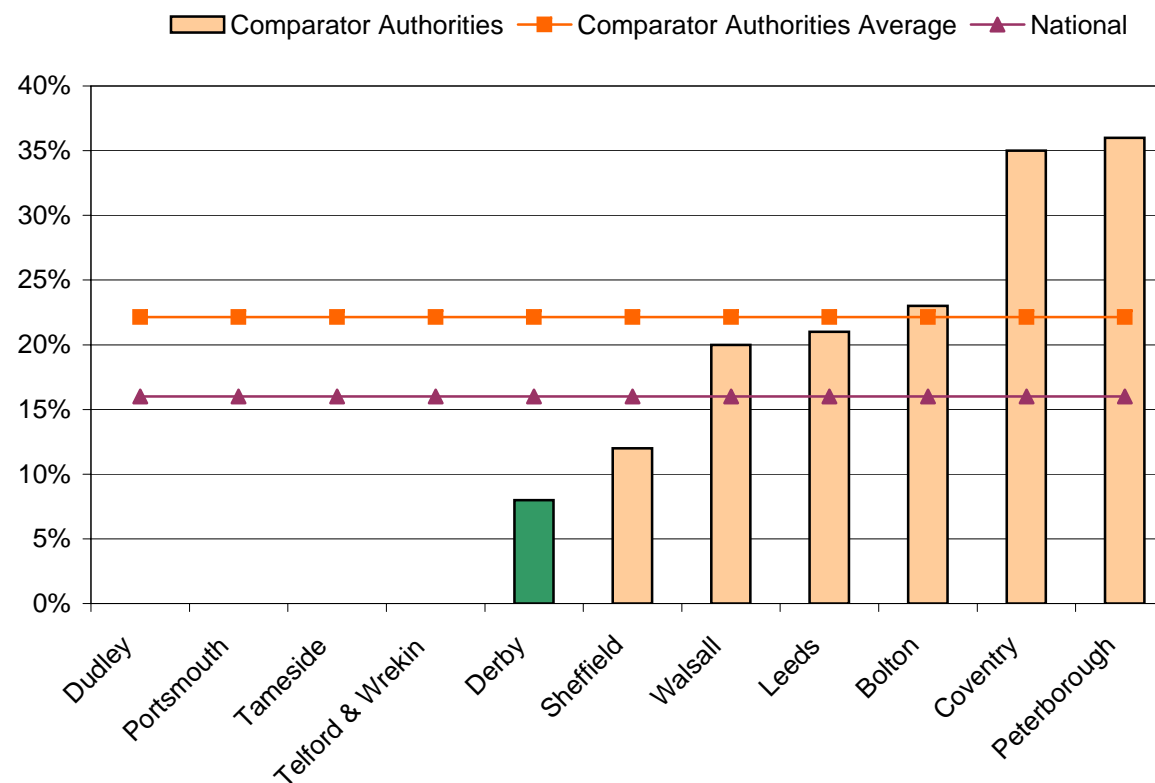
## Destinations for looked after children

*Percentage of looked after children in year 11 who were unemployed as at 30/09/2008*

Comparator Authorities	Year 11 - unemployed
Dudley	n/a
Portsmouth	n/a
Tameside	n/a
Telford & Wrekin	n/a
<b>Derby</b>	<b>8%</b>
Sheffield	12%
Walsall	20%
Leeds	21%
Bolton	23%
Coventry	35%
Peterborough	36%

<b>Comparator Authorities Average</b>	<b>22%</b>
---------------------------------------	------------

<b>National</b>	<b>16%</b>
-----------------	------------



n/a = Not available due to small numbers

## Children & Young People's Department Outcomes for Children Looked After (OC2 Return)



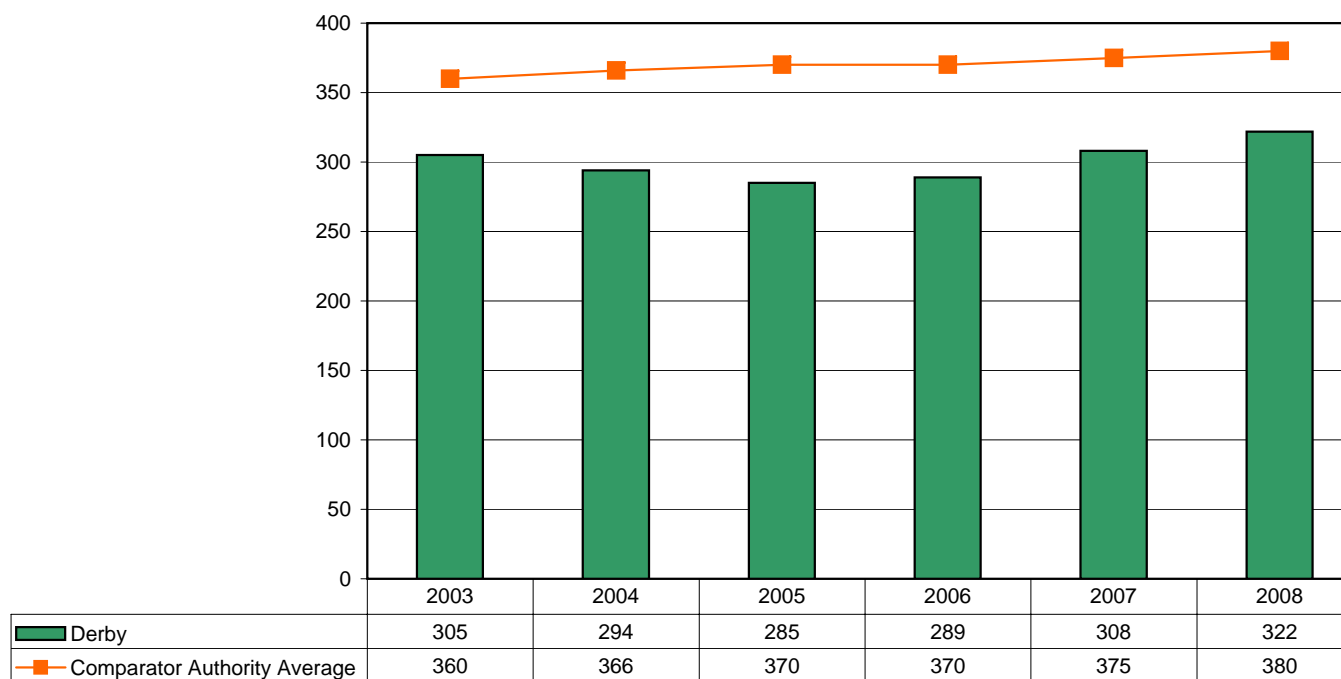
### National and Comparative Authority Comparison Trends Analysis 2003 - 2008

<b>Release Month</b>	June 2009
<b>For Activity Between</b>	September 2003 - September 2008
<b>Contact</b>	Alison Wood Children & Young People's Department Information Management Team 01332 716056 Alison.Wood2@derby.gov.uk

## Trends Analysis - Numbers of looked after children

*Number of looked after children who had been looked after for at least a year as at 30th September*

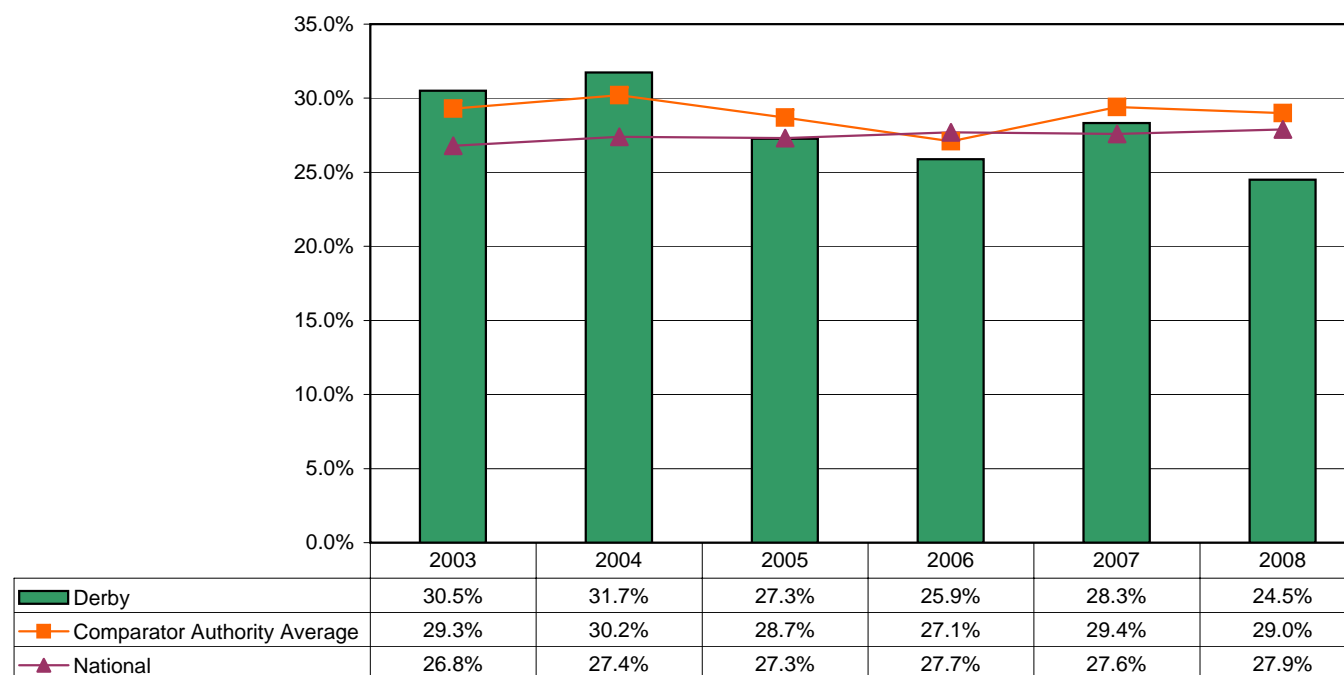
		2003	2004	2005	2006	2007	2008
Number of looked after children who had been looked after for at least a year	Derby	305	294	285	289	308	322
	Comparator Authority Average	360	366	370	370	375	380
	National	44900	45000	44700	44200	44200	43700



## Trends Analysis - General Education of looked after children

**Percentage of looked after children covered by a statement of special educational needs as at 30th September**

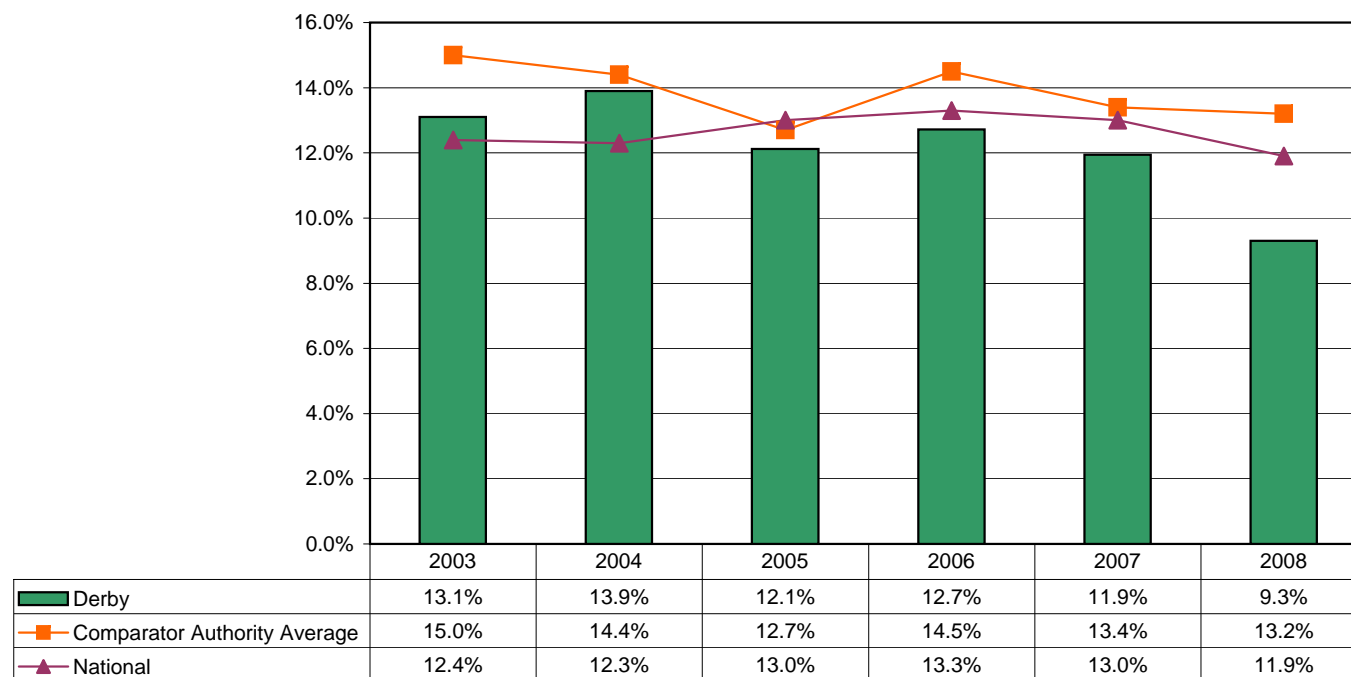
		2003	2004	2005	2006	2007	2008
Percentage of looked after children covered by a statement of special educational needs	Derby	30.5%	31.7%	27.3%	25.9%	28.3%	24.5%
	Comparator Authority Average	29.3%	30.2%	28.7%	27.1%	29.4%	29.0%
	National	26.8%	27.4%	27.3%	27.7%	27.6%	27.9%



## Trends Analysis - General Education of looked after children

**Percentage of looked after children missing at least 25 days from school for any reason as at 30th September**

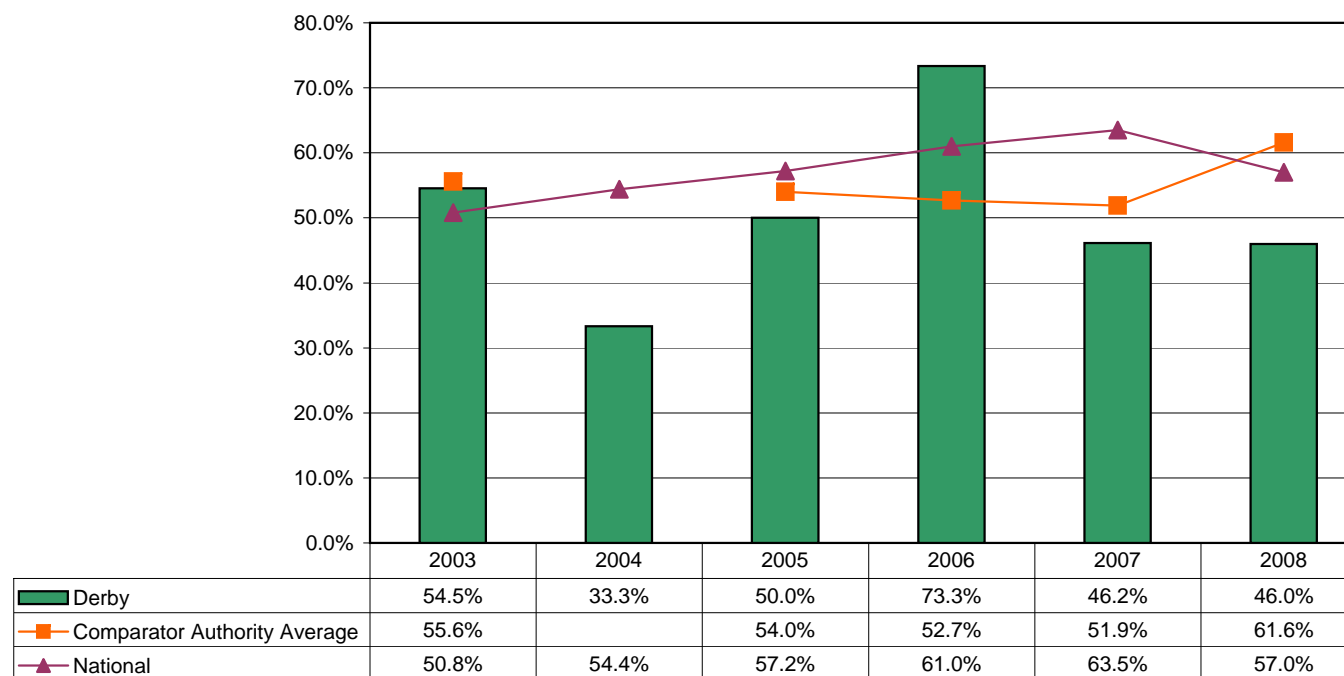
		2003	2004	2005	2006	2007	2008
Percentage of looked after children missing at least 25 days from school for any reason	Derby	13.1%	13.9%	12.1%	12.7%	11.9%	9.3%
	Comparator Authority Average	15.0%	14.4%	12.7%	14.5%	13.4%	13.2%
	National	12.4%	12.3%	13.0%	13.3%	13.0%	11.9%



## Trends Analysis - Key Stage One results of looked after children

*Percentage that achieved level 2 or above in the Reading task as at 30th September*

		2003	2004	2005	2006	2007	2008
Percentage that achieved level 2 or above in the Reading task	Derby	54.5%	33.3%	50.0%	73.3%	46.2%	46.0%
	Comparator Authority Average	55.6%		54.0%	52.7%	51.9%	61.6%
	National	50.8%	54.4%	57.2%	61.0%	63.5%	57.0%

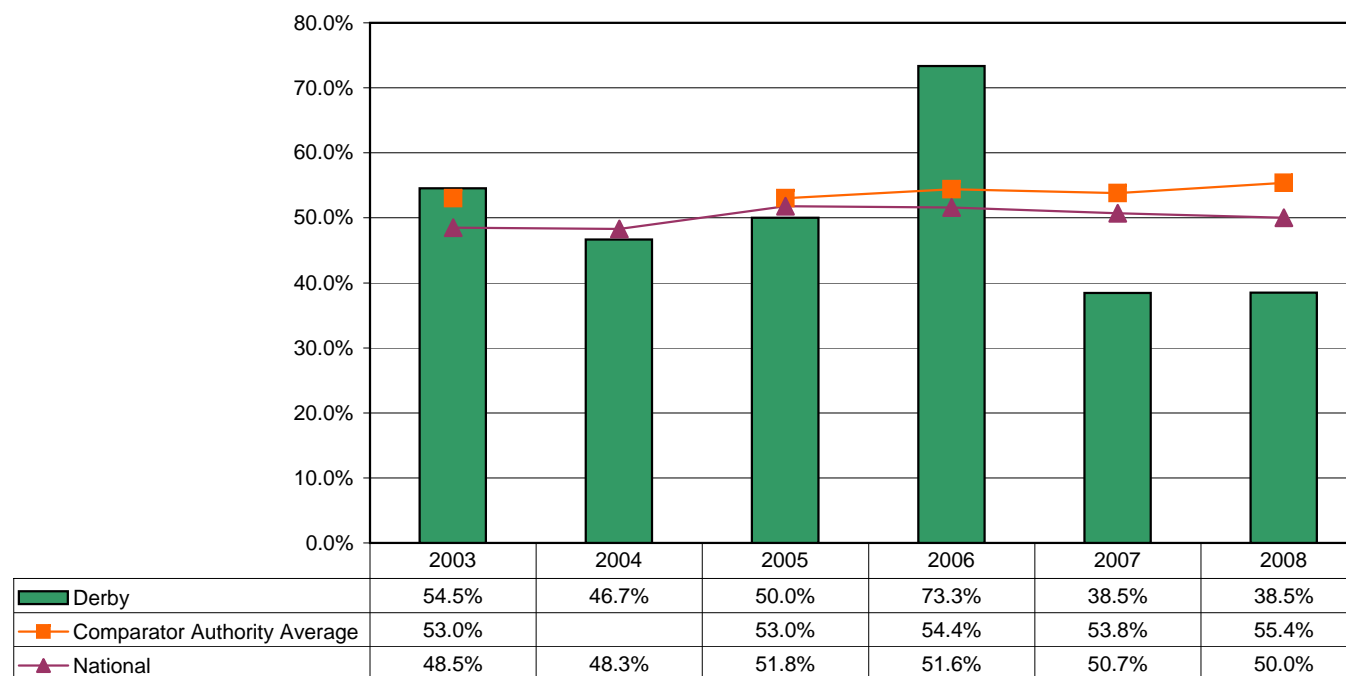




## Trends Analysis - Key Stage One results of looked after children

*Percentage that achieved level 2 or above in the Writing task as at 30th September*

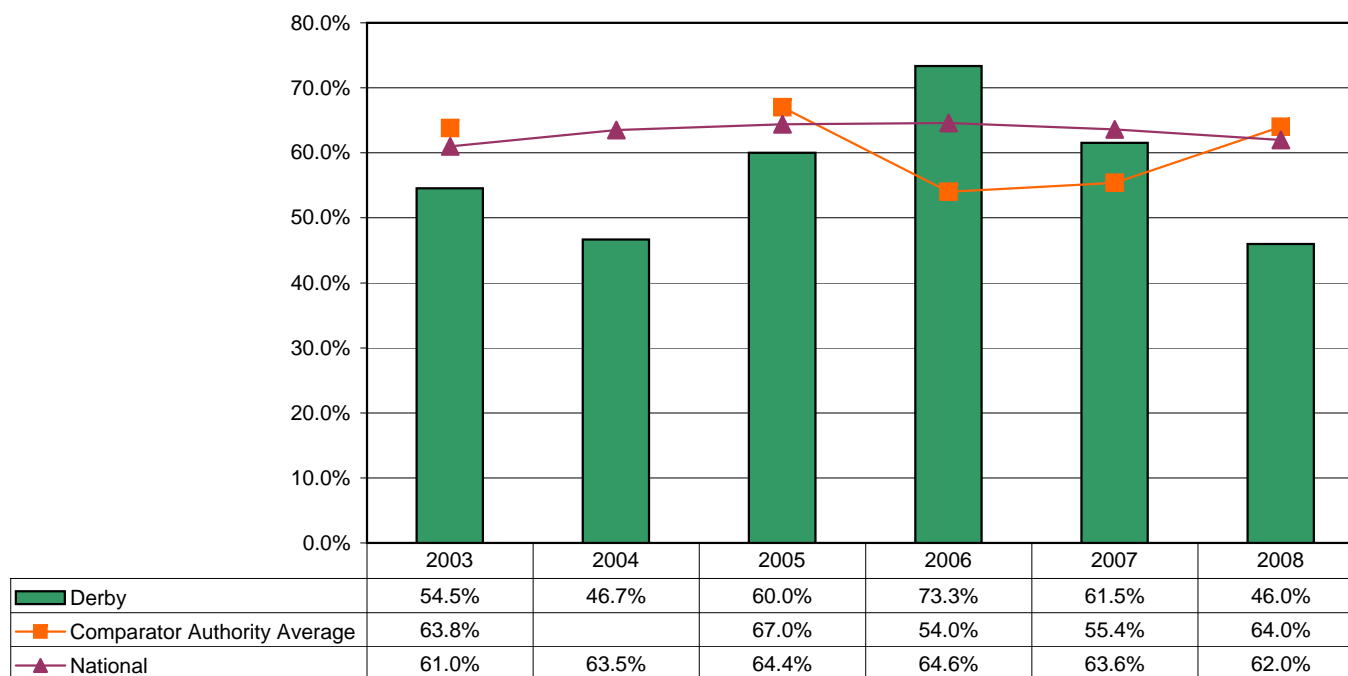
		2003	2004	2005	2006	2007	2008
Percentage that achieved level 2 or above in the Writing Task	Derby	54.5%	46.7%	50.0%	73.3%	38.5%	38.5%
	Comparator Authority Average	53.0%		53.0%	54.4%	53.8%	55.4%
	National	48.5%	48.3%	51.8%	51.6%	50.7%	50.0%



## Trends Analysis - Key Stage One results of looked after children

*Percentage that achieved level 2 or above in the Mathematics task as at 30th September*

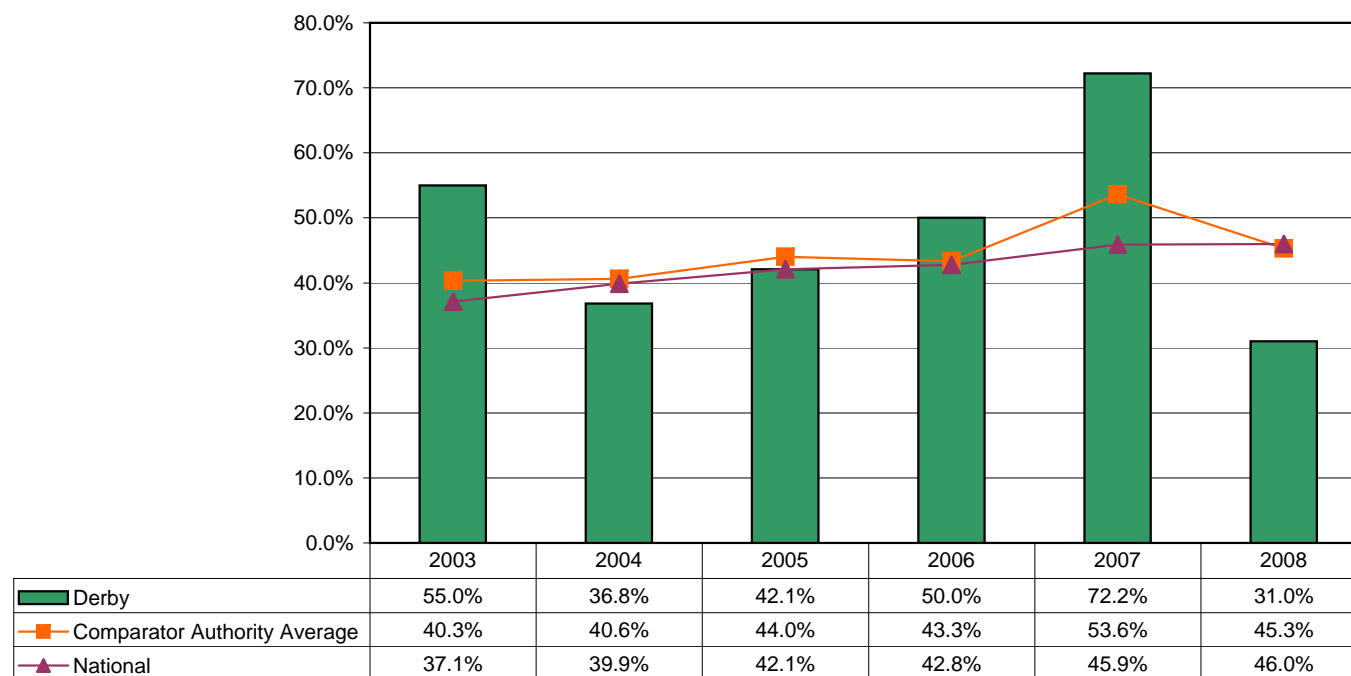
		2003	2004	2005	2006	2007	2008
Percentage that achieved level 2 or above in the Mathematics task	Derby	54.5%	46.7%	60.0%	73.3%	61.5%	46.0%
	Comparator Authority Average	63.8%		67.0%	54.0%	55.4%	64.0%
	National	61.0%	63.5%	64.4%	64.6%	63.6%	62.0%



## Trends Analysis - Key Stage Two results of looked after children

*Percentage that achieved level 4 or above in the English test as at 30th September*

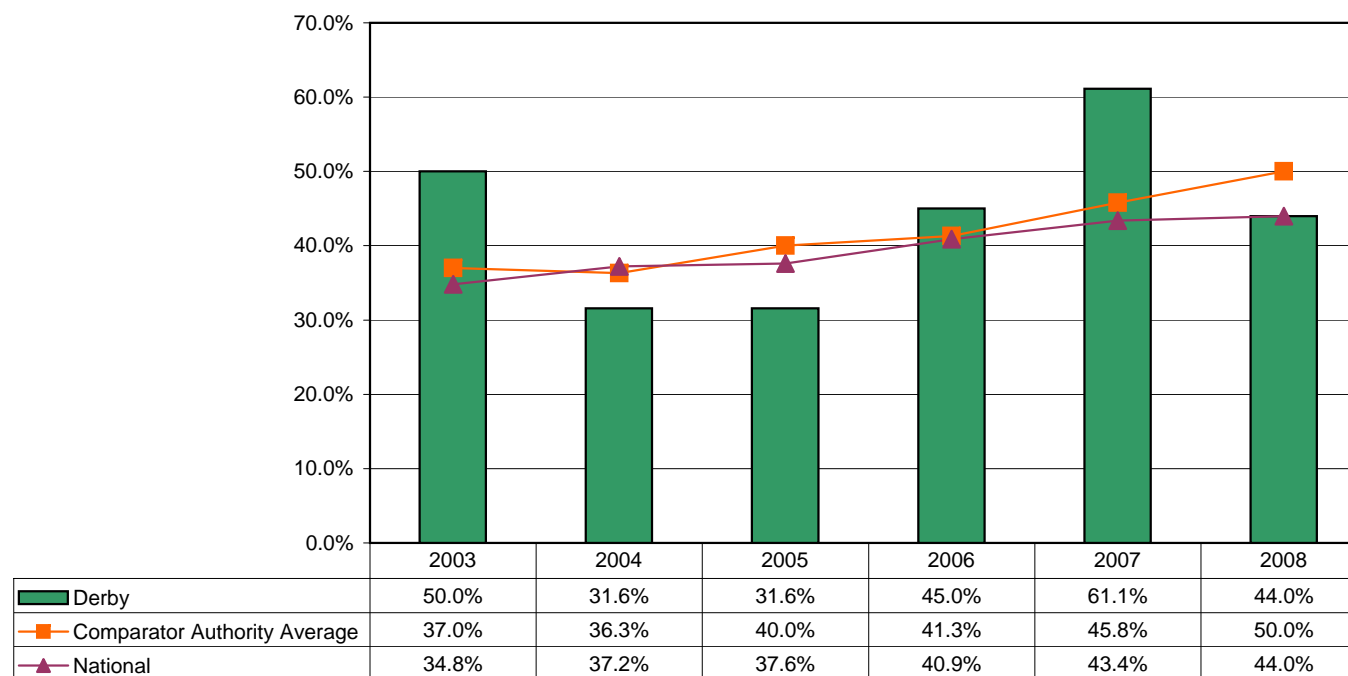
		2003	2004	2005	2006	2007	2008
Percentage that achieved level 4 or above in the English test	Derby	55.0%	36.8%	42.1%	50.0%	72.2%	31.0%
	Comparator Authority Average	40.3%	40.6%	44.0%	43.3%	53.6%	45.3%
	National	37.1%	39.9%	42.1%	42.8%	45.9%	46.0%



## Trends Analysis - Key Stage Two results of looked after children

*Percentage that achieved level 4 or above in the Mathematics test as at 30th September*

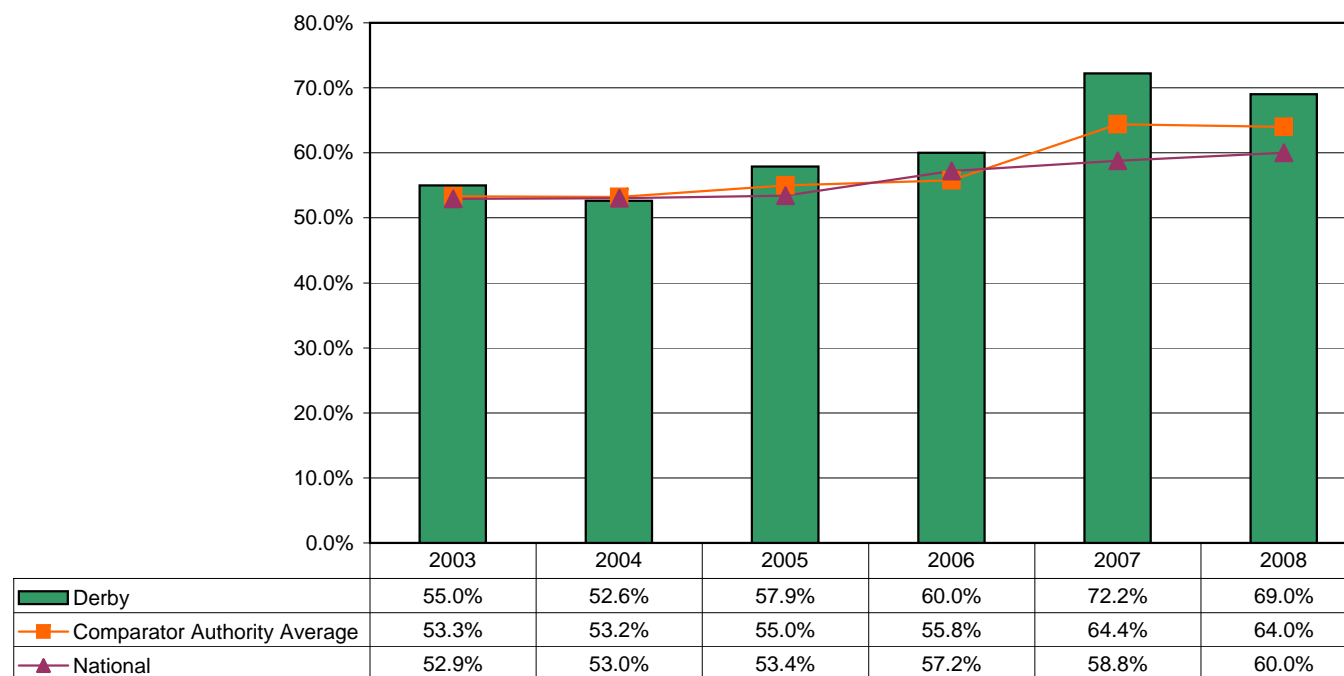
		2003	2004	2005	2006	2007	2008
Percentage that achieved level 4 or above in the Mathematics test	Derby	50.0%	31.6%	31.6%	45.0%	61.1%	44.0%
	Comparator Authority Average	37.0%	36.3%	40.0%	41.3%	45.8%	50.0%
	National	34.8%	37.2%	37.6%	40.9%	43.4%	44.0%



## Trends Analysis - Key Stage Two results of looked after children

*Percentage that achieved level 4 or above in the Science task as at 30th September*

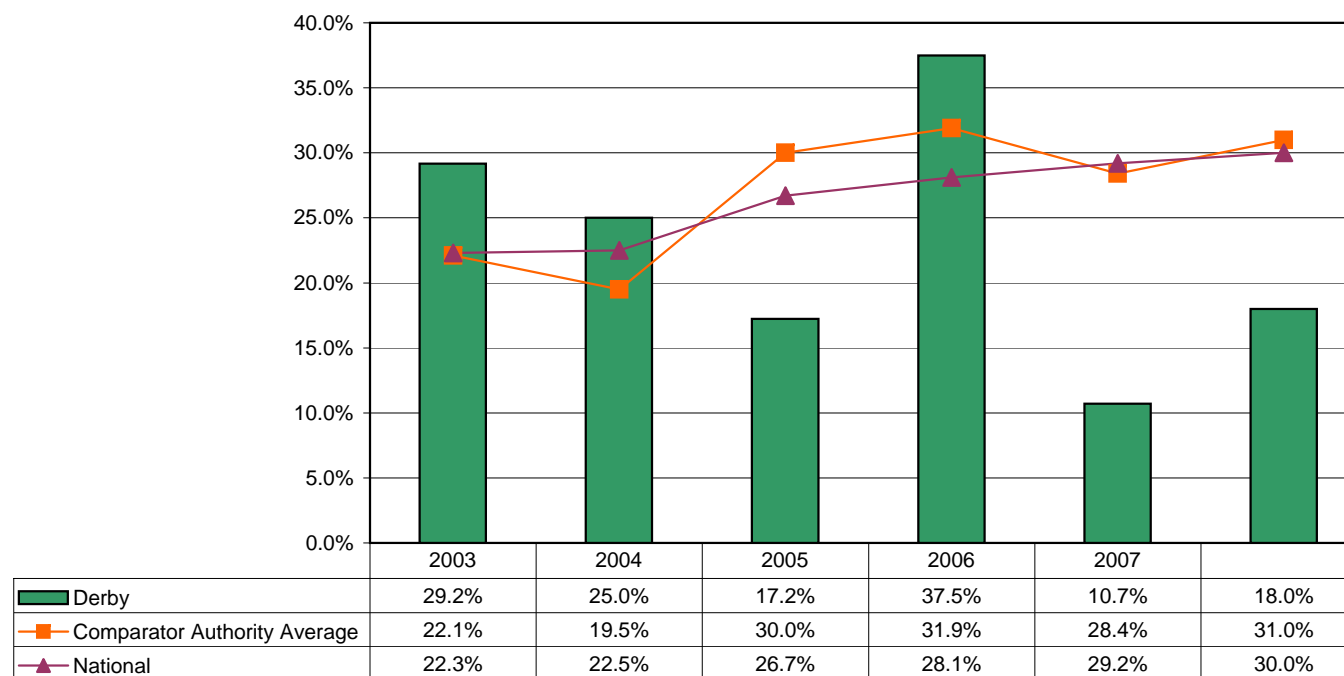
		2003	2004	2005	2006	2007	2008
Percentage that achieved level 4 or above in the Science test	Derby	55.0%	52.6%	57.9%	60.0%	72.2%	69.0%
	Comparator Authority Average	53.3%	53.2%	55.0%	55.8%	64.4%	64.0%
	National	52.9%	53.0%	53.4%	57.2%	58.8%	60.0%



## Trends Analysis - Key Stage Three results of looked after children

*Percentage that achieved level 5 or above in the English test as at 30th September*

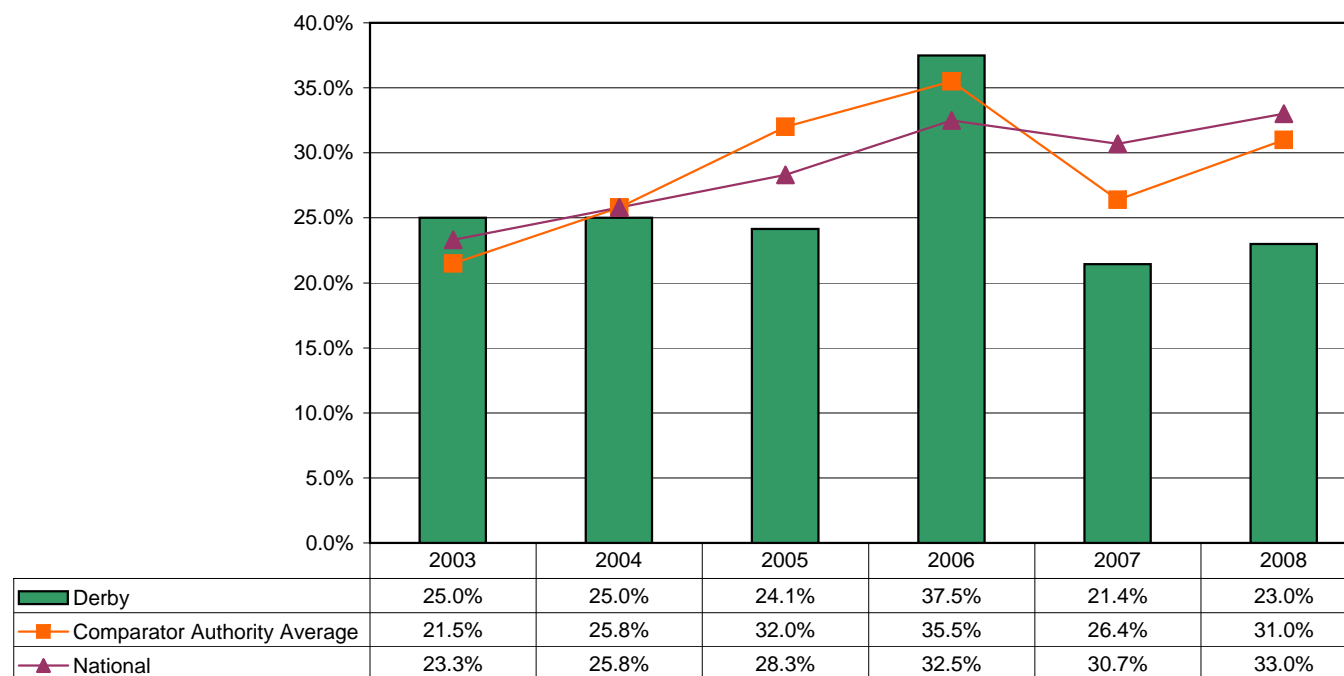
		2003	2004	2005	2006	2007	
Percentage that achieved level 5 or above in the English test	Derby	29.2%	25.0%	17.2%	37.5%	10.7%	18.0%
	Comparator Authority Average	22.1%	19.5%	30.0%	31.9%	28.4%	31.0%
	National	22.3%	22.5%	26.7%	28.1%	29.2%	30.0%



## Trends Analysis - Key Stage Three results of looked after children

*Percentage that achieved level 5 or above in the Mathematics test as at 30th September*

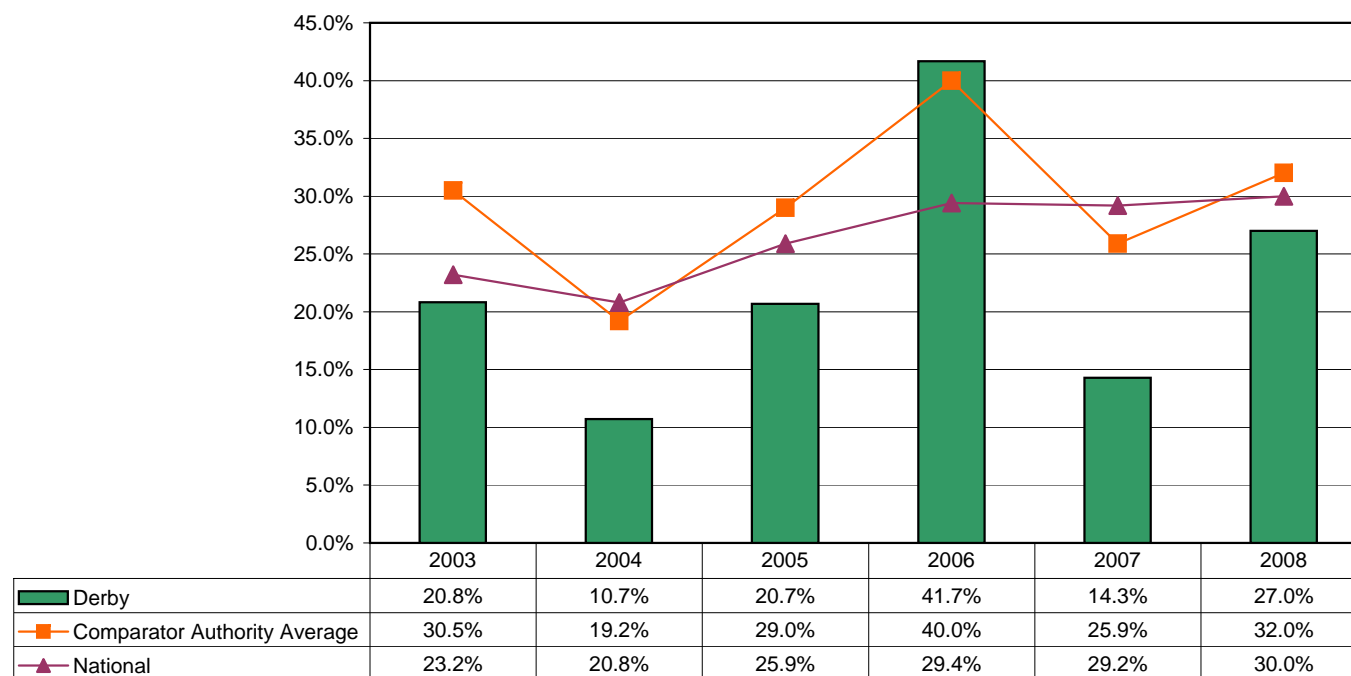
		2003	2004	2005	2006	2007	2008
Percentage that achieved level 5 or above in the Mathematics test	Derby	25.0%	25.0%	24.1%	37.5%	21.4%	23.0%
	Comparator Authority Average	21.5%	25.8%	32.0%	35.5%	26.4%	31.0%
	National	23.3%	25.8%	28.3%	32.5%	30.7%	33.0%



## Trends Analysis - Key Stage Three results of looked after children

*Percentage that achieved level 5 or above in the Science task as at 30th September*

		2003	2004	2005	2006	2007	2008
Percentage that achieved level 5 or above in the Science test	Derby	20.8%	10.7%	20.7%	41.7%	14.3%	27.0%
	Comparator Authority Average	30.5%	19.2%	29.0%	40.0%	25.9%	32.0%
	National	23.2%	20.8%	25.9%	29.4%	29.2%	30.0%

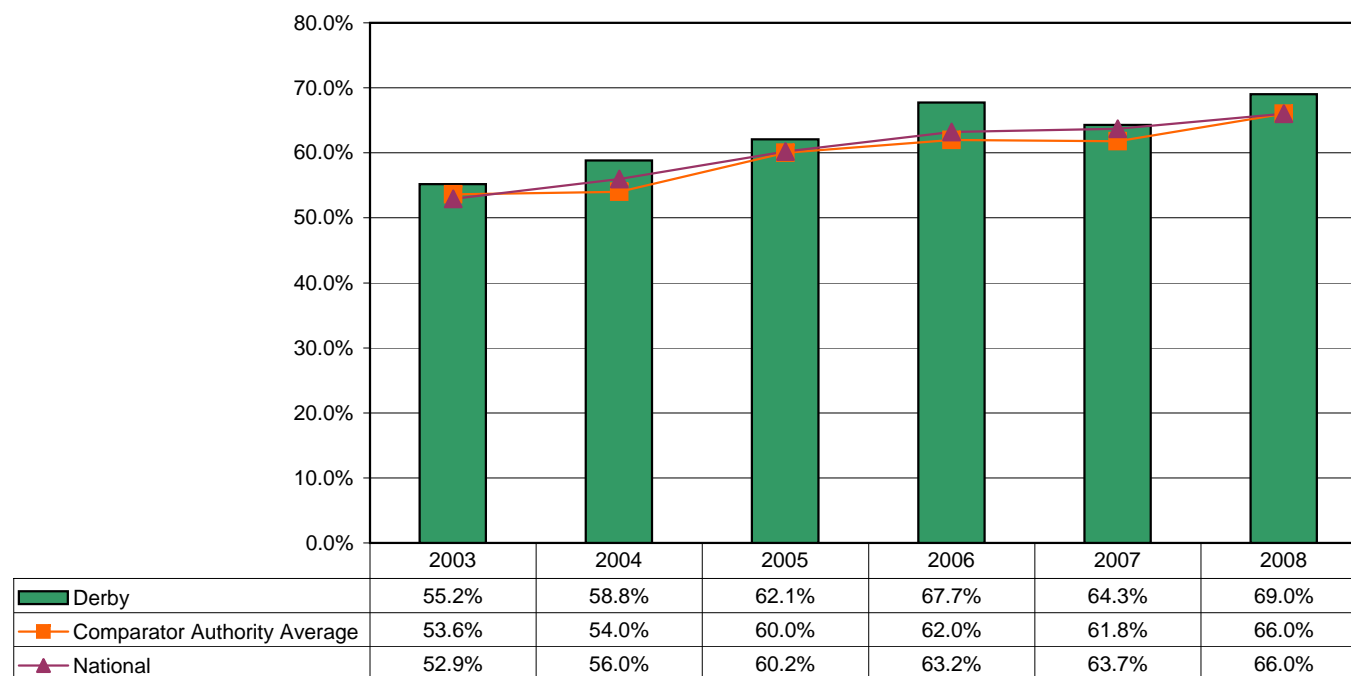




## Trends Analysis - GCSE results of looked after children

*Percentage that obtained at least 1 GCSE (or GNVQ equivalent) at Grade A\* to G as at 30th September*

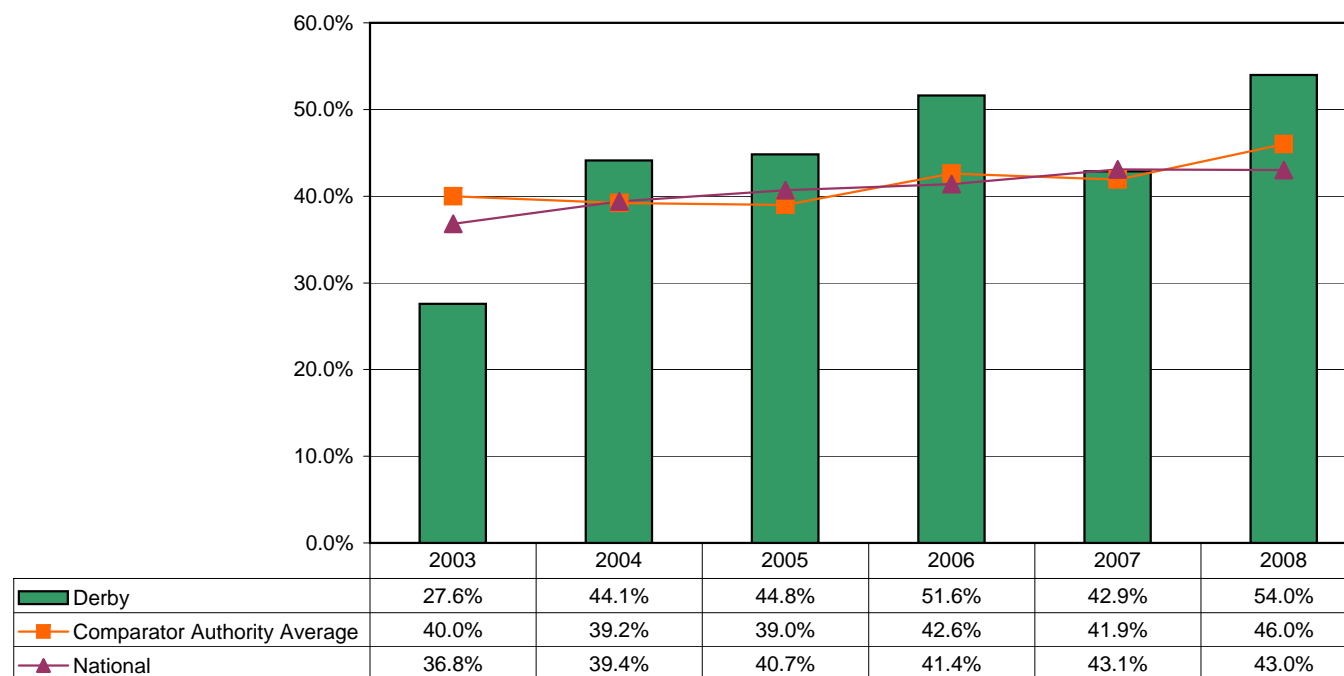
		2003	2004	2005	2006	2007	2008
Percentage that obtained at least 1 GCSE (or GNVQ equivalent) at Grade A* to G	Derby	55.2%	58.8%	62.1%	67.7%	64.3%	69.0%
	Comparator Authority Average	53.6%	54.0%	60.0%	62.0%	61.8%	66.0%
	National	52.9%	56.0%	60.2%	63.2%	63.7%	66.0%



## Trends Analysis - GCSE results of looked after children

**Percentage that obtained at least 5 GCSE'S (or GNVQ equivalent) at Grade A\* to G as at 30th September**

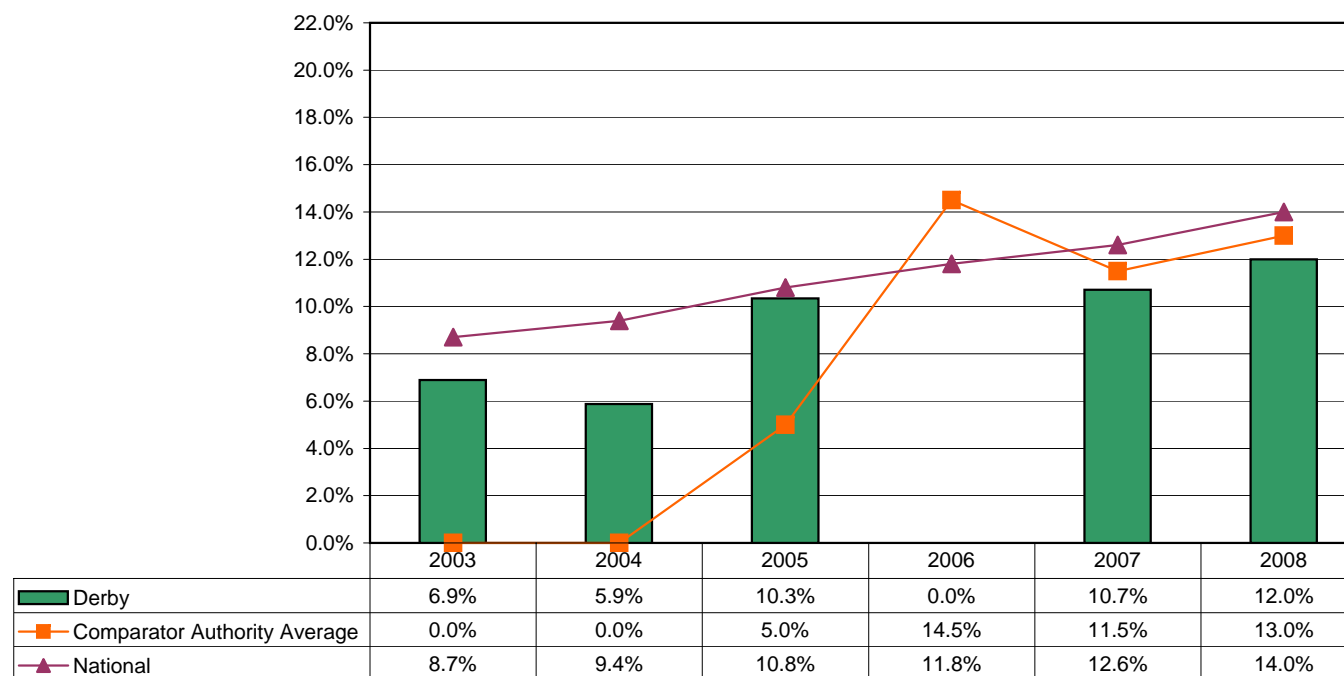
		2003	2004	2005	2006	2007	2008
Percentage that obtained at least 5 GCSE'S (or GNVQ equivalent) at Grade A* to G	Derby	27.6%	44.1%	44.8%	51.6%	42.9%	54.0%
	Comparator Authority Average	40.0%	39.2%	39.0%	42.6%	41.9%	46.0%
	National	36.8%	39.4%	40.7%	41.4%	43.1%	43.0%



## Trends Analysis - GCSE results of looked after children

*Percentage that obtained at least 5 GCSE'S (or GNVQ equivalent) at Grade A\* to C as at 30th September*

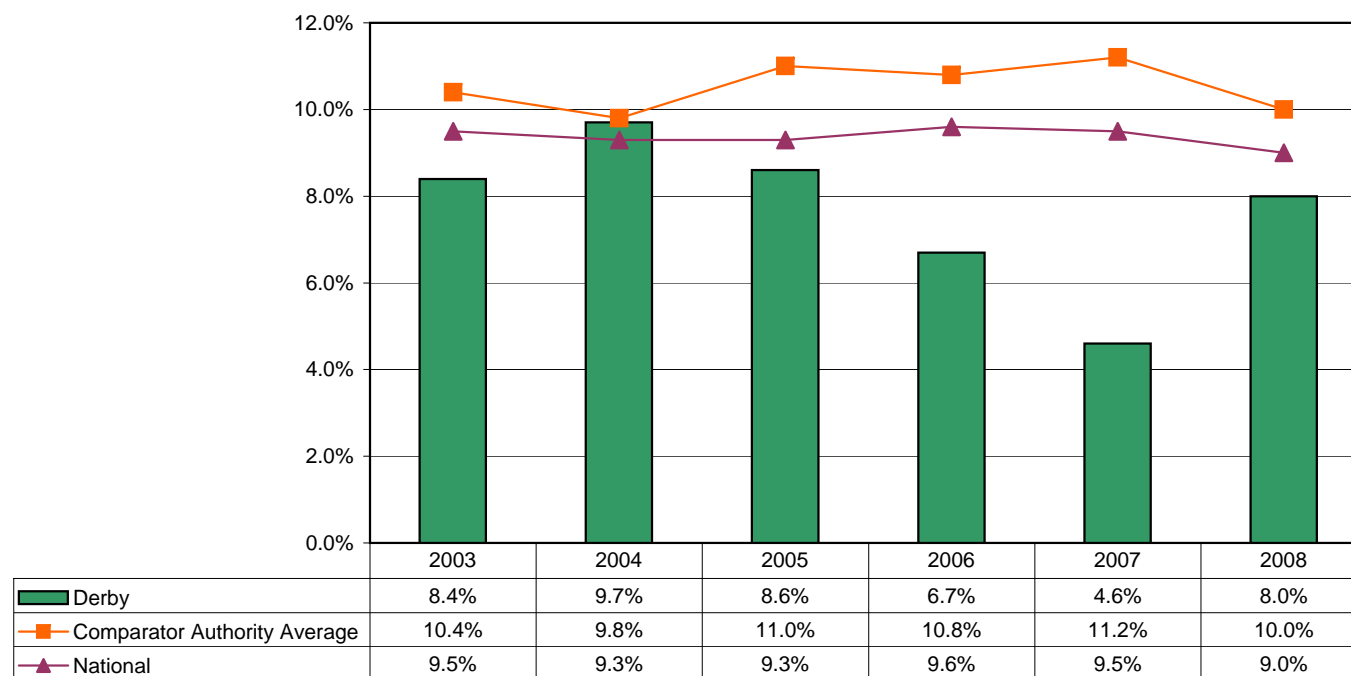
		2003	2004	2005	2006	2007	2008
Percentage that obtained at least 5 GCSE'S (or GNVQ equivalent) at Grade A* to C	Derby	6.9%	5.9%	10.3%	0.0%	10.7%	12.0%
	Comparator Authority Average	n/a	0.0%	5.0%	14.5%	11.5%	13.0%
	National	8.7%	9.4%	10.8%	11.8%	12.6%	14.0%



## Trends Analysis - Cautions and Convictions of looked after children

**Percentage of looked after children aged 10 or over cautioned or convicted during the year as at 30th September**

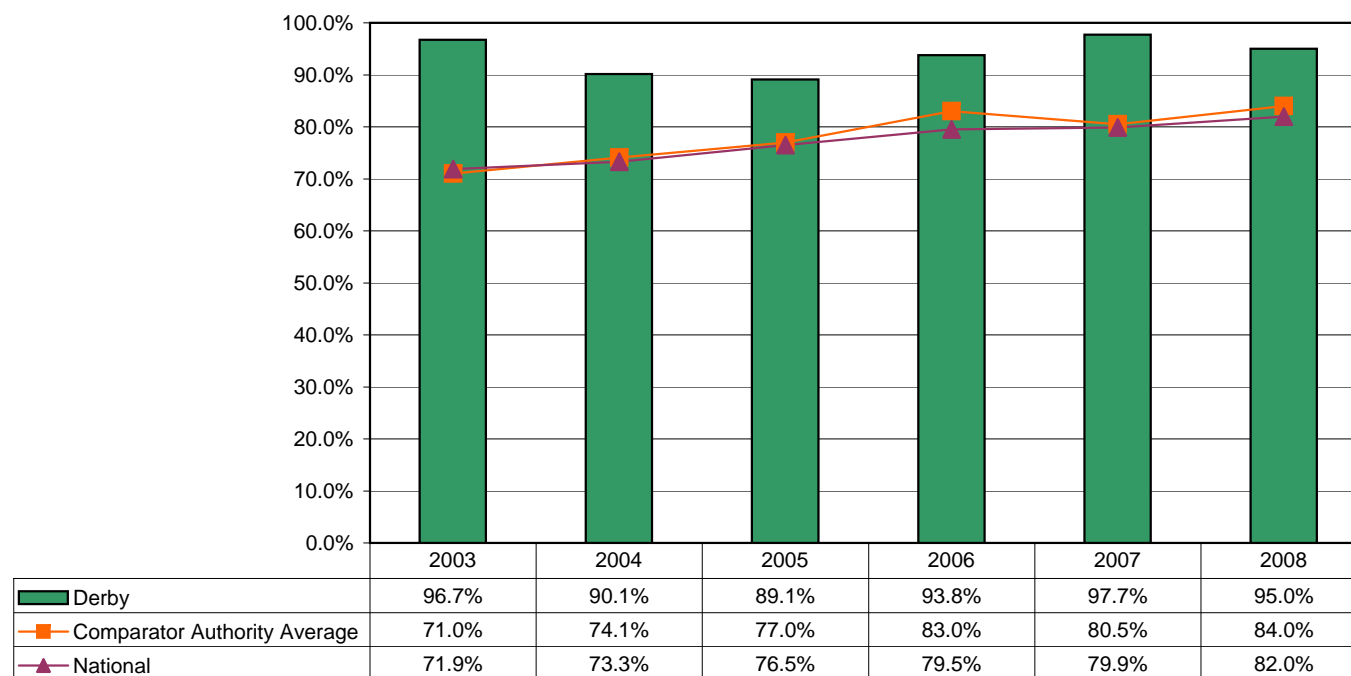
		2003	2004	2005	2006	2007	2008
Percentage convicted or subject to a final warning or reprimand during the year	Derby	8.4%	9.7%	8.6%	6.7%	4.6%	8.0%
	Comparator Authority Average	10.4%	9.8%	11.0%	10.8%	11.2%	10.0%
	National	9.5%	9.3%	9.3%	9.6%	9.5%	9.0%



## Trends Analysis - Health Outcomes of looked after children

*Percentage of looked after children whose immunisations were up-to-date as at 30th September*

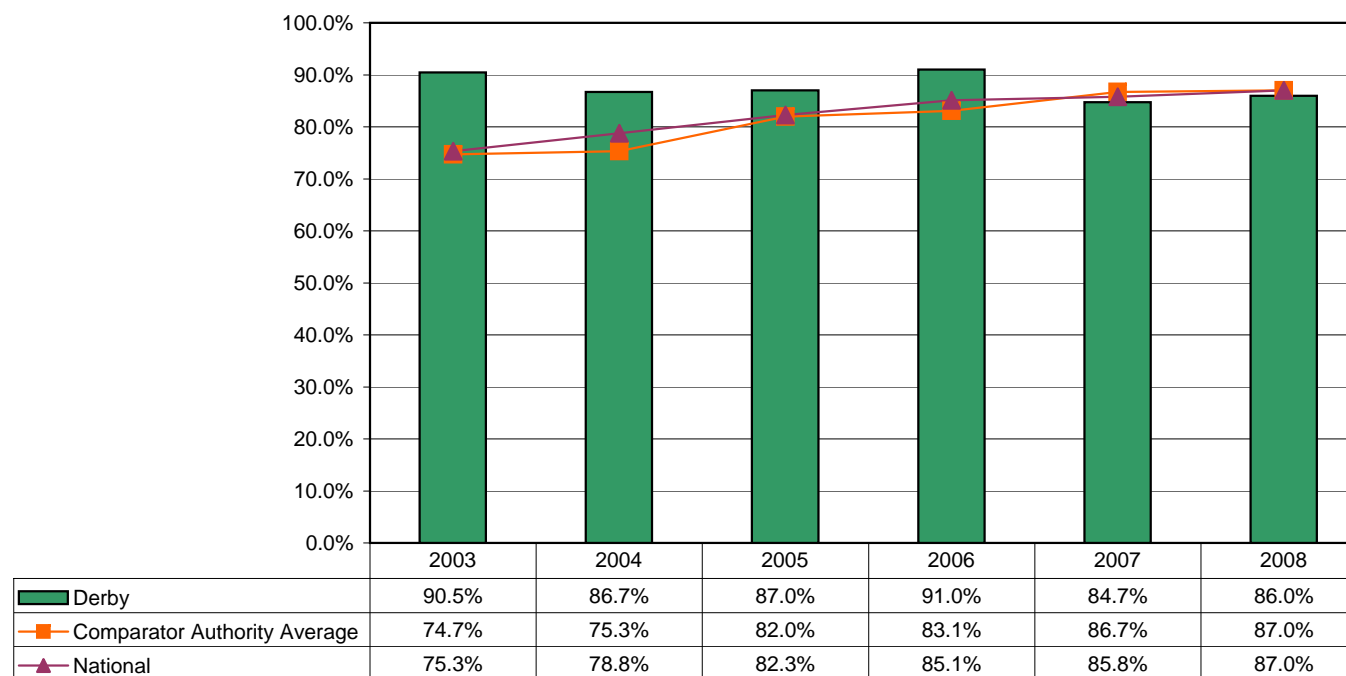
		2003	2004	2005	2006	2007	2008
Percentage of looked after children whose immunisations were up-to-date	Derby	96.7%	90.1%	89.1%	93.8%	97.7%	95.0%
	Comparator Authority Average	71.0%	74.1%	77.0%	83.0%	80.5%	84.0%
	National	71.9%	73.3%	76.5%	79.5%	79.9%	82.0%



## Trends Analysis - Health Outcomes of looked after children

### Percentage of looked after children whose dental checks were up-to-date as at 30th September

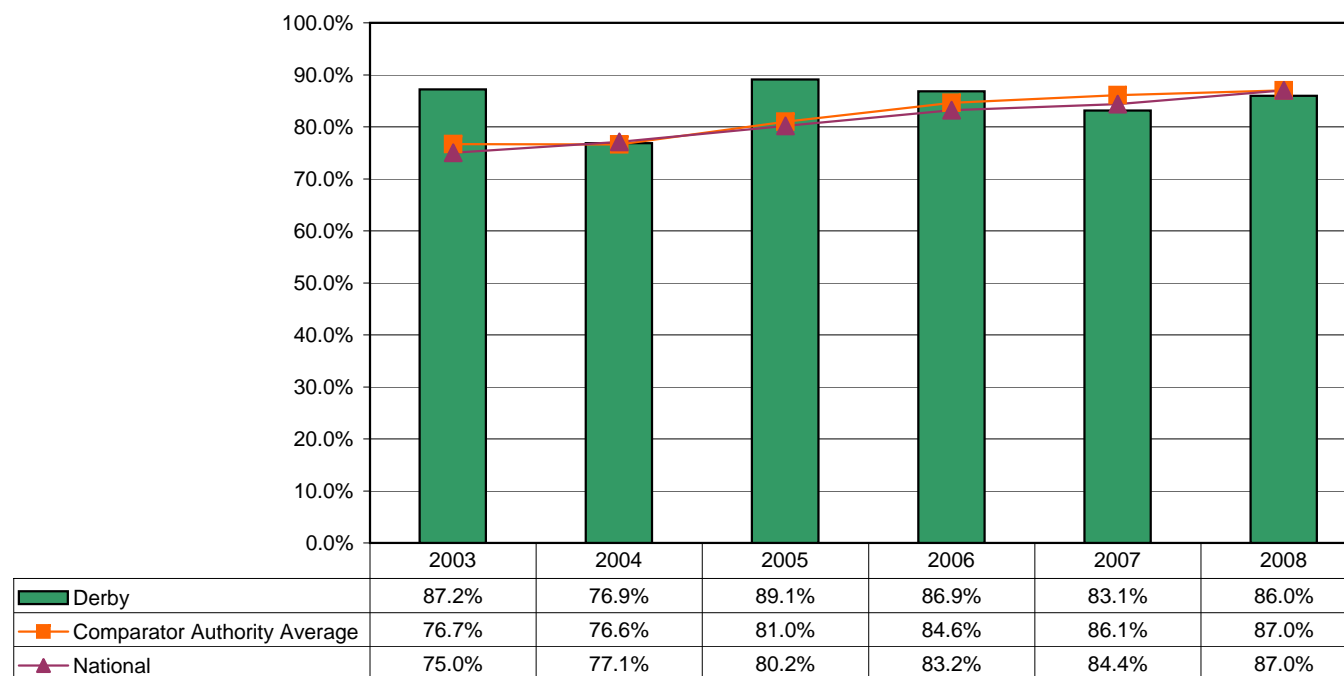
		2003	2004	2005	2006	2007	2008
Percentage of looked after children whose dental checks were up-to-date	Derby	90.5%	86.7%	87.0%	91.0%	84.7%	86.0%
	Comparator Authority Average	74.7%	75.3%	82.0%	83.1%	86.7%	87.0%
	National	75.3%	78.8%	82.3%	85.1%	85.8%	87.0%



## Trends Analysis - Health Outcomes of looked after children

*Percentage of looked after children whose health assessments were up-to-date as at 30th September*

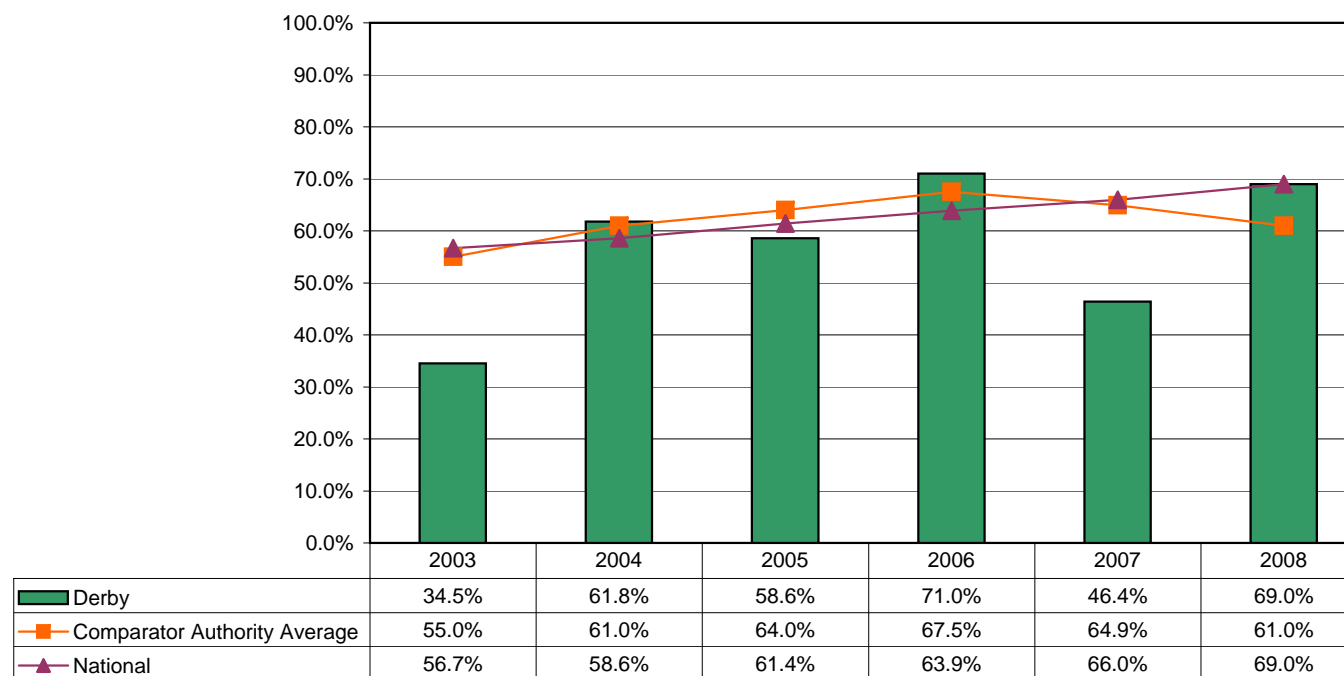
		2003	2004	2005	2006	2007	2008
Percentage of looked after children whose health assessments were up-to-date	Derby	87.2%	76.9%	89.1%	86.9%	83.1%	86.0%
	Comparator Authority Average	76.7%	76.6%	81.0%	84.6%	86.1%	87.0%
	National	75.0%	77.1%	80.2%	83.2%	84.4%	87.0%



## Trends Analysis - Destinations of looked after children

*Percentage of looked after children in year 11 who entered full time education as at 30th September*

		2003	2004	2005	2006	2007	2008
Percentage of looked after children in year 11 who entered full time education	Derby	34.5%	61.8%	58.6%	71.0%	46.4%	69.0%
	Comparator Authority Average	55.0%	61.0%	64.0%	67.5%	64.9%	61.0%
	National	56.7%	58.6%	61.4%	63.9%	66.0%	69.0%

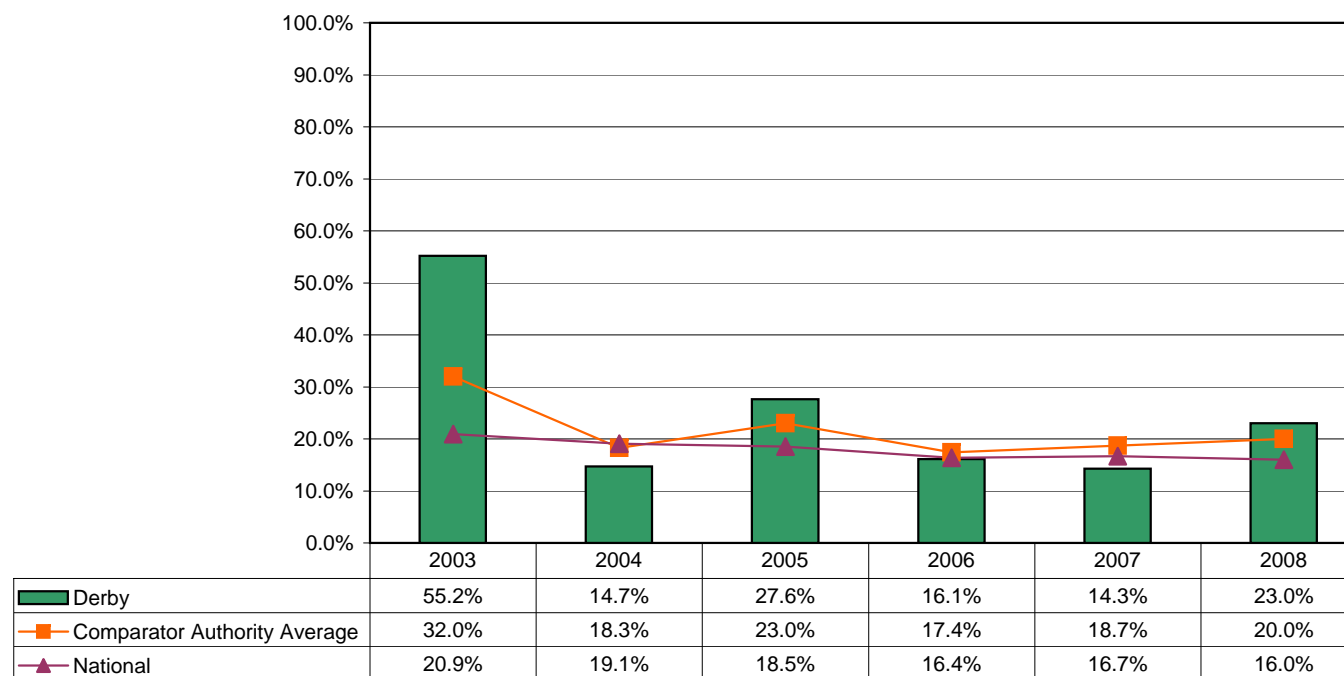




## Trends Analysis - Destinations of looked after children

**Percentage of looked after children in year 11 who entered full time or part time employment or training as at 30th September**

		2003	2004	2005	2006	2007	2008
Percentage of looked after children in year 11 who entered full time or part time employment or training	Derby	55.2%	14.7%	27.6%	16.1%	14.3%	23.0%
	Comparator Authority Average	32.0%	18.3%	23.0%	17.4%	18.7%	20.0%
	National	20.9%	19.1%	18.5%	16.4%	16.7%	16.0%



## Trends Analysis - Destinations of looked after children

*Percentage of looked after children in year 11 who were unemployed as at 30th September*

		2003	2004	2005	2006	2007	2008
Percentage of looked after children in year 11 who were unemployed	Derby	10.3%	23.5%	13.8%	12.9%	39.3%	8.0%
	Comparator Authority Average	34.0%	32.0%	19.0%	26.2%	24.5%	22.0%
	National	22.4%	22.2%	20.0%	19.7%	17.2%	16.0%

