



City for Children and Young People



Children's Trust

2011-2014

Consultation

1. Introduction

Who is this document for?

This is a consultation document for organisations working in the planning, commissioning and delivery of services for children and young people in Derby.

It sets out proposals for partnership arrangements in Derby in relation to services for children and young people from April 2011.

The proposals outlined in the document are being made in response to a number of significant changes expected at both national and local levels, including:

- removal of the statutory requirement for a Children's Trust Board
- removal of the statutory requirement for a Children and Young People's Plan
- new 2026 Vision for Derby and supporting Sustainable Community Strategy
- review of the structure of Derby City Partnership

Many of these changes are on-going and it is important that any new proposals are flexible enough to cope with more significant developments in the future that will impact on the activity of the children's trust.

Responses should be returned by Friday 12 November to:

Maris Stratulis

Derby City Council Children and Young People's Department

Middleton House

St Mary's Gate

Derby

DE1 3NN

E-mail: maris.stratulis@derby.gov.uk

Telephone: 01332 711245

2. What is Derby's Children's Trust?

Derby Children's Trust is the elements of all those partner organisations whose work is integral to the delivery of services for children, young people and their families and carers across Derby.

3. What is its function?

Derby Children's Trust has responsibility for delivering improved outcomes against common priorities identified for children and young people through evidence of need, strategic planning, performance monitoring and commissioning.

4. Vision for Derby's Children's Trust 2011-14

Children, young people and families in Derby will be...safe, healthy and happy with opportunities to achieve their full potential

5. Priorities for Derby's Children's Trust 2011-14

Derby Children:

- 1. are safe and healthy**
- 2. will achieve more**

6. Will the Trust target their activity?

The vision and priorities are for all children and young people in Derby but the focus for the Children's Trust is on vulnerable groups and children in need, particularly:

- to protect children and young people
- to target early intervention safeguarding vulnerable children and young people
- those who are not achieving at Key Stage 2
- those not in education, employment or training as they leave school and enter adult life 16-25 years
- As corporate parents we have total responsibility for all the outcomes of our children in care and custody.

7. What outcomes will be achieved?

The Children's Trust will deliver the following outcomes for the vulnerable children and young people in Derby identified above.

They will:

- be safe, happy and well cared for
- have well informed, confident parents and carers
- grow up in safe homes which are supportive and ensure stability
- be physically, emotionally and sexually healthy
- access learning at the earliest opportunity
- attend school and enjoy their learning
- be confident, curious and resilient learners
- have high aspirations and ambition
- obtain skills, qualifications and self-esteem
- become successful working adults.

8. How will the Trust deliver the vision?

This decision will now be made at a local level as we no longer have to have a formal Children's Trust Board but we do need a strong strategic local partnership that will take responsibility for the monitoring of outcomes for children and challenge the performance of our partnership when we are not doing as well as we should

Other current local changes include the development of a 2026 vision for Derby through Derby City Partnership and a new 2011-2014 Sustainable Community Strategy. The

structure of the Partnership is likely to change, including the current 'city' groups. However, it is important that there is a clear link to children's priorities.

9. What will Derby's Children's Trust look like?

The Children's Trust structure must identify, lead and deliver the partnership commissioning priorities for children and young people beyond March 2011 and implement a robust delivery plan through the creation and implementation of joint commissioning arrangements.

a) What organisations will be involved?

This will not be an exclusive club and is open to all commissioners and providers of children services across Derby, however in order to effect change and deliver the outcomes agreed there must be commitment from the organisations and they will have to demonstrate the following:

- value for money
- innovation
- appropriate relationships and contacts
- ability to respond quickly to policy change
- affordability in line with the Comprehensive Spending Review
- flexibility and be ready to change any configuration
- delivery of something, if you don't have a clear role you don't have a place at the table

b) Who will lead Derby's Children's Trust?

The current Executive will be wound up and a new leadership group will be established known as the Children's Trust Board. It will be the responsible representative group and will include:

- Local Authority Strategic Director for Children and Young People
- Strategic Lead Commissioner in the Local Authority and Health
- Clinical lead for children's health services
- Public Health representative
- Chair of Local Safeguarding Children Board
- Elected member with the children and young people's portfolio (chair)
- Chair of Children and Young People's Scrutiny Commission
- Chair of the Children and Young People's Network
- Community Safety Partnership Representative(s)
- Finance leads – multiple members from various organisations

Other statutory services including police, housing etc

c) What are the functions of the Children's Trust Board and its responsibilities?

- Strong leadership externally and in their own organisation to drive priorities for children and young people.
- Working together to safeguard children and young people
- Strategic approach to understanding the effectiveness of current services, and identifying need, priorities for change – including services where services need to be improved, re-shaped or developed
- To work within an integrated commissioning framework to commission and deliver children's services based on need and impact

- Members have the authority to allocate resources and make strategic decisions
- To lead on the development of integrated and effective arrangements for change
- To achieve measurable improvements in the lives of children across agreed priority outcomes, particularly to address inequalities for children from disadvantaged backgrounds and their peers
- To develop, publish, monitor and review a Partnership Children and Young People's Commissioning Plan that feeds into the vision and priorities of the Sustainable Community Strategy
- To ensure all partners adopt the priorities in the commissioning plan
- To identify, allocate and align/pool resources from their organisations to deliver the commissioning plan
- To assess and manage risk as the sponsor for strategic areas
- To seek, listen and act upon the views of children, young people, their families and carers in Derby to inform decision making and service delivery
- To have a strategic oversight and keep informed of the work of other related partnerships working with children and young people
- To manage, evaluate and challenge performance and embed scrutiny

For Safeguarding

- To understand and use constructive challenge to and from the LSCB to drive service improvement.
- Statutory responsibilities of DCS, Cabinet lead, LA Chief Executive etc remain – must be assured that LSCB is holding agencies to account. Statutory requirement for Board remains
- To provide challenge to strategic leadership and commissioning function

For Joint Commissioning

- Robust commissioning leadership
- Identify and agree partnership commissioning priorities
- Identify pooled resources and to commission services efficiently with targets for improved outcomes
- Integrated management of performance and risk
- To monitor and review evidenced based outcomes for children and young people
- To de-commission services that 'do not make a difference'

For Stakeholder Engagement

- Engage wider group of stakeholders in identification of need
- Actively listen to what stakeholders are telling us
- To seek, listen and act upon the views of children, young people, their families and carers in Derby.
- To provide challenge
- Internal and external stakeholder to be involved in the evaluation and challenge of performance and hold the strategic leadership to account
- To seek, listen and act upon the views of children, young people, their families and carers in Derby.

To Young People

- Demonstrate they have been actively engaged in decision making
- Enable the participation of children in care (statutory responsibility)

To Providers

- Influence and shape the market to support the development of efficient and effective

services.

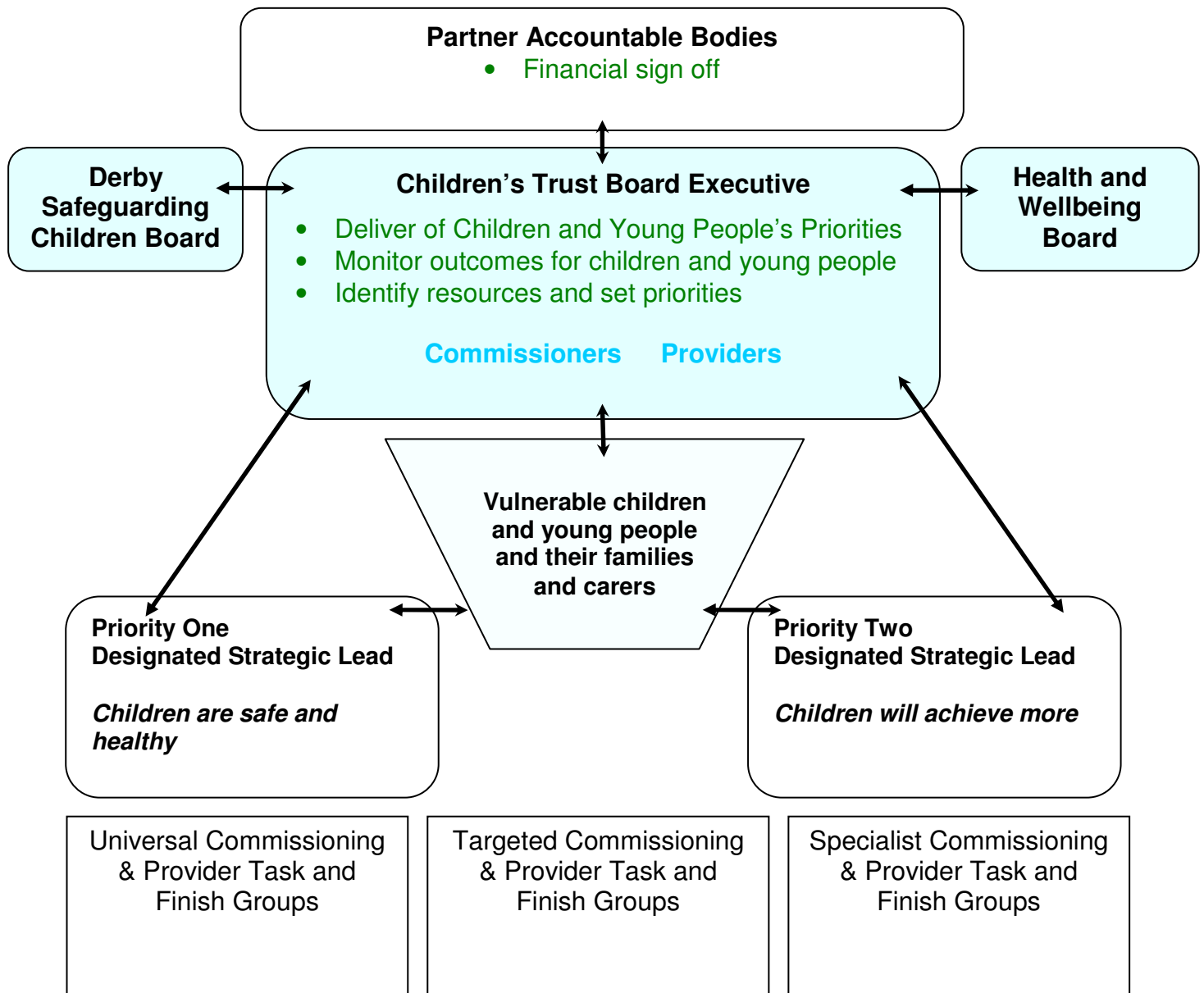
- To share best practice and learning
- To provide services that meet the needs of children and young people in Derby
- To provide services against a service level agreement which seeks to achieve the Children's Trust commissioning priorities for children and young people.
- To feedback issues into the commissioning function on services, agreements etc
- To monitor performance to agreed standards

For Delivering the Priorities

- Through Commissioning and Provider Task and Finish Groups to deliver commissioning priorities
- Flexible – only meet while there is a clear purpose in improving outcomes

d) Structure

The structure of Derby City Partnership is currently under review, this proposal is based upon the assumption that the City for Children and Young People will no longer sit within the future DCP structure.



10. What resources will be required?

There will need to be "buy in" from partners in order to have a seat at the table. There must be agreement and contribution for the development and management of the revised arrangements. For the continued working and delivery of the agreed priorities then the above apply and also members will bring items to the Board where actions and delivery are agreed collectively.

To be effective the Trust, which includes Derby Safeguarding Children Board will need resources to support the delivery of the children's plan. This could be effecting appropriate resources e.g. staff, time and expertise or by allocating a sum of money.

Responses should be returned by Friday 12 November to:

Maris Stratulis

Derby City Council Children and Young People's Department

Middleton House

St Mary's Gate

Derby

DE1 3NN

E-mail: maris.stratulis@derby.gov.uk

Telephone: 01332 711229