



Toni! We have got  
Choices for that!



## Working with LGB&T Communities



Toni Montinaro





**df** **real people. REAL SERVICES.**

[www.gayderbyshire.co.uk](http://www.gayderbyshire.co.uk)

# Why are we here?

❖ 5-7% of people are L.G.B

◦ In Derby - 11,085 - 15,519

DTI 2006

❖ Poor service recognition/unmet needs

❖ Changes in the law

❖ Celebrate strengths

❖ Working 2gether to make a difference





# Terminology

- ❖ L= Lesbian, G= Gay (Men), B= Bisexual, T= Trans
- ❖ Trans – The Trans community is an umbrella term incorporating
  - **Transsexuals** – A Person with gender dysphoria who feels a consistent and overwhelming desire to live their life in the gender that is opposite to that assigned at birth.
  - **Transgender people** – A person who through the use of hormones and surgery takes on the characteristics of the opposite sex and lives permanently in the gender role appropriate to that sex.
  - **Transvestites** – Clinical name for a cross-dresser
- ❖ MSM (Men who have sex with men)



# Common contemporary (homophobic?) views on sexuality:

- ❖ 'political correctness goes too far. People need to be a little less sensitive'
- ❖ 'a joke is simply that and does no harm. Enough jokes are made about us and we don't go on about it'
- ❖ 'what they do in their own homes is up to them but don't do it in front of me because I find it offensive'
- ❖ 'they choose to be gay so they have to take the consequences of that choice'
- ❖ 'being 'trans' is one thing..these 'people' are intent on looking different – they are bound to attract aggression at some point'
- ❖ 'being gay is a choice, I can tolerate the person not behaviour!'

# Just quotes in 2007

'I don't know how the staff will cope!'

*They just assumed'*

'Yes we have a policy'

'It's not a priority'

'No real problem'

'I do it to tick a box'

I'm not giving you any money!

'No such thing as an LGB&T community'

'Why should they be treated any differently'

They deserved it

'They offered me nothing'

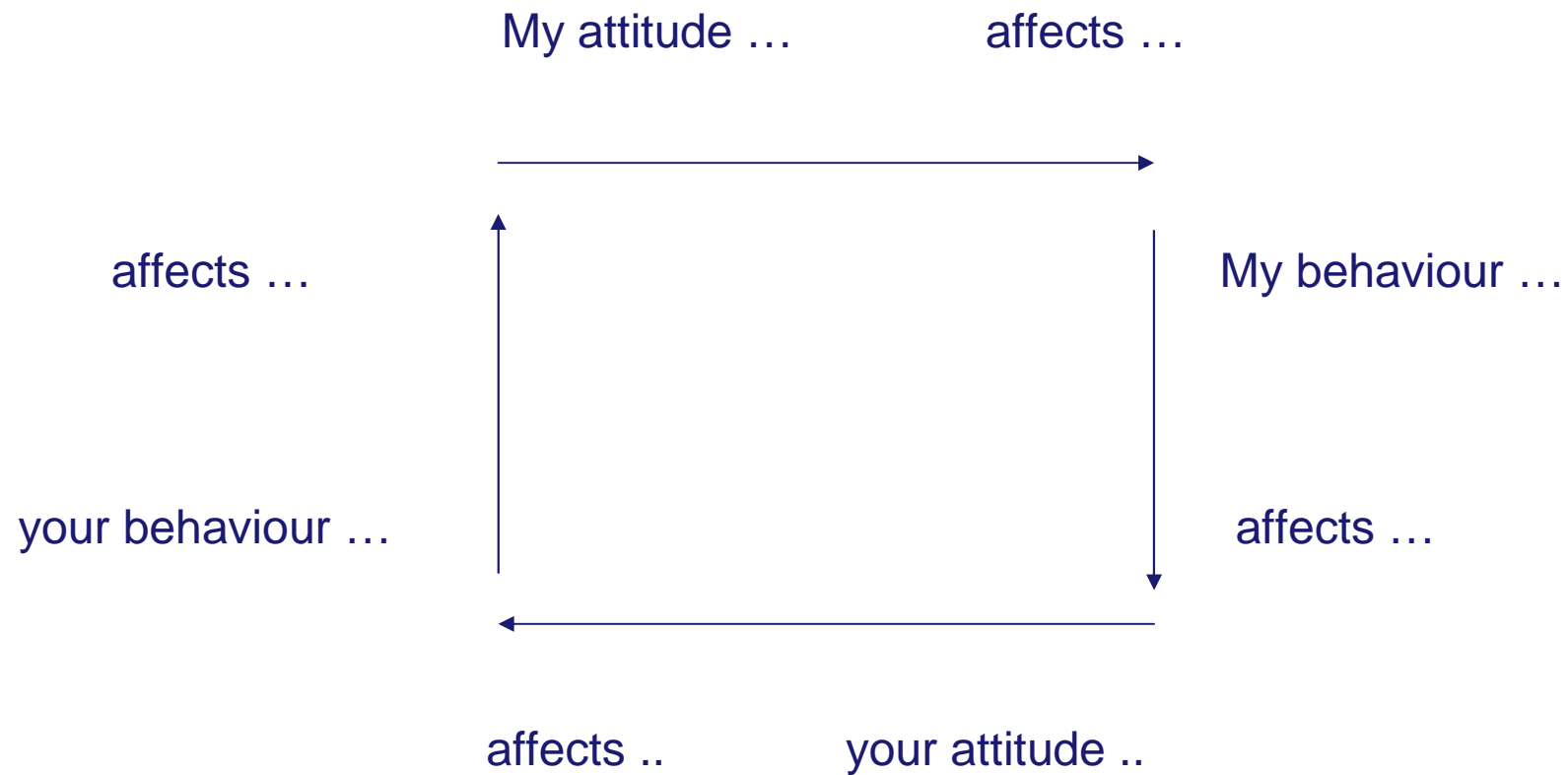
'They offered me a helpline...'

I didn't know about you'

Where do I go?

# Our Attitudes

## Betari's Box



# Where do LGB&T Issues Impact

familial abuse

Homelessness

Domestic Violence

Hate Crimes

Sexual Exploitation

Bullying

Drug misuse

Employment

Older people's services

Schools

Community Cohesion

Supporting People

Housing

Community Safety

Adult services

The List Goes on .....



# Issues

*Lack of role models*

Service invisibility

*Discrimination*

Isolation

*Hard to Reach?*

Poor Family Support

# Fear

Needs not identified

Poor understanding of rights

*Just putting up!*

*Where do I go?*

*lack of awareness*

*Diversity?!?*

# The weight of fear

Who will believe me

Where can I go

Do I have to Come Out

What will happen to me

It will happen again

“I don’t have any  
problems...its quiet  
here....I have some  
kids scratching my car  
but its not  
homophobic.....they  
do call me a ‘Lezzzer’  
but I don’t retaliate..  
its not worth it”



Anon – Female 36  
Talking about an  
experience  
last year

“God I wanted to leave  
so fast,  
I was fed up, fed up of being  
picked on at school, called  
names at home...  
n’ being thumped  
I was like a punch bag”

...anon 18  
16 when the person  
left home



# A sense of wellbeing ?

- ❖ Smoking
- ❖ Alcohol & Drug Misuse
- ❖ Sex and Relationships
- ❖ HIV
- ❖ Domestic Violence
- ❖ Mental Health
- ❖ Suicide
- ❖ Job, Home, Money
- ❖ Identity
- ❖ Poverty/Isolation
- ❖ Poor family Ties



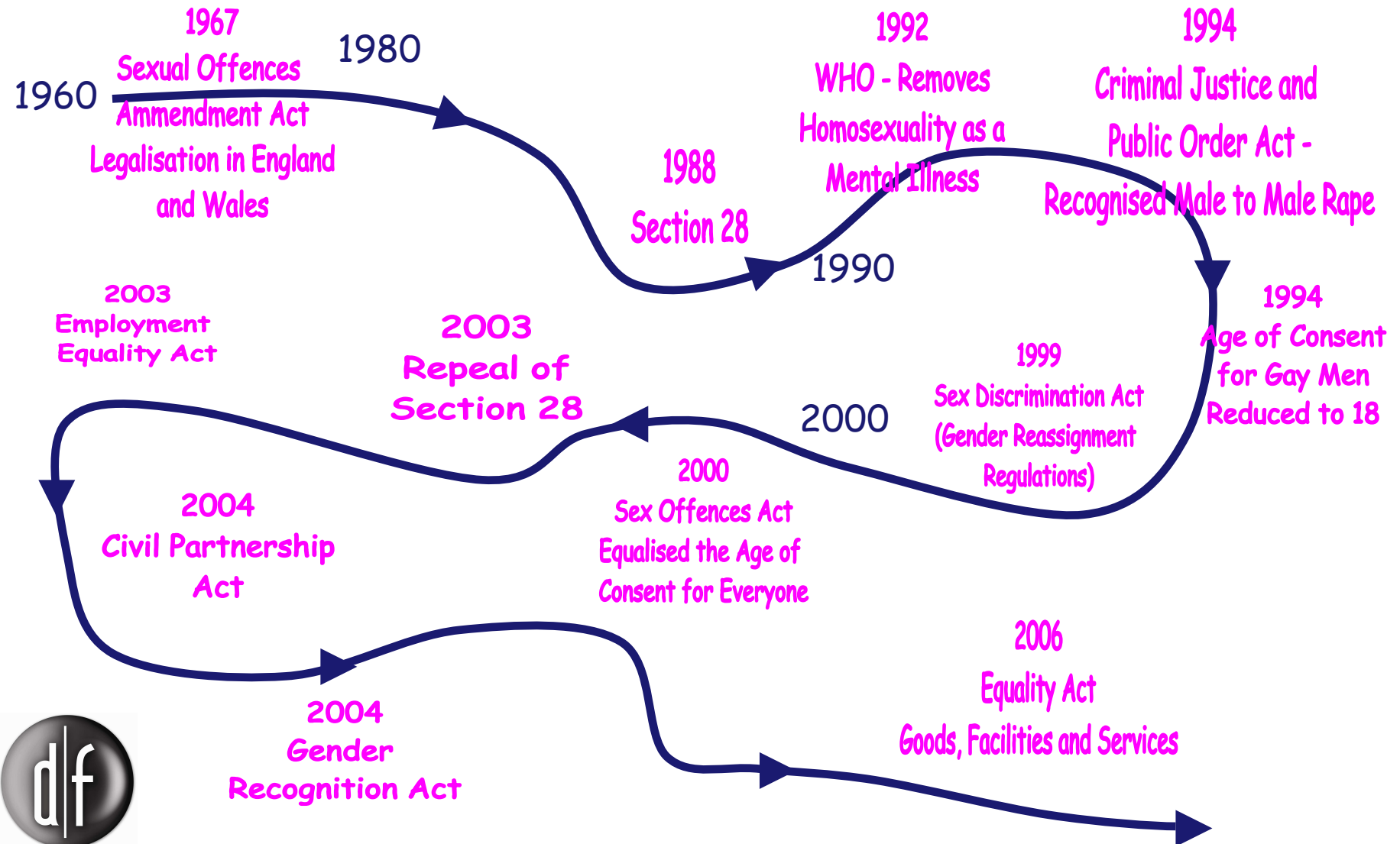


# A sense of safety

- ❖ Same sex domestic Violence
  - *Perpetrated by partners or ex-partners of LGBT people.*
- ❖ Homophobic domestic violence
  - *Perpetrated by family members against LGB people on the grounds of their sexuality.*
- ❖ Transphobic domestic violence
  - *Perpetrated by family members against transgender people on grounds of their gender/identity.*
- ❖ SSDV is very under-reported
  
- ❖ **Risk**
  - *Majority of hate crime victims are, at a greater risk of becoming repeat victims. A first incident comes to the notice of the police is not necessarily first time an offence has been committed.*



# 'Change and not a moment too soon'



# Equality Act 2006

- ❖ Prohibit discrimination on the basis of someone's actual or perceived sexual orientation, or the sexual orientation of someone with whom he/she is associated.
- ❖ Refers to the provision of goods, facilities and services, for example;
  - Refused access to support, help or advice
  - Refused entry/service, or encountered discourteous/hostile treatment at organisations
  - LGBT Services or Issues not highlighted/referred in resources or leaflets
- ❖ Regulations apply to all sexual orientations; Heterosexual, lesbian, gay and bisexual.



## Derby Does it – What is it about Abbey/Arboretum/Normanton?

- ❖ Diverse & thriving Gay community
- ❖ LGBT Centre,
- ❖ 2 LGBT orgs
- ❖ 2 Youth groups
- ❖ 4 LGBT Bars
- ❖ Gay Friendly Bars
- ❖ 5 LGBT groups
- ❖ Civil Partnerships
- ❖ We are a diverse community
- ❖ BME, learning difficulties, enduring mental health...

# Making a Difference

**To further increase the support given to people**

**Really good examples  
where Derby should be proud.**

**GD Forum**

**LGB&T  
Group**

**Schools**

**EIA's**



# Could the City Council do more?

Who is doing Casework / Independent Advocacy

Why is there no funding & resources

Is there commitment to equality – 6 strands

Understanding legislation – who's job is it

Make a decision (Neighbourhoods vs Real Engagement)

Commissioning & Procurement

# Could the City Council do more?

Young people and Bullying/sexual exploitation

Why are we invisible in Community Cohesion

Recognising vulnerable young people

More work around same sex domestic Violence

Older people

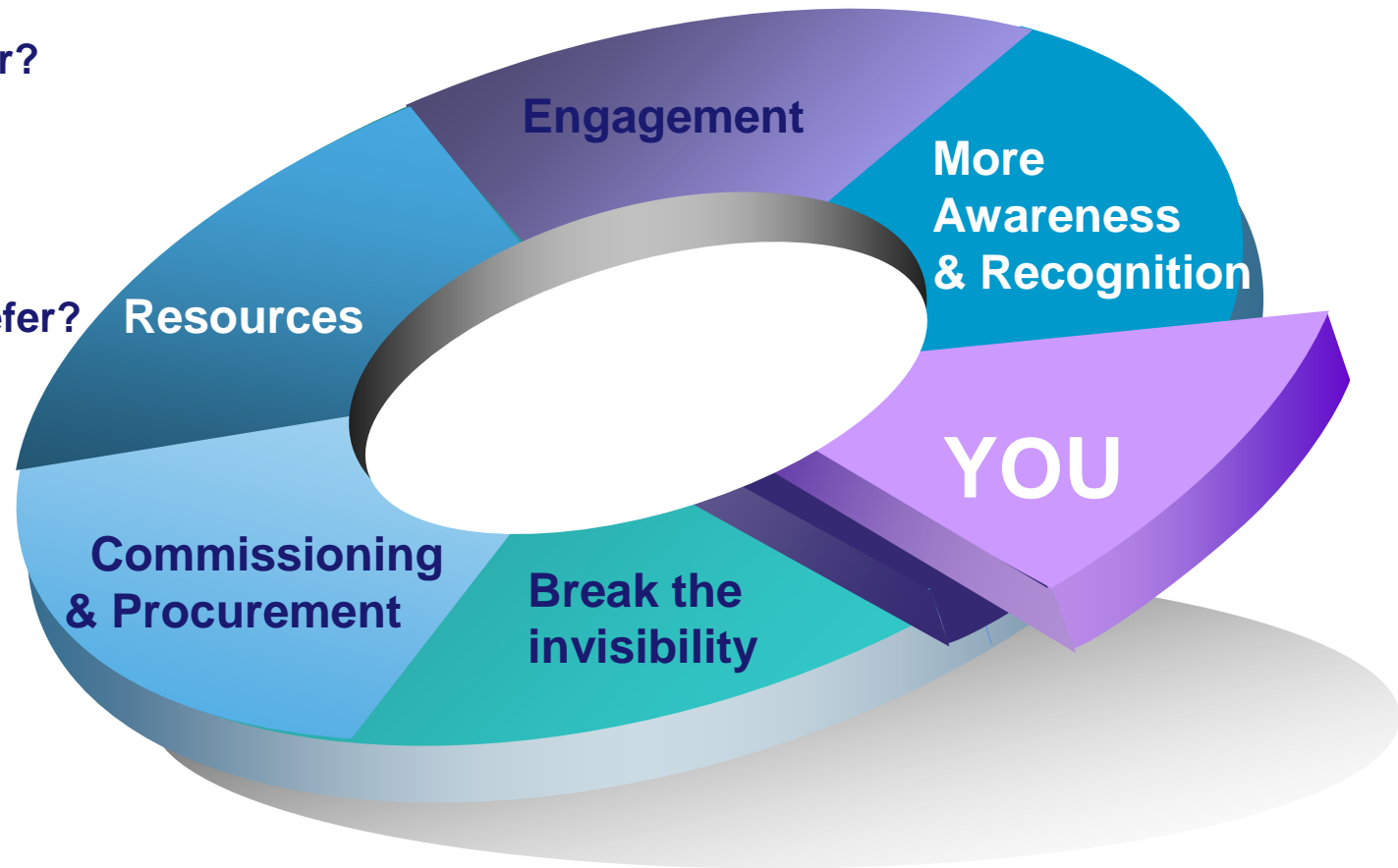
# Improving the 'Experience'

Support...

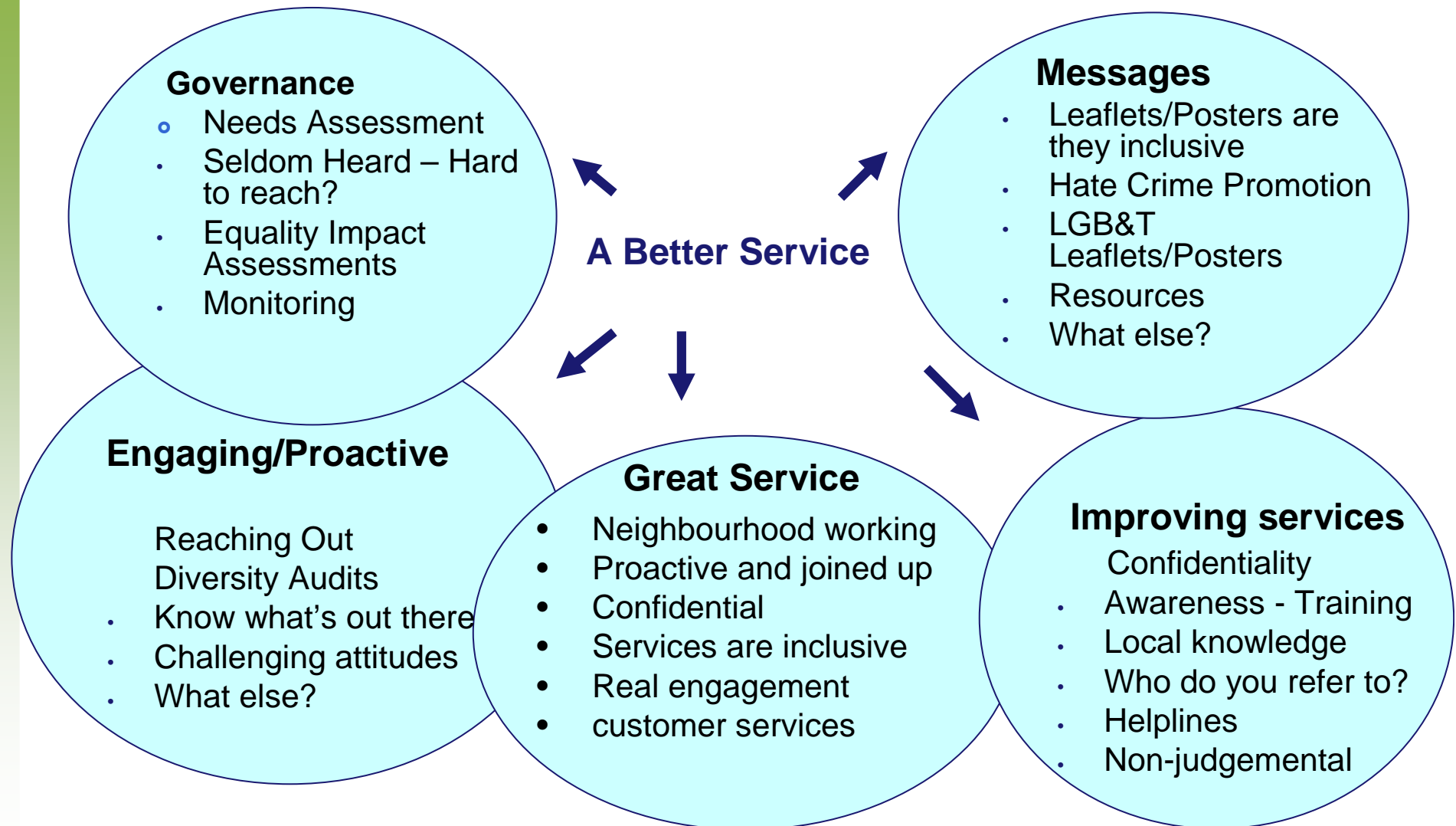
How do we refer?

Where do we refer?

What makes a Difference?



# What can be improved?





# Building towards A Healthy

## Lesbian and Gay Derbyshire

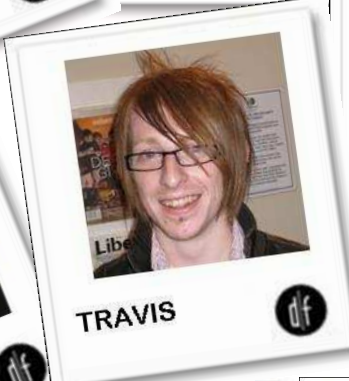
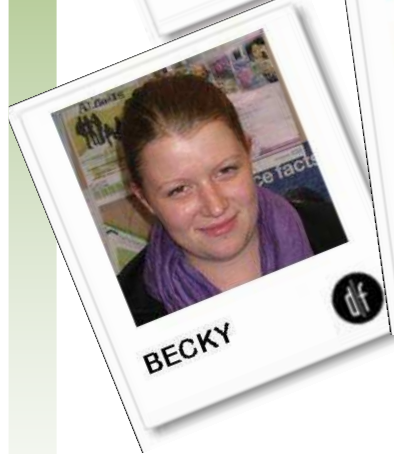
- ❖ Specialists in HIV/Sexual Health, Equality work & LGBT Youth
- ❖ Outreach/Groups/Workshops
- ❖ LGBT Community Centres – {Derby}
- ❖ Help and Advice (Switchboard, Drop-in, Face to Face)
- ❖ Community Development
- ❖ Outreach – SHAG & PSE
- ❖ Training and Consultation
- ❖ Advocacy & Referrals
- ❖ Volunteer Recruitment and Development





# Overview of Services

## The Team



# Any questions

Toni Montinaro – Manager

Derbyshire Friend  
LGBT Specialist Support  
and Advocacy Services  
THE LGBT Pavilion Centre  
2-3 Friary Street  
Derby, DE1 1JF  
(01332) 207704,  
[www.gayderbyshire.co.uk](http://www.gayderbyshire.co.uk)  
[info@gayderbyshire.co.uk](mailto:info@gayderbyshire.co.uk)

