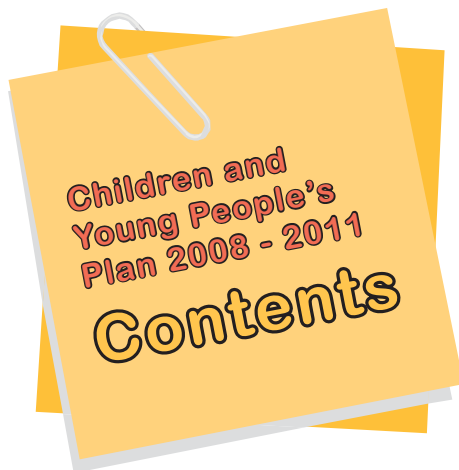


Derby Children and Young People's Plan 2008 – 2011



Building for a brighter future



Section	Page
Acknowledgements	3
Foreword	4
Introduction	5
Derby at a glance	6
The story so far - progress overview	10
Shared Principles/Priorities/Outcomes	15
Working Together	16
What children, young people and parents have told us	16
Use of resources to support the Plan	22
Narrowing the gap – our achievements to date and Key Actions	23
• Be Healthy	24
• Stay Safe	26
• Enjoy and Achieve	28
• Make A positive Contribution	30
• Achieve Economic Well-being	32
How we will deliver our key actions	34
• Children's Trust governance arrangements	34
• Commissioning arrangements and structure	34
• Performance management	35
• Pro-active engagement of children, young people and parents	35
• Workforce development	36
• Integrated locality working	36
Glossary	38
Appendix A Children's Trust Governance Structure	41
Appendix B Range of services provided across the Partnership	42
Appendix C Joint Commissioning Structure	45
Appendix D Joint Commissioning Strategy	46
Appendix E Every Disabled Child Matters (EDCM) Local Authority Charter	49

*Please refer to CYP Action Plan 2008-2009 for:
Detailed Key Actions and the Performance Management Framework.*

Acknowledgements...

Partners involved in the development of the Children and Young People's Plan

- Children, Young People, Parents and Carers
- Children and Young People's Network
- Connexions Derbyshire
- Derby Children's Fund
- Derby Community Voluntary Sector
- Derby City Council
- Derby Community Safety Partnership
- Derby City Primary Care Trust
- Derby Hospitals NHS Foundation Trust
- Derbyshire Learning and Skills Council
- Derbyshire Mental Health Services NHS Trust
- Derbyshire Constabulary
- Equality Impact Assessment Group
- QUAD.



Foreword...

Welcome to Derby's Children and Young People's Plan 2008 - 2011. This plan sets out the ways in which our Partnership will respond to the challenges of the five Every Child Matters Outcomes for children and young people in the city.

Be Healthy: enjoying good physical and mental health and living a healthy lifestyle.

Stay Safe: being protected from harm and neglect.

Enjoy and Achieve: getting the most out of learning and life, and developing skills for adulthood.

Making a Positive Contribution: being involved with your community and not engaging in anti-social or offending behaviour.

Achieve Economic Well-being: not being prevented by economic disadvantage from achieving your potential and being protected from harm.

We already have a well established, effective Partnership committed to the shared vision of:

"Building a brighter future for children and young people that provides a healthy, safe and happy childhood, with the opportunity to achieve their full potential."

This plan has been written following the hard work, commitment and fantastic contribution of children, young people, parents, volunteers and staff across the partnership. The information that we have received from partnership stakeholder events, outcome groups and participation activities has been crucial in helping to shape the key challenges and priorities for the plan. Children and young people are our future and they only get one chance to grow up. We must set our sights high to make sure that we listen to their aspirations and support them in achieving their potential. By working together we can improve outcomes for children, young people and their families.

Thank you



A handwritten signature in black ink that reads "Andrew Flack".

Andrew Flack
Chair of the City for Children and Young People

Introduction...

In creating a shared purpose and plan for our work we will build on the positive relationships that we have established, and which are essential if we are going to improve our services. The first real test of our Partnership came in October 2007 when Ofsted undertook a Joint Area Review (JAR) of our services to children and young people.

The JAR evaluated the collective contribution made by all relevant children's and young people's services in meeting the outcomes for our children and young people (CYP). We were given an overall GOOD grade which reinforces the fact that that we are having an impact on the outcomes achieved by children and young people growing up in Derby and making a difference to their lives. We were delighted that the outcome was a very positive recognition of the work we are doing in the city to integrate children and young people's services.

However, there is always room to improve, and areas for development are built into the new plan to reflect our agreed Principles.

Equality at the forefront of everything we do

Equity of access for all children with targeted support for some

To focus on prevention and early intervention

Children, young people and families receive support at the right time and in the right place

Narrowing the gap

Improving outcomes for vulnerable children and young people, alongside improving outcomes for all

To promote enjoyment for children, young people and their families at home, in learning and in the community

Children and young people realise their aspirations, dreams and talents

This Children and Young People's Plan (CYPP) provides the strategic overview of our Children's Trust arrangements and activities and is underpinned by a more detailed action plan showing how we will deliver our priorities for 2008-2009.

Derby at a glance...

Every Child Matters

The five outcomes are universal ambitions for all CYP. Derby Children's Trust is committed to delivering the outcomes to ensure children and young people are healthy, safe, and free from poverty, respected and valued. We know from national research that educational achievement is the most effective route out of poverty and we intend to deliver our key actions to make a real difference to improve the lives of CYP.

Derby Children's Trust

Derby Children's Trust brings together partnership organisations to improve outcomes for CYP through the delivery of universal services, integrated responsive services and specialist support. (Please see Appendix A – Children's Trust Governance structure);

- the Trust governance ensures a shared vision and aims, embedded by core fundamental values.
- the Trust is committed to collective ownership at a strategic and operational level for the delivery and improvement of outcomes for CYP
- promotes honesty, transparency and accountability - being honest about what we can and cannot do and explaining the reasons for our decisions
- ensures that performance management drives outcomes
- listens to the views of children and young people

Our City

Derby is a vibrant city with a population of 221,614 people, of which 23.6% (52,277) are children and young people under the age of 18 years and 2.7% (6,011) of the population are aged 18-19 years. The city covers an area of 77.7 square kilometres and prides itself in embracing diversity and equality, investing in commercial development, supporting local businesses and industries while at the same time respecting the green space around the city, and promoting the arts and culture.

The city has a rich mix of people from diverse cultures and backgrounds, with 12.6% from Black and Minority Ethnic (BME) groups, which equates to 22.3% of school-age pupils from BME communities. Over 60 languages are spoken in the city and, more recently, new communities have settled here from Eastern Europe.

The city has areas of affluence as well as severe deprivation, and the indices of deprivation identify four wards as ranking amongst the most deprived in England – Arboretum, Derwent, Normanton and Sinfin. Unemployment is currently below the national average; however, there are high levels of unemployment in two inner-city wards. Unemployment rates for BME people are twice that for white people; and long-term youth unemployment are both higher in the city's most deprived wards. In December 2007 there were approximately 11,200 children living in out-of-work families.

Overall, the indicators of health are worse than average when compared with England and the East Midlands. There is a seven-year gap in life expectancy between those living in the 20% least deprived areas of the city and neo-natal and infant deaths also reflect a deprivation impact.

Vulnerable children and young people

Nationally we know that there are a number of identified vulnerable groups of children and young people, these are:

- children living in poverty
- children in care (CiC)
- disabled children
- children with statements of Special Educational Needs (SEN)
- pupils with SEN without statements
- children excluded from school: permanent and fixed term
- children with poor records of attendance
- young offenders
- children at risk of significant harm
- children living with vulnerable adults
- pupils whose home language is not English
- young mothers (under-16 conception rate)
- asylum seekers/refugees including unaccompanied CYP
- children in unsatisfactory housing.

(Taken from Narrowing the Gap 2007)



If i were a super hero,
my name would be
Jedi Josh and I would
use the force!

Who are Derby's vulnerable children?

Vulnerable children in Derby reflect the national trend and we know that:

Be Healthy:

- Our under 16 conception rate is on a downward trend at 8.7%, compared to 7.7% nationally (2003-2005)
- 947 children and young people have a statement of SEN, this is 2.51% of child population in Derby compared to 2.8% nationally (Jan 2008 school census)
- There are five wards in the city where more than 10% of new births have a birth weight of less than 2500grams: Alvaston, Arboretum, Mackworth, Normanton and Sinfen
- 25 adult drug users in treatment for drug/drug and alcohol misuse had dependant children (Qtr 4 2007/08)
- 637 children and young people attended Derby City Accident and Emergency Units in Derby during 2007 with serious injuries
- 2,188 children aged 0-17 inclusive with a limiting long term illness (Census 2001, Office National Statistics)

Stay Safe:

- 167 children were at risk of significant harm in March 2008, which is higher than the national average
- There were 402 CiC at March 2008 which is higher than the national average.

Enjoy and Achieve:

- 91 children were permanently excluded from school in 06-07, which is higher than the national average
- 997 children had a fixed term exclusion during 06-07, which is lower than the national average
- 349 children had poor records of attendance at primary school during 06-07, which is slightly higher than the national average
- 1045 children had poor records of attendance at secondary school during 06-07, which is slightly higher than the national average
- 14% of pupils in the city were classified as having a first language other than English compared with 7.8% in the East Midlands and 12% nationally.

Making a Positive Contribution:

- There were 2859 offences committed by 1055 offenders during 06-07
- The Youth Offending Service Prevention projects have worked with 450 people across the city in the last year.

Achieve Economic Well-being:

- There were 3,270 households with dependent children receiving Income Support or Pension credit at May 2007, this equates to 7,200 children
- The unemployment rate was 2.7% in March 2008, which is below the national average but youth unemployment in the city is high in our most deprived wards
- Of the 8.2% of 16-18 year olds who were not in education, training or employment, 24.4% of them were not in education, employment or training for six months or more at the end of October 2007
- 17.7% of pupils in Derby are eligible for free school meals compared to 11.1% in the East Midlands and 14.7% nationally
- 58 young people aged 16/17 assessed as statutory homeless in 2007/2008. Reduction from 167 in the previous year.

Data source information provided by Data Warehouse, CYP Management Information Team and partner organisations.

What does this tell us about CYP in Derby?

This identifies some of our neediest and vulnerable CYP in Derby and where they might live. This helps us to start the process of how we 'narrow the gap' for vulnerable children and young people.

What do we mean by 'narrowing the gap'?

It is clear from our local needs assessment that some children and young people are more vulnerable and more likely to under-achieve than others, which impacts on their ability to reach positive outcomes.

Our plan aims to 'narrow the gap' in outcomes between our vulnerable and most at-risk children and young people. This is against a context of improving outcomes for all as a whole.

The majority of CYP in our city grow into adults supported by loving, caring families. Some children and young people become vulnerable and at times they and their families need extra help in their lives. Other children and families need a lot of extra support and a small percentage of children, young people and families need intensive support.

However, some children, young people and their families will face problems which they cannot solve without the help of Children and Young People's Services. The level of help and support that they need will vary, depending on the complexity of the problem they face; it may range from a little extra support to very intensive support. We will therefore work together to deliver services based on the assessment of need.

If Derby was a food,
it would be seasoned
rice because there are
different cultures in Derby



The Story so Far...

What have we done to improve outcomes for CYP since we reviewed our last Children and Young People's Plan?

We have involved children, young people and their families in 'telling their story'

We actively engaged children, young people, the voluntary and community sector and partners in reviewing our key actions and targets from our last plan. For example, over 500 CYP have participated in the shaping of our services. Increasingly with the development of the parenting network and parenting steering group we are engaging parents and carers. For example there are several parent groups, including two fathers' groups that support strong parental involvement in developing services.

Voices in Action

Voices in Action (ViA) is a representative group of young people, mainly aged 11-19 years, from across Derby. The group is made up of young people from different schools, youth groups, support groups, community groups, voluntary groups and individuals who have an interest in issues affecting young people.

At each meeting of the City for Children and Young People's Executive two young people from ViA attend and make a significant contribution to shaping the agenda and influencing partnership activities. ViA have pro-actively focused on the importance of communicating positive images of young people and have worked with QUAD artists to create posters and slogans to challenge negative stereotyping. Posters will be displayed on buses, highway boards and hoardings across Derby. Young people have decided that their three priorities for 2008 are:

- activities
- public transport
- street crime.

Key actions supporting these priorities in our plan include:

- improving opportunity and access to recreational activities for children and young people
- exploring how the transport needs of young people including vulnerable groups and young people with Learning difficulties/disabilities can be improved
- engaging young people in neighbourhood youth forums and neighbourhood boards and to address community and personal safety.



We embrace equality, diversity and promote equitable access to services...

- The Equality Impact Assessment Group has provided training to the five outcome groups on the six strands of equality: Religion, Gender, Age, Race, Disability and Sexuality
- The Council has achieved level three in the equalities standard requirements of the Equality Standard for Local Government
- We have reviewed and refocused services to tackle the identified problem of the disproportionate number of children from black and minority ethnic (BME) groups within the care service
- The Care Leaver's service provides a dedicated provision for unaccompanied asylum-seeking refugee young people who come into the city
- Partners in the statutory and voluntary service have reviewed the impact of policies considering the six strands of equalities
- Information is available in a wide range of languages and in different formats.

We have incorporated the six strands of equality in the delivery of services to children, young people and communities including:

- Delivering Derby Safeguarding Children Board (DSCB) training to faith communities
- Targeted gender sexual health projects - Time for Girls and Boys and Young Men
- Youth service delivery of culturally appropriate programmes to years 9 and 10 pupils at Sinfin Community School, linked to Black History Month and the Derby Caribbean Carnival
- The Access Service is improving the life chances of BME pupils by providing focused support for targeted pupils including those with English as an additional language, across all key stages
- A New Arrivals booklet has been developed for schools focusing on the important things parents need to know about school and the differences between the English school system and that of other countries
- The Specialist Support Teaching Service has supported the inclusion of 649 children with disabilities in mainstream school
- The Early Intervention Team has supported the inclusion of 108 children with high levels of special educational need/learning difficulty or disability in 64 settings
- Derbyshire Friend has supported gay, lesbian, bisexual and transgender young people.

We provide good quality training and support accessible to parents and staff from all agencies...

Parenting programmes are being delivered across the city in various community settings including:

- 25 parenting practitioners are trained to facilitate Strengthening Families and Strengthening Communities and 25 practitioners have been trained to facilitate Webster Stratton Parenting Programmes
- Common Assessment Framework (CAF) and Lead Professional training, including safeguarding courses for parents
- Successful delivery of family learning through the Peers Early Education Partnership
- The Family Intervention Project (FIP) provides targeted support to families with children and young people at risk of offending
- Family Nurse Partnership (FNP) was cited as an example of good practice in the JAR report for its innovative health and intervention work.

Our Parenting Strategy developed in 2007 has been implemented and will be reviewed during 2008 with the development of a three-year action plan.

We continue to adopt a joined-up approach to the delivery of preventative local services by partner agencies...

There is on-going, effective, multi-agency partnership work that identifies and responds to the needs of children at risk in an appropriate and timely way. The contribution of local services to improving outcomes for children in care and young people is strong and effective partnerships are making a discernible difference to children's lives. We are testing the use of locality planning groups to establish a comprehensive picture of services for CYP, and it is our intention to strengthen the links with the city-wide development of neighbourhood management. The Area 1 Trailblazer continues to move forward with the development of integrating children and young people's services and has established co-located, multi-agency teams. A formal evaluation of the Trailblazer will take place mid - 2008.

Derby is recognised nationally for developing work on the Common Assessment Framework (CAF), including the development of a training course for parents on 'safeguarding and CAF', alongside implementation of the role of the Lead Professional, information-sharing and ContactPoint. These continue to be viewed as critically important processes to support front-line delivery of integrated services.

Derby and Derbyshire Safeguarding Children Boards will jointly commission a task group in 2008 to review the partnership response to children affected by domestic violence.

The Youth Offending Service is a key partner in the city's collaborative preventative work with young people in danger of offending and re-offending.

We value our Voluntary and Community Sector (VCS) partners and will implement 'The Derby Compact'...

The Derby Compact provides a framework for partnership working between the statutory and voluntary and community sector and a range of local public bodies and sets out core principles for working together. Voluntary and Community Sector engagement is critical to Compact implementation and the Children and Young People's Network plays a significant role in partnership activities.

The partnership values the important contribution from the voluntary and community sector and is committed to open, transparent, equitable working practices to improve VCS and statutory sector relationships.

We have successfully developed and implemented the CYP Participation Strategy by involving children and young people in the planning and development of services...

Derby has a culture of including children, young people and their parents/carers in the planning of services at all levels. Strategic participation is co-ordinated across Derby by commissioners of participation groups with representatives of statutory and voluntary services, supported by a network of local practitioners. The Participation Strategy and Action Plan support this work. Children and



young people from Voices in Action work with the Executive to help check progress and refresh our plan's priorities. There are also many good examples of capturing the views of specialist and targeted groups through:

- Derbyshire Friend and Choices, who provide support to gay, lesbian, bisexual and transgender young people
- KICK (Kids In Care in Kontrol) for CiC
- Work with children, young people their parents and carers at The Light House Integrated Disabled Children's Service (IDCS)
- Young People's Reference Group – Addaction
- Space Young People Steering Group.

There has also been an increase in the number of children participating, and being helped to participate, in their statutory reviews. Performance in this area is now above average nationally and for similar authorities. A wide range of well-received training is provided to ensure that staff and carers understand their responsibilities to report any concerns that arise.

We are providing improved services for black and minority ethnic children...

- The Children in Care Service has achieved an appropriate reduction in the proportion of BME children in care and the provision of a service better suited to their needs.
- Workforce training and development is on-going, to develop and deliver training to staff to support safeguarding for BME children and disabled children.
- Through the New Arrivals (Roma) Strategy, Derby offers comprehensive and co-ordinated support for one of the most vulnerable BME communities in the City. The Council is able to demonstrate that average attendance across all groups has increased by at least 15% and speedy access and improved attendance is impacting on attainment. As well as internal partners, strong links exist with other partners and providers.
- Training has taken place in all of the schools with considerable numbers of Gypsy, Traveller and Roma children on roll. Evaluations assess the service offered to Roma New Arrivals as being excellent to good.
- The DVD "Are we there yet?" highlights the issues and experiences of new arrivals and is circulated to schools and organisations.

Improved outcomes for children and young people with learning difficulties and/or disabilities (LDD)...

There is a high commitment to the inclusion of CYP with LDD in schools and in their local area. The integrated disabled children's service (IDCS) is a model of good practice and children, young people and parents are telling us how much they value these services. The services provided by The Light House and the support for CYP who are hearing-impaired are also major strengths, as are the excellent recreational facilities available for those with learning difficulties and/or disabilities.



We have reviewed the Teenage Pregnancy Partnership and established a Teenage Pregnancy Commissioning Board...

There has been positive progress in reducing under-18 conception rates. We have developed a wide range of initiatives that enable young people to make positive and informed choices about relationships and sexual health. We also provide additional support for teenage parents as and when they need it.

We have strengthened our strategic approach to homeless young people aged 16 to 19 years to improve communication and resource availability across the city...

Our Achieve Economic Well-being Outcome Group is co-ordinating partnership activity with the YMCA, Housing Options, Derby Homes and other providers to agree a young persons' housing protocol for Derby. This has the aim of reducing the numbers of homeless young people in the first instance, and those accessing bed and breakfast and unsuitable temporary accommodation in the city.

How do we provide services to children, young people and families in Derby?

The partnership provides a variety of services to children, young people and families through universal, targeted and specialist services to meet individual need.

What do we mean by Universal, Targeted and Specialist Support?

Universal Services – available to all CYP

- Universal services are provided by a variety of organisations to all children, young people and families in Derby
- The following are examples of universal services: midwifery, health visiting, nurseries, schools, GP services, children's centres, extended services and Connexions information, advice and guidance services.

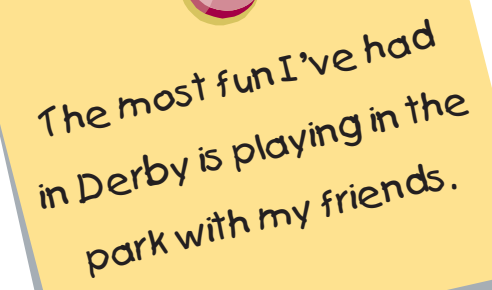
Targeted Services – available to vulnerable CYP

- Targeted support provides extra support at different times offered through services that provide specific help
- Targeted support services could be provided by: a Lead Professional, who is a family visitor from a Children's Centre, a worker from a voluntary and community project, a member of staff from the Family Nurse Partnership providing health and parenting advice, a Youth Offending worker, or another frontline practitioner.

Specialist Services – available to CYP who need specialist support or intervention

- Specialist services provide intensive support or protection to children and young people with more complex needs
- Examples of specialist services include Child and Adolescent Mental Health Services, Substance Misuse and Speech and Language Services, children's homes, foster carers, short break services for disabled children, acute health care provided by Derby Hospitals and the Specialist Teacher and Psychology Service (STePS).

Please refer to Appendix B for more detailed information about some of the services provided to children and young people from across the Partnership.



The most fun I've had
in Derby is playing in the
park with my friends.

Shared Principles, Priorities and Outcomes...

The overarching Principles, Priorities and Outcomes provide a framework and vision for CYP services in Derby. These have been reached following consultation with:

- children, young people and their parents
- a development session in January 2008 with members of the City for Children and Young People's Executive, Chairs of the Outcome Groups, representatives from the Joint Strategic Commissioning Board
- and over 100 stakeholders who attended the 'Children and Young People's Plan – Next Steps' Stakeholder Event in February 2008.

Principles

- Equality at the forefront of everything we do
- To focus on prevention and early intervention
- Narrowing the gap
- To promote enjoyment for children, young people and their families at home, in learning and in the community.

Priorities

- Parenting*
- Safety, belonging and being valued in the community
- Building ambition, aspiration and achievement
- Physical, emotional well-being and safe choices

Outcomes

- Derby has positive, caring and responsible parents, who enable children and young people to meet the five Outcomes.
- To ensure all children and young people are listened to and can participate in decision-making in their local communities.
- Children and young people are supported to develop and maintain positive relationships and have access to new opportunities.
- Children, young people and their families are supported to understand risk and how to make safe choices.



* Parenting definition - Derby's Parenting Strategy 2007-2008

Working together...

What children, young people and parents have told us

What children in care want to tell their corporate parents about...

Be Healthy

"I don't want to keep hearing that I'm fat, that I should stop smoking or that I'm putting myself at risk. I just want help to keep fit and the right weight, to stop smoking and not get ill and, if I ever get the chance, I don't want to get anyone pregnant".

Stay Safe

"I need to take some risk or I'll not be able to cope when I leave care. Being in care shouldn't mean that I miss out on doing things that others my age do".

Enjoy and Achieve

"I want you to help me enjoy school and enjoy learning, and help me to achieve what I can, even if that means giving me extra help because I have missed some time at school or have had to change schools too often".

Making a Positive Contribution


"I think that we ought to have more chances to get included in more activities to express ourselves. When a chance comes along you always try your best to make a positive contribution. But when you can't you get very upset".

Achieve Economic Well-being

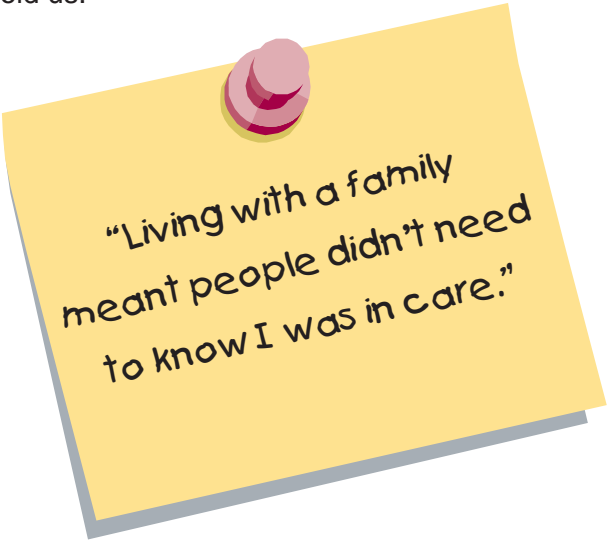
"I would like to have a part-time job like other people have and I would like help to find one.
Can you help me find work placements?"

What CiC want to tell their corporate parents about changes of placement


Between January 07 and June 07 information was collected from CiC who had a change of placement, to get feedback on the placement they had left behind and consult on how things could be improved. They told us:



"Friends should be allowed to visit me and spend time in my bedroom to listen to music."




"Living with a family meant people didn't need to know I was in care."



"I liked staff telling me what time to come in as it showed they cared about me and wanted me to be safe."


Things that would make placements better...



"Being trusted to choose own friends."



"Be given more freedom."



"Being allowed to have friends for tea and sleepovers."

TellUs2 survey 2007

Children and young people have engaged in local and national surveys. This is a summary of what they have told us:



Be Healthy

- 84% of CYP feel that they are very/quite healthy (this compares to 86% nationally).
- 22% of CYP eat five or more pieces of fruit or veg a day (23% nationally).
- During a typical week, 74% of CYP are active for 30 minutes or more at least three times a week (73% nationally.)
- The main worries for CYP are: exams (48%) and friendships (35%). These are also the main worries for CYP nationally.



Stay Safe

- 70% of CYP feel very / quite safe in their local area (74% nationally).
- 92% of CYP feel very / quite safe from being hurt by other people at home (95% nationally).
- 50% of CYP feels that their school deals with bullying very/ quite well (57% nationally).

Enjoy and Achieve

- 52% of CYP enjoy school always/ most of the time (58% nationally).
- 80% of CYP try their best at school always/ most of the time (81% nationally.)
- CYP suggested they would like to try the following activities that they don't currently do:
- 41% would like to go swimming, 41% would like to attend the gym and 40% would like to attend the cinema/theatre.



Making a Positive Contribution

- 31% of CYP have voted in school, class or year group election (43% nationally).
- 42% of CYP feel that their views are listened to in the running of their school (53% nationally).



Achieve Economic Wellbeing

- 62% of CYP feel that the public transport is very good/ fairly good (57% nationally).
- 23% of CYP want to get a job at 16 when they leave school (16% nationally).
- 40% of CYP want to study and then go to university when they leave school (50% nationally).



The differences between Derby and the national figures have contributed to Derby City Partnership's decision to adopt the theme of 'Raising Aspirations' in the city for 2008-09.

Feedback from CYP during 2008

In January 2008, 70 CYP from across Derby gave their views on services, their neighbourhoods and having a voice either through conversations or making DVDs. Here is a selection of what they said:

"The hospital and doctors' services are pretty good, appointments made easily."

"Create more forums for young people to give opinions."

"Most of the adults encourage young people to speak up wherever you go."

"If a child wants to stay with a foster carer and the foster carer wants them to stay with them they should."

"We need more late night buses, from the city to the area."

"When it's a serious issue the police will sort it. If it's a broken fence, little things - my dad or neighbour will fix it."

"The park we have had built was what we asked for and there is a café there and it is looked after and safe."

'Reality Check' (DVD)

The stories in this DVD are about our vulnerable young people who have had real life experiences of pregnancy, parenthood and sexual health services in Derby:

"We like it when you ..."

"include us and are honest about what will happen next."

"know that at these times every word you say can make a massive impact"

support us rather than judge us."

Smile and understand our feelings can change several times."

Review and Development of Children in Need Services to Children and Families from Black and Minority Ethnic Communities



Specialist Teacher and Psychology Service (STePS) Parents' Survey 2006/2007

574 parents of children attending six primary schools in Derby reported:

Majority of the parents indicated that they found staff at the school friendly. They were aware who to contact in case they were concerned about their child's progress and indicated they would feel comfortable about approaching school with a question or problem.

Areas for improvement identified:

- more information about how parents could help their children with bullying or friendship issues
- how parents could help children with their academic problems, such as literacy or maths
- more leisure facilities in their area.

Consultation with disabled children, young people and their carers

The Integrated Disabled Children's Service (IDCS) consulted with children and their parent /carers in 2007.

Of the 26 participants:

- 45% were from Black and minority ethnic communities
- 11% were currently on the child protection register
- 15% were currently, or had been previously, subject to care proceedings.

Aspects of the service children enjoy

- Toy and play activities.
- Words like happy, pleased, relaxed, content and settled, 'smiley and flapping' appeared many times in the summary of each child's consultation.

Aspects of the service children did not enjoy

- "Having teeth cleaned!"
- "Having unwanted behaviours challenged."

What we learned from parent carers

- All parents were satisfied or very satisfied with the services they received.
- All parents said staff was well-mannered and helpful
- Parents liked that all the services were in same building.

"After GCSE, parents need to be more involved with careers officers at school so they are in the know about what options their children have."



Use of resources to support the Plan...

Many organisations are responsible for providing services to children and young people. The Government, through direct grants, Local Authority, Learning and Skills Council and the Primary Care trust make a significant financial contribution to the delivery of services to children and young people, of which there is:

- Just over £157 million in direct grants for schools related expenditure of which £129 million is delegated to individual schools. This funding also supports some centrally retained responsibilities including funding fees for specialist placements in independent special schools
- School support and intervention amounts to £2.5 million
- Just over £8 million for Early Years (including Sure Start Local Programmes and Children's Centres) and £2.2 million for funding nursery education in the private and voluntary sector
- Approaching £28 million on children and young people's social care services
- £2.4 million for Connexions on advice, guidance and information to 14-19 year olds
- £3 million on family learning and study support and youth services
- Just over £4.8m million on the Pupil Referral Unit and behaviour support
- 4m on locality services
- £1.9m is spent through the Youth Offending services to children and young people who have offended or are at risk of offending
- £1m grant funding for voluntary and community groups to provide services for children and young people
- Extended schools 720k.



Narrowing the gap...

Our achievements to date and key actions for 2008-2009

The following areas of good performance were highlighted by Ofsted and the Audit Commission during our Inspection processes in 2007:

- outstanding ambitions to improve the quality of life for CYP in Derby
- effective partnership working and joint commissioning arrangements
- good collaboration to improve the health of CYP
- robust review procedures in place to safeguard children
- improvements in results at Key Stage 3 and 4.

This is a positive reflection on our Children's Trust Arrangements and during 2008 we have built the following identified areas for improvement into our key actions:

- make better use of available data to evaluate progress and plan improvements in relation to CYP with learning difficulties and/or disabilities
- ensure there are clear strategies to evaluate the effectiveness of all initiatives relating to reducing teenage pregnancy and improving sexual health
- revise the methods for collecting and analysing data, to ensure that actions to improve housing capacity for young people are targeted accurately
- increase the opportunities for more flexible college programmes and for work-based learning for young people with LDD.

The national Children's Plan (2007) identifies a new leadership role for Children's Trusts in every area and requires a step change in aspiration and impact. For our partnership this will bring along new leadership challenges but also new opportunities. The following pages identify our key actions for 2008 in each Outcome Group area, supported by quotes from CYP and achievements over the last year. This supports the step change required for us to make a real difference to the lives of CYP.



Our priorities, key actions and targets...

be healthy

- physically healthy
- mentally and emotionally healthy
- sexually healthy
- healthy lifestyle
- choose not to take illegal drugs.

Key Achievements

- Achieving Beacon Status for Healthy Schools Programme and innovative work in Citizenship Enhancements
- Parenting Strategy and additional resources for a number of parenting initiatives including Health Led Family Nurse Partnership
- Partnership working to deliver some of the key challenges including teenage pregnancy work with difficult to reach groups: 'Angels' and 'Spaceman', counselling services for BME groups through the SPACE and enhanced Child and Adolescent Mental Health Service (CAMHS) service at Moorfields
- A review of the Teenage Pregnancy Strategy was commissioned by the City for Children's and Young People's Executive in January 2007, that led to establishment of Teenage Pregnancy Commissioning Board and a new supporting structure has been established
- The CAMHS Partnership has completed a Commissioning Plan with continued progress made towards comprehensive CAMHS
- Specialist treatment services in Derby continue to meet national targets and are providing high-quality support for young people requiring treatment. There is strong partnership working that contributes significantly to the effective delivery of drug treatment, drug education and targeted prevention
- The health of CiC continues to improve
- Reduced waiting times for specialist CAMHS.



Next Steps and Key Actions

Parenting priority

- Improve information, advice and support services to parents of all children at critical stages of a child's key development/milestones and for children with long-term conditions and chronic illness
- Support parents to address sexual health relationships and emotional health and well-being issues, particularly around substance misuse/CiC/disabled children.

Safety, belonging and being valued in the community priority

- Increase participation of children and young people in Healthy Schools Enhancement activities on Citizenship, anti-bullying and schools councils, through the Healthy Schools Programme
- To engage children and young people in the recruitment of staff, monitoring and evaluation of services.

Building ambition, aspiration and achievement priority

- Early identification of CYP who are vulnerable and at risk including teenage parents and CiC
- Early intervention and access to opportunities - targeting hard to reach children, young people and families in localities, with a specific focus on teenage parents.

Physical, emotional well-being and safe choices priority

- Enable and encourage physical activity and healthy lifestyle from a very early age including from the ante-natal period – raise awareness of early interventions and support for parents and carers
- Enhance provision of CAMHS intervention services in the community.



"School nurses should be able to give out emergency contraception"

"It's good to have speakers in school about Space Project, drink and drugs."

"I like going to the dentist on a school day."

"It helped me with problems I am facing and also teaches you how to solve problems that may occur"

stay safe

- safe from harm
- safe from accidents
- safe from bullying and discrimination
- safe from crime
- have security and stability.

Key Achievements

- Review of safeguarding procedures completed
- Arrangements for Child Death Review Process in place
- Continued progress on ensuring all allegations against staff are well managed
- Good links are established with Derby Safeguarding Children's Board (DSCB) in relation to the implementation of ContactPoint
- Work has begun on the implementation of the Independent Safeguarding Authority
- Safe reduction in the numbers of children on the Child Protection Register
- Multi-Agency Risk Assessment Conference (MARAC) has been established in Derby
- The number of children with child protection plans as a result of domestic violence has reduced
- 1200 staff have been trained on CAF
- Developed the plan for locality-based integrated social care teams
- Lead Professional role continues to be developed
- Equality Impact Assessment has been applied to DSCB procedures
- DSCB Leaflets now available in four languages
- Serious Case Review Processes have been implemented and are reviewed by DSCB
- Missing Children Protocol completed.



Next Steps and Key Actions

Parenting priority

- Provide timely and appropriate responses to parents of vulnerable children and children in need
- Provide safeguarding information for children, young people and parents.

Safety, belonging and being valued in the community priority

- Promote safe and secure care for CYP at home
- Promote safety and security for CYP at school and in the community.

Building ambition, aspiration and achievement priority

- Promote school attendance for all CYP
- Improve ability to identify vulnerable CYP at an early stage and provide appropriate services.

Physical, emotional well-being and safe choices priority

- Provide a range of information for parents, young people and children aimed at supporting a safe and enjoyable childhood
- Supply providers of childhood focused faith, sporting and leisure activities with safeguarding information.



"Don't like the older lads fighting/drinking." (older lads 15 – 18yrs)

"They could get a police officer to patrol the area to make sure nothing bad happens."

"Since my mum's gone to parenting classes she's been able to cope with my behaviour better and I have incentives to control my anger."

"Children in care are listened to, some are not. If I've got something to say I will say it to my foster mum."

enjoy and achieve

- attend and enjoy school
- achieve primary and secondary school standards
- achieve personal and social development
- enjoy recreation.

Key Achievements

- Improvement in results at Key Stage 3 are good in English and mathematics, being above national averages and statistical neighbours. Pupils' progress between Key Stages 2 and 4 are above the national averages, with a number of Children's Fund initiatives in place to help the transition between Years 6 and 7.
- Good progress being made in attendance, behaviour and exclusions.
- The Local Authority was successful in securing a capital bid for a new 100-place special school, and a new KS3 pupil referral unit. Further additional investment has been made in the development of provision for pupils with autistic spectrum disorder to reduce the reliance on out-of-authority placements.
- Significant improvements have been made in CiC gaining educational qualifications during 2006/07.
- Developed robust systems to speed up admissions, reduce exclusions and encourage attendance - within Derby and with other authorities where our CiC live.
- Training and networking to increase awareness of the importance of education for CiC - for professionals across relevant agencies, especially social workers, school staff and carers.
- The new 'STePS' service (Specialist Teacher and Psychology Service) was established in November 2006, bringing together those services focused on disabled children within the Specialist Services Division.
- The streamlined Disabled Children's Strategic Planning Group was launched in July 2007.
- Multi-agency partnership meetings established to ensure seamless transition from children to adult services for disabled children.
- Three special schools highlighted as good practice by '4Children' in a report commissioned by the Regional SEN Partnership as offering the core offer for extended schools
- All secondary schools have a disability equality scheme.



Next Steps and Key Actions

Parenting priority

- Improve information, advice and guidance for parents (especially who are disadvantaged), in relation to:
 - childhood development for ages 0-3 years
 - learning in school and beyond
 - parent-parent mentoring.
- Provide better information and intervention on managing transitions, especially for children with learning difficulties and disabilities:
 - between educational settings
 - into foundation stage
 - beyond statutory school age.

Safety, belonging and being valued in the community priority

- Raise the level of inclusion of CYP in schools and all services
- Maintain stability of placements for CiC to allow for greater life opportunities.

Building ambition, aspiration and achievement priority

- Support schools, providers of education and training to deliver their duties in relation to community cohesion
- Support all schools and settings in raising standards by providing an enjoyable, broad and relevant curriculum for all children, especially those with learning difficulties and disabilities.

Physical, emotional well-being and safe choices priority

- Develop affordable, accessible and enjoyable recreational activities for CYP in settings of their choice, including outdoor education
- Develop increased youth opportunities that are youth-led.



"European borders have opened so we get to play football with Eastern Europeans. They learn from us and we learn from them."

"You have to be in school at half past eight and you are there til quarter to four, with only half an hour for lunch and the queues are too long and stressful."

"Schools are good for doing anti-bullying and racism stuff."

make a positive contribution

- develop self confidence
- engage in law abiding and positive behaviour
- develop positive relationships
- develop enterprising behaviour
- engage in decision making.

Key Achievements

- JAR findings were successfully disseminated to CYP.
- CYP are actively involved in helping to plan and review provision at both strategic and operational levels.
- There is a strong commitment to encouraging participation in voluntary activities, with over 3,200 children and young people involved.
- There is excellent access to mainstream leisure activities for children and young people with LDD.
- The Youth Service is effective in reaching a larger than average proportion of young people.
- Bullying is recognised as a significant issue but is being tackled vigorously through a range of imaginative initiatives which young people value highly.
- Derby City Youth Offending Service is fully integrated into Derby Community Safety Partnership, enabling joined-up service delivery in, for example, prolific and other priority offending, substance misuse services and neighbourhood working.
- The Youth Offending Service has succeeded in reducing the numbers of first-time offenders and re-offenders and in ensuring that the proportion of looked after young people receiving a final warning or reprimand are lower than average nationally and the authority is the lowest in its statistical neighborhood group for these measures.
- Derby has shown continuous improvement for the last three years in reducing the numbers of CiC who are involved in crime.
- Figures submitted to the DCFS in October 2006 show the percentage of CiC aged 10 or over, subject to a conviction, final warning or reprimand, was 6.7%, compared to a national average of 9.6% and a statistical neighbour average of 11%. Derby is the best performing authority against this measure within its comparator group.
- At least a quarter of 13-19 year-olds access high-quality outdoor education and music recording facilities, youth theatre, sports facilities and residential opportunities. Every secondary school participates in the Duke of Edinburgh's Award Scheme.



Next Steps and Key Actions

Parenting priority

- Enable parents to access parenting training that promotes positive relationships and minimises the risk of anti-social behaviour amongst CYP
- Target support to identified families where there are children at risk of offending.

Safety, belonging and being valued in the community priority

- To reduce the incidence of bullying in both schools and non-school settings
- To promote anti-bullying strategies in schools and other settings.

Building ambition, aspiration and achievement priority

- Increase the access to appropriate positive activities of vulnerable groups and support CYP to be involved in decision making processes
- Ensure the effective alignment of Positive Activities for Young People (PAYP) strategy across partnerships.

Physical, emotional well-being and safe choices priority

- Ensure the alignment of universal and targeted prevention strategies across partnerships and further improve co-ordination
- Develop cross-partnership steering group to shape prevention activities across the city.



"Gangster looking people may not get listened to as much as someone who wears glasses and looks intelligent like me."

"Young people are listened to but it doesn't help with all the negative media surrounding young people and gives adults a negative stereotype that some teenagers are good and bad."

"The school councils are good at helping people who are in an awkward situation."

achieve economic well-being

- engage in further education, employment or training
- ready for employment
- live in suitable homes and communities
- access to transport
- live in households free from low income.

Key Achievements

- Year-on-year achievement of target to reduce the number of young people in NEET group – 2010 target 7.4%.
- November 2007 target 7.8% achieved 7.2%.
- Increase in 14-19 pathways and progression routes through partnership and collaborative working across a range of learning providers and support services.
- Introduction of accredited life-skills programme through the YMCA hostel.
- Secured entitlement for Education Maintenance Allowance.
- Improving childcare provision - sufficiency audit of childcare places across the city – report to be published April 2008.
- On target to meet statutory childcare duty.
- Childcare strategy and action plan completed, reducing the number of children living in low income or workless households.
- Review of Jobcentre Plus outreach work linking with localities through children's centres and more structured/ partnership agreements.
- Identification and targeting of client group that would not normally access JobCentre Plus services.
- Mandatory interviews taking place by JobCentre Plus in children's centres, particularly where high numbers of lone parents.
- Job MAETs (multi-agency employment teams) programme to engage and support adults back in to work.
- Reduction in the number of young people assessed as statutorily homeless due to prevention focus of homelessness.



Next Steps and Key Actions

Parenting priority

- Increase parents' awareness of the help available to them to support their children, particularly with option choices at age 14 and 16
- Improve people's employment opportunities in order to reduce the proportion of children living in households where no-one is working.

Safety, belonging and being valued in the community priority

- Improve access to services, leisure and learning opportunities for CYP by ensuring that they contribute to transport developments in the city
- Seek feedback from targeted groups of young people: for example those over-represented in the NEET group to identify gaps and improvements needed in current provision.

Building ambition, aspiration and achievement priority

- Provide high-quality Information Advice and Guidance (IAG) to national standards to enable young people to make effective choices about learning, career and lifestyle
- Improve support for vulnerable groups of young people to overcome barriers to learning by addressing gaps in current provision with specific reference to employment, education and training.

Physical, emotional well-being and safe choices priority

- Research and carry out a feasibility study to develop a night-stop service in the city to provide short-term emergency accommodation and education for young people
- Research and carry out a feasibility study on the possibility of introducing 'crash pads' into Derby for young people to provide respite accommodation for a four-week period.



"The Space and Connexions are excellent because the people take time to get to know you, don't judge you, try and understand you."

"Youth workers and Connexions come into college often to give us advice on going to University."

"Connexions - good at finding apprenticeships and jobs and good to talk to."

"If you concentrate on your lessons and do well in Year 11 you can get a good job."

How will we deliver our Key Actions?...

We will deliver our key actions through:

- Children's Trust governance arrangements
- Commissioning arrangements and structures
- Performance management
- Pro-active engagement of children, young people and parents in the evaluation of services
- Workforce development
- Integrated neighbourhood working.

Children's Trust Governance Arrangement

Derby has a very robust Local Strategic Partnership – the Derby City Partnership, centred on five 'cities', of which the City for Children and Young People Executive represents our Children's Trust Arrangements, this sits alongside our Safeguarding Children Board. Our Partnership has been re-focused to strengthen our membership, governance and commissioning arrangements with the establishment of a Joint Strategic Commissioning Board and implementation of a commissioning strategy. Links are well established with other strategic partnerships in the city such as Supporting People and Valuing People. (Children's Trust Governance structure – Appendix A)

Commissioning arrangements and structures

The Children's Trust Joint Strategic Commissioning Board uses the nine steps approach to effective Commissioning outlined in the Joint planning and Commissioning Framework for Children, Young People and Maternity Services which underpins commissioning activity at all levels within our partnership.

The Joint Strategic Commissioning Board will determine the best use of available resources between partners at a strategic level, using analysis of present and future needs and resources, past performance and best practice elsewhere.

Specialist Commissioning Groups such as the Integrated Disabled Children's Planning Group, CAMHS Partnership Commissioning Group, Teenage Pregnancy Commissioning Group commission more specialist and complex services and forward highlight/exception reports to Joint Strategic Commissioning Board. The Locality Planning structure will focus on the needs of CYP within a geographical area or vulnerable group and will maintain the two dimensions of universal and specialist services within a locality area. (Joint Commissioning Structure – Appendix C)

The five outcome groups of:

- Be Healthy
- Stay Safe
- Enjoy and Achieve
- Making a Positive Contribution
- Achieve Economic Well-being

have responsibility for identified priorities and actions for each outcome area and monitoring and reviewing key actions in this plan.

The Equality Impact Group

Fundamental to the success of the CYPP is to examine the priorities and key actions as they relate to removing inequalities, with specific reference to inequalities faced due to race, disability, sexuality, age, gender, religious belief and economic background. The Equality Impact Group provides a strategic overview and quality assurance guidance, reporting on equality impact progress to the Partnership.

Performance Management

The success of our CYPP will be judged on achieving improved outcomes, and we will do this by:

- performance reporting
- internal scrutiny and external inspection
- accountability to CYP
- accessing impact - whether the lives of CYP are improved as a result of this plan.

The performance framework is in place and will focus on specific measurable targets for action and underpinning priorities for each of the five outcome groups. The CYPP performance framework and delivery plan will define roles and responsibilities for lead officers within each outcome group and promotes clear ownership of actions, targets and priorities underpinning each outcome area. (Please refer to CYP Action Plan 2008-2011)

Pro-active engagement of Children, Young People and Parents

We will continue to pro-actively engage children, young people and parents in contributing to needs assessment, monitoring, evaluation and reviewing services through diverse consultation and participation methods. The pro-active engagement of children, young people and parents in the review of projects and services will be clearly stated in future Service Level Agreements, Contracts and Funding Agreements



Workforce Development

Workforce development and learning is integral to improving standards and the delivery of high quality services that respond to the changing needs of children, young people, parents and the communities we serve. We are committed to supporting the workforce from across the partnership to develop core skills and knowledge. The priorities for Derby CYP Strategic Workforce Development Group for the next three years are:

- Common Core of Skills and Knowledge of the Children's Workforce
- Safeguarding Training
- Improving Information Sharing and Management – Integrated Processes including:
ContactPoint, Common Assessment Framework (CAF) and e-CAF, Lead Professional and Information Sharing.



Integrated locality working

Integrated locality working has been established in Area 1 of the city and plans are now being developed to extend this across Derby. The co-location of health visitors, social workers, youth workers, family support workers, education welfare officers and Connexions advisers improves the quality of the service available to children, young people and families in the local area. Information is being shared in the right way and families are getting better services as a result. Less time is spent on repeating assessments and more time is spent providing services. Closer working by professionals in the Area 1 Trailblazer has meant that there is a better understanding of which children, young people and families need extra help and how best to provide that help. All of this means that staff are also improving their local knowledge and supporting CYP to access a wider range of services. Staff in Area 1 say:

"One of the benefits of working within Area 1 is developing close links with education, health and professionals from other local agencies which will ultimately benefit families." (Social Worker)

"I have gained an increased knowledge of the services available/ accessible to young people, families and the community"
(Youth worker)

"Although managing different service areas has been a steep learning curve, I'm enjoying it and am really motivated by seeing young people and families benefit from joint working"
(Team Leader – seconded by Connexions Derbyshire Limited)

"Although at first very challenging I would not want to work outside Area 1, it would be a backward step. Integrating services is better for staff, children, young people and families."
(Area 1 Health Practitioner)

Glossary

A

Aimhigher

Aimhigher campaign encourages young people to think about the benefits and opportunities of higher education (HE), especially young people with no tradition of higher education.

Aiming high for young people

A ten-year strategy to engage young people in positive activities.

Aiming high for Disabled Children – Better Outcomes for families

Government strategy to improve outcomes for disabled children.

Area One Trailblazer

Intragrated Children's Services launched in November 2006. The service brings together family support staff, youth services, Connexions, primary health care, education welfare and social care into co-located teams.

C

CAF - Common Assessment Framework

An assessment tool for use by all practitioners to help them assess any additional needs for children, young people and their families at the earliest opportunity. It gathers information on the needs and strengths of the child or young person through the engagement of CYP parents and carers.

CAMHS - Child and Adolescent Mental Health Services.

CiC - Children in care

Childcare Strategy

Government's ten-year Strategy for Childcare, Choice for Parents, the Best Start for Children.

Children's Centre

Provide early education and daycare, health, family support and other services to families with children under the age of 5.

Commissioning

The planning cycle of identifying and meeting need.

ContactPoint

A basic online directory, available to authorised staff who need to do their jobs. It is key part of the national Every Child Matters programme to improve outcomes for children. It will be the quick way for a practitioner to find out who else is working with the same child or young person, making it easier to deliver more co-ordinated support.

Connexions

An information, advice and support service for all 13–19 year-olds and for people up to 25 years old who have learning difficulties or disabilities. Its aim is to help young people take part in some form of employment, education, or training so that they can fulfil their potential and have a better future.

Corporate Director for Children and Young People

The Director provides professional focus for children's services, ensuring that a clear strategy for improving outcomes for all CYP within the area is developed.

CVS - Council for Voluntary Service.

CYP - Children and Young People.

CYPN - Children and Young People's Network

CYPP - Children and Young People's Plan

D

Decent Home Standard

A decent home will pass four tests: it must meet the current statutory minimum standard for housing, it must be in a reasonable state of repair, it must have reasonably modern facilities and services and it must provide a reasonable degree of thermal comfort.

Derby City Inclusion Strategy

Inclusion in education is a process of maximising participation and removing barriers to learning for all CYP in their local educational setting.

Disabled Children and Young People

Those children and young people whose level of functioning is significantly different from children in a mainstream setting without support, especially those who require a level of multi-disciplinary input from statutory and voluntary agencies and for whom co-ordinated planning of such input is essential.

E

EDCM - Every Disabled Child Matters.

Every Child Matters: Change for Children

The Government's aim is for every child to have the support they need to: be healthy, stay safe, enjoy and achieve, make a positive contribution and achieve economic well-being.

Extended Schools

Provide a range of services and activities, often beyond the school day, to help meet the needs of children, their families and the wider community.

Equality Impact Assessment

An Equality Impact Assessment considers 'if we do this, how will it affect disabled people, minority ethnic communities, women, people with particular religious beliefs, lesbians, gay men, people who are bi-sexual, or transgender people or perhaps younger or older people?' If we don't think about these things we will not reach our equality goals.

Equality Impact Group

The Equality Impact Group provides a strategic overview and quality assurance on equality impact progress.

F

FIP - Family Intervention Project

An intensive multi-agency support programme for vulnerable families that have a history of persistent anti-social behaviour and are at risk of losing their homes. It includes one-to-one and family sessions.

FNP - Family Nurse Partnership

This is a health-led pilot preventative programme providing support and parenting education through intensive home visiting to 100 of the most vulnerable first-time teenage parents-to-be in Derby from 14 weeks pregnancy until their child is two years of age. It is a proven programme that aims to improve health and social outcomes.

H

Healthy Schools Programme

Includes eight key areas of activity: personal, social and health education; citizenship; drug education including tobacco and alcohol; emotional health and well-being; healthy eating; physical activity; safety; sex and relationship education.

J

JAR - Joint Area Review:

The integrated process through which OFSTED inspect statutory and voluntary services for children and young people.

K

KITE - Kids in their Environment. The Kite team is based at Derby City Children's Hospital and the Community Support Team has 30 hours per week to work with disabled children with a life limiting condition.

L

LAA - Local Area Agreement.

A way of delivering better local service outcomes through increased co-ordination between central government, local authority services and their partners.

Lead Member for Children and Young People

The Lead Member for Children and Young People is an elected member of the City Council, providing political focus for children's services, ensuring that a clear strategy for improving outcomes for all CYP within the area is developed.

Learning and Skills Council

The Learning and Skills Council plans and invests in high-quality education and training for young people and adults that will build a skilled and competitive workforce. Over the period of this plan, work will begin on the transfer of LSC funding and responsibilities for 11-19 year-olds to Local Authorities.

Local Safeguarding Children Board

The key statutory mechanism for agreeing how relevant organisations in each local area will co-operate to safeguard and promote the welfare of children in their locality and for ensuring the effectiveness of what they do.

LP - Lead Professional

Every child who receives support from more than one targeted service should have an identified Lead Professional.

M

MAPPA - Multi-Agency Public Protection Arrangements

Multi Agency Public Protection Arrangements exist to deal with the risks that may be presented by some offenders who are thought likely to cause serious harm. They are few in number.

MARAC - Multi-Agency Risk Assessment Conference.

Comprises of a multi-agency group that meets on a monthly basis to identify victims of domestic abuse who are most at risk of experiencing violence in the future.

N

National Service Framework for Children and Young People and Maternity Services

Long-term strategy from Department of Health that sets out standards for children's health and social services.

NEET- Not in education, employment or training.

O

OfSTED - The Office for Standards in Education (England).

The Inspectorate for children and learners in England.

Outcome Groups

Groups with representatives from organisations delivering services to children and young people examining the five outcomes of the Every Child Matters.

P

PAYP - Positive Activities for Young People.

A government programme for young people aged 8-19. It offers activities for young people at risk of social exclusion, crime or anti-social behaviour.

PEEP - Peers Early Education Partnership

The Peers Early Education Partnership is an early learning intervention which works with parents and children from birth to five with the aim of increasing parent/carers participation in their children's early development and learning.

Public Law Outline

The Public Law Outline aims to reduce unnecessary delay and is designed to promote better co-operation between all parties involved in care and supervision cases.

S

STePS - Specialist Teacher and Psychology Service.

Substance Misuse

Substance-taking which harms health or social functioning. Substance misuse may be dependency (physical or psychological) or substance-taking that is part of a wider spectrum of problematic or harmful behaviour (Health Advisory Service 1996). Substance misuse as defined here will require appropriate treatment.

Substance Use

Substance use is the taking of a substance which requires a lower level intervention than treatment. Harm may still occur through substance use, whether through intoxication, legal action against user or health problems, even though these might not be immediately apparent. Substance use will require the appropriate provision such as education, advice and information and prevention work to reduce the potential for harm.

T

Teenage Pregnancy Strategy

A national ten-year strategy aimed at reducing the risk of long-term social exclusion of teenage parents by reducing under-18 conceptions and improving support to teenage parents.

Y

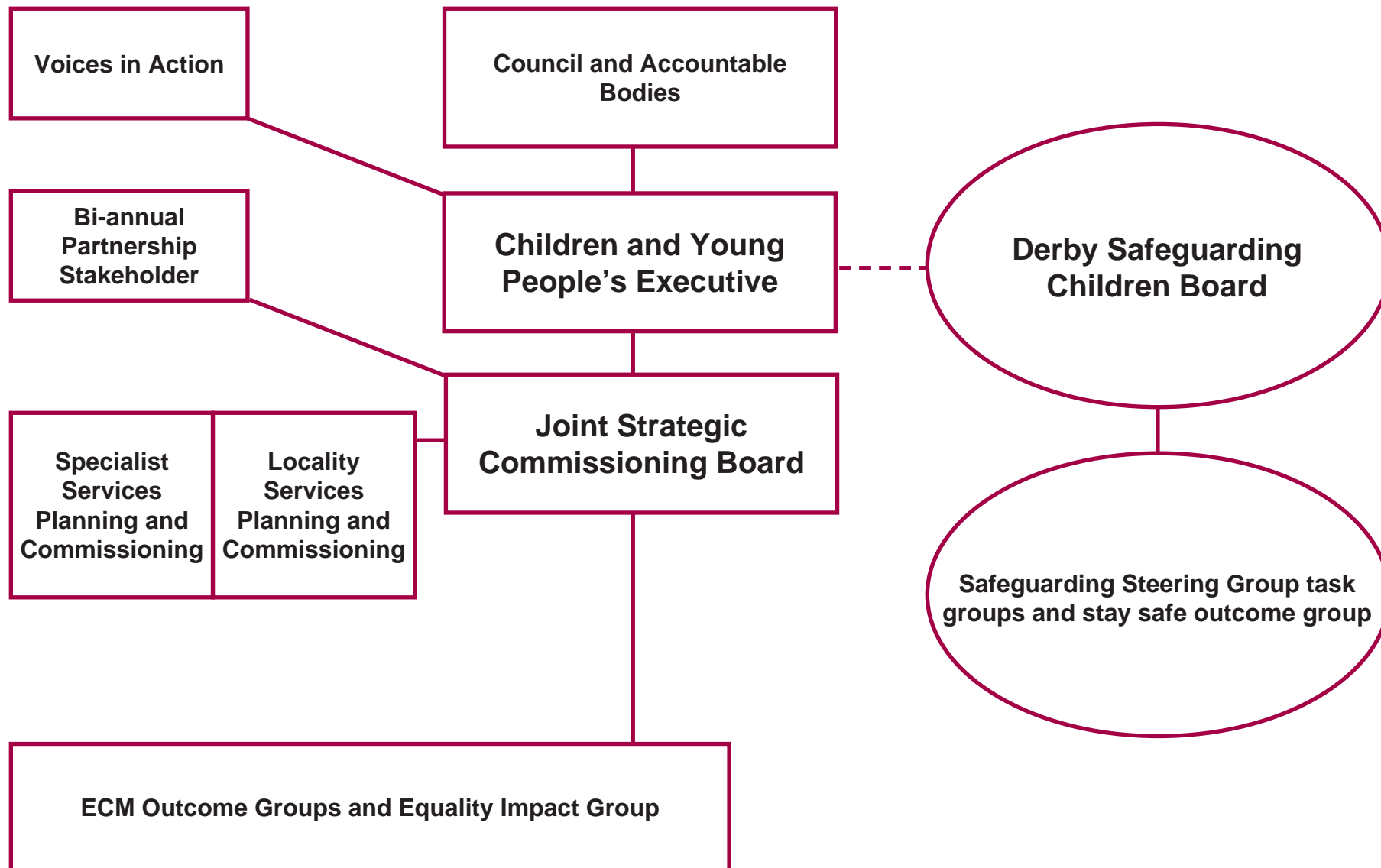
Young Addaction

Young Addaction Derby is a free and confidential service for young people aged 18 and under who are experiencing difficulties with drugs and alcohol use or who have concerns about another persons' drug and alcohol use.

Youth Opportunity and Capital Fund

The Youth Opportunity and Capital Funds provide budgets for young people to decide how money should be spent on positive activities and youth facilities in their area.

Appendix A - Children's Trust Governance Structure



Appendix B - Range of services provided to Children, Young People and Families

Adult and Community Learning

- Provided through schools, Derby College and the Derby Adult Learning Service, which has eight learning centres across the city.

Connexions

- Connexions service for young people provides information, advice, guidance and support for young people aged 13-19 years.

Children Centres

- Provide early education and daycare, health, family support and other services to families with children under the age of five.

Children's Social Care Services

- Provided through the City Council's Children and Young People's Department.
- Services include reception and assessment, family support and specialist services including fostering adoption and children's homes.

Derby Community Safety Partnership

- Aims to make sure that people living, visiting and working in Derby feel safe and confident in their daily lives. Areas of service delivery include Youth Offending, Drug Strategy, Crime and Disorder Reduction Partnership, Domestic Violence Partnership, Anti-Social Behaviour Team and the Area and Neighbourhood Team's across the city.

Derby City Primary Care Trust (PCT)

- Lead for Primary Health Care
- There are 36 General Practitioner (GP) surgeries providing local primary health care.
- A multi-professional learning disability therapy service, for children attending special schools in Southern Derbyshire area.
- Short breaks for children with learning disabilities through a Section 31 Partnership Agreement, with the Local Authority.
- Commission's mental health provision.
- Primary health care workers provide specialist health-visiting services for children with special needs.
- Conception and sexual health services.
- Family Nurse Partnership pilot has informed how we develop innovative ways to co-ordinate systems and services to focus on families at risk.
- Children specialist community health services.

Derby Foundation Hospitals

- Children's Acute hospital services.
- Specialist children's health services.
- Care for children with life limiting and life threatening conditions including complex and enduring health needs.
- Community and hospital midwifery services including neonatal intensive care.
- Children's Clinical Psychology Services.

Derbyshire Mental Health Services NHS Trust

- Provides mental health and learning disability services across Derbyshire and also provides Child and Adolescent Mental Health Services (CAMHS) in South Derbyshire.

Derbyshire Police

- The Derby & Derby South area is referred to in policing terms as 'D Division'. It includes Derby City Centre as well as Allestree, Chaddesden, Mickleover and Swadlincote. There are 19 safer neighbourhoods teams across Derby City – Mickleover, Littleover, Sinfen, Austin, Peartree/Normanton, Stockbrook, Spondon, Derwent, Oakwood, Chaddesden, Allestree, Mackworth/Morley, Darley, City Centre, Osmaston, Boulton, Alvaston, Chellaston, Shelton Lock, and Allenton.

Early Years and pre-16 education

- 402 early years settings: eight nursery schools; 78 primary schools; 14 secondary schools (including an academy) of which 12 have enhanced resource provision for pupils with special needs; six special schools; a non-maintained school for pupils who are deaf or who have a hearing impairment; and one pupil referral unit.

Extended schools

- Extended schools offer access to a range of services for children, young people, their families and communities often beyond the school day

Family learning

- Provided by the Childcare and Family Learning Service with 36 Learn Direct centres.
- Department of Work and Pensions provision is delivered by a network of 19 providers, some with Learning and Skills Council contracts.

Housing

- Housing Options Centre provides holistic housing advice and homeless services for young people aged 16 onwards.

Integrated Children's Services

- Operating in one area of the City.
- The integrated team provide health, social care, education welfare, Connexions and youth support services to children and young people.
- Derby was a targeted Youth Support Pathfinder, and this is now supporting the delivery of the 11-19 years service.

The Light House

- Jointly funded and managed by the Council and Derby City PCT, providing an integrated service for profoundly disabled children with complex needs and for those with moderate to severe learning disabilities.

Post-16 education

- This is provided through sixth forms in seven of the city's secondary schools, Derby College and work-based learning providers.

Voluntary and Community Sector (VCS) support services

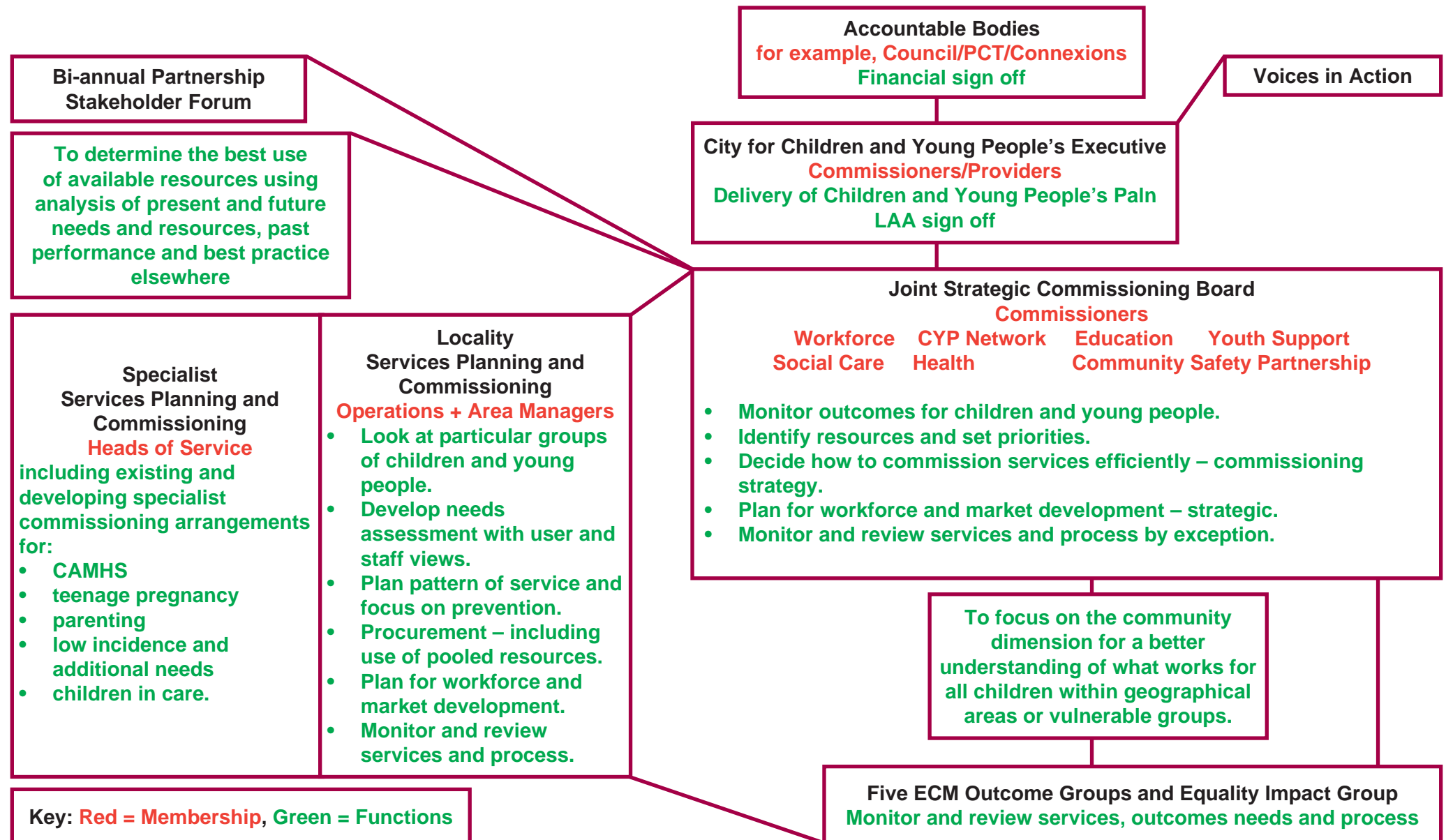
- Provide a broad range of preventative and targeted support services to children and young people across Derby.
- Children and Young People Service has funding agreements and contracts with the VCS to provide services to children, young people and parents in the following areas: family support, advocacy, support to young carers, disabled children, children from BME communities, children at risk of sexual exploitation, foster care support network befriender scheme, telephone helpline and counselling services, Outreach and Aftercare Services and information services.

Work-based training for young people

- Provided by a network of 12 providers and Derby College.
- Six providers have 10% of their learners living in Derby City wards.
- Entry to Employment (E2E) provision is managed by Learning and Skills Council (LSC) through direct contracts with E2E providers, the majority of which are core funded work-based learning or further education providers.



Appendix C - Joint Commissioning Structure



Appendix D - Joint Commissioning Strategy

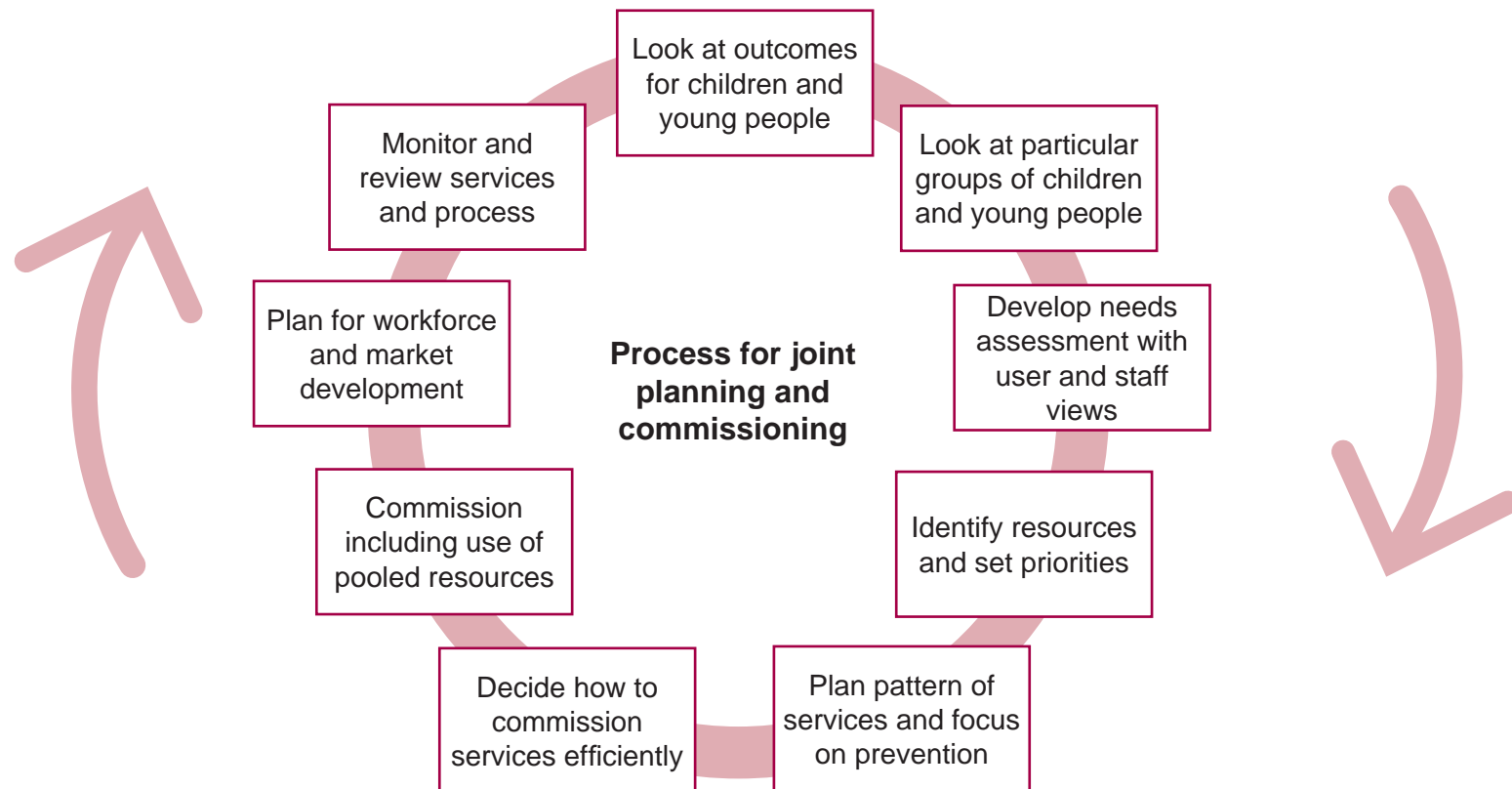
Vision

This commissioning strategy offers a framework to deliver the vision of Derby's Children's and Young Peoples Plan:

Building a brighter future for children and young people that provides a healthy, safe and happy childhood, with the opportunity to achieve their full potential.

The Children Act 2004 outlines an overview for joint planning and commissioning and sets out the strategic planning and commissioning arrangements that need to maintain and improve service delivery while simultaneously helping to bring about fundamental changes in the way those services are delivered.

The nine steps approach to effective Commissioning – Joint planning and Commissioning Framework for Children, Young People and Maternity services underpins commissioning activity at all levels within the Children and Young People's Partnership.



'Commissioning is the process of specifying, securing and monitoring services to meet people's needs at a strategic level. This applies to all services whether they are provided by the local authority, NHS other public agencies or by the private or voluntary sector.' (Audit Commission Making Ends Meet, Oct 03)

Commissioning is more than procurement, purchasing or contracting, although all three are essential stages of the wider commissioning process

What is the value of Commissioning?

- All decisions are based on a clear rationale for improving outcomes for children and young people
- Ensures that outcomes are sustainable
- All stakeholders including children, young people, their families, carers and communities participate meaningfully
- Provides an agreed strategic plan for a locality or group of children and young people
- Move's resources to ensure preventative and early intervention
- Offers better value for money
- Strategic decisions are made independently from providers and reflect the Derby context.

Commissioning to meet levels of Need

Responsibility for commissioning must be taken at the appropriate level

- **Individual level - this is an example of procurement**

To meet individual needs, services can be jointly commissioned or procured by the individual, a family carer or children's services worker. For example by a direct payment or budget holding lead professional or in partnership with the multi agency core team.

- **Locality level**

To focus on the community dimension for a better understanding of what works for all children and young people within geographical areas or vulnerable groups. This will include maintaining the two dimensions of universal and specialist needs within a locality area. For example Area and Neighbourhood working, a school cluster area; practice based commissioning or 'Derwent New Deal' area.

- **Strategic level**

To determine the best use of available resources between partners at a strategic level, using analysis of present and future needs and resources, past performance and best practice elsewhere.

- **Regional level**

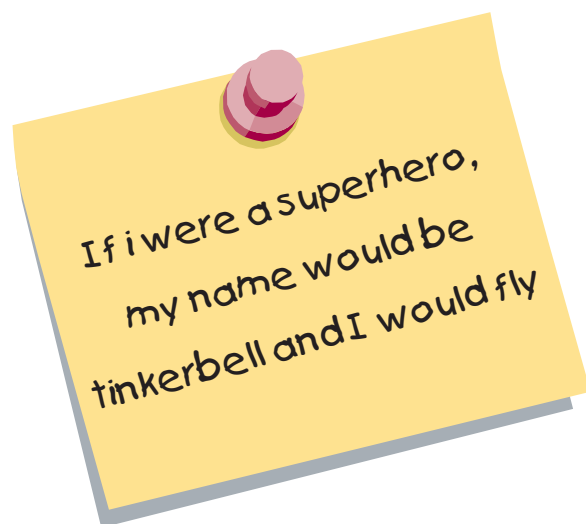
More specialist and complex needs, with a low service volume maybe most effectively commissioned in collaboration with other regional partners

Commissioning Principles

- Put the needs of the user first and ensure that they are engaged and consulted
- Ensure that commissioning is led at the highest level in the Children and young People's partnership
- Provide preventative services at the earliest appropriate moment
- Work in partnership to maximise effectiveness and reduce barriers to services
- Ensure that people have the right skills to undertake the work
- Look beyond the immediate circumstances of current service users and develop a long term view of individual and community needs
- Work constructively with providers at the earliest opportunity
- Continuously evaluate and develop services and ensure they represent best practice
- Spend money wisely to secure effective and efficient services.

The Stages of Commissioning

Further guidance and support on the Nine stages of Commissioning from the stages of data collection and needs analysis, through the stages of planning services and engaging with the market, right through to reviewing the impact of decisions taken upon the lives of children, young people and their families; can be found in Regional Framework to Support Commissioning Handbook- www.regionalcommissioning.co.uk. This Handbook and toolkit was developed in the East Midlands with active participation from Derby's Children and Young People's Partnership.



Appendix E - Every Disabled Child Matters Local Authority Charter



By January 2008, we will ensure that in our authority...

- ☒ We know how many disabled children live in our area and that all agencies in our area are planning services on the basis of this knowledge.
- ☒ There is a key worker service in our authority providing support to families who are accessing more than one specialist service.
- ☒ Our parent partnership service is sufficiently resourced to provide advice, information and support to parents of disabled children and young people who have been excluded from school.
- ☒ Parents and carers in our area are getting accurate and timely information and advice on the full range of services available to them and their families.
- ☒ All staff have received both disability equality training and training to ensure that they have core competencies to work with disabled children; relevant staff have received specialist training and other staff know how to contact them for information.
- ☒ Disabled children are involved in drawing up our Disability Equality Scheme and also in monitoring its effectiveness in eliminating discrimination.
- ☒ Our Children and Young People's Plan explains how we will provide specialist services and also make all universal services including extended schools and children's centres accessible to disabled children.
- ☒ Our Local Area Agreement includes targets for the level of service to be delivered to families with a disabled child.
- ☒ Disabled children and families are involved in the planning, commissioning and monitoring of services in our area, including both specialist and universal services.

Councillor Sara Bolton
Cabinet Member for Children and Young People



**We can give you this information in any other way, style or language that will help you access it.
Please contact us on 01332 716924 Minicom 01332 716709 Fax 01332 716920**

Hindi

हम आपको यह जानकारी किसी दूसरे तरह और ढंग से या दूसरी भाषा में भी दे सकते हैं जिससे आपको इसे प्राप्त करने में मदद मिल सकेगी. कृपया हमसे इन नंबरों द्वारा संपर्क कीजिए 01332 716945
मिनीकाम 01332 716709

Polish

Aby ułatwić Państwu dostęp do tych informacji, możemy je Państwu przekazać w innym formacie, stylu lub języku.
Prosimy o kontakt: 01332 718010 Tel. tekstowy: 01332 716709

Punjabi

ਇਹ ਜਾਣਕਾਰੀ ਅਸੀਂ ਤੁਹਾਨੂੰ ਕਿਸੇ ਵੀ ਹੋਰ ਤਰੀਕੇ ਨਾਲ, ਕਿਸੇ ਵੀ ਹੋਰ ਰੂਪ ਜਾਂ ਬੋਲੀ ਵਿੱਚ ਦੇ ਸਕਦੇ ਹਾਂ,
ਜਿਹੜੀ ਇਸ ਤੱਕ ਪਹੁੰਚ ਕਰਨ ਵਿੱਚ ਤੁਹਾਡੀ ਸਹਾਇਤਾ ਕਰ ਸਕਦੀ ਹੋਵੇ। ਕਿਰਪਾ ਕਰਕੇ ਸਾਡੇ ਨਾਲ ਟੈਲੀਫੋਨ
01332 716945 ਮਿਨੀਕਾਮ 01332 716709 ਤੇ ਸੰਪਰਕ ਕਰੋ।

Urdu

01332 717959 ہم آپ کو کسی دیگر ایسے طریقے، انداز اور زبان میں مہیا کر سکتے ہیں جو اس تک رسائی میں آپ کی مدد کرے۔ براہ کرم
نئی کام 01332 716709 پر ہم سے رابطہ کریں۔



For more information about Derby Children and Young People's Plan, visit www.derby.gov.uk.

For help with any information in this publication about the Derby Children and Young People's Plan, please contact:
Derby City Council, Children and Young People's Services, Middleton House , 27 St Marys Gate, Derby DE1 3NN
Telephone: 01332 716924 Fax: 01332 716920