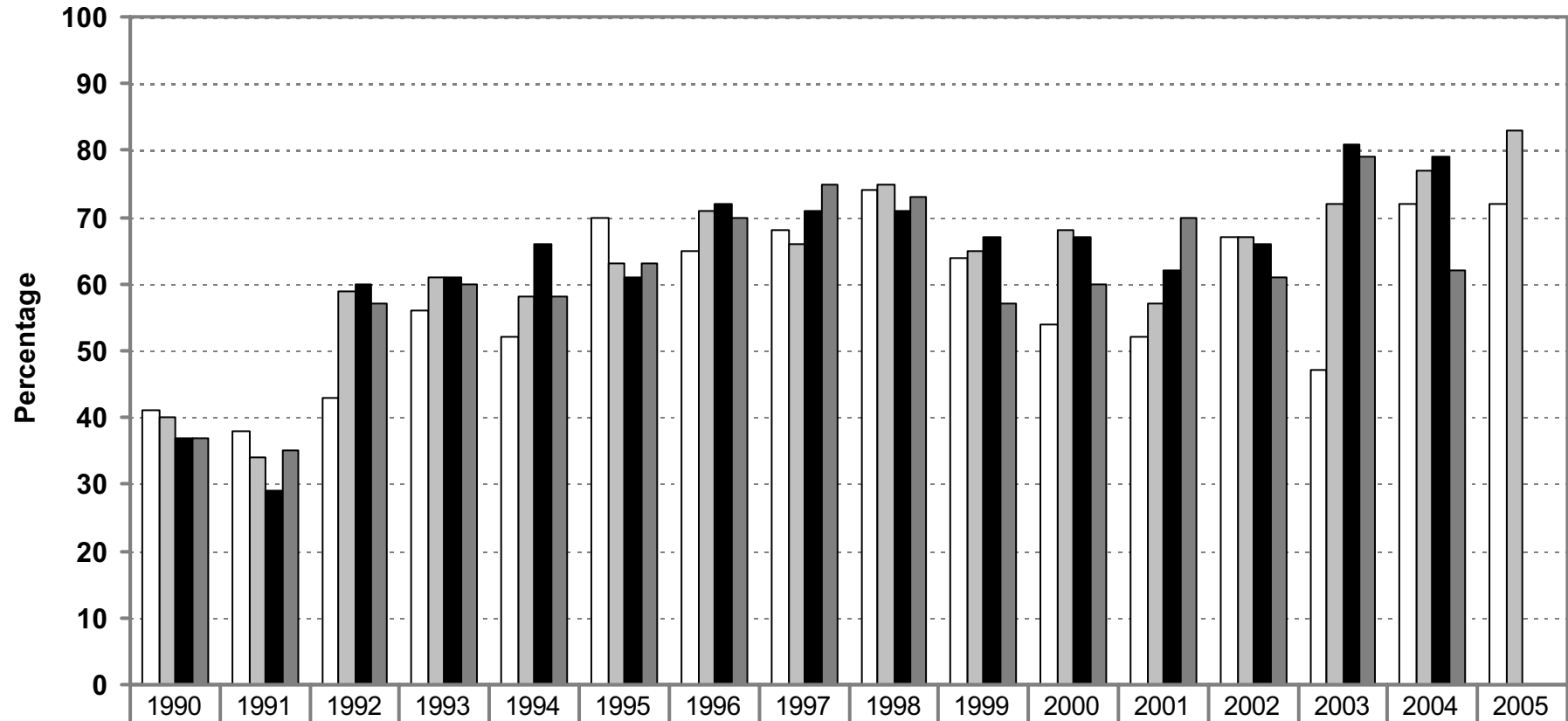


CHART 1

**Percentage of Applications Determined Within 8 Weeks
1990 - 2005.**

Appendix 2



□ 1st Quarter	41	38	43	56	52	70	65	68	74	64	54	52	67	47	72	72
▒ 2nd Quarter	40	34	59	61	58	63	71	66	75	65	68	57	67	72	77	83
■ 3rd Quarter	37	29	60	61	66	61	72	71	71	67	67	62	66	81	79	
▓ 4th Quarter	37	35	57	60	58	63	70	75	73	57	60	70	61	79	62	

Years

Chart 2a Percentage of major planning decisions within 13 weeks, by local planning authority
 April to June 2005

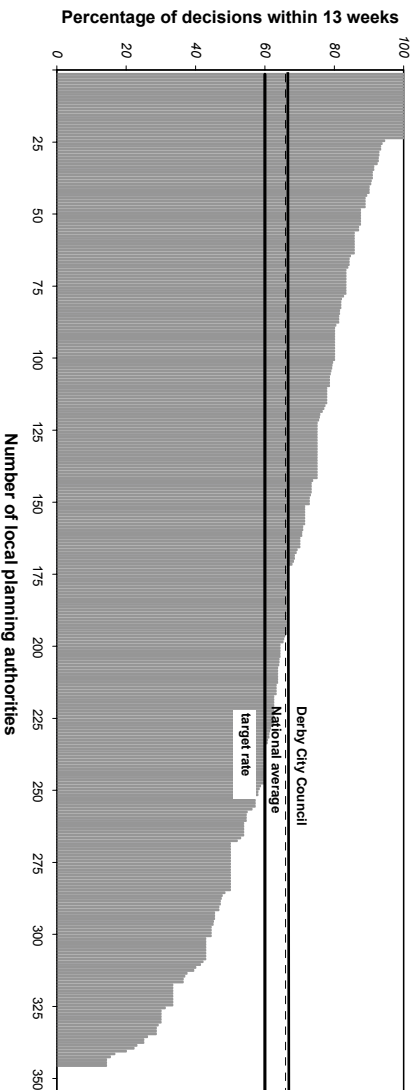


Chart 2b Percentage of minor planning decisions within 8 weeks, by local planning authority
 April to June 2005

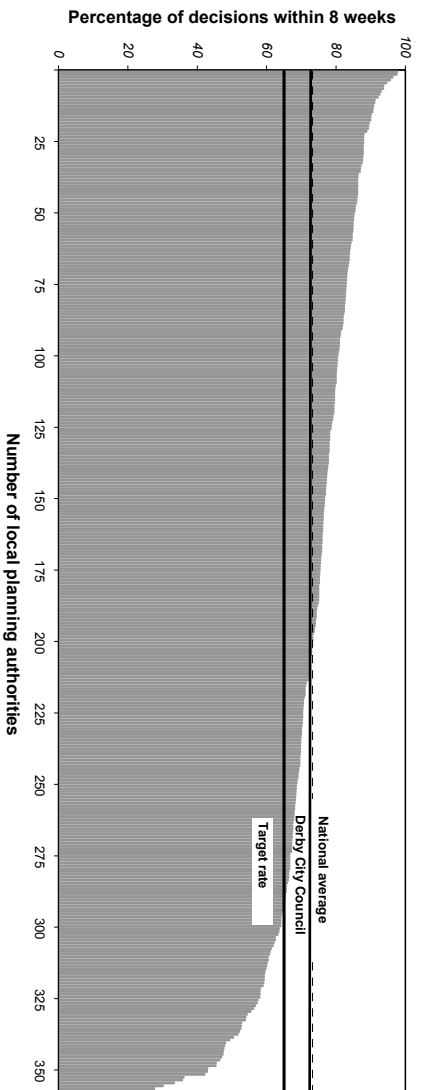


Chart 2c Percentage of other planning decisions within 8 weeks, by local planning authority
 April to June 2005

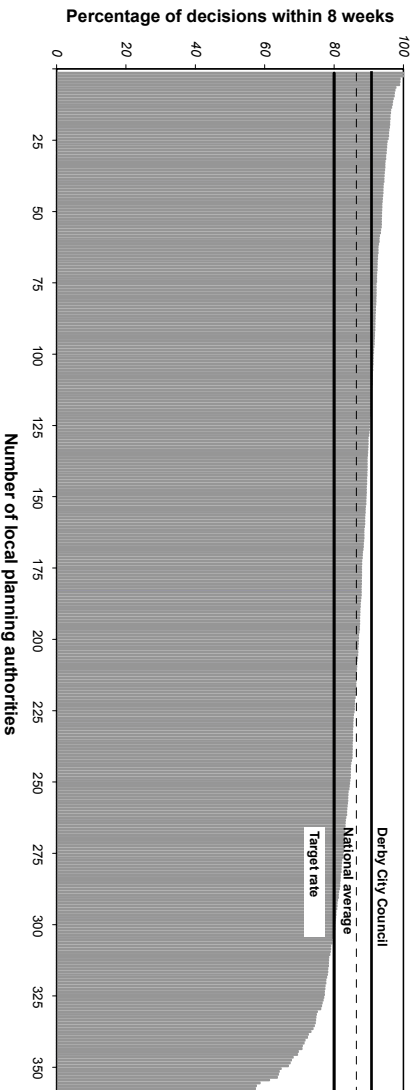
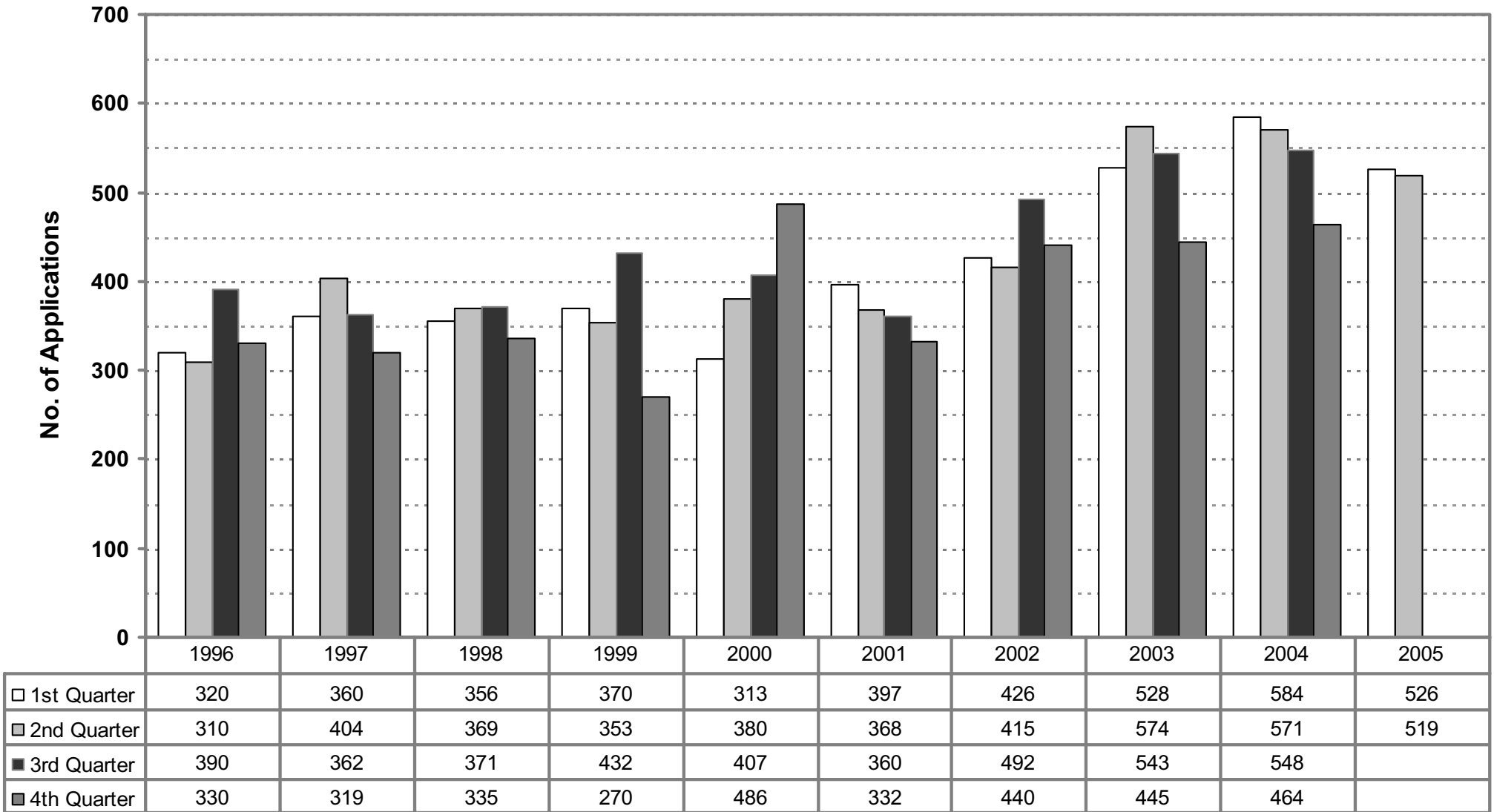


CHART 3

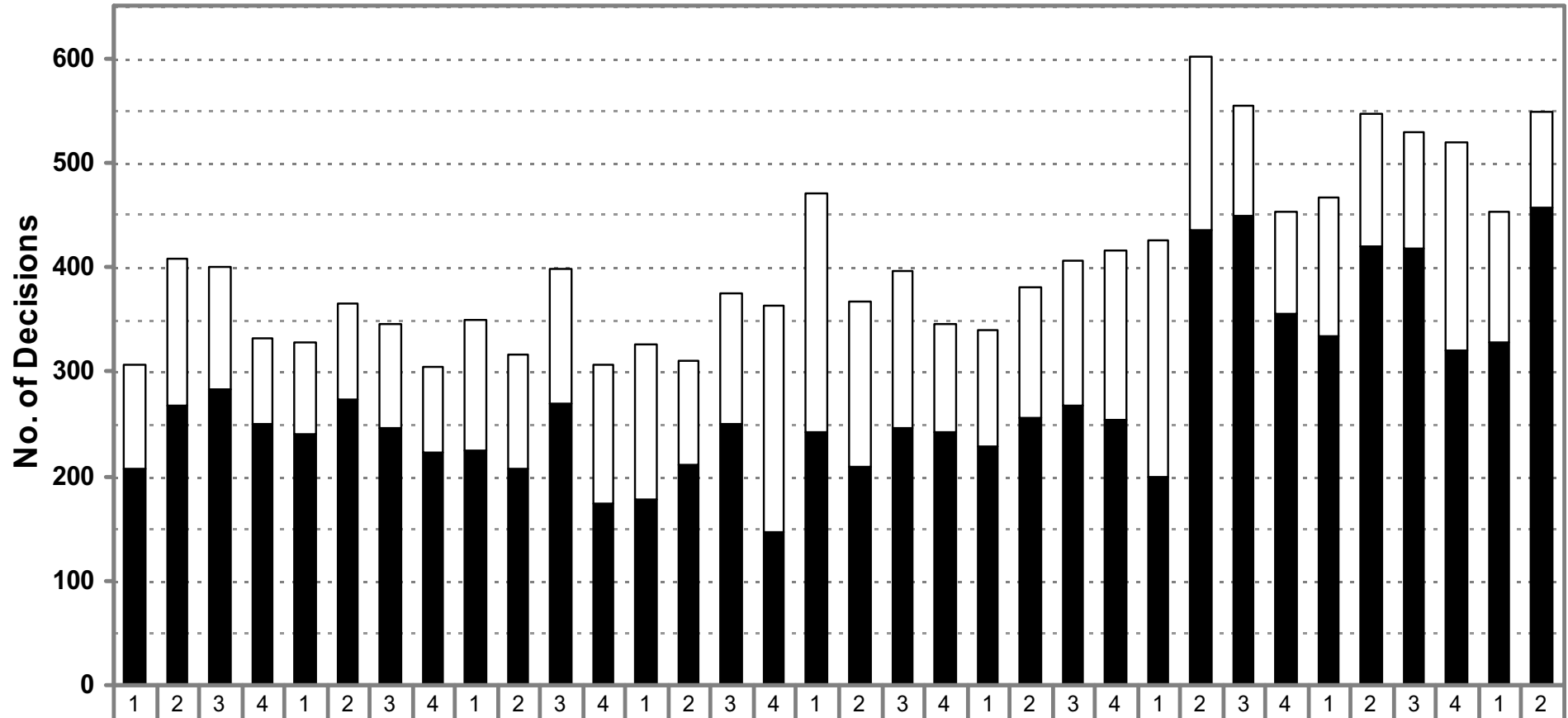
**Total number of Applications received per quarter
1996 - 2005.**



Years

CHART 4

**Number of Decisions < & > 8 weeks
1997 - 2005.**



Total decisions	306	408	400	332	327	365	345	304	350	316	399	306	326	310	374	363	470	366	396	346	340	381	406	415	426	602	555	452	466	546	529	519	453	549
□ > 8 w eeks	99	140	117	83	86	92	99	81	125	110	130	132	149	100	125	217	227	158	150	104	111	126	139	161	226	167	107	96	132	127	112	199	126	92
■ < 8 w eeks	207	268	283	249	241	273	246	223	225	206	269	174	177	210	249	146	243	208	246	242	229	255	267	254	200	435	448	356	334	419	417	320	327	457

1997

1998

1999

2000

2001

2002

2003

2004

2005

Quarters