

**Proposal to Government Office: East Midlands to establish a 16-19 Sub Regional Partnership for Derbyshire and Derby**

1. Derby and Derbyshire Local Authorities wish to establish a Post 16 Sub Regional Partnership in order to manage the transition of responsibilities for LSC funding and planning to local authorities by 2010 and thereafter to commission 16-19 learning from colleges and providers in Derbyshire and Derby.
2. Membership, initially for transition planning, includes senior officers from the County and City Councils and the local LSC. Terms of reference for the group have been agreed.
3. The sub regional partnership is a natural development of existing arrangements between the City and County which includes:-
  - A joint local authority controlled Connexions Company
  - Involvement of both authorities in the Education Business Partnership, which covers the City and County.
  - Linked developments of the 14-19 curriculum, including diplomas
  - Joint 14-19 curriculum conferences
  - Involvement of the City and County in the DDEP and employment and skills boards.
  - Read On Write Away!, a partnership which was established to promote literacy and numeracy across all age ranges.


In addition the two authorities work closely in a regional context as part of the strong strategic planning links amongst first and second tier authorities within Derbyshire's boundaries.

4. Both the County and City are high performing local authorities and had good Joint Area Review inspection outcomes in late 2007 and early 2008.
5. The City of Derby is surrounded by the County Council's area and there is considerable movement of Derbyshire learners to the City and vice versa. Around 5% (337) of Derby learners attend provision in the County, with 923 travelling in the other direction from Amber Valley, Erewash and South Derbyshire. Derby College, whilst primarily located in first class centres in Derby, also maintains provision at Broomfield in Derbyshire. Derby University maintains FE provision in Buxton and is seeking to be involved in FE provision in South East Derbyshire. The current proposal is that Derby City will act as the lead commissioner for Derby College and that Derbyshire will commission from Chesterfield College, South East Derbyshire College and Derby University.
6. Whilst a Derby/Derbyshire partnership is the most obvious model for a sub regional partnership, we will also need to take into account the movement of

young people to colleges outside of the County and region. This is particularly strong in High Peak, where 43% (866) of learners learn in Tameside or Stockport and in South Derbyshire where 38% (788) from the County and 3% (202) from the City learn at Burton College. The County Council already has strong links with Staffordshire including a cross border 14-19 Diploma Consortium. In High Peak the development of new vocational provision in Glossop and Buxton will reduce some of the movement to Stockport and Tameside. There is also significant movement across the boundary with Nottinghamshire. 28.9% (378) of students from Bolsover, 32.1% (905) from Erewash and 3.9% (263) from Derby study in Nottinghamshire, with 521 from all Nottinghamshire districts travelling into Derbyshire/Derby. Up to 15% of learners in Amber Valley, Erewash and South Derbyshire learn in Derby and there is a similar movement from Derby to Derbyshire, especially to Erewash.

7. Links with other East Midlands authorities will be maintained through regional arrangements, particularly regarding learners from Derby and South Derbyshire who learn in Leicestershire and those from Derby, Erewash, Amber Valley and Bolsover who learn in Nottinghamshire.
8. Both the County and City Council's Cabinets have agreed to establish a 16-19 sub regional partnership. The activities of the partnership will be guided by and reported to the Children and Young People's Trust in each authority and to each Cabinet as appropriate.
9. Whilst the proposed focus of the 16-19 Sub regional group is firmly on the LSC transition and commissioning, links will be maintained with the existing 14-19 structures in each authority. Copies of the partnership structures for the County and City are attached.

Signed



Bruce Buckley  
DCS Derbyshire County  
Council

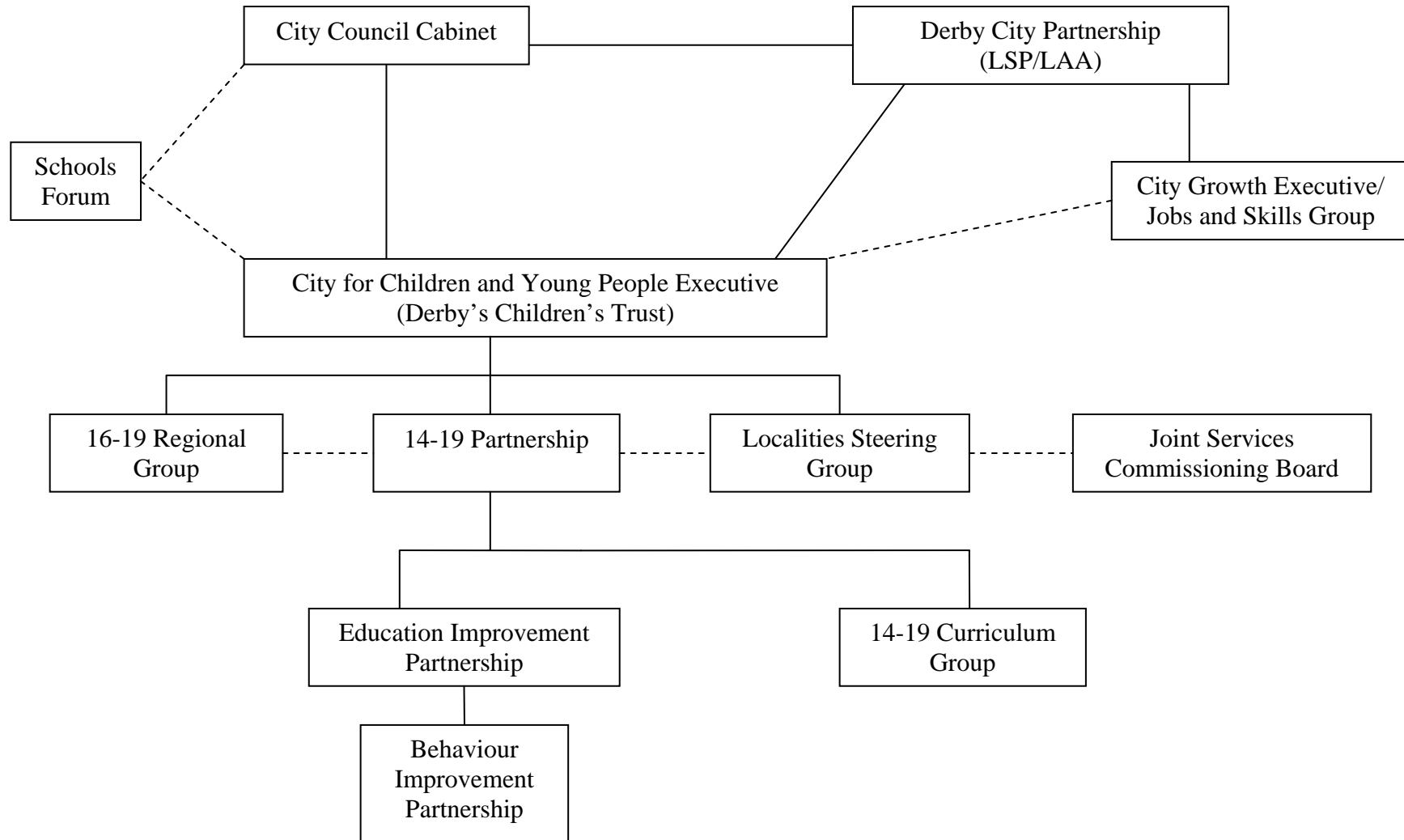


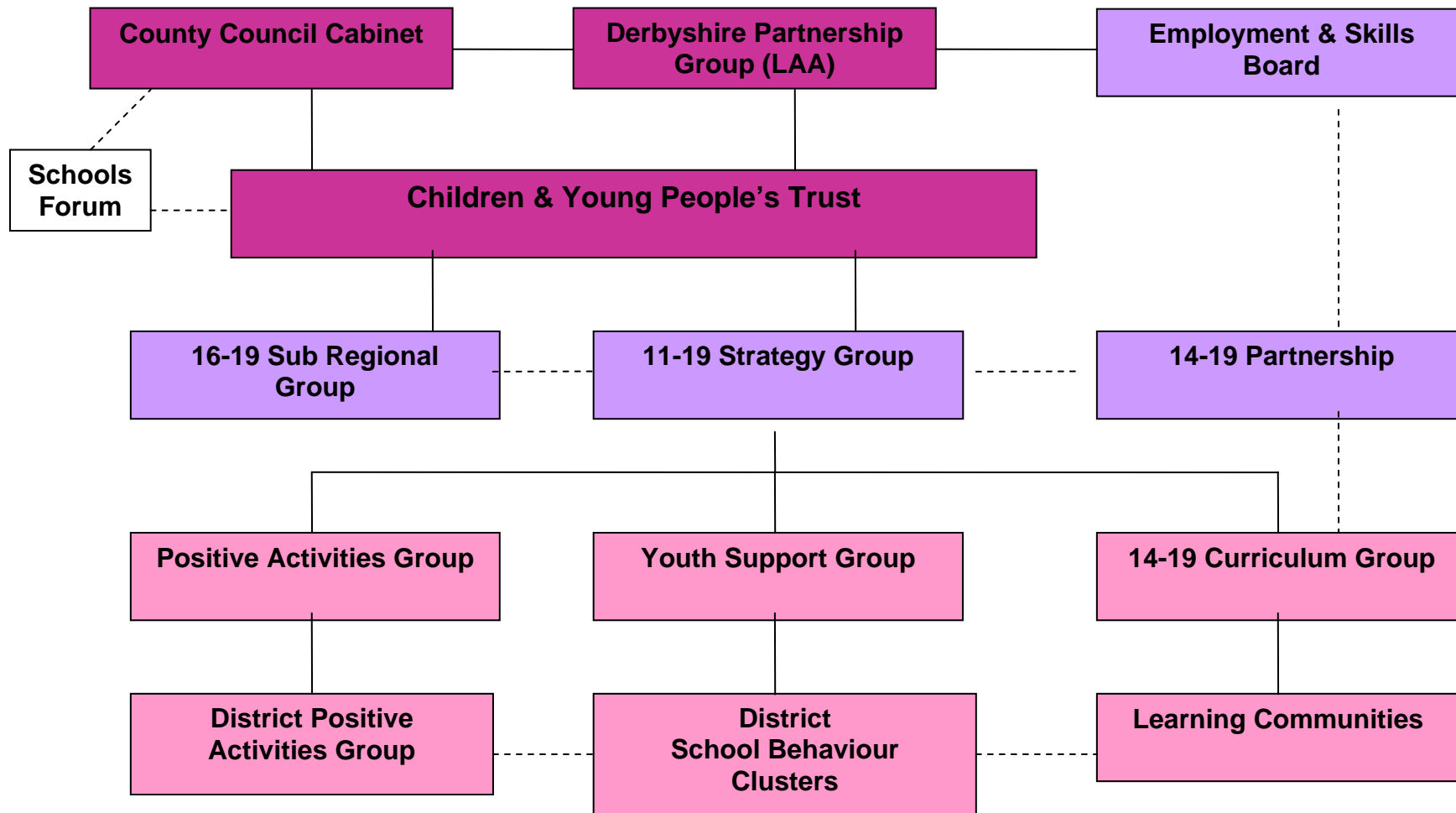
Andrew Flack  
DCS Derby City Council

September 25 2008

**\*Note – Travel to Learn figures are from the LSC Young Person Merged Dataset 2006/07 and cover 17-19 year old learners enrolled for study during that year.**

## DERBY CITY COUNCIL





**Governance  
Strategy  
Implementation**

— Direct Accountability  
 - - - Indirect Accountability