

HOUSING SCRUTINY – 19 MARCH 2019

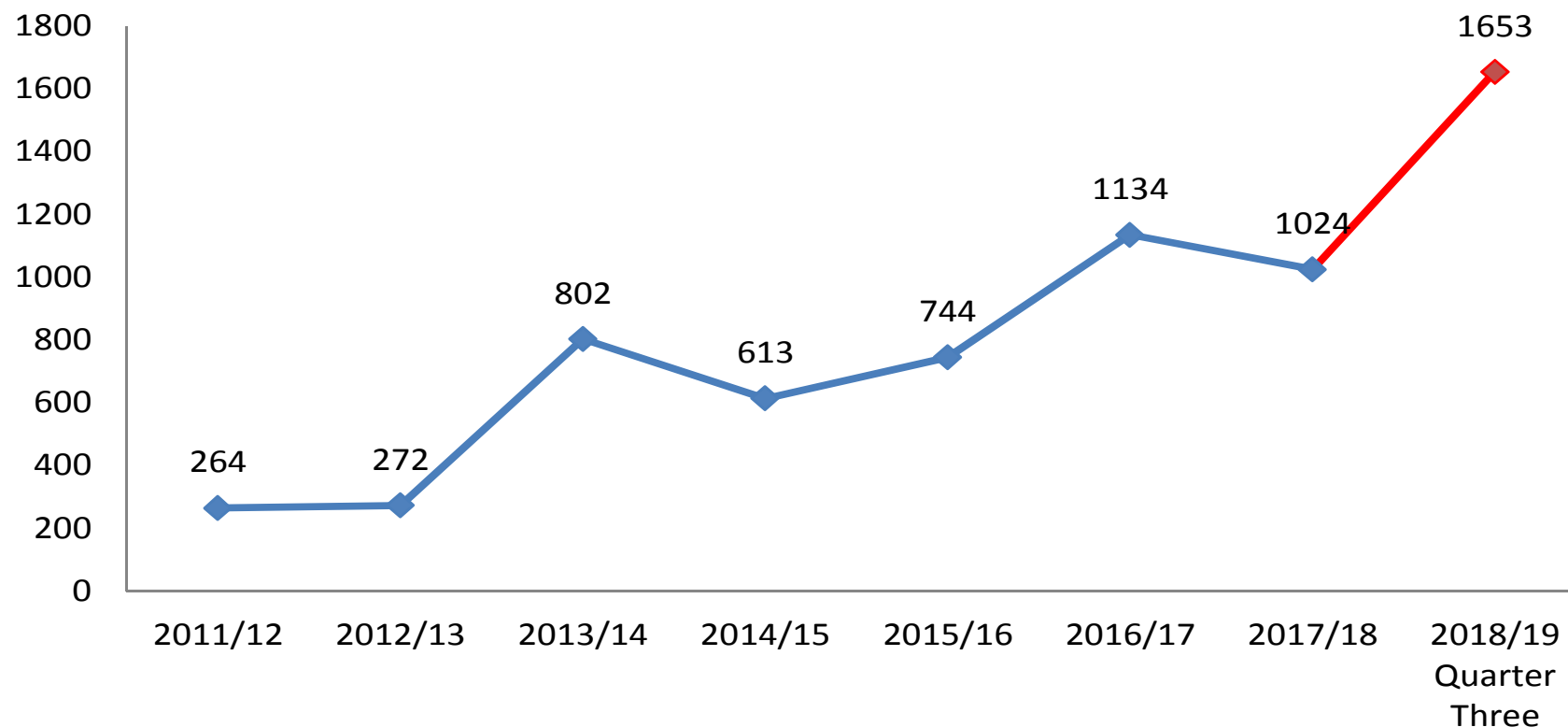
**IMPACT OF THE
HOMELESSNESS REDUCTION ACT
(HRA)2017**

Main aspects of the HRA 2017(effective 1st April 2018)

- New prevention and relief duties for all, irrespective of priority need
 - Prevention duty up to 56 days
 - Relief duty up to an additional 56 days
 - After which previous duties still apply (Housing Act 1996)
- Expectation throughout new legislation that there will be a shift in emphasis to preventing homelessness
- Expectation that full rehousing duties for Local Authorities will dramatically reduce

Rising Demand for Homeless Services since implementation of HRA

Number of homeless approaches



Profile of Approaches

Approaches: April – December 2018

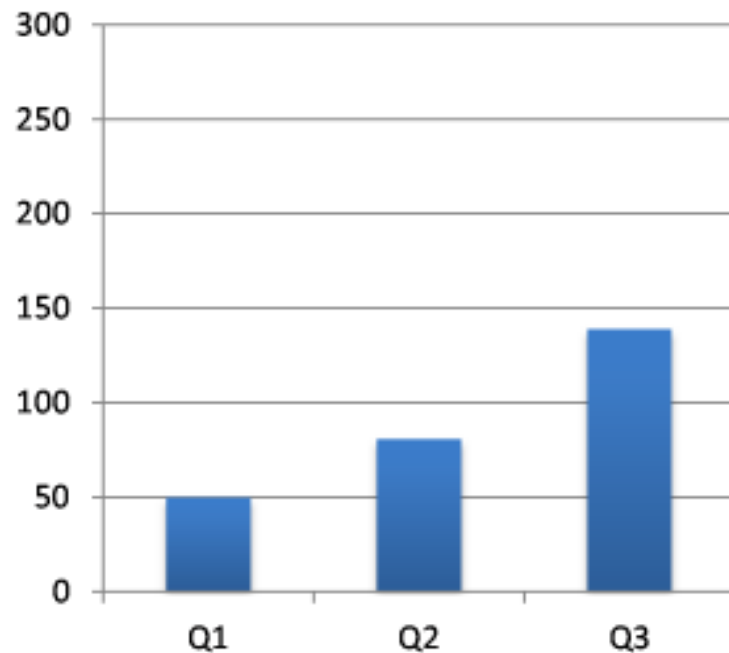
- Households with no dependent children – 966
- Households with dependents – 687

Approaches: 2017/18

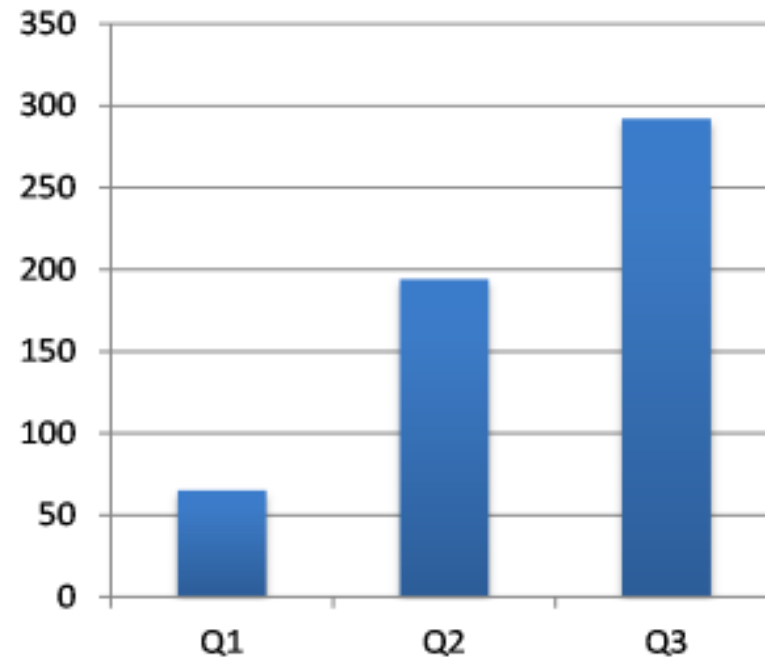
- Households with no dependent children – 456
- Households with dependants – 577

How are we doing? - Outcomes

Total number of cases resolved under 'prevention duty'

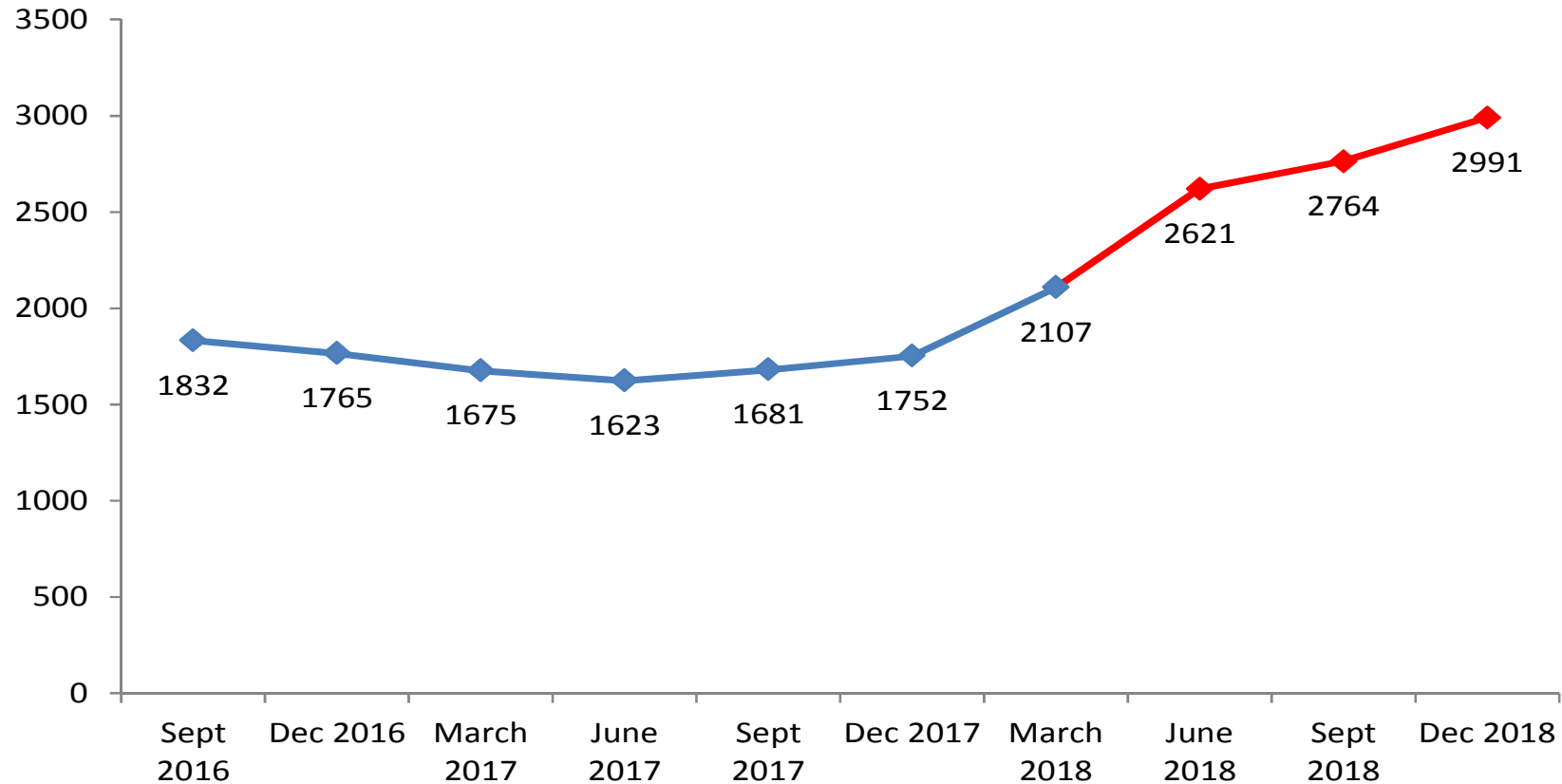


Total number of cases resolved under 'relief duty'



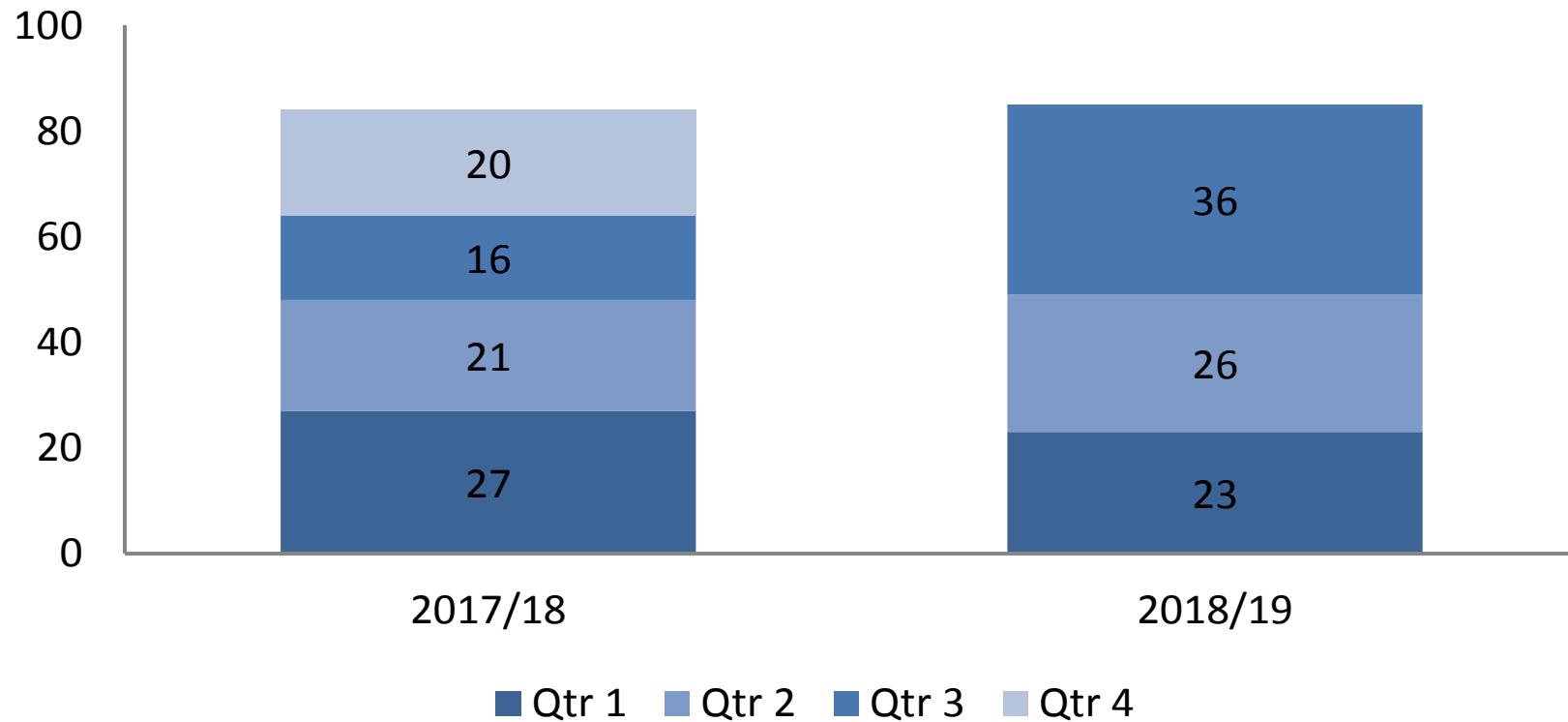
Impact on Housing Register

Number of Active Applicants on the Housing Register



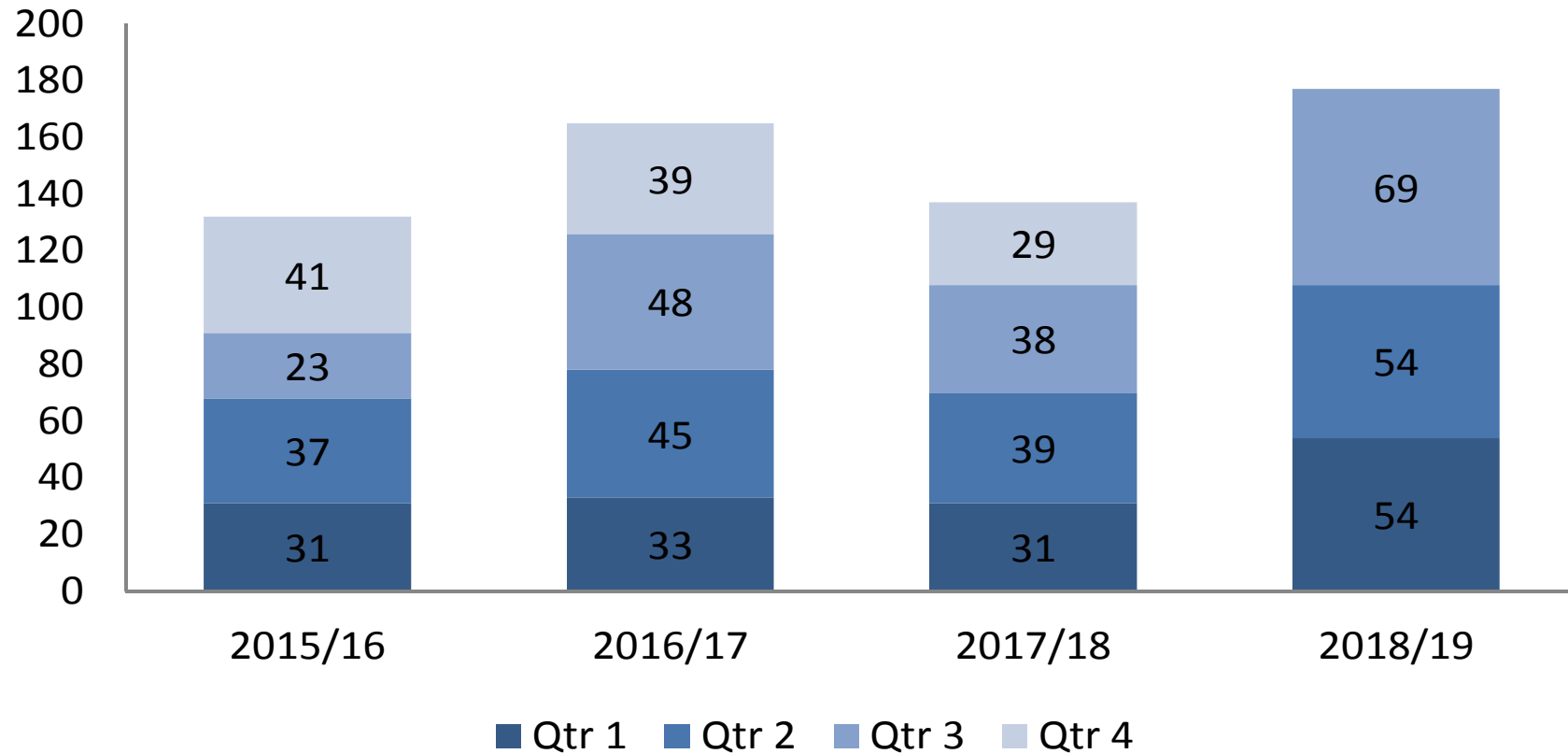
Impact on Temporary Accommodation

Number of new households placed in temporary accommodation other than bed & breakfast in a month



Impact on TA – Bed & Breakfast

Number of new households placed in b&b in a month



Private Rented Sector Team

- Number of incentives available to applicants and Landlords
- Funded through Flexible Homeless Prevention Grant (MHCLG)
- Applicant must have identified housing need and incentive must prevent/resolve homelessness

PRS Scheme Outcomes

- Number of new PRS lettings, April – December 2018 – 98
 - Households with no dependent children – 34
 - Households with dependents – 64
- Average cost per property of incentives - £888

Housing Pathways

- Requirement of the HRA for vulnerable groups. Funded through Flexible Homeless Prevention Grant (MHCLG)
- 3 Housing Pathways established so far in Derby:
 - Young People – YMCA
 - Complex Needs – Homes for Me Derventio
 - Prison Release – Star Project CRC/YMCA (started Dec 2018)

YMCA – Y –Steps

- Number of people accommodated by Y-Steps project – 61
- Number of people dropped out of programme - 10
- Number of positive moves into permanent settled accommodation - 7
- Number of people accessing Employment, Education, Training or volunteering - 19

Homes4me

- Accepted onto the Project – 23
- Number of people dropped out of project - 2
- Number of people currently on the project – 21
- Number of positive moves into permanent settled accommodation – 5 (these continue to be supported by Homes4me)
- Number of people accessing Employment, Education or Training - 19

Single Homelessness / Rough Sleepers

- Now forms part of statutory provision for prevention and relief
- Derby is running three initiatives locally
 - REST Team (funded by MHCLG)
 - Bed and Breakfast placements (funded by MHCLG)
 - Safe Space (funded by Derby Homes/OPCC/Public Health/MHCLG) – Due to Open March 2019
- Government ambition to eradicate rough sleeping by 2027

REST Team

- Outreach and in-reach team
- Bespoke options for those sleeping rough / at risk of sleeping rough
- Access to Hostels / Night shelter / Bed and Breakfast / Housing Pathways
- Assertive and Persistent
- Links with PEEP engagement and enforcement programme
- Dreams and aspirations

Reduction in Rough Sleeping

20/11/17	Official Rough Sleeping Estimate (annual measure)	37
01/08/18	MHCLG monthly return (estimate)	48
31/08/18	MHCLG monthly return (estimate)	43
28/09/18	Actual Street Count	36
30/09/18	MHCLG monthly return (estimate)	38
31/10/18	MHCLG monthly return (estimate)	24
16/11/18	Official Rough Sleeping Estimate (annual measure)	26
30/11/18	MHCLG monthly return (estimate)	17
17/12/18	Actual Street Count	9

Bed & Breakfast Placements

- Funded by MHCLG
- Alternate to Hostels as way of engaging hard to reach rough sleepers
- 35 individuals accommodated for a total of 291 nights
 - This has been an essential first step for many people who have been living entrenched and chaotic lifestyles for many years

Safe Space – Opening March 2019

- Rapid Assessment/Basic shelter for rough sleepers or those at risk of rough sleeping.
- Charnwood Street, Derby – Central Location
- Open 24/7
- Navigators
- Health services on-site
- Intensive holistic intervention into housing and focus on sustainment of future housing
- Anticipate up to 20 service users at any one time

Rough Sleeping

Local authorities with the five largest increases and five largest decreases in the number of people sleeping rough between autumn 2017 and autumn 2018

	2018 Total	2017 Total	Difference	% change
England	4677	4751	-74	-2%
East Midlands	358	313	45	14%
Derby*	26	37	-11	-30%
Local Authority				
Westminster*	306	217	89	41%
Enfield	78	9	69	767%
Birmingham*	91	57	34	60%
City of London*	67	36	31	86%
Manchester*	123	94	29	31%
Brighton & Hove*	64	178	-114	-64%
Southend on Sea*	11	72	-61	-85%
Luton*	47	87	-40	-46%
Redbridge*	26	65	-39	-60%
Eastbourne*	6	41	-35	-85%

Source: Ministry for Housing, Communities and Local Government

Future Risks

- No long term funding plan– *Transitional Grant 2 years only, MHCLG grant funding allocation yearly and through bid submission (lengthy process and resource intensive)*
- No signal of reduction in demand any time soon
- Private Sector Team expansion needed but no additional resources available

Future Risks Continued

- Continued shortage of housing accessible to those in need, both in public and private sector
- Continued barriers to accessing housing for those in need. Greater resources needed to provide more supported housing/ floating support
- Unmet need due to higher demand for prison release high risk cases