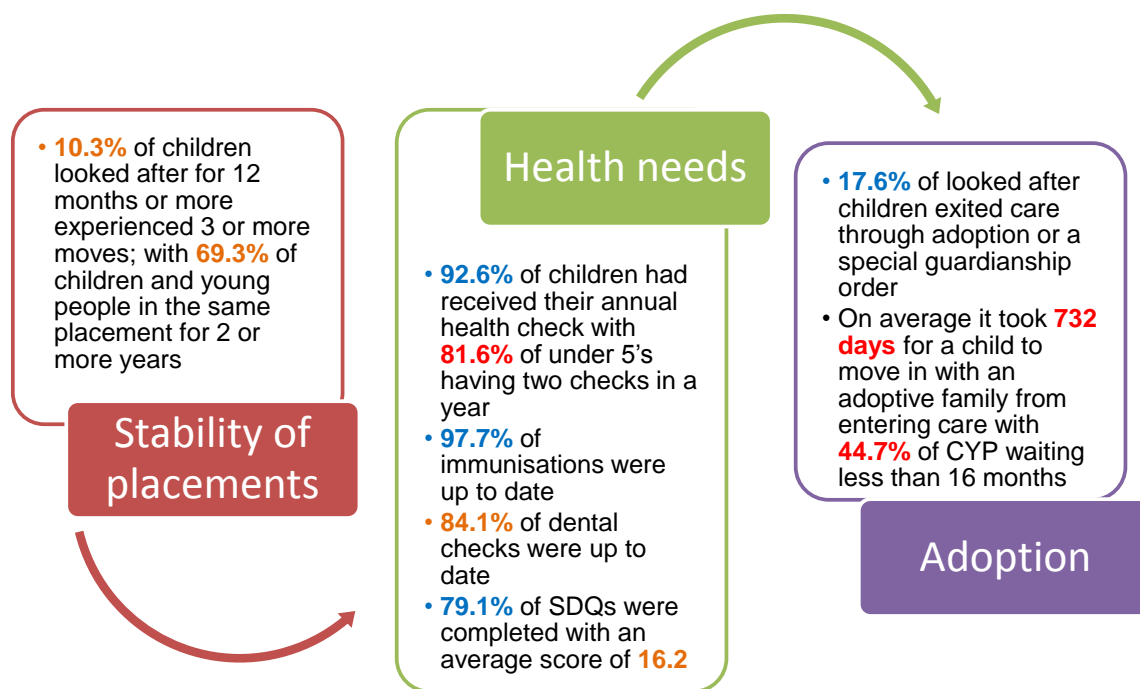


Current profile of Derby's looked after population and outcomes

SUMMARY

- 1.1 At the end of March 2017, there was a total of 448 looked after children and young people in Derby City. This represents a 0.4% decline from the position reported at the end of March 2016, when there was 450, and equates to a rate of 76.1 per 10,000 children (< 18 years of age).
- 1.2 At the end of March 2017, the largest percentage of Derby's looked after children were:
 - male (57.4%); although this is a decline on the position of 60% reported at the end of March 2016
 - aged 10-15 years (37.5%)
 - White British (65.4%) however this position has fallen compared to the 78% reported at the end of March 2016
 - placed in a foster care placement (72.9%), which has risen from 68% at the end of March 2016
 - placed outside of Derby City (61.4%).
- 1.3 Presented below is a summary of key outcomes for Derby's looked after children at the end of March 2017, with performance traffic lighted against the year-end targets...



- 1.4 Hazel Lymbery – Service Director for Early Help and Children's Safeguarding and Suanne Lim – Service Director for Children's Integrated Services will attend the meeting to present an update on both the profile of Derby's looked after population and also current outcomes.

RECOMMENDATIONS

- 2.1 To note the report.
- 2.2 To note the presentation at the meeting.

REASON FOR RECOMMENDATIONS

- 3.1 It is essential that Children and Young People Overview and Scrutiny Board are aware of performance information relating to looked after children and the outcomes achieved for them, providing them with the opportunity to challenge services as appropriate.

SUPPORTING INFORMATION

- 4.1 Children and Young People Overview and Scrutiny Board received an update on outcomes for Derby's looked after children in April 2017.

OTHER OPTIONS CONSIDERED

5.1 None.

This report has been approved by the following officers:

Legal officer Financial officer Human Resources officer Estates/Property officer Service Director(s) Other(s)	Andy Smith – Strategic Director People Hazel Lymbery – Service Director Early Help and Children's Safeguarding Suanne Lim – Service Director Integrated Services Heather Greenan – Head of Performance and Intelligence Alison Birch – Business Intelligence Team Leader – Social Care
For more information contact: Background papers: List of appendices:	Sarah Walker Policy and Improvement Manager 01332 643466 sarah.walker1@derby.gov.uk None Appendix 1 – Implications

IMPLICATIONS

Financial and Value for Money

- 1.1 Financial implications relating to looked after children are monitored and managed by Service Directors within People Services and will be reported to the Board separately.

Legal

- 2.1 None arising from this report.

Personnel

- 3.1 None arising from this report.

IT

- 4.1 None arising from this report.

Equalities Impact

- 5.1 None arising from this report.

Health and Safety

- 6.1 None arising from this report.

Environmental Sustainability

- 7.1 None arising from this report.

Property and Asset Management

- 8.1 None arising from this report.

Risk Management and Safeguarding

- 9.1 None arising from this report.

Corporate objectives and priorities for change

- 10.1 The content of this report supports the City's ambition of 'safe'.