

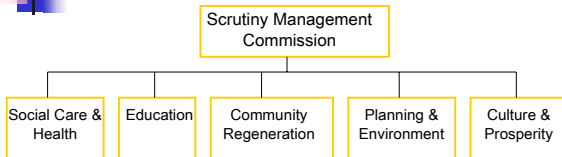
## What is Overview and Scrutiny?

A review or scrutiny in public of decisions or actions of the council or external organisations that affect the area or its inhabitants

## Review of Hospital Car Park Charges

Social Care and Health Commission

## Overview and Scrutiny in Derby



**6 Commissions**

**36 Commission Members with 8-12 Members per Commission**

**Minority (Labour) Group Chairs**

**4 Co-ordination Officers**

## The Derby Hospitals NHS Foundation Trust

- Incorporates the Derbyshire Royal Infirmary, Derby City General Hospital, Derbyshire Children's Hospital, Derby Chest Clinic and the Grove Hospital
- Has 1,235 beds across 44 wards
- Serves a population of over half a million people
- Employs over 6,000 staff, from doctors and nurses to housekeepers and porters
- Has an annual budget of around £200 million
- Sees and treats over 600,000 people as inpatients, outpatients, emergency patients and day cases this year

## Social Care and Health Commission Portfolio

- Children and Family Services
- Adult Services
- Assessment and Care Planning
- Social Services Support Services
- Health Improvement Planning/ Health of the Nation
- Health Services Scrutiny

## Current Car Park Charges

Up to:

1	hour	£1.30
2	hours	£1.90
3	hours	£2.40
4	hours	£3.00
5	hours	£3.60
6	hours	£4.80
More than 6	hours	£6.60



## Terms of Reference

To review the impact of hospitals car parking charges on patients and visitors to the Southern Derbyshire Acute Hospitals NHS Trust's Derbyshire Royal Infirmary and Derby City General Hospitals. The review will specifically consider:

- The purpose and merit of introducing hospital car park charges
- The current level of parking charges on patients and visitors to the hospital
- Total revenues generated through the car charges and what the revenue is used for



## What Next

- Seek evidence from variety sources
- Commission will discuss findings with the hospital
- Prepare and publishes final report



## Evidence

- Derby City Council Transport Manager
- Derby Seniors Forum
- Advisory Committees
- Volunteers working at the hospital
- Public and Patient Involvement Forum
- Local Bus Company
- Survey of patients and visitors to the hospital



## What are your views on

- The principle of car park charging for
  - patients
  - visitors
- Affect of charges on patients and visitors to the hospital, if any?
- Level of charges - are they too high, about right, too low?
- Location of car park and number of spaces
- Any changes you would like to see to the car parking