

Learning Disabilities & Autism update to Derby City Council Health Overview & Scrutiny Commission

21st March 2022

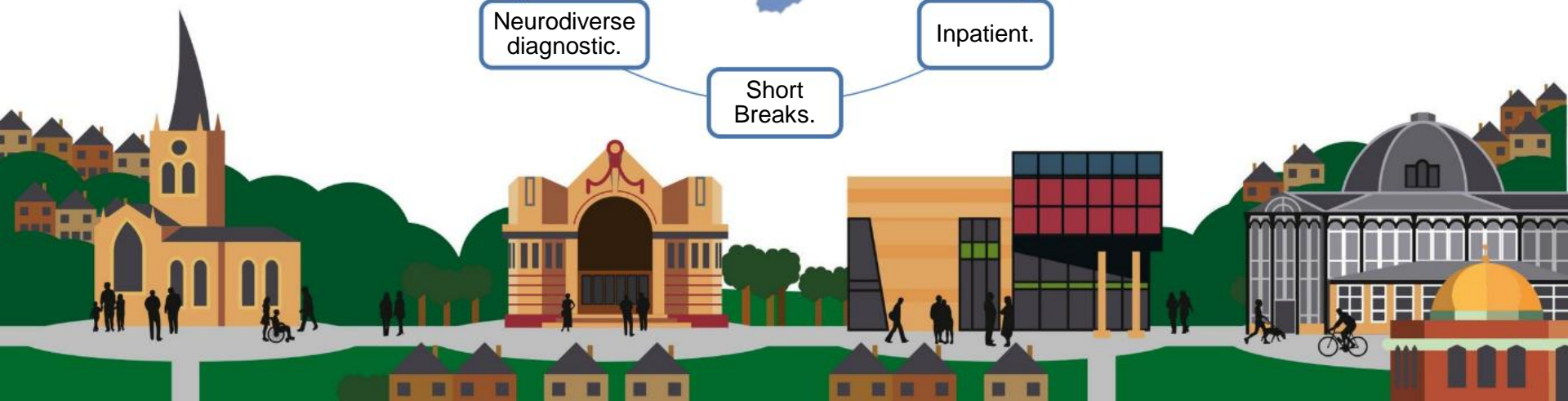
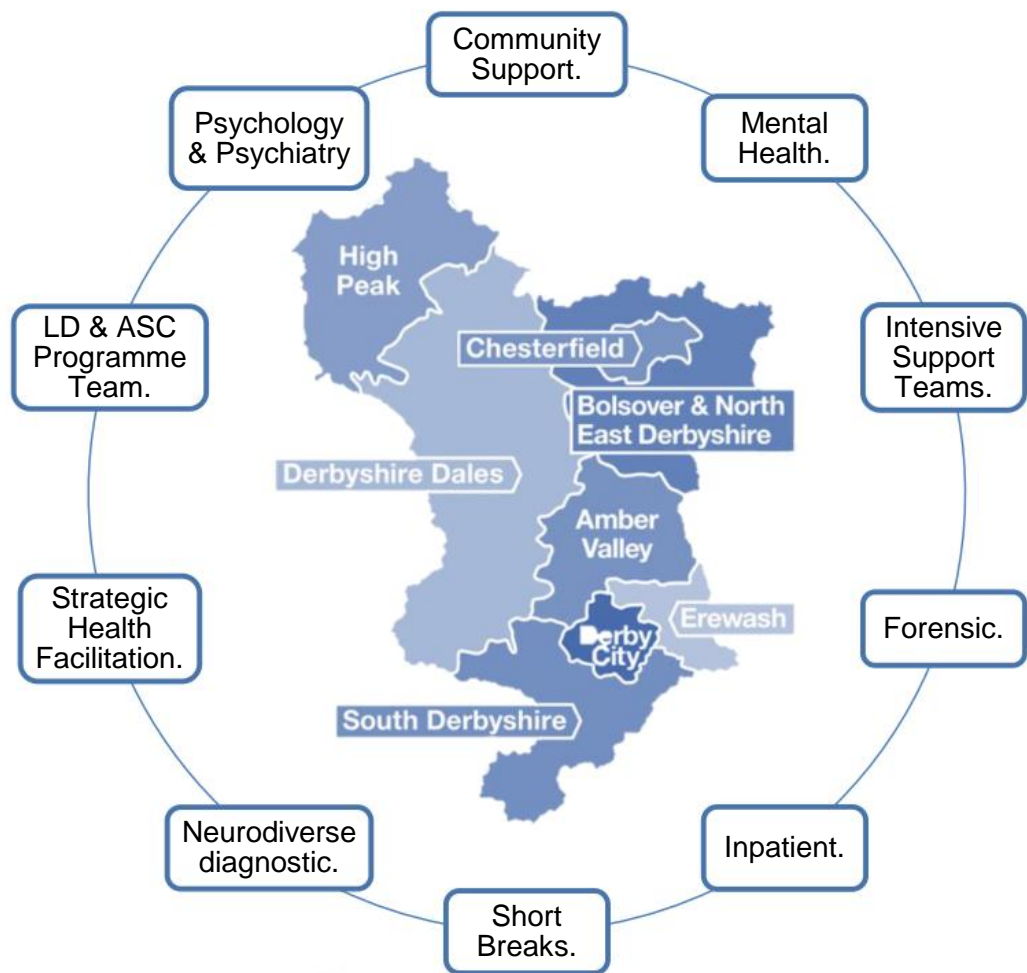
James Lewis – Head of Joint Strategic Commissioning Learning Disabilities
& Autism (Derby & Derbyshire Clinical Commissioning Group)



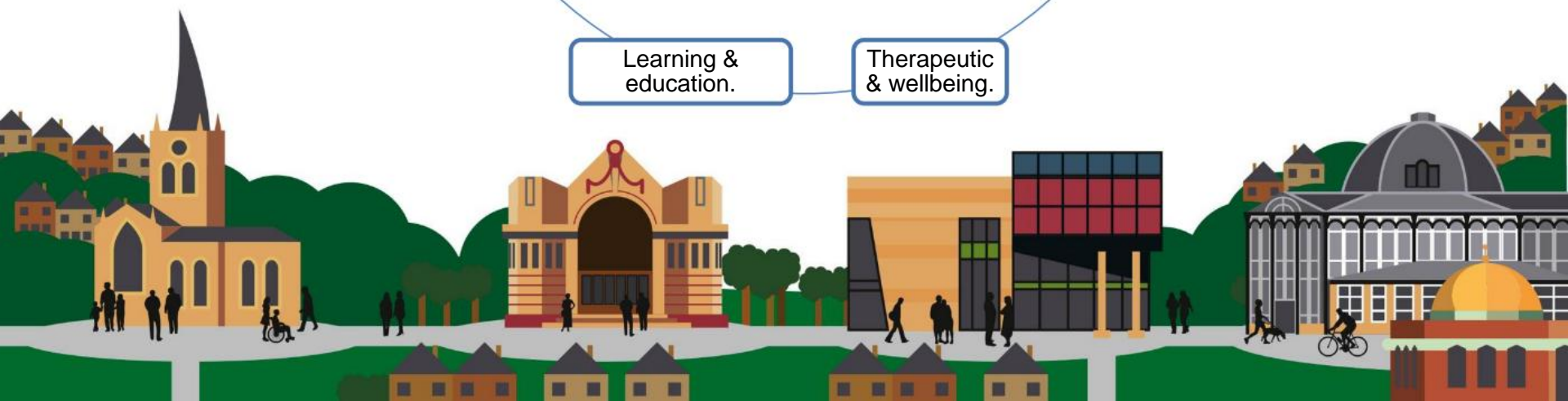
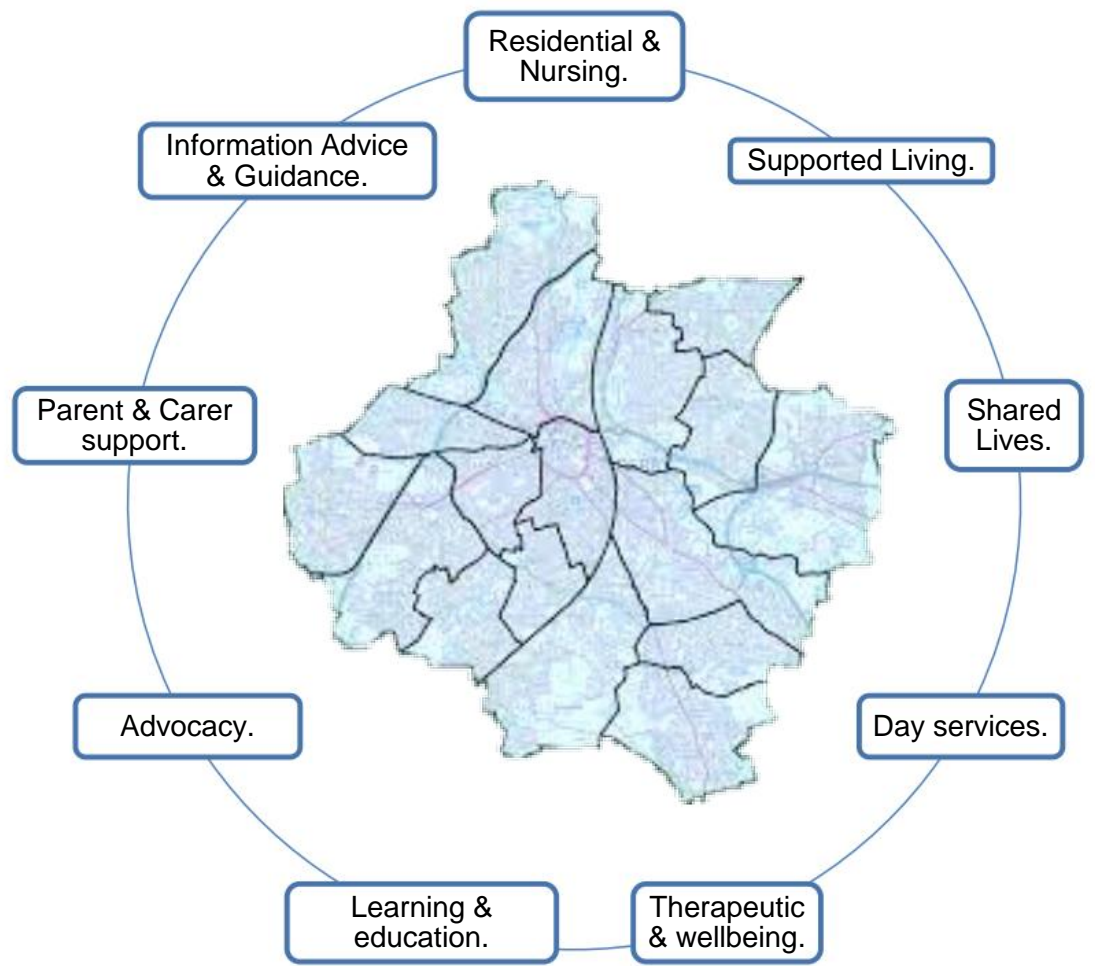
Learning Disabilities & Autism in Derby

- Approximately **4,700 adults with a learning disability, 1,500 children.**
- Approximately **1,950 autistic adults, 600 children.**
- 891 'working age adults' with a learning disability in receipt of long-term support from Derby City Council (19% of total estimated population).
- 80% of autistic people experience mental health issues during their lifetime.
- Average age of death for men with LD in Derby & Derbyshire is 60, 62 for women.
- Autism is the most common primary need for children and young people with an EHCP (37%)
- 22% of autistic adults are in any form of paid employment, 2.8% of adults with a learning disability in receipt of long-term support.





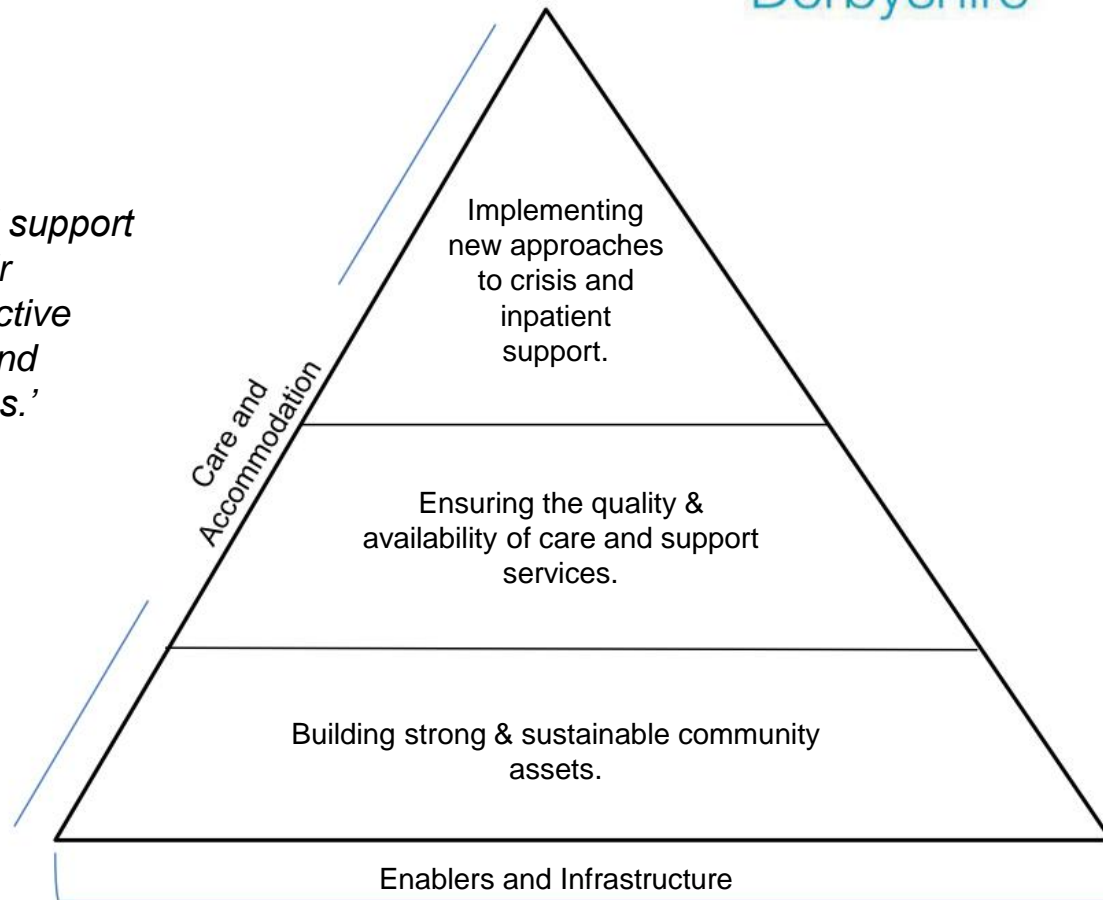
LD & ASC Social & Community Services



JUCD LD & ASC Road Map (2021-5)

Joined Up Care
Derbyshire

‘Our ambition is to reconfigure how care and support is delivered for people with LD/ASD and their families. JUCD aims to move away from reactive and intensive interventions to preventative and flexible support provided in local communities.’



What we want to be different.

- Fewer people with LD &/or ASC who are inpatients.
- More people with LD to have their Annual Health Check.
- No one to have an inappropriate DNA-CPR order in place when they pass away.
- Fewer people with LD to pass away with a recorded cause of death of 'epilepsy' or 'constipation'.
- Increase in the % of people with LD &/or ASC who are in paid employment.
- Decrease in the number of autistic people who complete or incomplete suicide.
- Communities & service are more neurodiverse friendly.



Our achievements to date.

- Created a Specialist Autism Team in the NHS.
- Participated in the Oliver McGowan Mandatory Training Pilot.
- Had initial concepts approved for a new 'Child & Young Person Key Worker' role.
- Commissioned a new VCSE 'lead organisation'.
- Begun the 'harmonisation' of the two Community NHS Trusts.
- Improved the neurodiverse diagnostic pathway for children, young people and parents.
- Increased the number of people who have received their 'Annual Health Check'.
- Overseen an increased number of discharges.
- Mobilised an integrated team to oversee operational improvements.



Our future priorities.

- Further improvements to the neurodiverse diagnostic pathway.
- Development of new care and support accommodation.
- Improving accessibility and quality of mental health services.
- Align operational pathways across health and social care.
- Creating 'neurodiverse' friendly communities.
- Investing in and enabling the Voluntary, Community & Social Enterprise sector.
- Strengthening our community based offer.
- Ensuring people's voices are heard.



How we are working together.

- Integrated Care System governance established through System Delivery Board.
- LD & ASC Programme 'accountability' has transferred from the Clinical Commissioning Group to Derbyshire Healthcare Foundation Trust.
- Integrating LD & ASC resources and assets from across the Integrated Care System.
- Working closely with colleagues from children and young people and mental health services.
- Engaging with autistic people and those with a learning disability & their families.



Some local social & community services

Joined Up Care
Derbyshire

First Steps - <https://firststepsed.co.uk/>

The Hardy Group - <https://hardygroupdementia.org.uk/>

Autism Information & Advice - <https://www.citizensadvicemidmercia.org.uk/autism-information-and-advice/>

Derby City Life Links - <https://derbycitylifelinks.org.uk/>

Making Space - <https://makingspace.co.uk/derby-city-dementia-support>

Manor Care Farm - <https://www.manorcarefarm.co.uk/>

Enabled Centre - <https://www.enabledcentre.co.uk/>

Inspirative Arts - <https://www.inspirativearts.co.uk/>

St James Centre - <http://www.stjamescentrederby.co.uk/>

Disability Direct - <https://www.disabilitydirect.com/>

Headway Derby - <https://www.headway.org.uk/supporting-you/in-your-area/groups-and-branches/east-midlands/headway-derby/>

Derby Adult Learning Service - <https://www.adult-learning-derby.org.uk/>

Umbrella - <https://umbrella.uk.net/>

Derby County Community Trust - <https://www.derbycountycommunitytrust.com/>

One Advocacy - <https://www.citizensadvicemidmercia.org.uk/advocacy/>

Leonard Cheshire - <https://www.leonardcheshire.org/get-support/communities-family/day-centres/derbyshire-community-support-group>

YMCA - <https://ymcaderbyshire.org.uk/>

Autism East Midlands - <https://www.autismeastmidlands.org.uk/>

Hubbub Theatre - <https://hubbubtheatre.org/>

The Light House - <https://www.derby.gov.uk/health-and-social-care/disabilities/disabled-children-and-young-people-the-lighthouse/>

Mencap - <https://www.mencap.org.uk/>

Feel Alive Hub - <https://www.schoolandcollegelistings.com/GB/Derby/401409580251497/Feel-Alive-Hub-CIC-%26-Drama-Group>

Community Action Derby - <https://www.communityactionderby.org.uk/>

Parent Carers Together - https://localoffer.derbyshire.gov.uk/#!/model/page/facebook_page/477

Autism Derby - <https://www.autismderby.co.uk/>

Derby SEND Local Offer - <https://www.derby.gov.uk/education-and-learning/derbys-send-local-offer/>

Community Directory Derbyshire - <https://www.communitydirectoryderbyshire.org.uk/>

