

Consultation Document

**Please give us your views and
comments on our proposal
to consider the future viability of
Ashgate Nursery School**

Consultation Period:

Monday 9 January to Monday 27 February 2023

To: Parents of pupils at Ashgate Nursery Schools, other local schools, Staff, Governors, Trade Unions and Derby City Councillors (Ward Members)

1.0 Introduction

- 1.1 Derby City Council is consulting on a proposal to consider the future viability of Ashgate Nursery School primarily due to falling pupil numbers. As background information, Ashgate Nursery School is federated with Central Nursery School.
- 1.2 To minimise any potential disruption to children, parents and families, the proposal is to keep Central Nursery School open as it can accommodate the children attending Ashgate Nursery School. The nurseries currently operate across two sites.
- 1.3 This consultation document tells you about the reasons for the proposal and how the decision-making process works. Please take time to read through the document and let us know your views and comments using the online Consultation Response Form. The closing date for responses is **Monday 27 February 2023**. We hope you find the document helpful and informative.

2.0 Reasons for the Proposal

- 2.1 Ashgate Nursery School is located just off Ashbourne Road and most of the children who attend Ashgate Nursery School live nearby. Both nurseries have a 'Good' Ofsted judgement and share the same School Governing Body and Headteacher.
- 2.2 Ashgate Nursery School has 40 full time three and four-year-old nursery places which means that there are 80 part time places. The nursery also has 12 full time two-year-old places and families can also purchase additional childcare.
- 2.3 Ashgate Nursery School has unfortunately experienced falling numbers over several years. The table below shows summer term occupancy levels when numbers are at their highest. It includes children accessing both their universal and extended early years provision. It is important to note that these numbers are also, reflective of before, during and after the COVID-19 pandemic.

Year	Total number of funded 2-year-old hours (% occupancy)	Deficit in occupancy (max hours available 4,320) (% deficit)	Total number of funded 3- and 4-year-old hours (% occupancy)	Deficit in occupancy (max hours available 14,400) (% deficit)
2019	3,492hrs (80.8%)	-828hrs (19.1%)	13,368hrs (92.8%)	-1,032 (7.1%)
2020	3,240hrs (75%)	-1,080hrs (25%)	10,848hrs (75.3%)	-3,552 (24.6%)
2021	2,925hrs (76.7%)	-1,395hrs (32.3%)	12,060hrs (83.7%)	-2,340 (16.3%)
2022	2,160hrs (50%)	-2,160hrs (50%)	11,957hrs (83%)	-2,442 (16.9%)

Term	Number of 2-year-olds	% against 24 places (12 FTE)	Number of 3- and 4-year-olds Universal	Number of 3-and 4-year-olds Extended	Total number of 3- and 4-year old 15 hour places filled	% against 80 places (40 FTE)
Summer 2019	19	79%	58	19	77	96%
Summer 2020	19	79%	54	8	62	77%
Summer 2021	20	83%	59	9	68	85%
Summer 2022	12	50%	56	11	67	84%

2.4 The tables below show summer term occupancy levels for Central Nursery School:

Year	Total number of funded 2-year-old hours (% occupancy)	Deficit in occupancy (max hours available 4,320) (% deficit)	Total number of funded 3- and 4-year-old hours (% occupancy)	Deficit in occupancy (max hours available 18,360) (% deficit)
2019	3,096hrs (71.6%)	-1224hrs (28.4%)	21,625hrs (117.8%)	3265hrs +(17.78%)
2020	2,232hrs (51.7%)	-2,088hrs(48.3%)	22,204hrs (120.9%)	3844hrs +(20.9%)
2021	3,399hrs (78.7%)	-921hrs (21.3%)	16,231hrs (88.4%)	-2,129hrs (11.6%)
2022	3,024hrs (70%)	-1,296hrs (30%)	16,117hr (87.8%)	-2,243hrs (12.2%)

Term	Number of 2-year-olds	% against 24 places (12 FTE)	Number of 3- and 4-year-olds Universal	Number of 3-and 4-year-olds Extended	Total number of 3- and 4-year old 15 hour places filled	% against 104 places (52 FTE)
Summer 2019	19	79%	81	46	127	122%
Summer 2020	20	83%	78	40	118	113.5%
Summer 2021	21	87.5%	67	26	93	89%
Summer 2022	22	92%	63	29	92	88%

2.5 The COVID-19 pandemic has also had a significant impact to the take up of early years provision at Ashgate Nursery School meaning that the demand for places during the Autumn and Spring terms is a lot lower than the Summer terms.

- 2.6 As more parents now routinely work from home, this has also reduced the number of parents purchasing additional childcare sessions. Income from these sessions helped support running costs and the school's financial position. Loss of this income and lower numbers has created financial difficulties as detailed in section 3 of this document.
- 2.7 In view of these financial difficulties, there is a risk to both Ashgate Nursery School and Central Nursery School. To minimise any potential disruption, and to help ensure the future viability of one of the two nursery schools, the proposal is to keep Central Nursery School open as the larger nursery and for no further children to be admitted to Ashgate Nursery School from September 2023.
- 2.8 In relation to Central Nursery School, the school has 52 full time three- and four-year-old nursery places, offering 104 part time places. In addition, the nursery has 12 full time two-year-old nursery places for families to purchase additional childcare.
- 2.9 Central Nursery School offers early years provision over both 38 weeks (term time) as well as a flexible childcare for working parents from 7:30am until 6:00pm every Monday to Friday for 47.5 weeks of the year.
- 2.10 In line with the national trend, there has been a reduction in birth numbers in Derby over previous years, with City-wide forecasts continuing to show falling primary pupil numbers. As background information, the table below shows primary pupil forecasts for Derby up to 2027/28:

Academic Year	City-wide Primary Pupil Forecasts (Reception to Year 6) - Total
2023/24	22,830
2024/25	22,601
2025/26	22,474
2026/27	22,298
2027/28	22,050

- 2.11 The Council recognises that Central Nursery School has higher levels of children with Special Educational Needs and Disabilities (SEND) and like other schools, they apply for additional SEND funding to support children with SEND from the Schools Early Years Inclusion Fund (EYIF). For those children with significantly complex SEND needs, Central Nursery receives extra funding for each child.
- 2.12 In the 2022 summer term, Central Nursery School supported 5 children with Education, Health and Care Plans (EHCP), a further 5 children under an EHCP assessment, and 15 children needing additional support due to emerging SEND needs.

3.0 Financial Situation

- 3.1 Maintained nursery schools receive additional funding as part of the Early Years National Funding Formula to recognise the increased costs associated with standalone nurseries.
- 3.2 The falling pupil numbers, a reduction in additional childcare income due to COVID-19 which is not returning to pre COVID-19 levels, costs associated with the delivery of early years provision for SEND children, has resulted in a significant now irreversible financial deficit for both Ashgate Nursery School and Central Nursery School.
- 3.3 The Council and the two Nursery Schools have been working closely together to establish a budget recovery plan. However, this has not been possible due to the scale of the deficit which has continued to increase over the years, and is forecast to increase further.
- 3.4 Ashgate Nursery Schools forecast end of year financial overspend (31 March 2023) is expected to be £134,580. Central Nursery Schools forecast end of year financial overspend (31 March 2023) is expected to be £311,835. This is a combined overspend across both nurseries of £446,415.
- 3.5 This overspend position at both nursery schools raises significant concerns about the future viability, resulting in this proposal to consider the future viability of Ashgate Nursery School.

4.0 When will the proposed closure take place?

- 4.1 Subject to this initial consultation, a decision will then be taken on whether Ashgate Nursery School is viable, and then a statutory closure consultation process will start. The closure of Ashgate Nursery School, if approved, will take effect from January 2024.
- 4.2 If the closure is approved, the Council will then consider future options for the Ashgate Nursery site.

5.0 School governance and management

- 5.1 Alongside this consultation, the Council is following its Schools Causing Concern guidance and that process is currently underway with both schools.

6.0 What are the implications for staff?

- 6.1 The Council's Consultation, Restructuring and Redundancy process will be followed if approval is given to close Ashgate Nursery School. As part of this process all school staff and the trade unions will be fully consulted.
- 6.2 Where a redundancy is identified, then there is a legal obligation, as part of a fair process, to ensure that suitable alternative employment is considered.

7.0 What are the implications for children attending the nursery?

- 7.1 Children attending Ashgate Nursery School would be offered a place at Central Nursery School.
- 7.2 Whitecross Nursery School, Becket Primary School, a childminder and five private, voluntary, and independent day nurseries also offer early years provision within the immediate area.
- 7.3 No children will be admitted to Ashgate Nursery school from September 2023.
- 7.4 The Council's Childcare and Families Information Team (CFIT) will provide an individual childcare brokerage service together with early support for families affected by this proposal.

8.0 How can I give the Council my views and comments on the proposal?

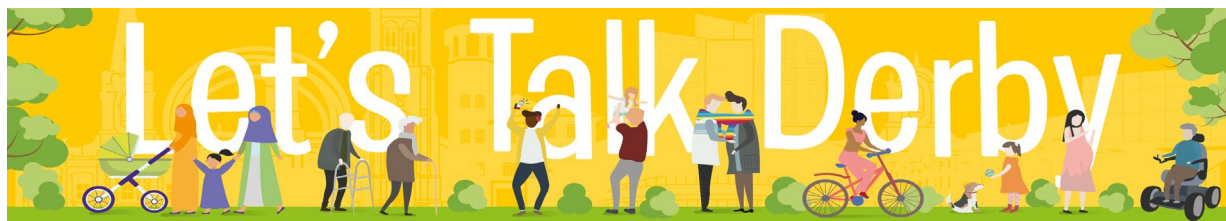
- 8.1 We are very interested in your views and comments on this proposal. Please respond to us, in writing, by using the consultation response form attached to this paper, or by using the online consultation response form which will be located on [Let's Talk Derby](#). There is a seven-week period for people to respond to this consultation. The closing date for responses is **Monday 27 February 2023**.
- 8.2 There will be a consultation meeting for **staff** on Tuesday 17 January at 4.00pm at Ashgate Nursery School.
- 8.3 There will be a consultation meeting for **parents of children attending the nurseries** on Wednesday 18 January at 4.00pm at Ashgate Nursery School.

9.0 What are the next steps?

- 9.1 Please use this consultation as an opportunity to give us your views and comments on our proposal to consider the future viability of Ashgate Nursery School.
- 9.2 After the closing date, we will gather all the responses received and report them to the Council Cabinet (the group of Councillors who make decisions) in March 2023 for them to decide about progressing to the next stage of the consultation process.
- 9.3 If Council Cabinet approves moving to the next stage, a formal public notice will be published in May 2023 followed by a further four-week consultation period. The Council will then carefully consider the responses received and a final decision will be made by Council Cabinet in June 2023.



DERBY CITY COUNCIL



Ashgate Nursery School consultation

Derby City Council is consulting on a proposal to consider the future of and the possible closure of Ashgate Nursery School from January 2024, as a result of falling pupil numbers. Ashgate Nursery School is federated with Central Nursery School and the nurseries operate over two separate sites.

Ashgate Nursery School has seen a falling number of children accessing their 2, 3 and 4 year-old early years provision for a number of years.

Data also shows that COVID-19 has had a significant impact on the take up of early years provision at Ashgate Nursery School throughout the academic year with children accessing places during the Autumn and Spring terms being significantly lower than in the Summer terms.

To minimise disruption to children, parents and families, the proposal is to retain the Central Nursery School because it can accommodate the children currently attending Ashgate Nursery School.

Please take time to read through the document and let us know your views and comments using the survey below. The closing date for responses is **Monday 27 February 2023**. We hope you find the document helpful and informative.

For more information or to request this document in an alternative format please contact on the School Organisation Team by telephone on 01332 640000 email: school.proposals@derby.gov.uk

Data Protection



All information provided will be treated in accordance with the Data Protection Act 2018. We will only use this information to inform the future of Ashgate Nursery School. All of the personal information you provide will remain confidential and will not be shared with any third party. The overall anonymised findings of the survey may be shared with other departments within the council. Please note we are required to publish all anonymised comments on our website.

Please see our attached privacy statement for more information.

Q1. Do you consent to the processing and storing of your response for the purpose of this consultation? *Please select one option*

☐ Yes

☐ No, thank you. Please do not return your survey as we need consent to be able to collect your answers.

Q2. Please tell us how you are responding to this consultation? *Please select one option only*

☐ Parent/Carer

☐ School Governor

☐ A member of staff

☐ Local resident

☐ Other

Q3. Other, please tell us in the box below

--

Q4. Please tell us the extent to which you support the Council's proposals to close Ashgate Nursery School? *Please select one option only*

☐ Fully support

☐ Somewhat support

☐ Neither support nor oppose

☐ Somewhat oppose

☐ Strongly oppose

Q5. To what extent do you support the proposal to relocate nursery pupils/provision to Central Nursery School? *Please select one option only*

- ☐ Fully support
- ☐ Somewhat support
- ☐ Neither support nor oppose
- ☐ Somewhat oppose
- ☐ Strongly oppose

Q6. Do you have any other comments or suggestions to make relating to our proposals for Ashgate Nursery School? *Please tell us in the box below*

If you are completing this as somebody who lives, works or studies in Derby....

The next few questions will help us to make sure that we hear everyone's views, whatever your age, circumstance or background.

Why are we asking these questions?

To make sure that we comply with our legal equality responsibilities and understand what all sections of our community feel about our services and functions.

We are keen to hear from people from equality groups or who have protected characteristics (as referred to in the Equality Act), so that we can make any appropriate changes. You can find out more about this in the guide to public authorities.

We would like people to complete these equality questions, but it is not essential. If you do not wish to answer these questions, please leave them blank and move to the next page.

Please tell us how you describe your gender. *Please select all that apply*

☐ Woman/girl

☐ Man/boy

☐ Non-binary

☐ Prefer not to say

☐ In another way

If you said in another way, please tell us how you describe yourself in the box below

Is the gender you identify with the same as your sex registered at birth?

Please select one option

☐ Yes

☐ No

☐ Prefer not to say

What was your age on your last birthday? *Please tell us your age in years in the box below*

Do you consider yourself to be a disabled person? Please select one option

☐ Yes

☐ No

I consider myself to be... Please select one

☐ heterosexual/straight

☐ a gay woman/lesbian

☐ bisexual

☐ Prefer not to say

☐ a gay man

☐ Other

To which group do you consider you belong? Please select one option

☐ Asian or Asian British – Indian

☐ Dual Heritage - White and Black African

☐ Asian or Asian British – Pakistani

☐ Dual Heritage - White and Asian

☐ Asian or Asian British – Bangladeshi

☐ Any other Dual Heritage background

☐ Asian or Asian British – Chinese

☐ White - English / Welsh / Scottish / Northern Irish / British

☐ Any other Asian background

☐ White – Irish

☐ Black or Black British – African

☐ White - Gypsy or Irish Traveller

☐ Black or Black British – Caribbean

☐ Any other White background

☐ Any other Black background

☐ Other ethnic group – Arab

☐ Dual Heritage - White and Black Caribbean

☐ Any other ethnic group

If you have selected one of the 'Any other background' options, please give further details in the box below.

--

Do you have any religious beliefs? *Please select one*

☐ Yes

☐ No

☐ Prefer not to say

If yes, to which religion do you belong? *Please select one*

☐ Buddhist

☐ Muslim

☐ Christian

☐ Sikh

☐ Hindu

☐ Other

☐ Jewish

☐ Prefer not to say

Thank you for taking the time to complete this questionnaire. Please send us your completed surveys in the pre-paid envelope provided by 27 February 2023.

Or, return to the FREEPOST address below. You do not need to use a stamp.

**Ashgate Nursery School consultation
Derby City Council
FREEPOST
MID24259
Derby
DE1 2BR**

For further information, please contact the School Organisation and Provision team by e-mail at school.proposals@derby.gov.uk or telephone 01332 640000.

Corporate Consultation Privacy Notice

How is your information used?

You will be asked for your consent at the beginning of every paper based questionnaire.

Where we have your consent we may use your information to:

- Inform the decision on which the consultation subject matter is based or the formation of the policy, service or event that the consultation is concerned with;
- Help us understand who takes part in our consultation in terms of gender, age, ethnicity and other demographic factors and how views differ across respondents;
- Send you communications which you have requested and that may be of interest.

Who has access to your information?

We may share your information with the following third parties for the reasons detailed;

- A research company that we have commissioned to undertake consultation on our behalf. If this is the case it will be clear on all consultation materials that an external agency is conducting the consultation on our behalf and they too will be bound by GDPR.
- Internally with Council departments for the purpose of:
- Giving feedback gathered in the consultation to the services to inform their work
- At the consultees request where they have asked that we pass on their details to the relevant department to address a particular issue or concern
- Where a safeguarding concern has been raised in a consultation response
- Statutory agencies, such as the Police or National Fraud Authority - we may share your information with statutory agencies in line with our legal obligations and/or in completion of our public tasks.

We will not sell or rent your information to third parties. We will not share your information with third parties for marketing purposes.

For further information about how your personal information will be used, please visit www.derby.gov.uk where you can see a full copy of our Privacy Notice.

Alternatively you can request a hard copy from - The Consultation Team, The Council House, Corporation Street, Derby, DE1 2FS. Telephone: 01332 640745, email: letstalkderby@derby.gov.uk

We can give you this information in any other way, style or language that will help you access it. Please contact us on **01332 640000** or **derby.gov.uk/signing-service/**

Punjabi

ਇਹ ਜਾਣਕਾਰੀ ਅਸੀਂ ਤੁਹਾਨੂੰ ਕਿਸੇ ਵੀ ਹੋਰ ਤਰੀਕੇ ਨਾਲ, ਕਿਸੇ ਵੀ ਹੋਰ ਰੂਪ ਜਾਂ ਬੋਲੀ ਵਿੱਚ ਦੇ ਸਕਦੇ ਹਾਂ, ਜਿਹੜੀ ਇਸ ਤੱਕ ਪਹੁੰਚ ਕਰਨ ਵਿੱਚ ਤੁਹਾਡੀ ਸਹਾਇਤਾ ਕਰ ਸਕਦੀ ਹੋਵੇ। ਕਿਰਪਾ ਕਰਕੇ ਸਾਡੇ ਨਾਲ ਇੱਥੇ ਸੰਪਰਕ ਕਰੋ: **01332 640000** ਜਾਂ **derby.gov.uk/signing-service/**

Polish

Aby ułatwić Państwu dostęp do tych informacji, możemy je Państwu przekazać w innym formacie, stylu lub języku. Prosimy o kontakt: **01332 640000** lub **derby.gov.uk/signing-service/**

Slovak

Túto informáciu vám môžeme poskytnúť iným spôsobom, štýlom alebo v inom jazyku, ktorý vám pomôže k jej sprístupneniu. Prosím, kontaktujte nás na tel. č.: **01332 640000** alebo na stránke **derby.gov.uk/signing-service/**

Urdu

یہ معلومات ہم آپ کو کسی دیگر ایسے طریقے، انداز اور زبان میں مہیا کر سکتے ہیں جو اس تک رسائی میں آپ کی مدد کرے۔ براہ کرم **01332 640000** یا **derby.gov.uk/signing-service/** پر ہم سے رابطہ کریں