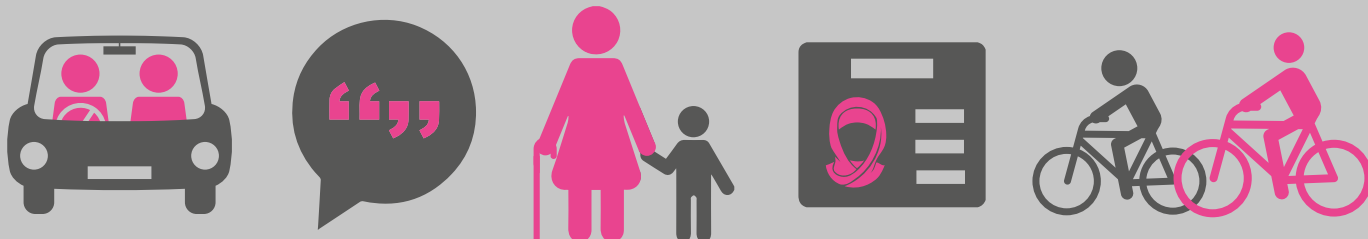


Post 16-19 Home to School Travel Assistance Policy Consultation



Have your say at
letstalkderby.gov.uk

You will find a survey for parents/carers and stakeholders
and an easy read version for young people.



Derby City Council

Introduction

Over the next 11 weeks Derby City Council will be consulting on a proposal which may change the way we currently provide discretionary home to school or college travel assistance for eligible sixth form students. Sixth formers are those defined as all 16-19 year old learners including 19-25 year old learners with an Education Health and Care Plan (EHCP) who started the course before their 19th birthday (sixth form learners).

We are not proposing any changes to the Home to School Transport Policy for children and young people who are aged 0-5, 5 -16 and adult learners.

This consultation document tells you about the proposal, the reasons for it, and how the decision-making process works. We hope you find the document helpful and informative.

No decisions about this proposal have been made. We are committed to a wide consultation on this proposal before the Council makes any decision.

Your feedback is very important to us and will be used to inform decisions about the proposal. Please take time to read through this consultation document and let us know your views and comments by Monday 12 December 2022.

Local authorities have a duty to prepare and publish an annual transport policy statement specifying the arrangements for the provision of transport, or otherwise that the authority considers necessary, to facilitate the attendance of sixth form learners at their educational setting.

Our Post 16 transport policy statement 2022-23 provides a full detailed statement of the Council's home to school travel duties including, to promote greater independence, improve travel infrastructures and local travel assistance for all sixth form learners living in Derby and attending, school, college or work placements.

Sixth form learners may also be entitled to additional or alternative funding to support travel assistance, for example, through the Government's **National 16-19 Bursary Fund**

Why change?

Derby City Council is currently experiencing significant financial challenges, our Medium Term Financial Plan from 2022/23 to 2024/25 included £28.437m of new additional costs which means that the Council needs to make £16.767m of savings over the next three years. This means making difficult decisions about services in all areas of the Council's work.

Our current travel assistance offer for eligible sixth form learners, mainly consists of providing single occupancy, or shared taxis. It is believed that this could be a barrier for some young people who may otherwise be able to access a wide range of opportunities available to support them on their journey into adulthood, employment and beyond.

For some young people and their families, the personal gains of being able to access a high-quality independent travel training service can be enormous.

The importance of sustainable travel, such as walking and cycling to and from schools, colleges and university campus in and around the city are always encouraged as a first option. Where this is not a practical option, learners are encouraged to use public transport services.

Derby is well served by an extensive public transport network with frequent bus services which operate to, or nearby all sixth form schools, further and higher educational settings, with regular train and bus services to other schools, colleges, and universities outside of Derby.

The Council currently arranges taxis and minibuses for 181 eligible sixth form learners at a cost of £1.3m.

Whilst the Council remains totally committed to providing discretionary travel assistance for eligible sixth form learners, at the same time we recognise there is an opportunity for this to be offered in a different way to help support young people achieve their full potential whilst managing increasing demand and costs.

Over recent years there has been a 27% increase in the number of pupils eligible for travel assistance. The Council's overall home to school travel assistance expenditure for 2021-22 financial year was £5.5m and is forecast to increase by another £2.5m to £8.0m by the end of March 2023 because of rapidly rising demand in eligible travel assistance applications, together with increasing costs from transport operators.

The overall numbers of children and young people aged 0-25 eligible for home to school travel assistance is also forecast to increase by at least 16% over the next two years. This means that home to school travel assistance costs could also continue to increase by a further £1.0m by the end of March 2024.

As well as considering changes to how we provide travel assistance for sixth form learners, the Council is also trying hard to reduce rising costs by undertaking targeted and focussed work. For example, implementing a much more efficient route planning IT system and working in close partnership with taxi operators and other partners to identify more contract efficiencies and commercial opportunities to achieve greater value for money services.

The proposal we are considering

Instead of the Council arranging taxis and minibuses or paying fuel reimbursements, the Council propose to replace them with Personal Travel Budget payments for all eligible sixth form learners. The proposal will be supported by a new and enriched Independent Travel Training (ITT) service to help and support more young people become independent travellers.

What is a Personal Travel Budget?

A personal travel budget is a fixed amount of money paid by the Council directly to families to support eligible children and young people to travel to and from school or college.

How will a Personal Travel Budget work?

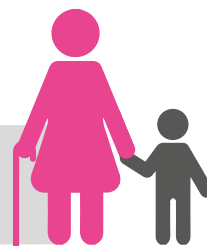
- The fixed personal travel budget payment will be split into three termly payments. At the start of each term, we will pay the amount into your chosen bank account.
- Each year we will review the travel plan with you and the school or college to make sure it is the most appropriate arrangement.
- We expect that personal travel budget payments will only be spent in a way that ensures your child can get to school or college.

Ways you could use a Personal Travel Budget



Drive your child to school or car share with other parents

Pay for childcare for a younger child, so you can take your child to school



Work with the school to join with other parents

Pay for a bus pass for your child OR
Get a bus pass for a friend to go with your child



Arrange for a friend or relative to cycle or walk with your child

Some benefits of a Personal Travel Budget

- **Allows the freedom to make your own arrangements to suit your family**
- **Gives you control over how the money is spent**
- **Share the costs and save money by joining up with other parents**
- **Use the money to help you or your child become more independent**

It is proposed that personal travel budget payments will be based on the distance from the home address to the school or college measured by the same software used by the Council when assessing all home to school travel assistance applications. The table below gives an indication of Personal Travel Budget payments that could be offered for the academic year:

Single journey miles travelled	Yearly Personal Travel Budget Payment	
	Attending 5 days	Attending less than 5 days
0 – 1.99	£1,060	£860
2 – 4.99	£1,590	£1272
5 – 10.99	£3,180	£2,544
11 – 15.99	£4,240	£3,392
16+	£5,300	£4,240

We fully recognise and understand that there may be some exceptional cases where a personal travel budget, or independent travel training would not be appropriate, for example, young people who have significant medical needs where they must travel with specialist professional support or medical equipment.

What is Independent Travel Training?

Independent travel training is a free tailored and practical service that offers children and young people a set of essential skills enabling them to travel independently, by public transport, on foot or by bike. It aims to help children and young people travel independently and without fear so they can get to school or college, work and for social and leisure activities.

The Council's new and enriched independent travel training service will be led by Transition 2 (T2). T2 are experts in supporting young people with SEND.

The new independent travel training service will be a great way for learners to gain essential 'hands-on' organisational and independence skills within their circles of support and will be fully embedded with opportunities for learners to develop their functional skills in ways that make literacy, numeracy and ICT meaningful and useful.

Outcomes from personalised travel training reach far beyond the bus journey, into lifelong learning opportunities which include taking care of personal belongings, the ability and confidence to make informed choices. Such life skills are not only of significance to learners' personal feelings of satisfaction, but they are also transferable into adulthood, the workplace and allows even greater social connections.

Co-producing the proposal

We are absolutely committed to co-production with parents, carers, young people and have worked together with the Derby Local Area SEND Co-Production and Delivery Group to explore and develop this consultation proposal. Below is a summary of the feedback from several co-production meetings:

- It's recognised that whilst there may be those who will continue to require a taxi, for some young people there is an opportunity to broaden their skills, reduce their fears and equip them to 'live their best lives'.
- Young people are really interested in green travel, sustainability and eco issues.
- Technology now allows for Apps so parents can track young people and give the young people up to date information on transport options.
- There is real pride from our young people when they can travel independently. For those that can, independent travel training can be extremely beneficial and rewarding.
- Families would welcome flexibility - families may have multiple taxis turning up to collect multiple children at the same time, allowing families flexibility to arrange what works best for them would be welcomed.
- Whether the scope for personal travel budgets would be able to cover multiple children in the same locality. That way parents might choose to pool budgets for shared transport.
- There needs to be assistance to those children with anxiety. Careful consideration is needed at an individual level as it isn't always clear the best way to help them.
- Independent travel training can give the skills needed for life; a wider and more flexible offer would be needed to consider those where such training wasn't an option.
- Staying safe is an important element of this training, actions such as ensuring phones are charged and looking after bags and belongings are essential.

Who would be impacted by this proposal and how?

If the proposal is agreed, from September 2023 all sixth form learners eligible for home to school travel assistance would be offered a personal travel budget payment to enable them to arrange their own transport instead of the Council organising transport for them.

Transport provided by taxi or minibus would only be considered in exceptional circumstances. For example, young people who have significant medical needs where they must travel with specialist professional support or medical equipment.

A wide-ranging Equalities Impact Assessment will also be carried out with young people and their families, partner organisations and stakeholders throughout the consultation so that we can understand how our proposals may affect them.

How the consultation will work

The consultation runs from the 30 September 2022 and ends at midnight on the 12 December 2022. During the consultation, we will be holding a series of consultation events to provide you with information to help you submit your views on the proposals.

The dates and venues for the consultation events are:

- **Wednesday 19 October 2022, from 10am to 11:30am – The Council House**
- **Wednesday 19 October 2022, from 12:30pm to 2pm – The Council House**
- **Thursday 20 October 2022, 6:30pm to 8pm – The Council House**

Any additional public events will be published on www.letstalkderby

We have also planned some participation and engagement meetings at 10 schools and colleges and with voluntary sector providers and groups specifically for young people who may be directly affected by the proposals. We really want to listen and hear about their experiences of travel to school and college, their aspirations for independence and integration and what they think will help support them to arrive safely, on time and ready to learn.

If you would like to discuss any specific aspects of the proposal or need more information, please email: letstalkderby@derby.gov.uk

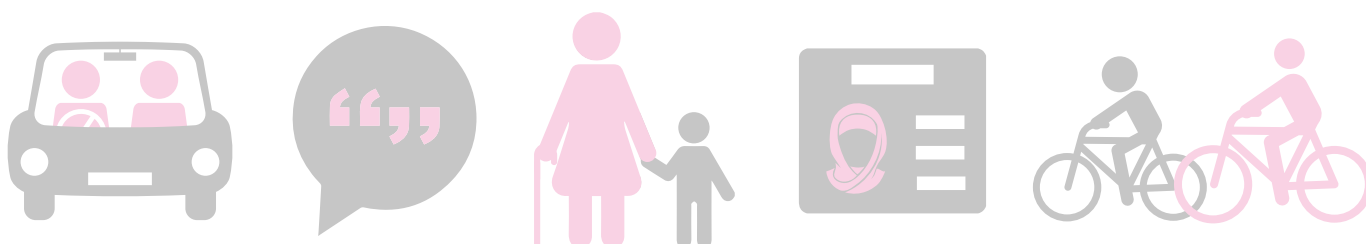
What happens next?

All consultation responses will be very carefully considered. A detailed report and a summary of the consultation responses will be presented to the Local Area SEND Co-Production & Delivery Group in January 2023 and Council Cabinet (the group of Councillors who make the decisions on proposals) on 15 February 2023.

A consultation feedback report will be available for anyone who completed the questionnaire or are interested in the outcome after Council Cabinet makes its decision.

If the proposal is agreed a new Post 16 -19 Transport Policy statement, would be published by the Council in May 2023, with possible changes taking effect from September 2023.

Consultation Timeline	Date
Consultation period starts	30 September 2022
Consultation period ends	12 December 2022
Undertake Equalities Impact Assessment on the effect of the proposed changes	30 September to 31 January 2023
Consultation response shared with Derby Local Area SEND Co-Production & Deliver Group	11 January 2023
Outcome of consultation is reported to Council Cabinet for consideration and decision	15 February 2023
Council Cabinet decision	2 March 2023



You can have your say at www.letstalkderby.gov.uk where there is a survey for parents/carers and stakeholders and an easy read version for young people.

We can give you this information in any other way, style or language that will help you access it. Please contact us on **01332 640825** or **derby.gov.uk/signing-service**

Punjabi

ਇਹ ਜਾਣਕਾਰੀ ਅਸੀਂ ਤੁਹਾਨੂੰ ਕਿਸੇ ਵੀ ਹੋਰ ਤਰੀਕੇ ਨਾਲ, ਕਿਸੇ ਵੀ ਹੋਰ ਰੂਪ ਜਾਂ ਬੋਲੀ ਵਿੱਚ ਦੇ ਸਕਦੇ ਹਾਂ, ਜਿਹੜੀ ਇਸ ਤੱਕ ਪਹੁੰਚ ਕਰਨ ਵਿੱਚ ਤੁਹਾਡੀ ਸਹਾਇਤਾ ਕਰ ਸਕਦੀ ਹੋਵੇ। ਕਿਰਪਾ ਕਰਕੇ ਸਾਡੇ ਨਾਲ ਇੱਥੇ ਸੰਪਰਕ ਕਰੋ: **01332 640825** ਜਾਂ **derby.gov.uk/signing-service**

Polish

Aby ułatwić Państwu dostęp do tych informacji, możemy je Państwu przekazać w innym formacie, stylu lub języku. Prosimy o kontakt: **01332 640825** lub **derby.gov.uk/signing-service**

Slovak

Túto informáciu vám môžeme poskytnúť iným spôsobom, štýlom alebo v inom jazyku, ktorý vám pomôže k jej sprístupneniu. Prosím, kontaktujte nás na tel. č.: **01332 640825** alebo na stránke **derby.gov.uk/signing-service**

Urdu

یہ معلومات ہم آپ کو کسی دیگر ایسے طریقے، انداز اور زبان میں مہیا کر سکتے ہیں جو اس تک رسائی میں آپ کی مدد کرے۔ براہ کرم **01332 640825** یا **derby.gov.uk/signing-service** پر ہم سے رابطہ کریں

Derby City Council The Council House Corporation Street Derby DE1 2FS
www.derby.gov.uk



Derby City Council